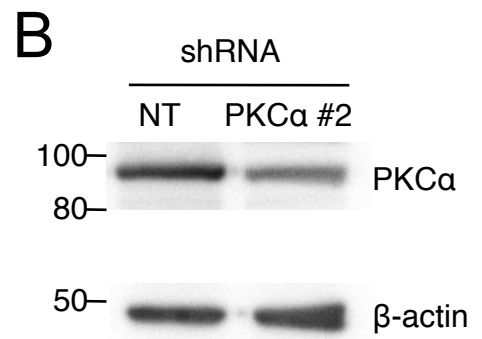
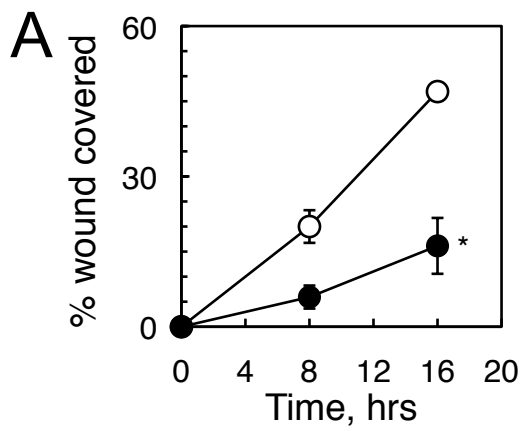


Supplemental Figure Legends

Supplemental Figure 1. A second shRNA construct targeting PKC α also inhibits wound healing. A. NT (open circles) or PKC α shRNA #2-expressing (filled circles) cell lines derived from H1703 NSCLC cells were subjected to a wound healing assay as described for Figure 3. Results reflect the means \pm SEM of three experiments. B. Western blot showing PKC α knockdown efficiency for a representative experiment as in (A). *, significantly different from NT shRNA-expressing cells, $p < 0.05$.

Supplemental Figure 2. A second siRNA targeting DLG1 also inhibits wound healing. A. H1703 cells transfected with a negative control siRNA (ctrl siRNA, open circles) or siRNA targeting DLG1 (DLG1 #2 siRNA, filled circles) were re-plated and subjected to a wound healing assay as described for Figure 3. Results were normalized to the values for the control cells and reflect the means \pm SEM of 8 experiments. B. Western blot showing DLG1 knockdown efficiency for a representative experiment as in (A). ***, significantly different from control cells, $p < 0.001$.

Supplemental Figure 1



Supplemental Figure 2

