

Supplementary data #1

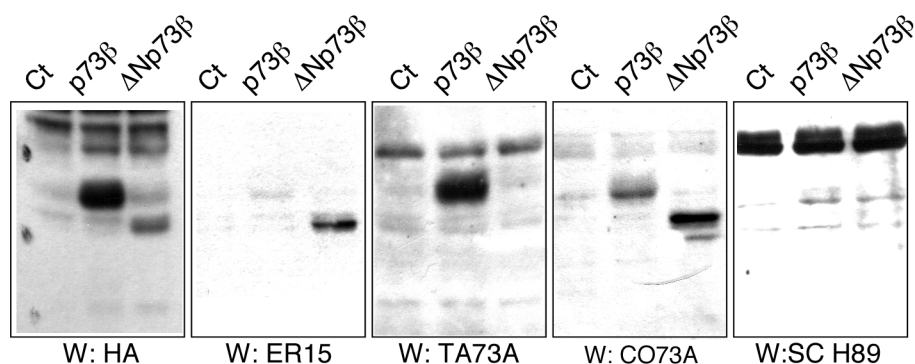
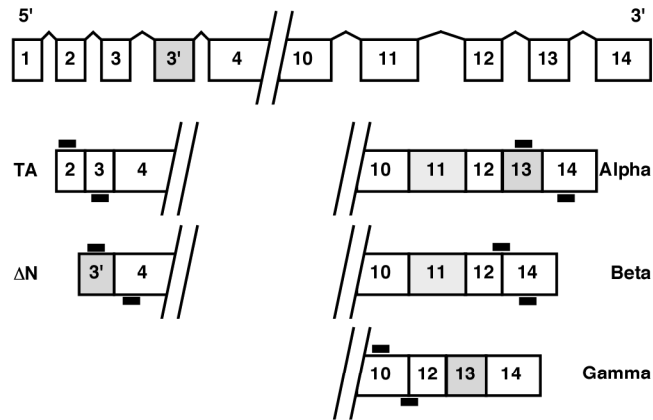


Figure shows a comparison of the reactivity of the two p73 antibodies (CO73A and TA73A) we produced compared to other p73-directed antibodies, the ER15 (1/200; Oncogene) and the H89 (1/100; Santacruz) antibodies. We noted that the ER15 and the CO73A antibodies had surprisingly a stronger reactivity toward the Δ Np73 isoform than the TA isoform. The TA73A detected the TAp73 isoform with a much stronger reactivity than the ER15 or the CO73A antibodies. 293 cells were transfected with a control (Ct), TAp73 β or Δ Np73 β expression vector. Twenty four hours after transfection, cells were lysed and proteins were separated on a 10% SDS-PAGE gel. HA-tagged p73 proteins were detected by the HA (1/1000), ER15 (1/200, Oncogene), TA73A (1/200), CA73A (1/200) or H89 (Santacruz, 1/100) antibodies.

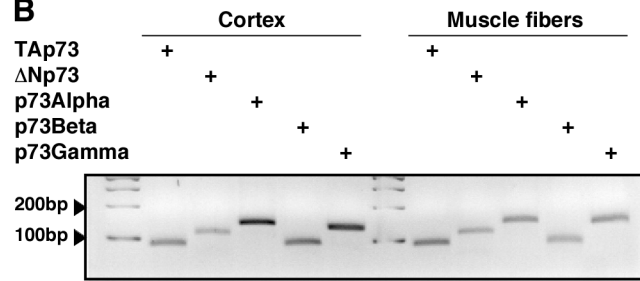
Supplementary data #2

A

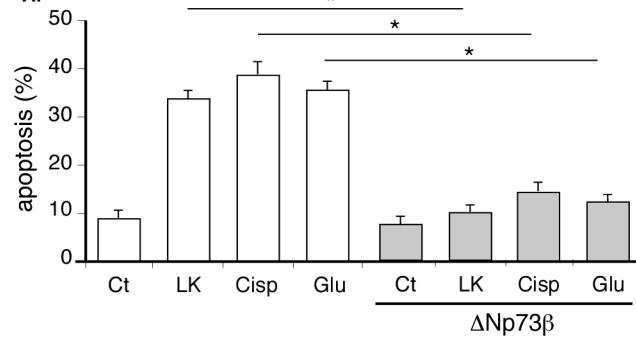
Tp73 gene



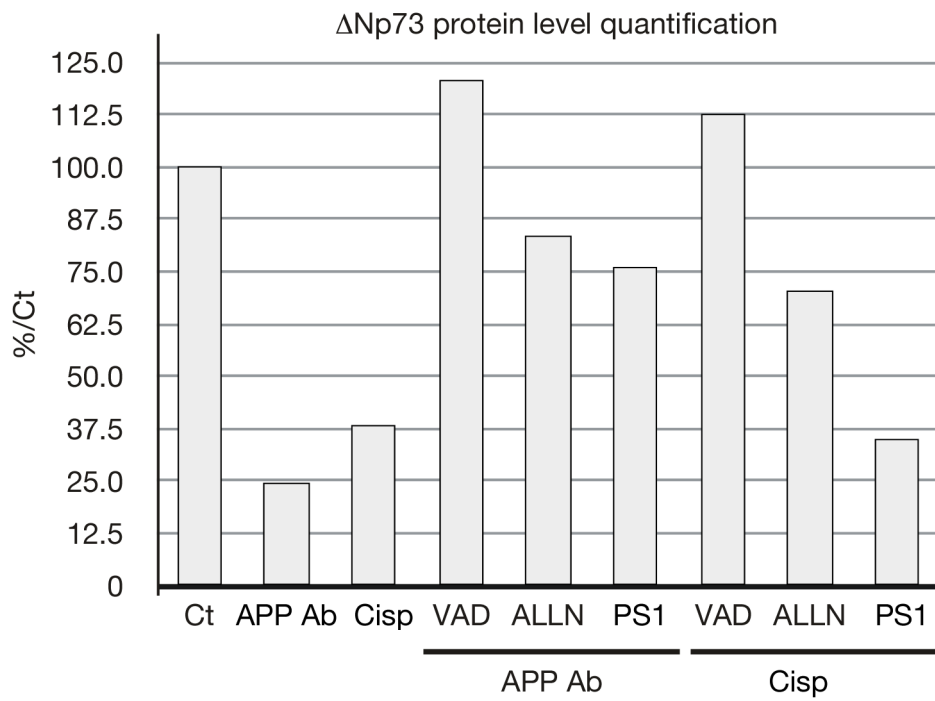
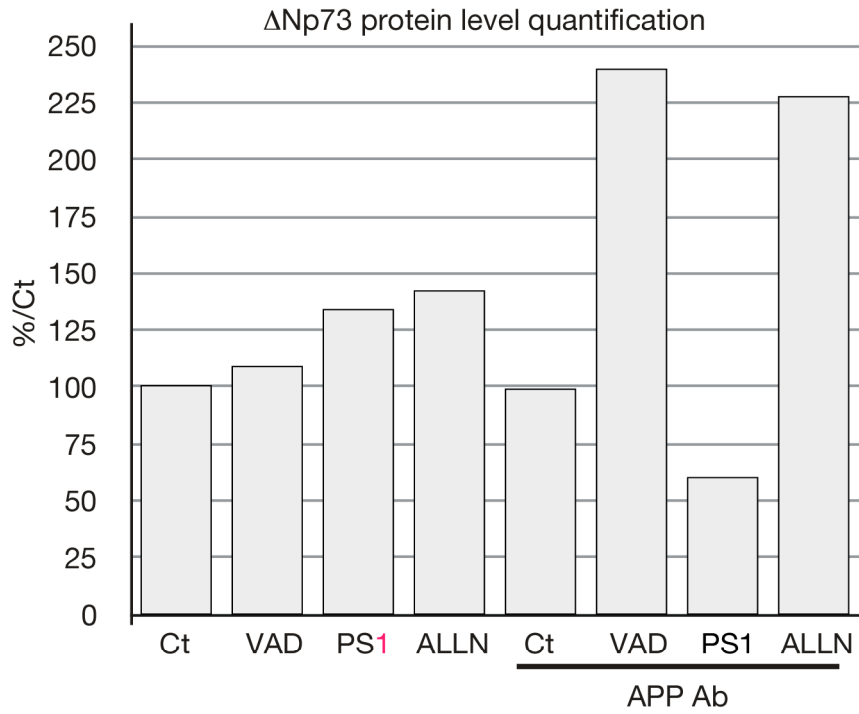
B



A.

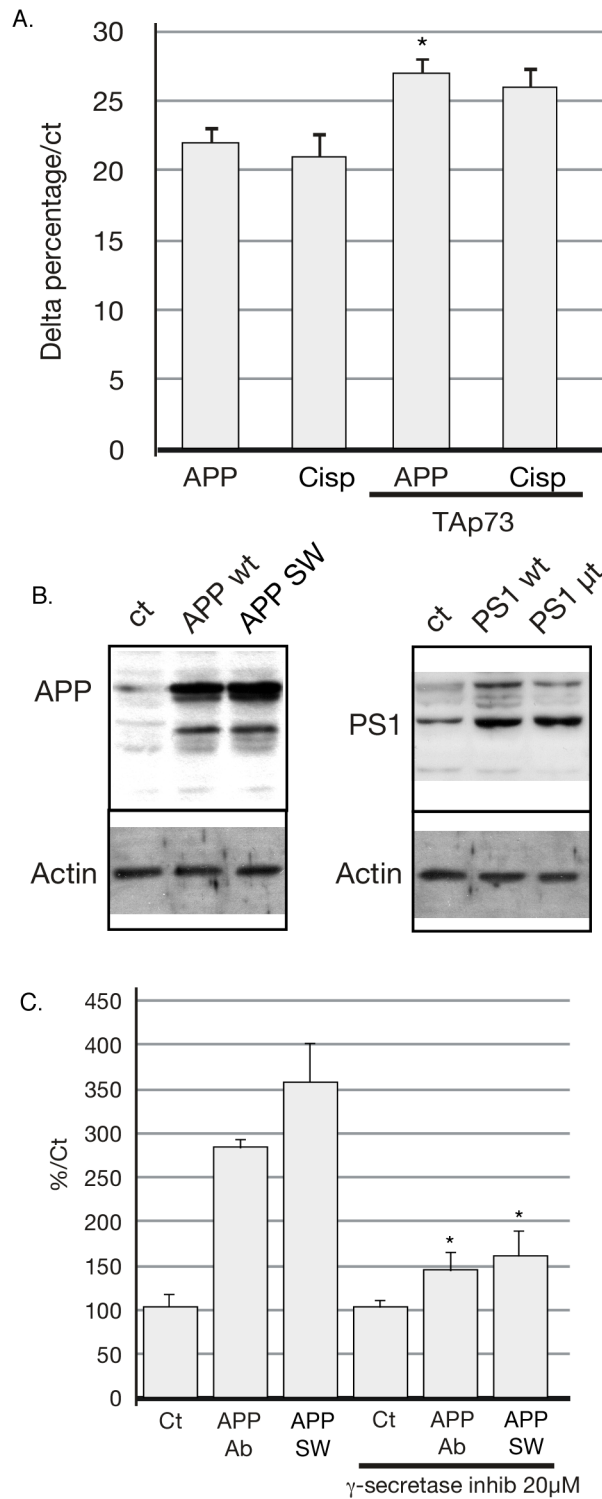


Supplementary data #3



A, B. Quantification of panel A and B of figure 6 using ImageJ software (1.44). In A, results are represented compared to the ct or the ct in presence of APP Ab.

Supplementary data #4



A. Graph represent the delta of percentage relative to the respective control (in absence or in presence of TAp73) of apoptotic cells presented in figure 3.

B. Expression of APP and PS1 in N2A neuroblastomas cells transfected with APP or PS1 expression vectors. Cells were transfected for 36 hours prior lysis and preparation of protein extracts. Proteins were then separated on SDS-PAGE. After transfer to nitrocellulose, proteins were probed with an anti-APP (Santa Cruz) or an anti-PS1 antibody. Actin was used as loading control.

C. Cortical neurons were transfected with the p73-Luc reporter construct along with different expression vectors (empty: Ct; encoding mutated APP as in Alzheimer patients (APPSW)) or treated with the APP-directed antibody (5 μg/ml). As indicated cells were also treated with a γ-secretase inhibitor (20 μM, Sigma, MA). Graphs represent means (relative light unit) with standard deviation of 3 wells from one experiment out of three independent experiments. * indicates statistically significant differences to the corresponding condition in absence of inhibitor (Anova, Neuman-Keuls Multiple comparison test, P<0.05).