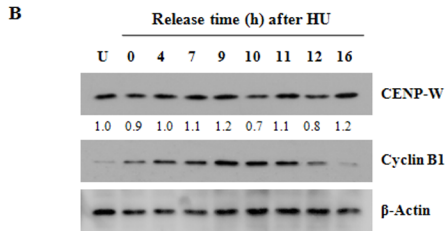
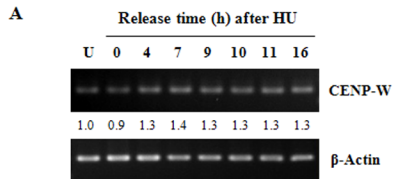
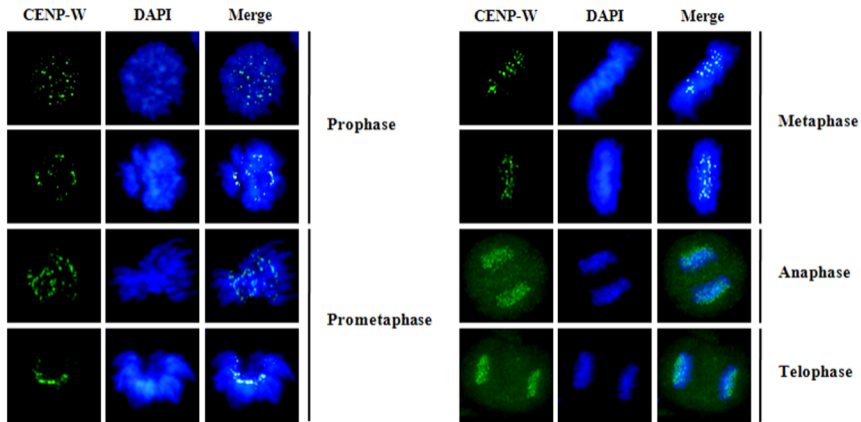


Supplementary Fig.1



Supplementary Fig. 1. CENP-W level in the various stages of cell cycle. (A) After treatment with 1 mM hydroxyurea (HU) for 16 h, the synchronized HeLa cells were harvested at indicated time points after release. CENP-W mRNA level was examined by RT-PCR method using AccuPower RT-PCR system (Bioneer) with a specific primer set (forward: 5'-GAAGCCTCAACTTCGTCTGGAGA-3', reverse: 5'-GCTGCGGCCAGTACATGCT-3'). (B) Western analysis was performed to detect CENP-W in different stages of cell cycle using synchronized HeLa-CENP-W cells using HU treatment. Cyclin B1 level was also visualized to check the synchronization and to monitor the mitotic phase (approximately 10 h after release).

Supplementary Fig.2



Supplementary Fig. 2. Localization of CENP-W during mitosis. At around 10 h after release from HU treatment as cells peak into mitosis, CENP-W was monitored using anti-FLAG antibody in HeLa-CENP-W cells. DNA was also visualized by DAPI staining.