

Supplementary Figures

Figure S1 Overexpression of BRMS1 in MMRU melanoma cells. MMRU cells were transiently transfected with BRMS1 plasmid and BRMS1 expression levels were examined by semi-quantitative RT-PCR.

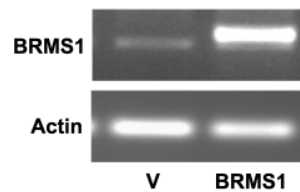


Figure S2 Addition of IL-6 to conditioned medium rescued the tube formation inhibited by BRMS1 overexpression in SK-mel-110 cells. **(a)** Representative microscopic images for the tube formation. **(b)** The numbers of tubes formed per field were counted at 5 random fields for BRMS1-overexpressing and control groups. $**P < 0.01$, Student's *t*-test.

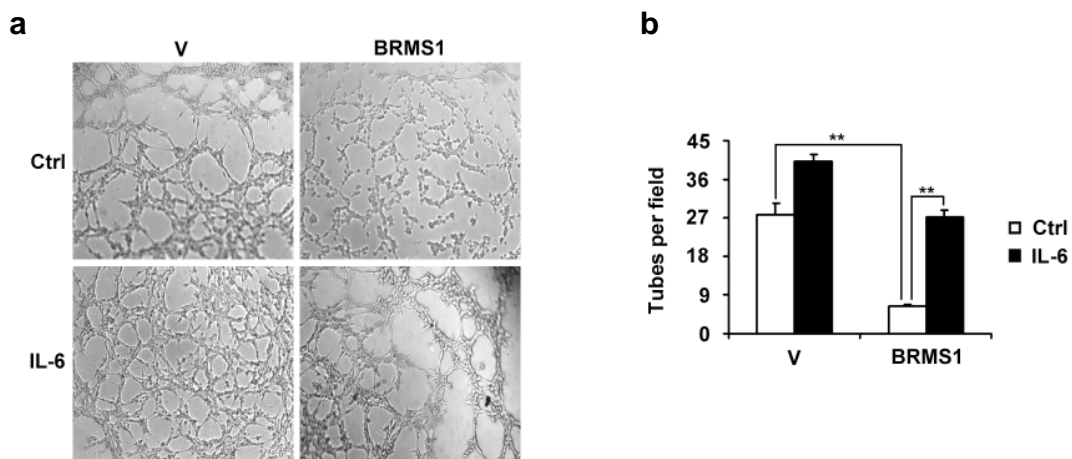


Figure S3 BRMS1-mediated IL-6 expression in SK-mel-110 cells was dependent on p65 and p50 subunits of NF- κ B. SK-mel-110 cells were transiently transfected with p50 or p65 siRNA for 24 hours, then transfected with vector control, Flag-BRMS1 for 48 hours. Total RNA was extracted and subjected to qRT-PCR. (a) p50 mRNA level. (b) p65 mRNA level. (c) IL-6 mRNA level. Data were presented as means \pm s.d. from three independent experiments. * P <0.05, ** P <0.01; Student's t -test.

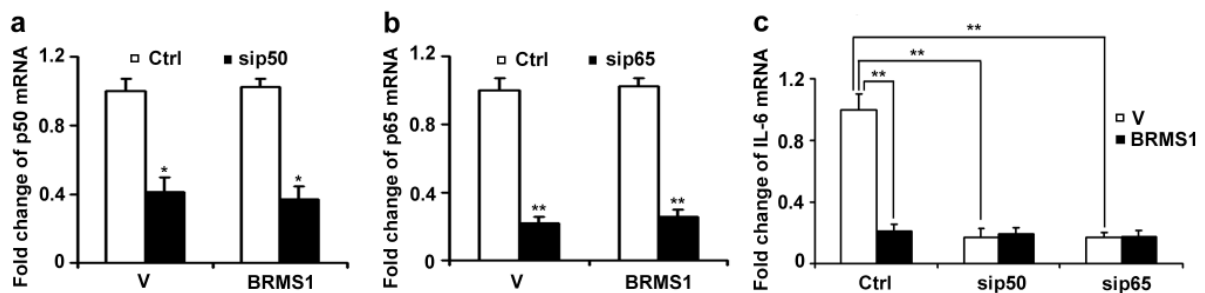


Figure S4 BRMS1 expression was decreased in melanoma cell lines. BRMS1 mRNA levels in nine melanoma cell lines were compared with normal human epithelial melanocytes (MC) by real-time RT-PCR (n=3 for each cell line, Student's t -test). * P <0.05, ** P <0.01.

