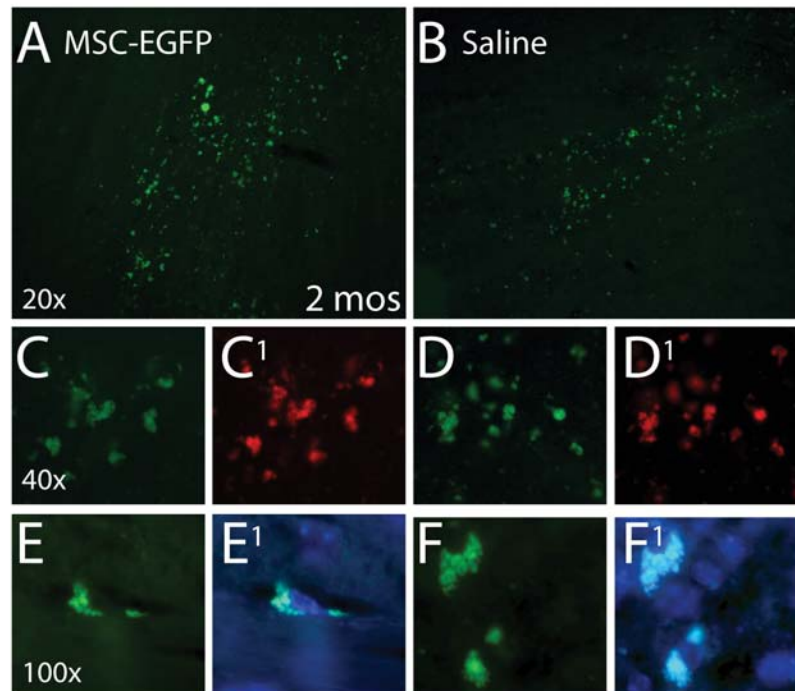


6°øø°æ ~1-°E# °-~E° #

#

Supplemental Figure 1. Chartoff et al.



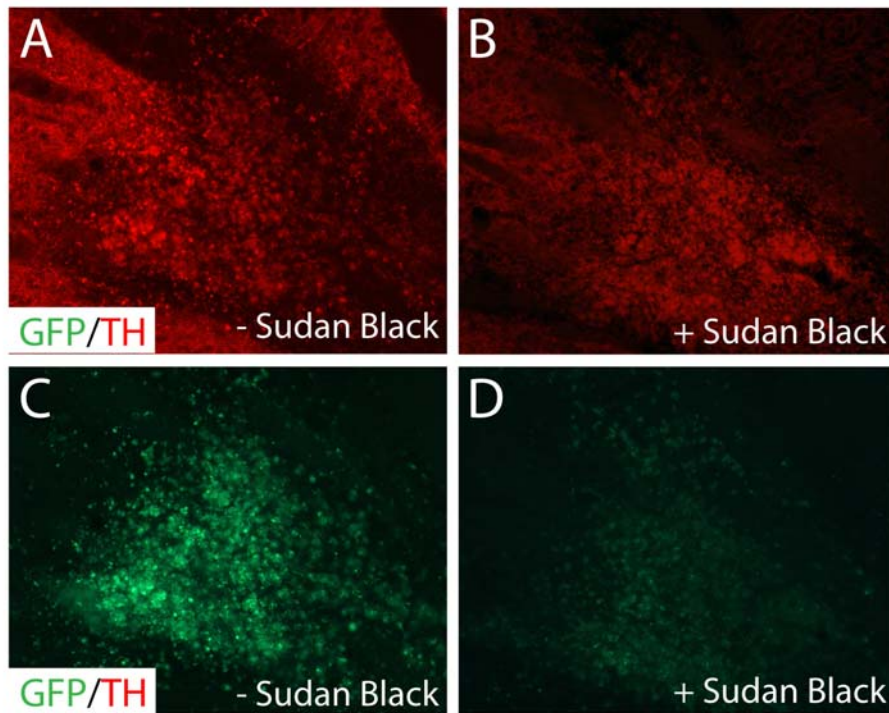
Diffuse fluorescence is observed at the termination of the lesion injector needle and along the injector needle track at 2 months after intranasal delivery of MSC-EGFPs (A,C,E) or saline (B,D,F). Identical numbers and intensity of fluorescence is observed on the GFP and Texas Red bandpass filters (C1 and D1). At 100x magnification (E, E1, F, and F1), green fluorescence is associated with DAPI-stained nuclei.

#

#

#

Supplemental Figure 2. Chartoff et al.



Sudan Black quenches autofluorescence and tyrosine hydroxylase (TH)-specific fluorescence in the striatum of striatally lesioned mice administered MSC-EGFPs intranasally. Tissue sections were incubated with or without Sudan Black (0.3%) immediately prior to double label immunohistochemistry for GFP and TH. **A)** Using the Texas Red filter, TH-positive fibers can be detected in the striatum surrounding the bright, punctate autofluorescence. **B)** Sudan Black pretreatment decreases the overall fluorescent signal, reducing the ability to detect TH-positive fibers. **C)** Using the GFP filter, autofluorescence is visible, but no TH staining can be seen. **D)** Sudan Black pretreatment decreases the overall fluorescent signal, and no GFP-specific signal is detected. #