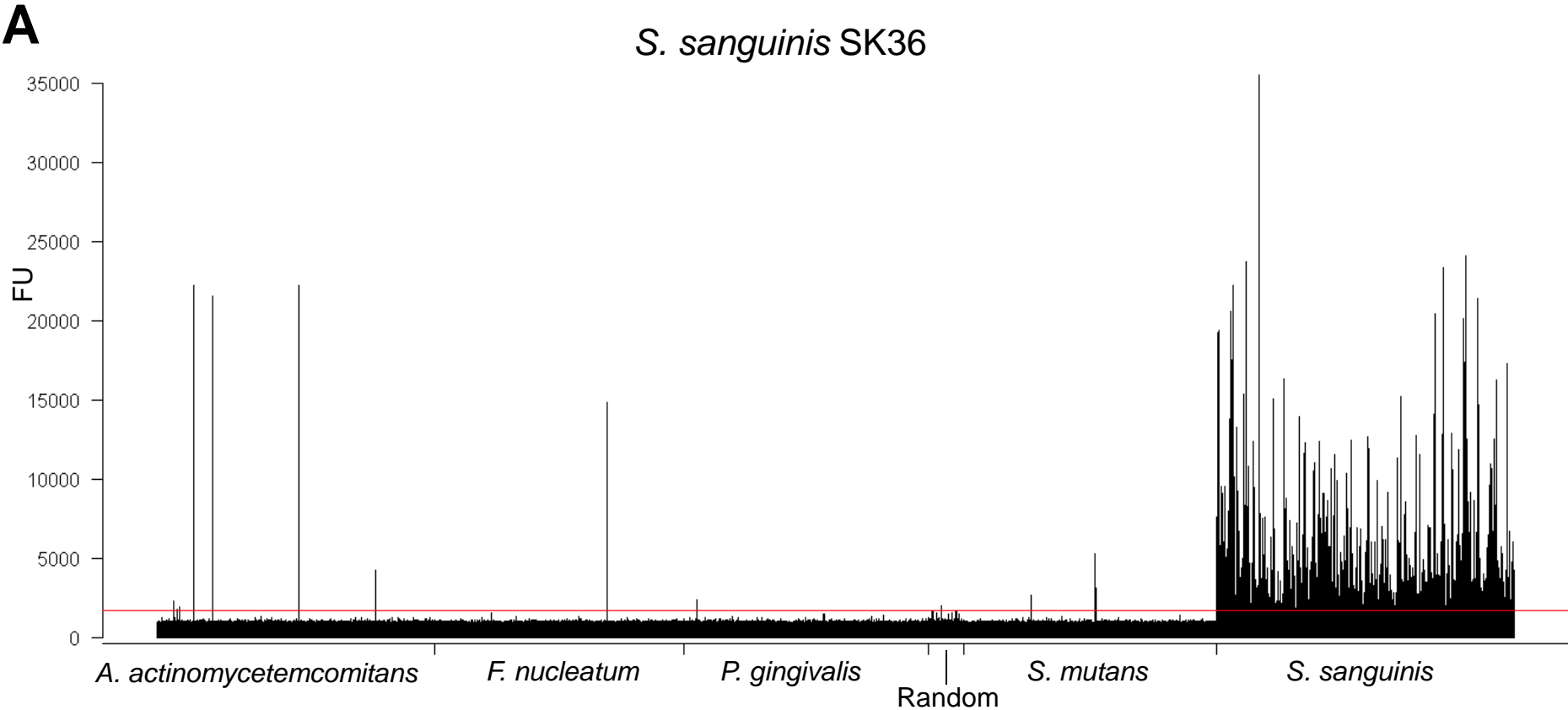
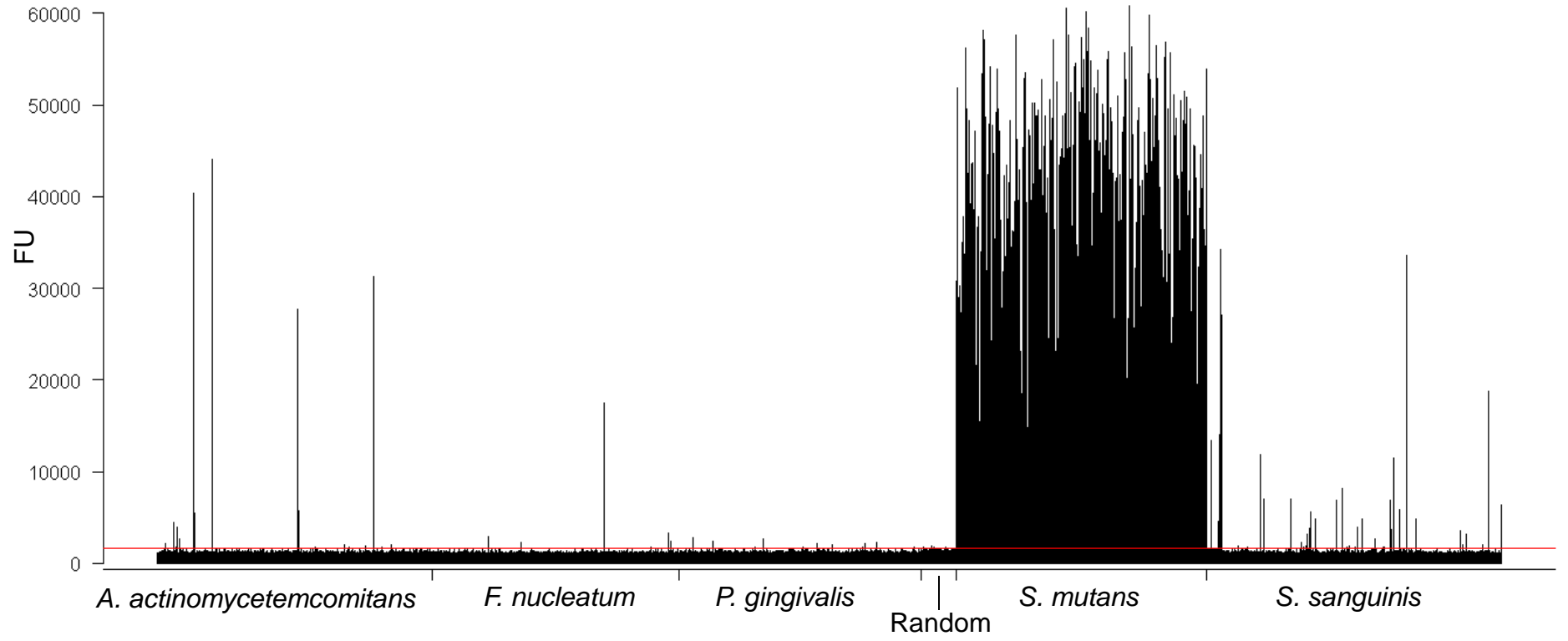


Figure S2



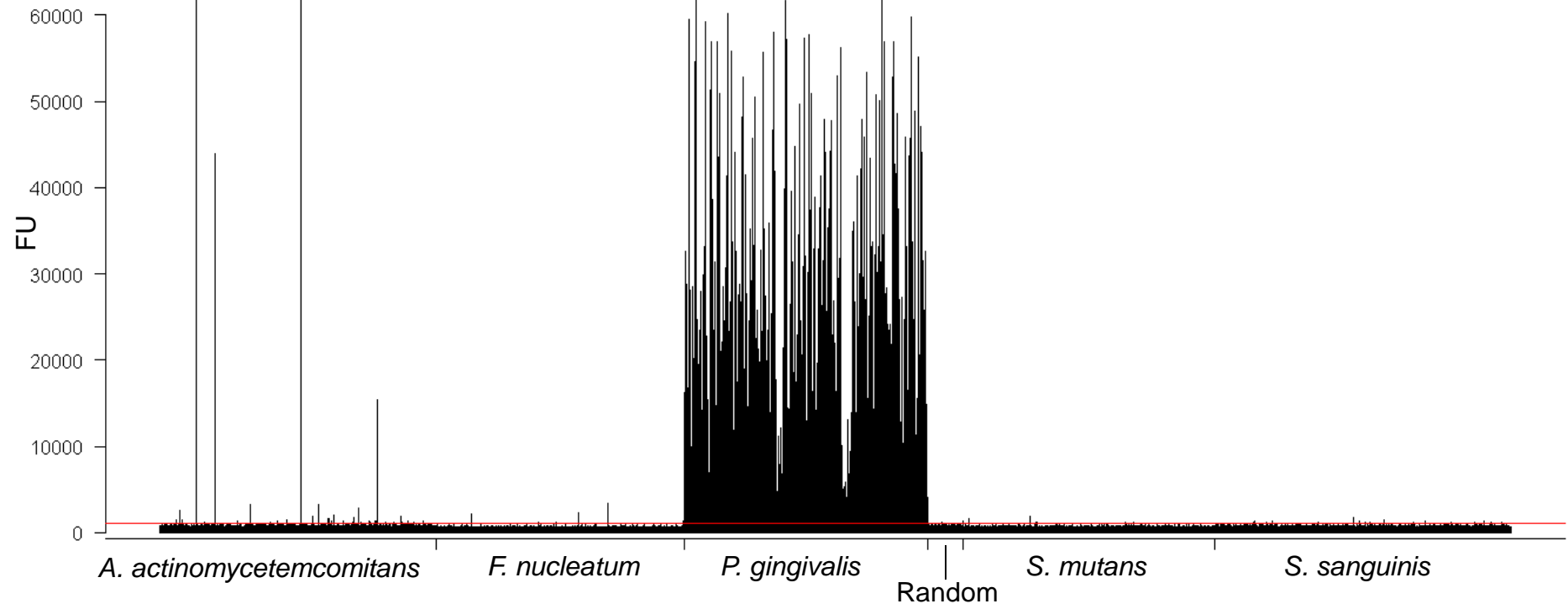
B

S. mutans UA 159



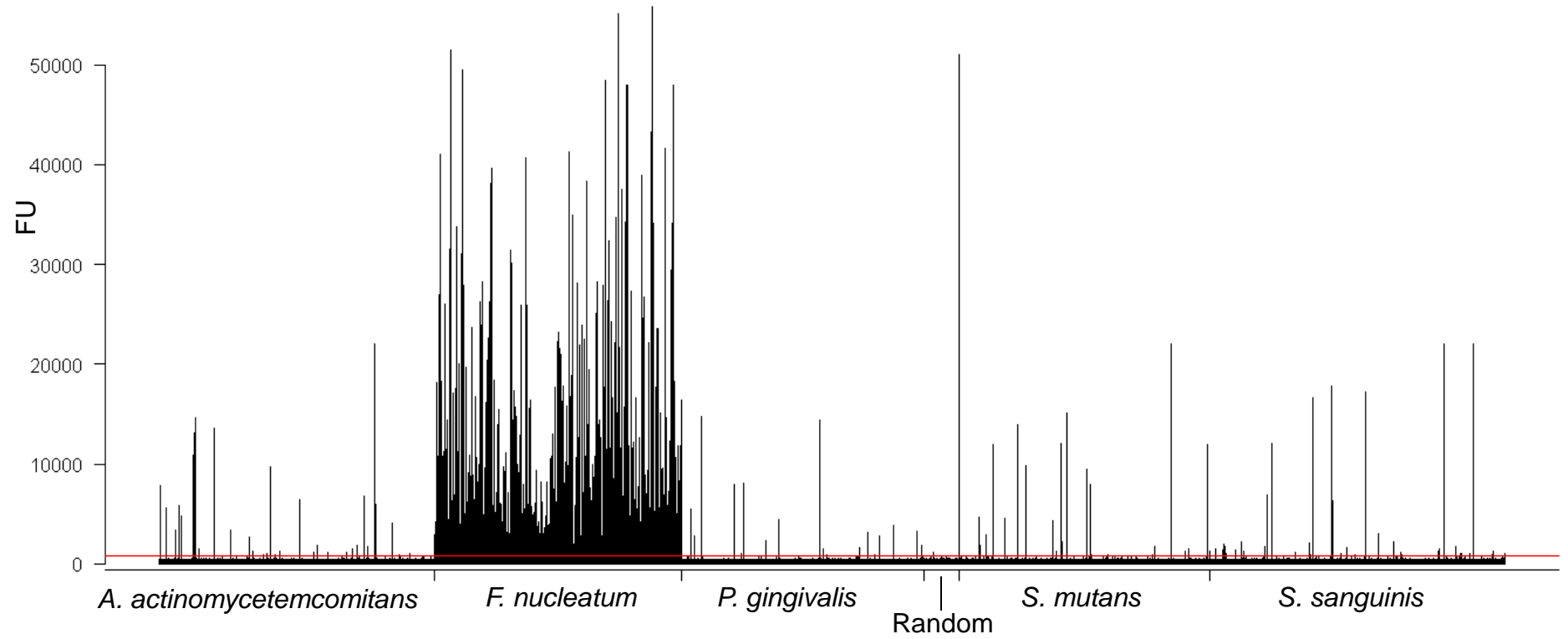
C

P. gingivalis W83



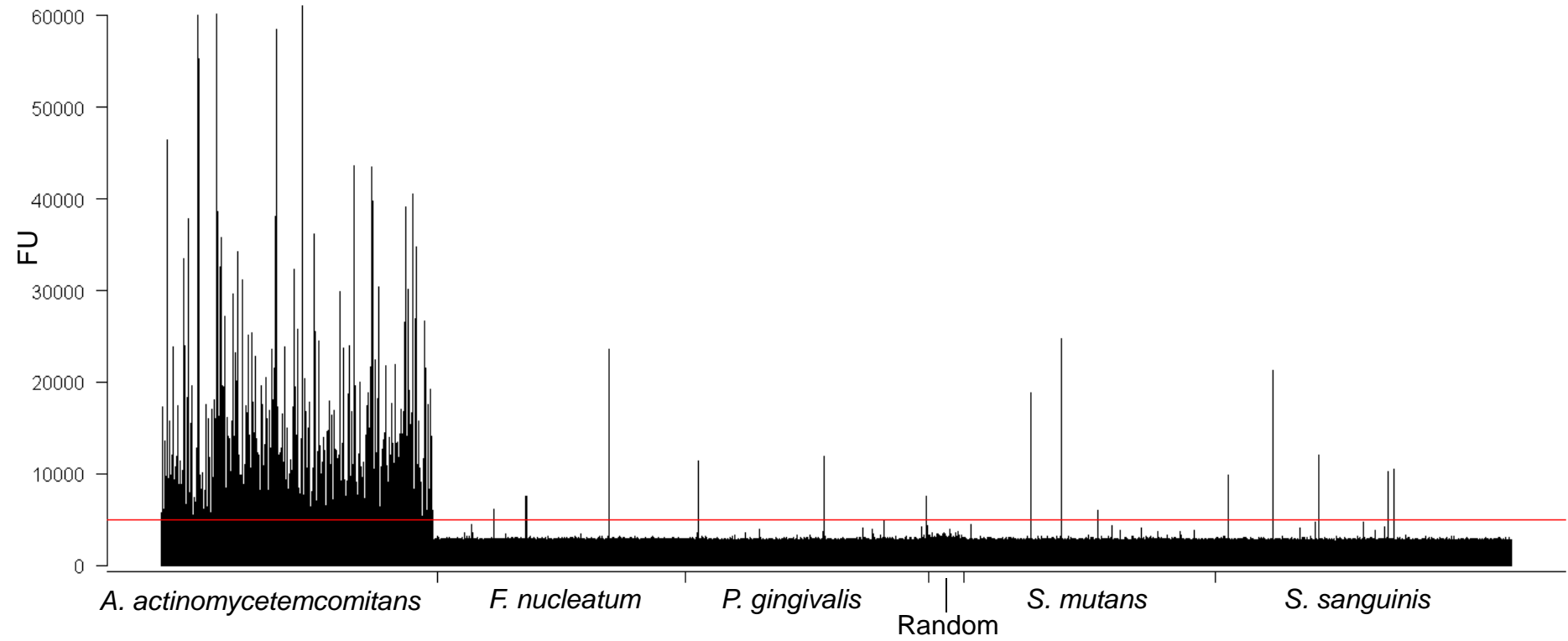
D

F. nucleatum ATCC 25586



E

A. actinomycetemcomitans HK1651



Supporting information Figure S2: Shown are the fluorescence intensities of all probes of all species represented on the array described in this study. The fluorescence intensities of all technical probe replicates were averaged after technical false positive correction.

A: Hybridization with *S. sanguinis* SK36; B: *S. mutans* UA 159; C: *P. gingivalis* W83; D: *F. nucleatum* ATCC 25586; and E: *A. actinomycetemcomitans* HK1651. The red line marks the cutoff value for the declaration of positive signals ($2 \times$ random-mean, each).