

Supplementary data

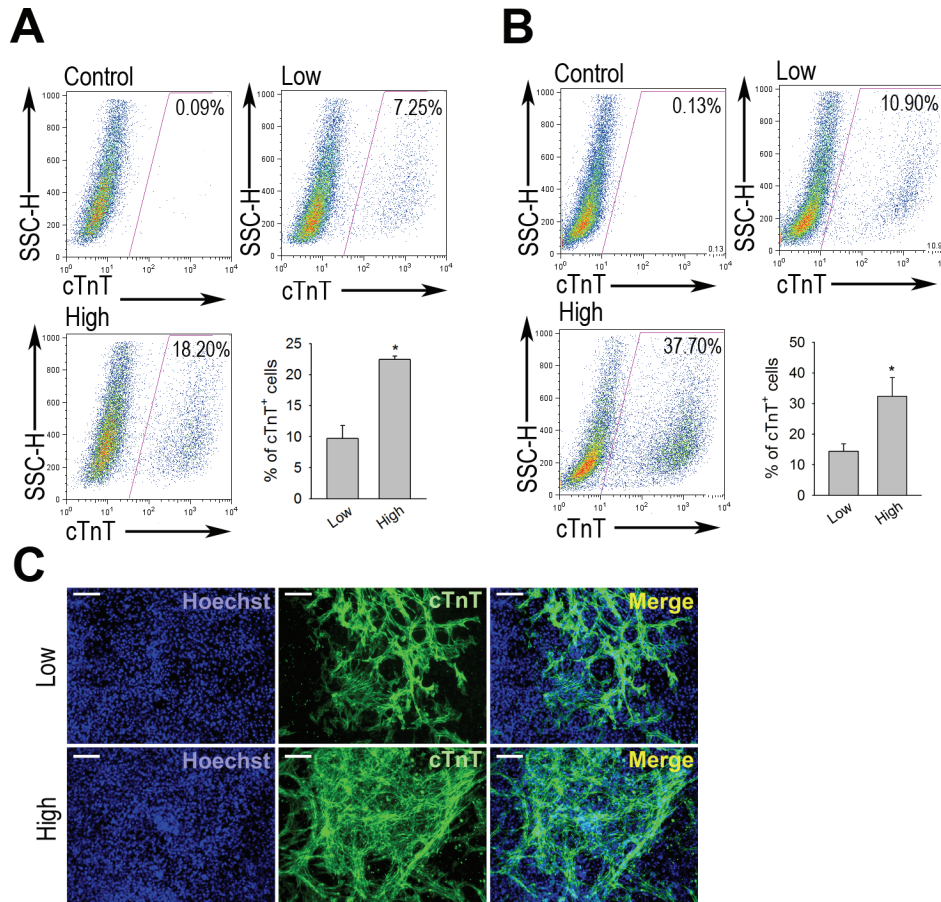


Figure S1. High density EB cultures promotes cardiac differentiation in two different kinds of mESC lines. Flow cytometry profile of differentiated another primary cultured mESC line (A) and E14G mESC line (B) at EB day 10. Differentiated EBs were dissociated into single cells and analyzed for cTnT expression as described in Materials and Methods. Shown are dot plots excluding cell debris. Numbers represent the percentage of cTnT⁺ cells within the indicated region and the figure is representative of six experiments using primary cultured mESC line. (Graphs depict the percentage of cTnT⁺ cells in low and high density cultures. Data are expressed as mean \pm S.E.M. of three independent experiments. (C) Immunostaining showing the cTnT⁺ cells (green fluorescence) of EBs from low and high density EB cultures of primary cultured mESC line. Scale bar, 100 μ M.

Movie S1. Spontaneous contracting EBs cultured in low density.

Movie S2. Spontaneous contracting EBs cultured in high density.