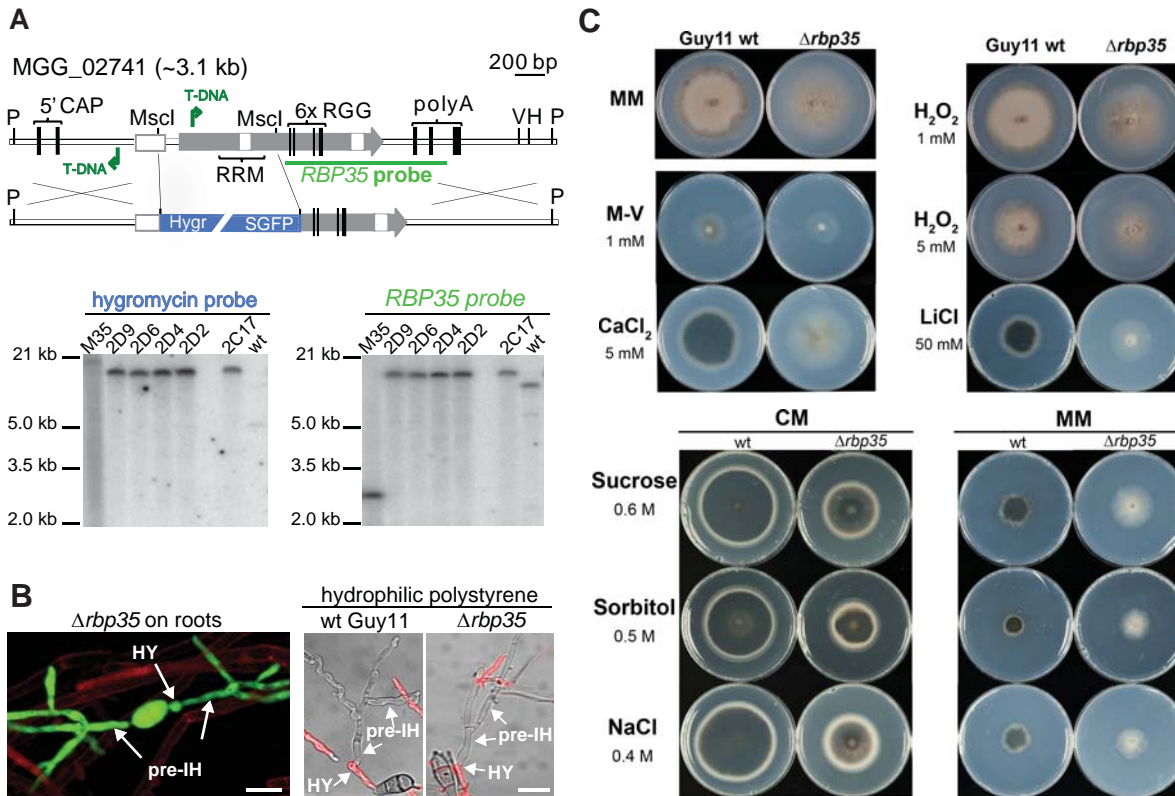


## Supplemental Figure S1



**Figure S1** *RBP35* gene deletion strategy and analysis of  $\Delta rbp35$  phenotype

**(A)** Targeted gene replacement strategy of *RBP35* and identification of  $\Delta rbp35$  mutants by Southern blot analysis. Hybridization pattern of *Hind*III-digested genomic DNA revealed a single fragment of ~11.1 kb using hygromycin and *RBP35* probes in knockout mutants; an expected band of 8.8 kb using *RBP35* probe is observed in the wild type (wt) strain. RRM, RNA recognition motif; Hygr, hygromycin cassette.

**(B)**  $\Delta rbp35$  develops hyphopodia (HY) and pre-invasive hyphae (pre-IH) on roots and hydrophilic polystyrene surfaces as previously described in the wild type strain (Tucker et al., 2010). The red color indicates fluorescent-labeled wheat germ agglutinin which recognises chitin on the cell wall of germ tubes. Scale bar: 15  $\mu$ m.

**(C)** Growth tests on MM or CM media supplemented with stress-related compounds. No differential susceptibility of  $\Delta rbp35$  was observed upon exposure to oxidative stress [methyl viologen (M-V) and hydrogen peroxide ( $H_2O_2$ )], osmotic stress (sucrose, sorbitol and NaCl) or heavy metals ( $CaCl_2$ , LiCl).