

**Cytokine-based high log-scale expansion of functional human dendritic cells from
cord-blood CD34-positive cells**

Yui Harada^{1,2,3}, Yae Okada-Nakanishi³, Yasuji Ueda^{2, 5}, Shunichi Tsujitani³,
Satoru Saito^{2,3}, Terumi Fuji-Ogawa², Akihiro Iida⁵, Mamoru Hasegawa⁵,
Tomohiko Ichikawa¹, and Yoshikazu Yonemitsu^{2,3}

¹Departments of Urology, Chiba University Graduate School of Medicine, Chiba
260-8670, Japan

²Department of Gene Therapy, Chiba University Graduate School of Medicine, Chiba,
Japan

³R&D Laboratory for Innovative Biotherapeutics, Kyushu University Graduate School
of Pharmaceutical Sciences, Fukuoka 812-8582, Japan

⁴Department of Surgery and Science, Graduate School of Medical Sciences, Kyushu
University, Fukuoka 812-8582, Japan

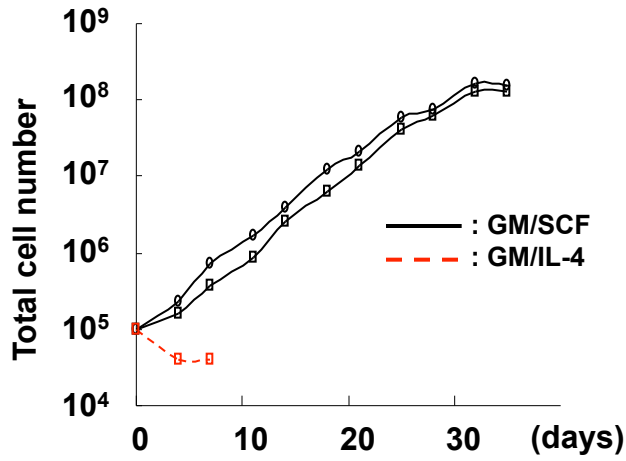
⁵DNAVEC Corporation, Tsukuba, Ibaraki, Japan

All correspondence to: **Yui Harada, Ph.D.**
R&D Laboratory for Innovative Biotherapeutics
Graduate School of Pharmaceutical Sciences, Kyushu University
3-1-1 Maidashi, Higashi-ku, Fukuoka 812-8582, JAPAN
Phone/Fax: +81-92-642-4777

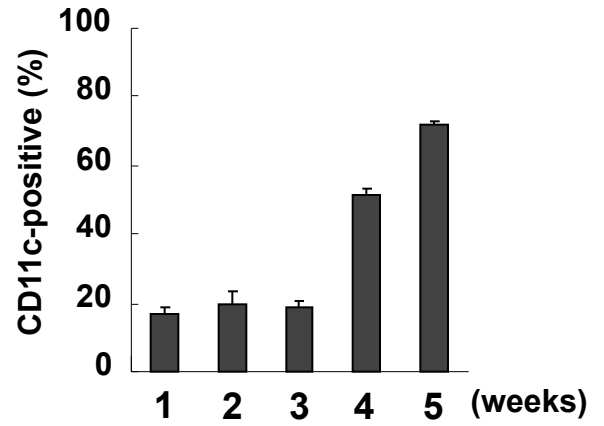
Correspondence and requests for materials should be addressed to Y.H.
(rkfraile@med.kyushu-u.ac.jp)

Supplementary Figure 1.

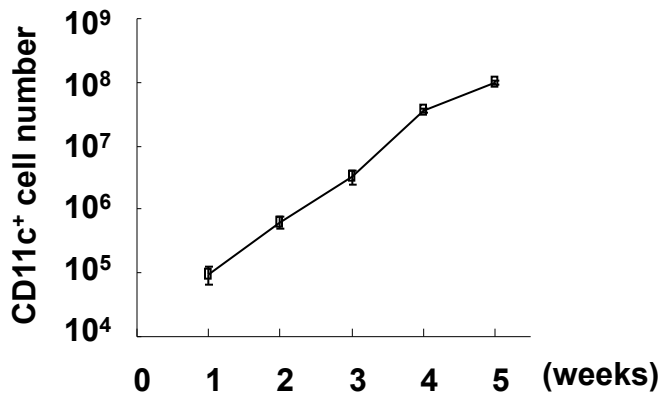
a.



b.

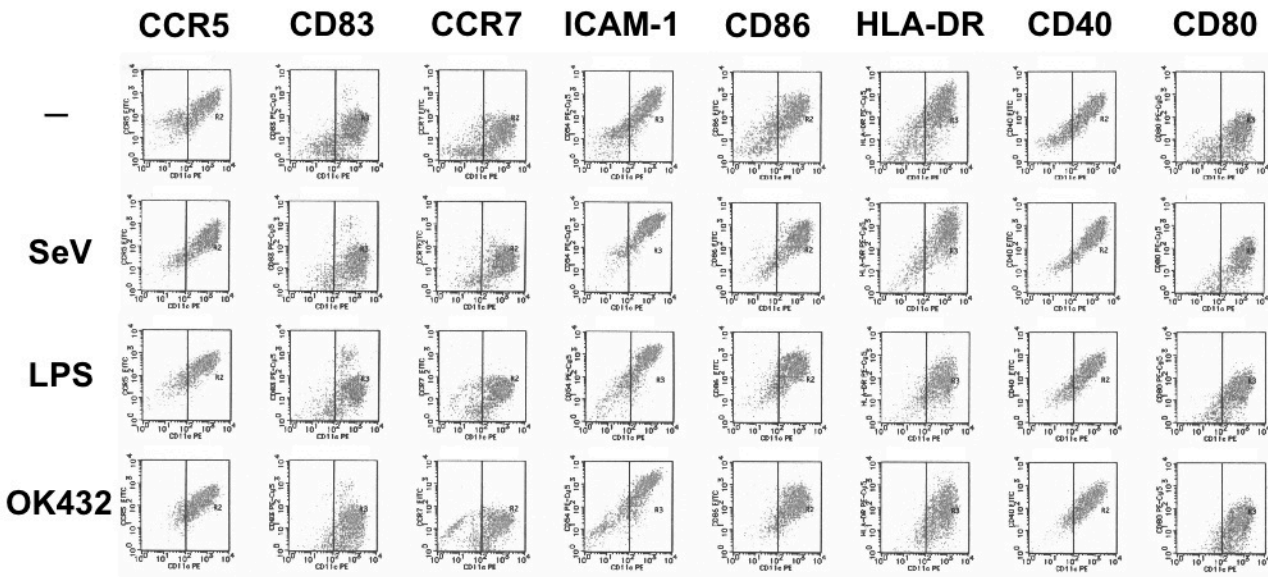


c.

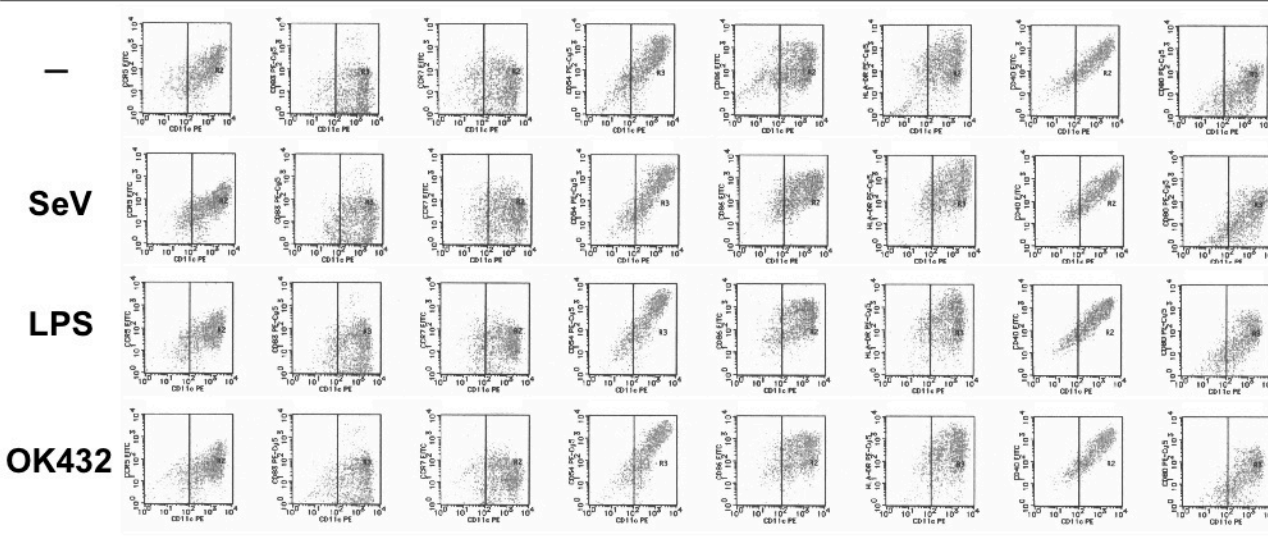


Supplementary Figure 2.

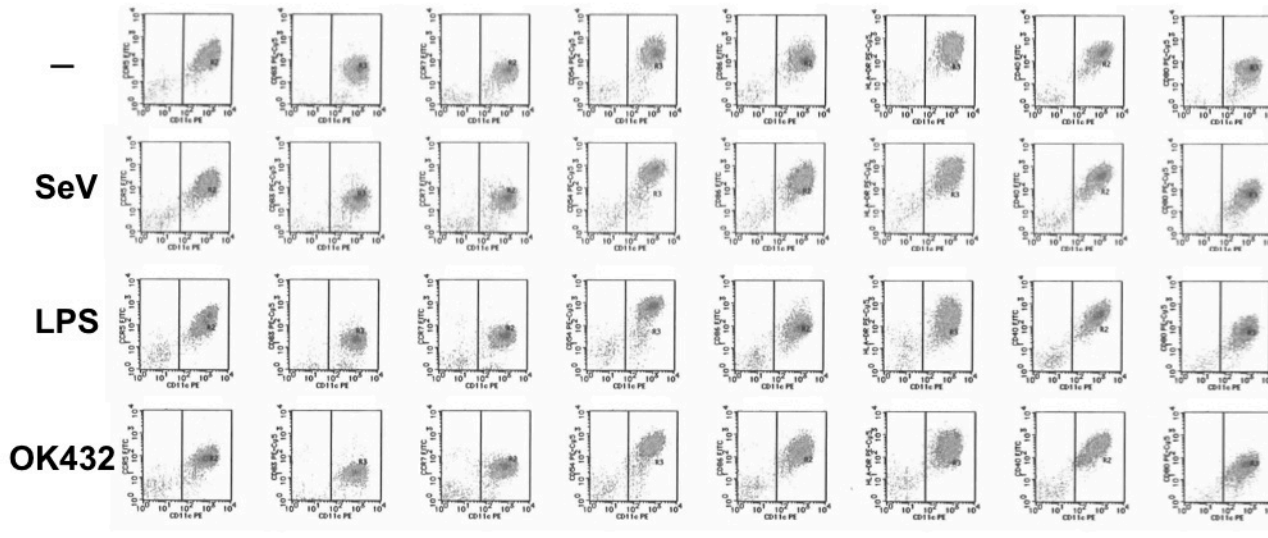
Ex-GSDC



Ex-G4DC



Md-DC



CD11c



Supplementary Table 1.

	Ex-GS	Ex-G4	mdDC
CD1a	-	-	-
CD1d	+/-	-	-
CD3	-	-	-
CD11b	+++	+++	+++
CD11c	+++	+++	+++
CD14	++	+/-	+/-
CD33	+	+	+
CD40	++	+++	++
CD45 (B220)	-	-	-
CD54 (ICAM-1)	+++	+++	+
CD80	+	+	+
CD83	+	+	+
CD86	++	++	++
CD123 (IL-3Rα)	-	-	-
CD195 (CCR5)	+	+/-	+/-
CD197 (CCR7)	+/-	+/-	+/-
HLA-DR	++	++	++
HLA-ABC	++	++	++
CD207 (Langerin)	-	-	-
CD324 (E-cadherin)	+	-	+

Supplementary Figure 1. Cytokine-based expansion of PB CD34⁺ cell-derived CD11c⁺ cells.

a. Growth curve of total cells from PB CD34⁺ cells under GM/SCF (black line) or GM/IL-4 (red line).

b. CD11c-positive ratio of expanded cells under GM-CSF and SCF. The ratio of proliferating cells during cultivation under GM/SCF gradually increased, exceeding 70% after 5 weeks' cultivation.

c. Growth curve of CD11c⁺ cells from PB CD34⁺ cells.

These experiments were repeated twice in 2 individuals.

Supplementary Figure 2. FACS profiles of the DCs.

Supplementary Table 1. Surface markers of each DC.