

# THE LANCET

## **Supplementary webappendix**

This webappendix formed part of the original submission and has been peer reviewed. We post it as supplied by the authors.

Supplement to: Heart Protection Study Collaborative Group. Effects on 11-year mortality and morbidity of lowering LDL cholesterol with simvastatin for about 5 years in 20 536 high-risk individuals: randomised controlled trial. *Lancet* 2011; published online Nov 23. DOI:10.1016/S0140-6736(11)61125-2.

## **Webappendix for “Effects on 11 year mortality and morbidity of lowering LDL cholesterol with simvastatin for about 5 years in 20,536 high-risk individuals”**

### **Tables**

Previously reported post-trial follow-up of vascular outcomes in randomised statin trials	1
Previously reported post-trial and in-trial follow-up of combined non-vascular outcomes in randomised statin trials	2

### **Figures**

Major vascular events during in-trial and post-trial follow-up subdivided by baseline characteristics	3
Cause-specific mortality during in-trial and post-trial follow-up	4
Vascular mortality during in-trial and post-trial follow-up	5
Non-vascular mortality during in-trial and post-trial follow-up subdivided by baseline characteristics	6
Cancer incidence during total follow-up period subdivided by baseline characteristics	7

**Webtable 1: Previously reported post-trial follow-up of vascular outcomes in randomised statin trials**

Trial	In-trial randomised statin comparison	Post-trial follow-up	Clinical outcome	Post-trial events by original allocation		
				Statin	Placebo	OR (95% CI)
4S	20-40 mg S daily vs placebo for 5 y	5 y	Vascular mortality	155 (7.7%)	128 (6.6%)	1.14 (0.90-1.44)
LIPID	40 mg P daily vs placebo for 5 y	2 y	Vascular mortality	130 (3.3%)	163 (4.3%)	0.76 (0.60-0.96)
WOSCOPS	40 mg P daily vs placebo for 6 y	10 y	Non-fatal MI or CHD death	268 (8.6%)	310 (10.3%)	0.82 (0.69-0.96)
			Non-fatal or fatal stroke	161 (5.1%)	176 (5.6%)	0.88 (0.71-1.08)
ASCOT-LLA	10 mg A daily vs placebo for 3 y	2 y	Non-fatal MI or CHD death	59 (1.2%)	91 (1.9%)	0.63 (0.45-0.87)
HPS	40 mg S daily vs placebo for 5 y	6 y	Major Vascular Event	1636 (21.7%)	1566 (22.5%)	0.95 (0.89-1.02)

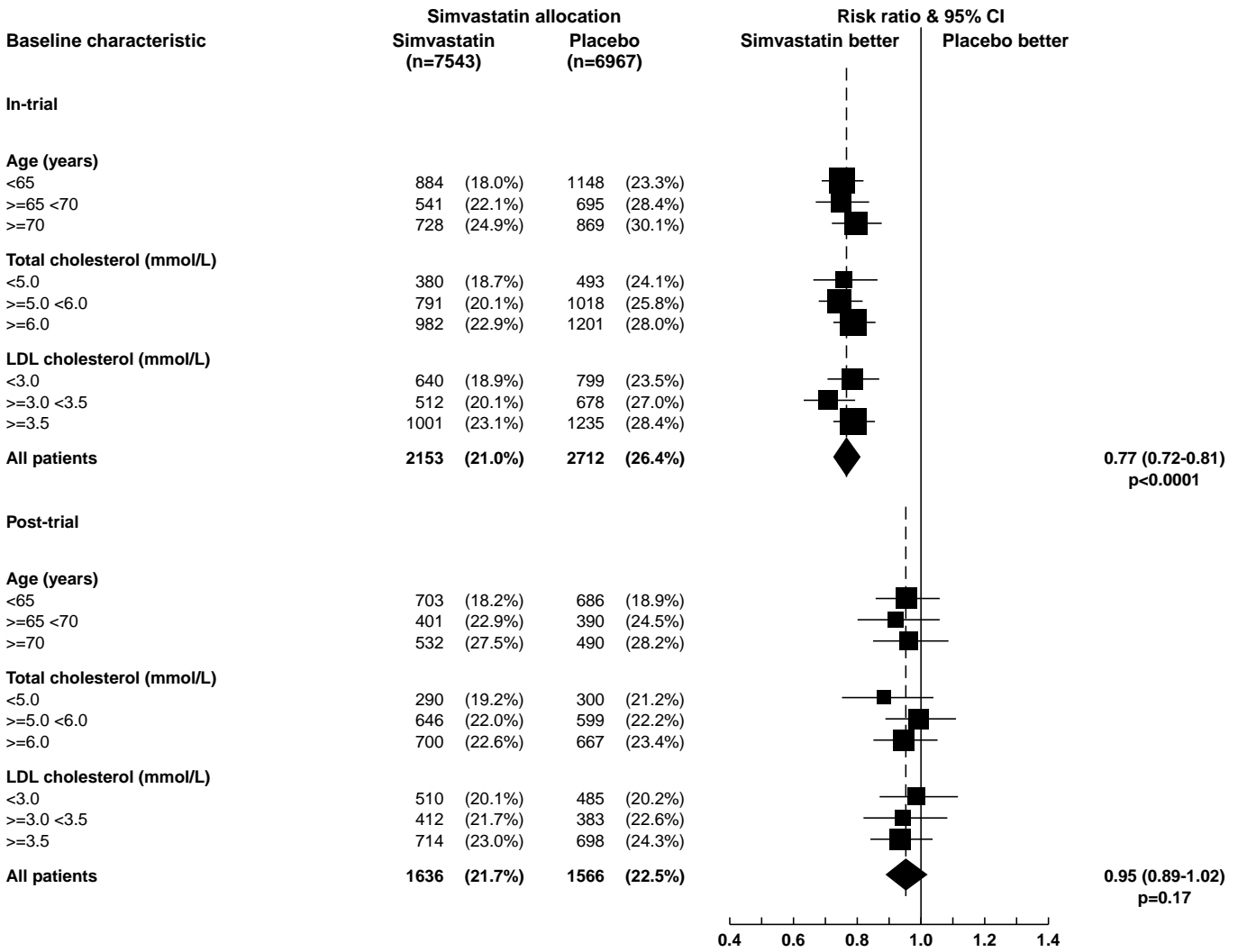
S=simvastatin; P=pravastatin; A=atorvastatin; MI=myocardial infarction; CHD=coronary heart disease

**Webtable 2: Previously reported post-trial and in-trial follow-up of combined non-vascular outcomes in randomised statin trials**

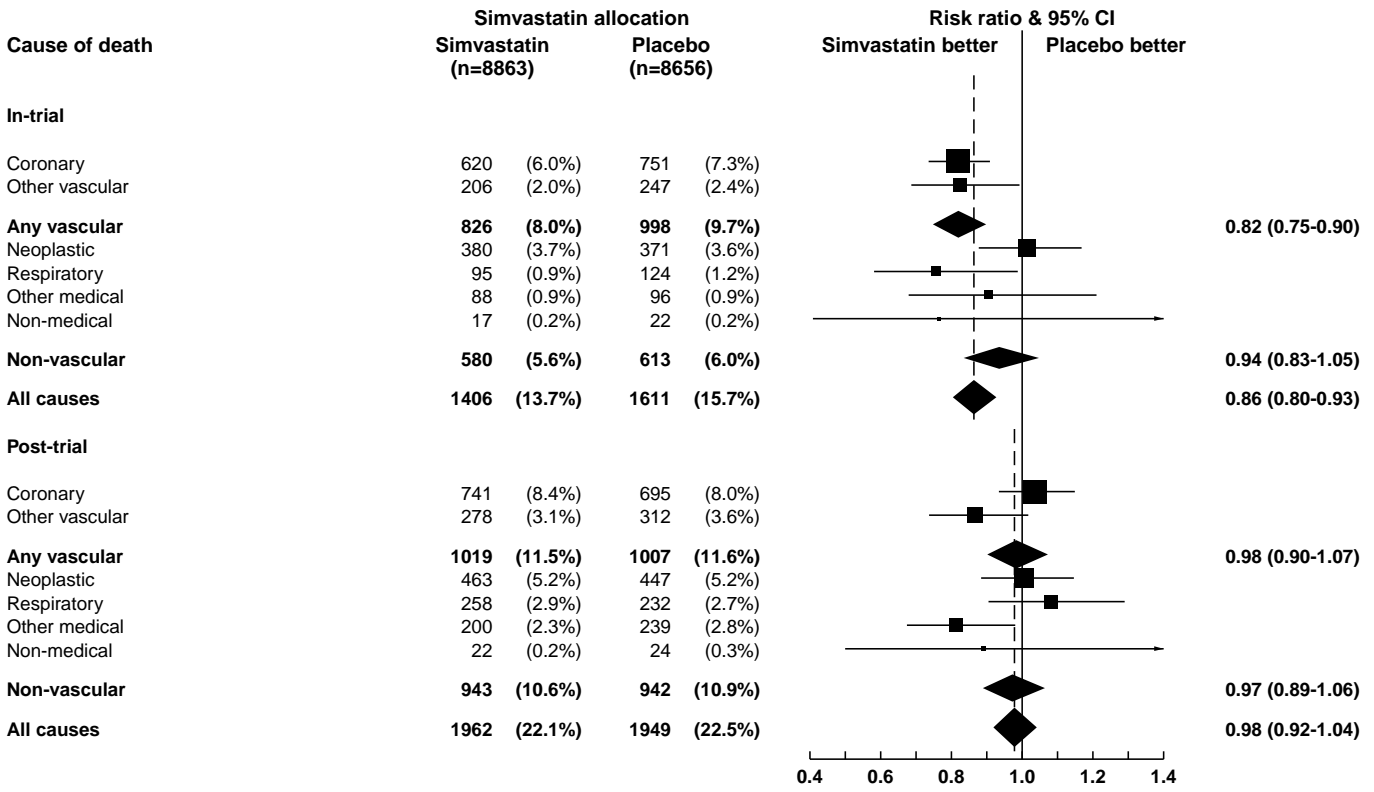
Trial	In-trial randomised statin comparison	In-trial + post-trial follow-up	Clinical outcome	In-trial and post-trial events by original allocation		
				Statin	Placebo	OR (95% CI)
4S	20-40mg S daily vs placebo for 5 y	5 + 5 y	Non-vascular mortality	123 (6.3%)	133 (6.7%)	0.89 (0.70-1.14)
			All cancer incidence	227 (11.7%)	248 (13.9%)	0.88 (0.73-1.05)
LIPID	40mg P daily vs placebo for 5 y	5 + 2 y	Non-vascular mortality	256 (5.7%)	292 (6.5%)	0.87 (0.73-1.03)
			All cancer incidence	499 (11.1%)	526 (11.7%)	0.91 (0.81-1.03)
WOSCOPS	40mg P daily vs placebo for 6 y	6 + 10 y	Non-vascular mortality	367 (11.1%)	377 (11.4%)	0.94 (0.82-1.09)
			All cancer incidence	431 (13.1%)	404 (12.3%)	1.05 (0.92-1.20)
ASCOT-LLA	10mg A daily vs placebo for 3 y	3 + 2 y	Non-vascular mortality	247 (4.8%)	284 (5.5%)	0.86 (0.72-1.02)
HPS	40 mg S daily vs placebo for 5 y	5 + 6 y	Non-vascular mortality	1523 (14.8%)	1555 (15.1%)	0.96 (0.89-1.03)
			All cancer incidence	1749 (17.0%)	1744 (17.0%)	0.98 (0.92-1.05)

S=simvastatin; P=pravastatin; A=atorvastatin; MI=myocardial infarction; CHD=coronary heart disease

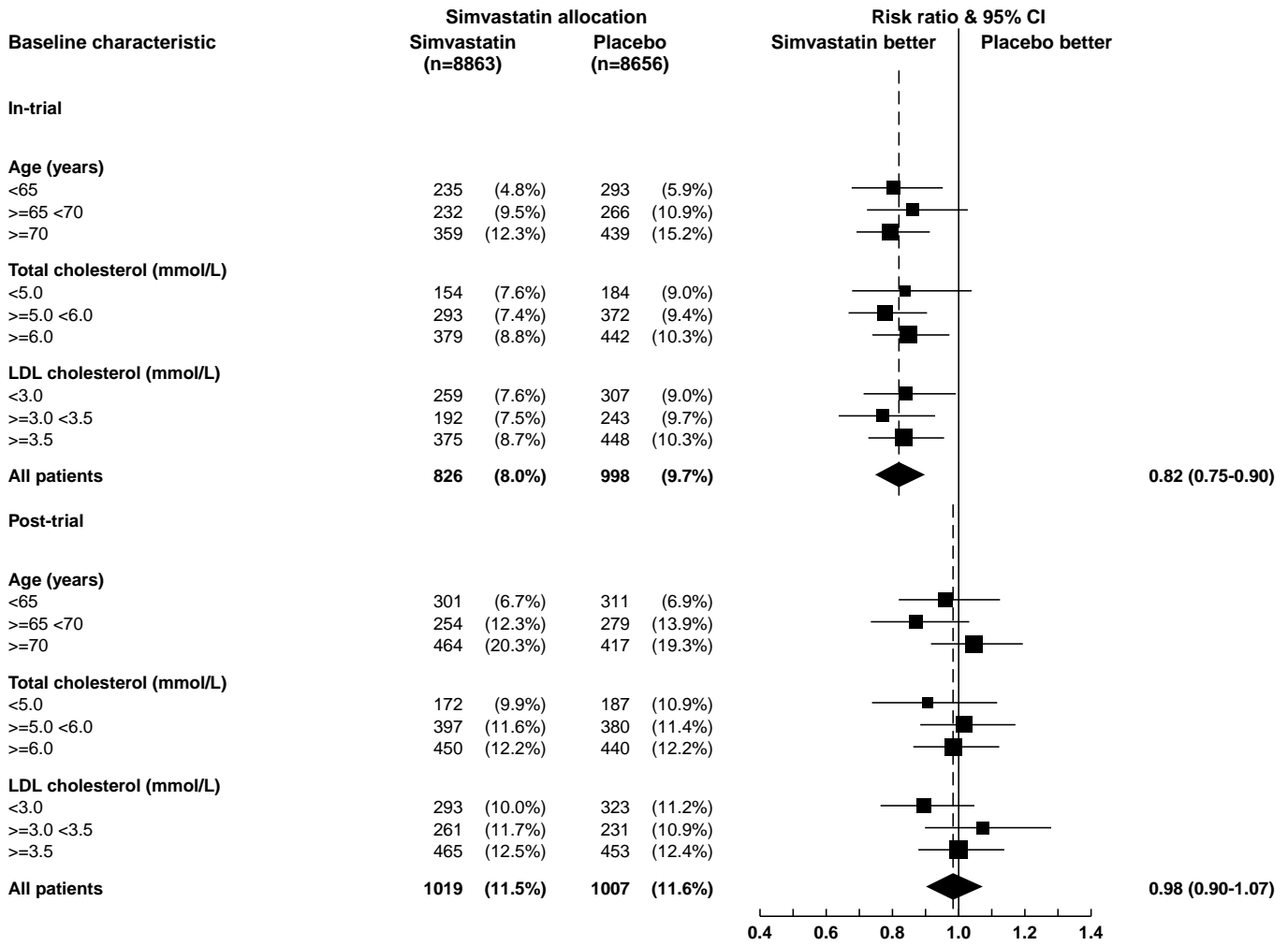
**Webfigure 1: Major vascular events during in-trial and post-trial follow-up subdivided by baseline characteristics**



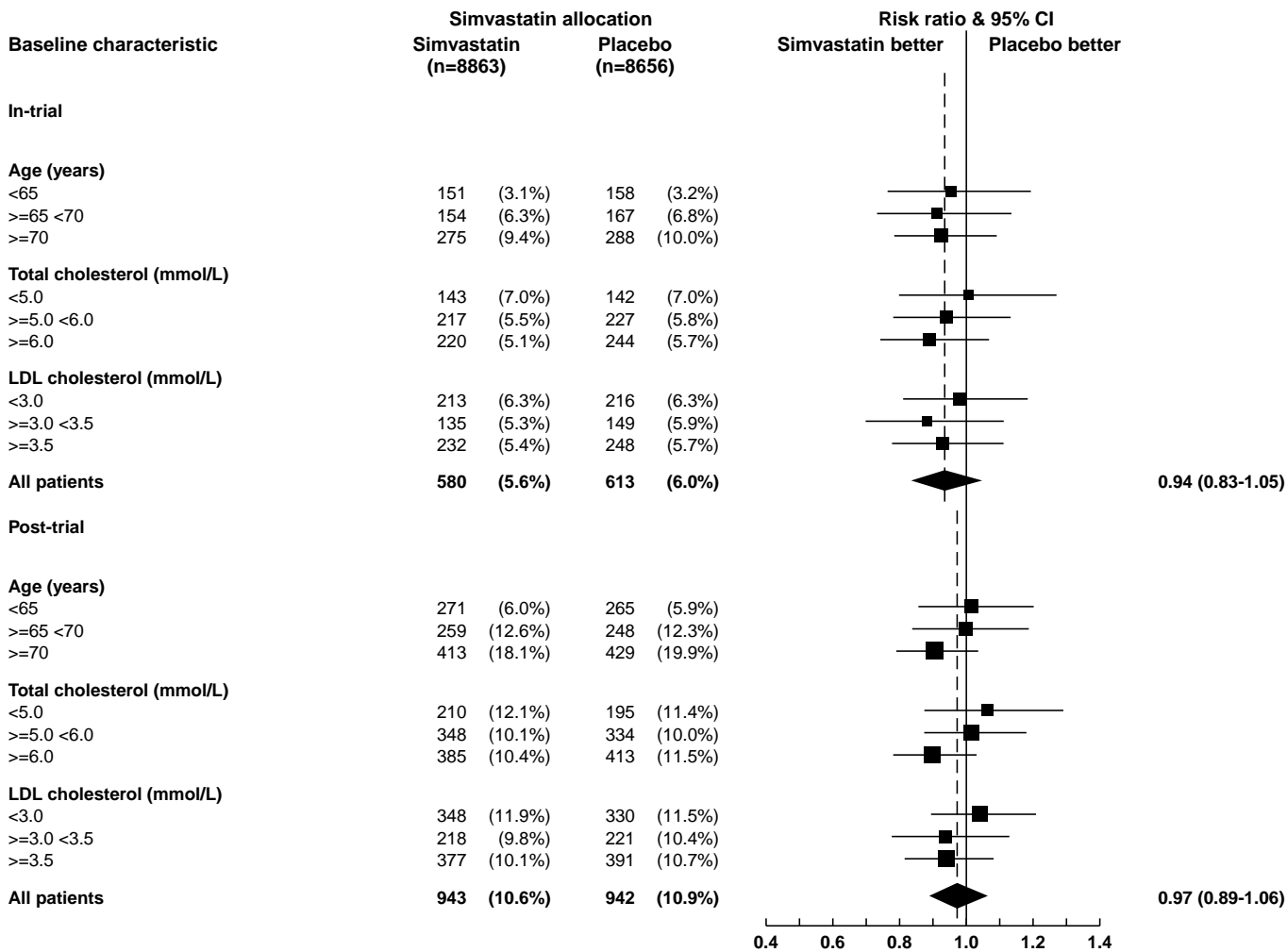
**Webfigure 2: Cause-specific mortality during in-trial and post-trial follow-up**



**Webfigure 3: Vascular mortality during in-trial and post-trial follow-up subdivided by baseline characteristics**



**Webfigure 4: Non-vascular mortality during in-trial and post-trial follow-up subdivided by baseline characteristics**





**Webfigure 5: Cancer incidence during total follow-up period subdivided by baseline characteristics**

