

a)

	Charge state	Parent (m-z)/z	3' N-1	3' N-2	3' N-3
Sense	1	6790.9	6470.9	6150.8	5821.8
	6	1130.8	1077.5	1024.1	969.3
	7	969.1	923.4	877.7	830.7
	8	847.9	807.9	767.9	726.7
Antisense	1	6781.9	6461.8	6141.8	5836.8
	6	1129.3	1076.0	1022.6	971.8
	7	967.8	922.1	876.4	832.8
	8	846.7	806.7	766.7	728.6

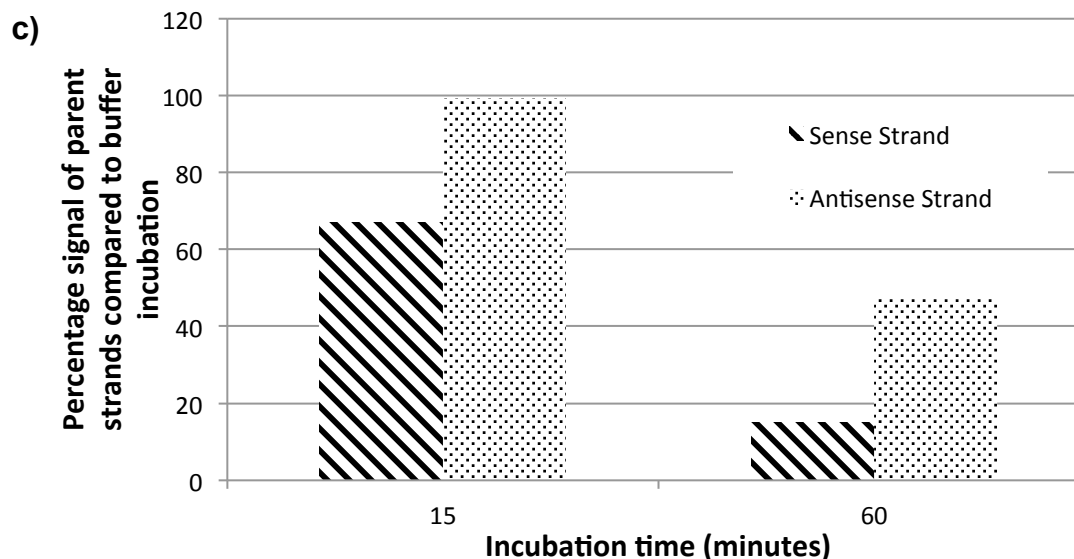
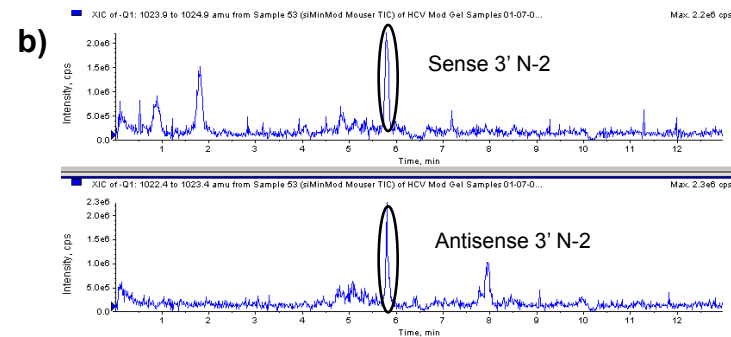


Figure S7: Stability assessment of siRNA using LC-MS/MS. (a) Table showing mass-charge transitions for sense and antisense parent strands, together with identified 3' metabolites (highlighted) after incubation in mouse plasma for 60 minutes. (b) Extracted ion chromatograms of the identified 3' N-2 metabolites. (c) Incubation of siRNA duplex in mouse plasma for 15 and 60 minutes shows more rapid 3' N-2 blunting on the sense strand compared to the antisense strand.