

Original data of Figure 1D

Genotyping PCRs on etidium bromide-stained agarose gel.

Original Data Figure 6B

Western blot analysis of IP#34, 29.11.2007

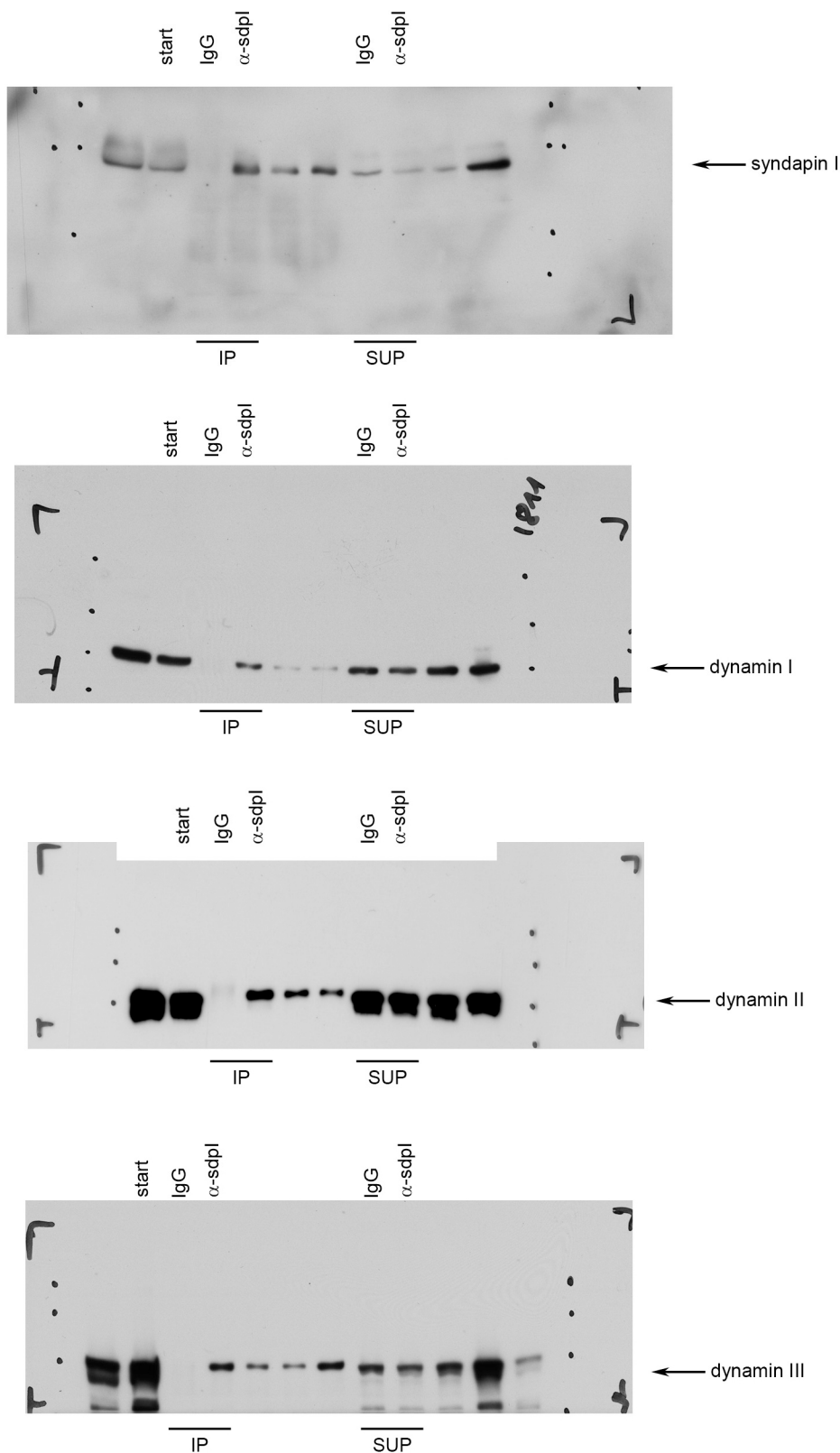
Sdpl-containing complexes were immunisolated from rat brain extracts.

Coimmunoprecipitated proteins were subsequently detected with dynamin-specific antibodies by Western blot.

The gels show start material followed by IP samples and the supernatants (SUP) of IPs with either unrelated IgGs ("IgG", control) or anti-syndapin I (anti-sdpl) antibodies.

Supernatants and IPs were analyzed for the presence of syndapin I (IP), dynamin I (CoIP), dynamin II (CoIP) and dynamin III (CoIP).

For Fig. 6B two and three intercalating samples, respectively, were omitted and only labelled lanes of the blots are shown.



Characterization of fusion proteins

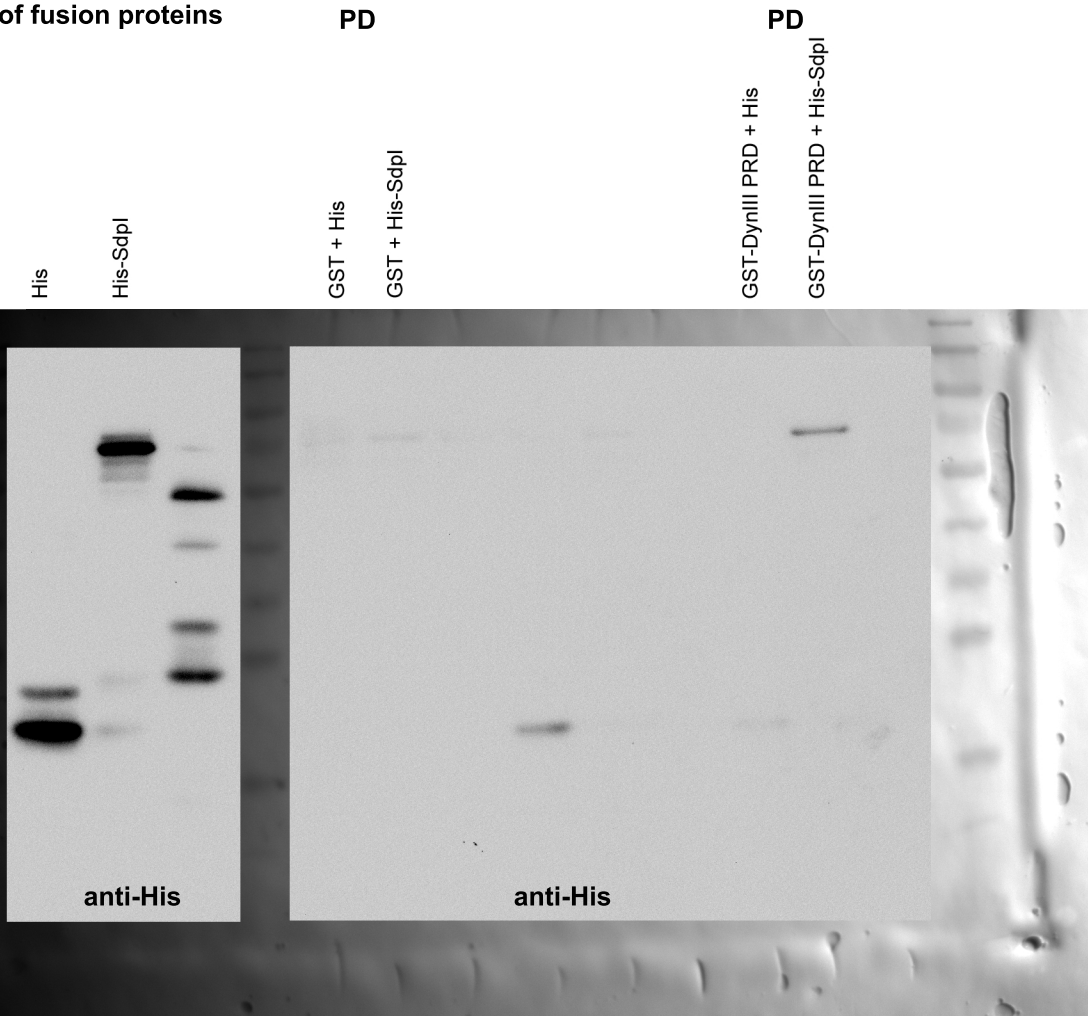


Figure S7

Western blot analysis of pull down #42, 14.10.2009

GST solo bound to beads or GST-dynIII PRD were incubated with His solo or His-sdpl. Start material of His solo ("His") and His-Sdpl is shown on first 2 lanes. Bound proteins of GST incubated either with His ("GST + His") or with His-Sdpl ("GST + His-Sdpl") and GST-dynIII PRD incubated either with His solo ("GST-dynIII PRD + His") or with His-Sdpl ("GST-dynIII PRD + His-Sdpl") were analyzed on the same blot.

Only GST-dynIII PRD was able to sufficiently retard His-Sdpl during the stringend wash conditions prior to elution.

The file shows an overlay of the original ECL-signal arising from the blot detected with an Intas chemolumineszenz imager and a whitel light image of the blot membrane showing the lanes and the protein standard.