

Supplement Figure 1

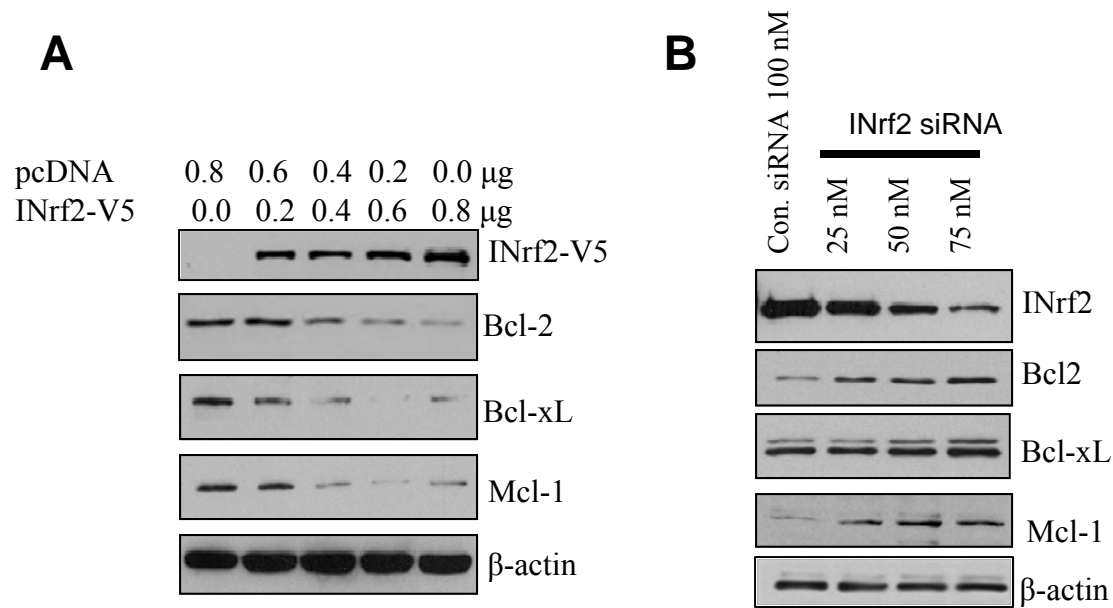


FIGURE S1- **A**, Hepa-1 cells were transfected with control pcDNA vector or INrf2-V5 constructs as indicated for 36h. Cells were lysed in RIPA buffer and sixty micrograms lysates were immunoblotted with anti-Flag antibody, anti-Bcl-2 antibody anti Bcl-xL antibody, anti-Mcl-1 antibody and anti-β-actin antibody. **B**, Hepa-1 cells were transfected with control siRNA or INrf2 siRNA as indicated for 36h. Cells were lysed in RIPA buffer and sixty micrograms lysates were immunoblotted with INrf2, Bcl-2, Bcl-xL, Mcl-1 and β-actin antibody.