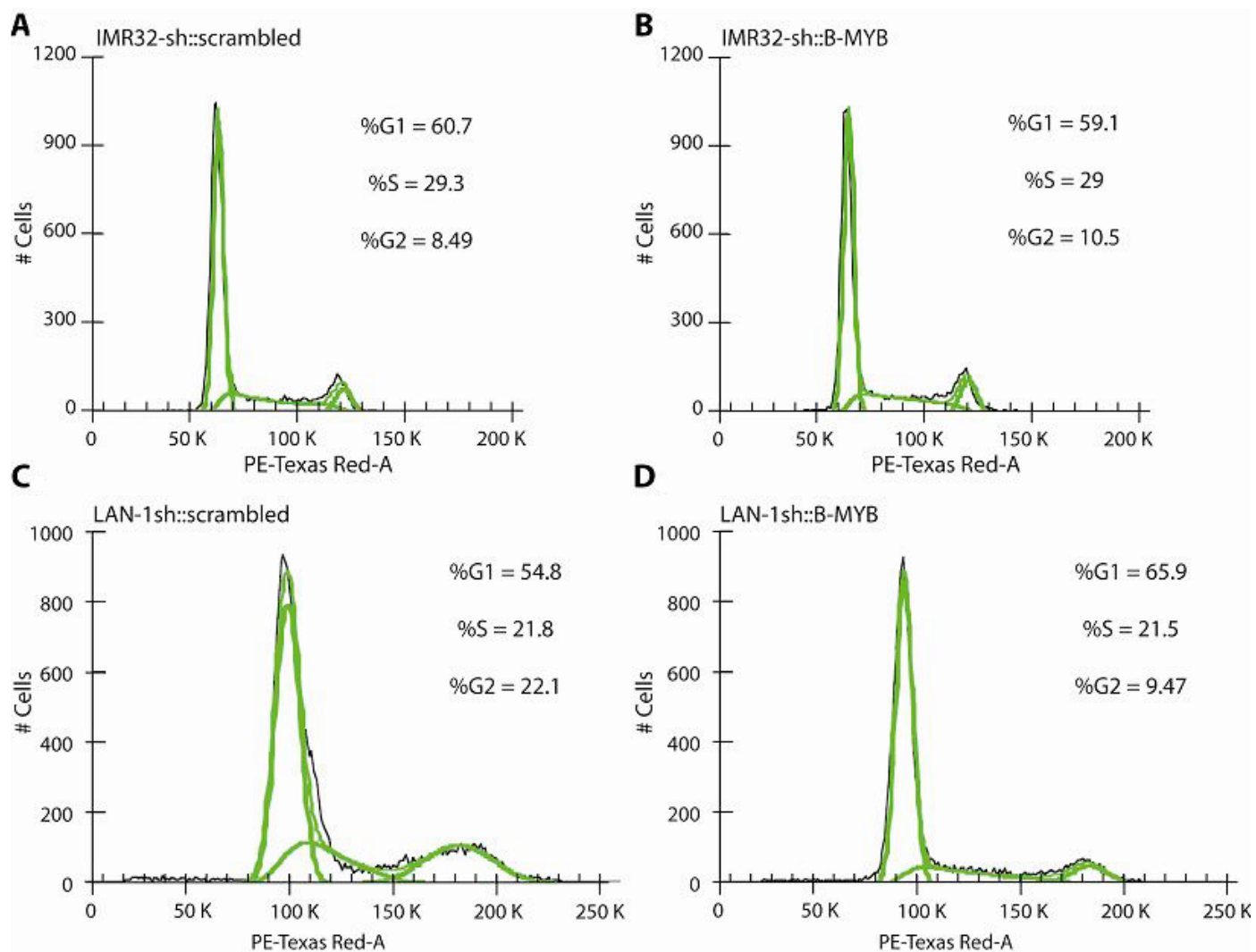


**Figure S1.** Western blot analysis to assess the expression levels of B-MYB in the non MYCN amplified Gimen and ACN cell lines. Expression of Actin was used as a loading control.



**Figure S2.** Cell cycle profile of IMR32 and LAN-1 cell lines infected with lentiviruses expressing B-MYB or scrambled shRNAs. IMR32 or LAN1 cells were infected with sh-scrambled (panels A and C) or sh-B-MYB (panels B and D) lentiviruses, selected with puromycin for 14 days and fixed for FACS analysis. The graph shows the distribution of cells in G1, S and G2. It was not possible to assess apoptosis since dead cells were removed during the selection process.