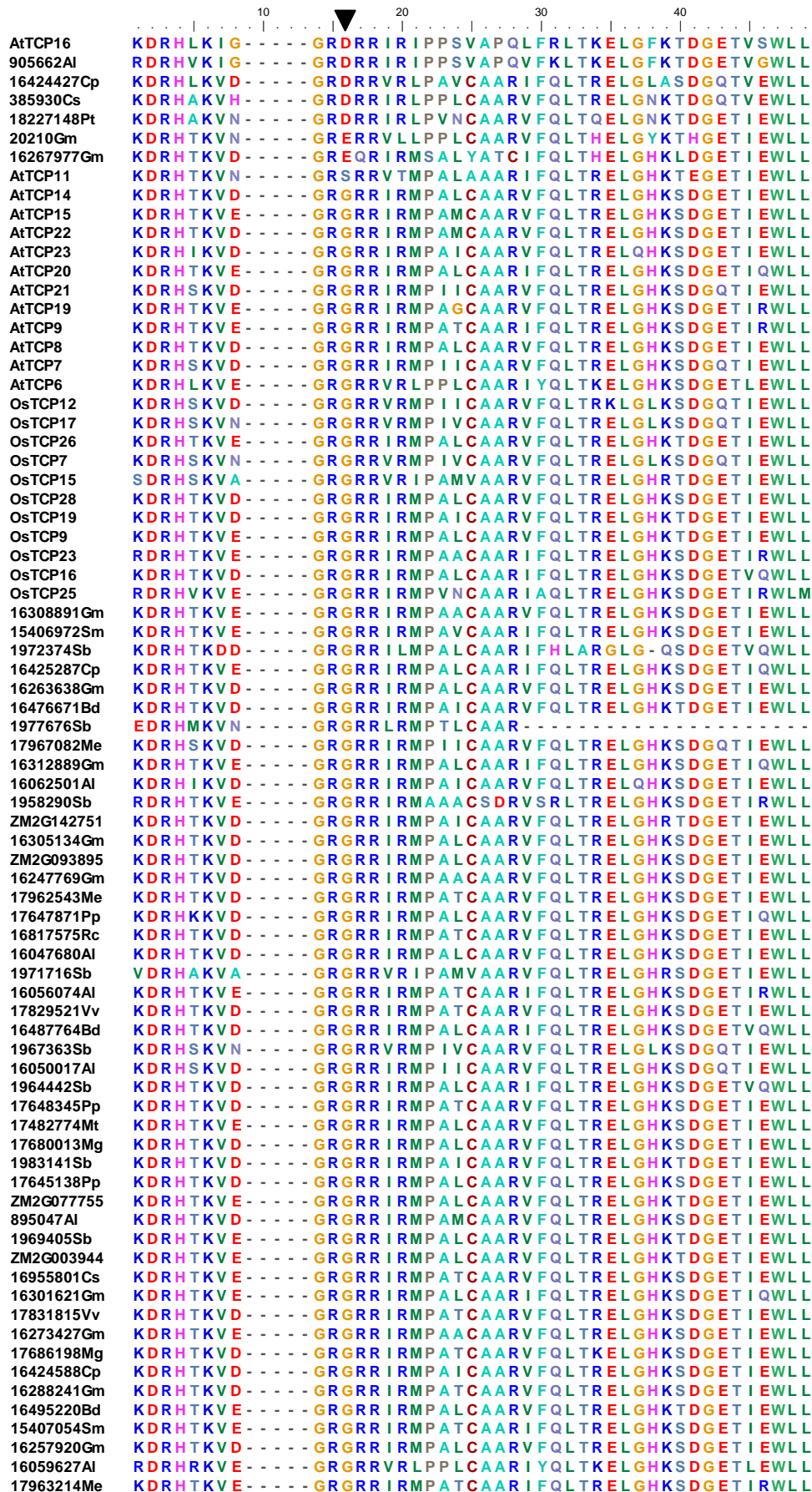


Supplemental Fig. 5. Protein sequence alignment of class I and class II TCP domains. The black arrowhead indicates amino acids located at position 11 (class I) or 15 (class II).



TCP
Class I

▼

17646741Pp	KDRHTKVE	-----GRGRRIRMPALCAARIFQLTRELGHKSDGETIQWLL
1967495Sb	KDRHTKVE	-----GRGRRIRMPALCAARVFLQTRRELGHKTDGETIEWLL
15419540Sm	KDRHTKVE	-----GRGRRIRMPATCAARIFQLTRELGHKSDGETIEWLL
17675517Mg	KDRHTKVE	-----GRGRRIRMPALCAARIFQLTRELGHKSDGETIQWLL
1968723Sb	KDRHSKVD	-----GRGRRIRMPIICAAARVFLQTRRELGHKSDGQTI EWLL
17473522Mt	KDRHTKVE	-----GRGRRIRMPALCAARIFQLTRELGHKSDGETIQWLL
16968477Cs	KDRHTKVD	-----GRGRRIRMPALCAARVFLQTRRELGHKSDGETIEWLL
17666244Pp	KDRHTKVE	-----GRGRRIRMPATCAARVFLQTRRELSHKSDGETIEWLL
1977675Sb	KDRHTKVD	-----GRGRRIRMPALCAARVFLQTRRELGHKSDGETIEWLL
17820701Vv	KDRHTKVD	-----GRGRRIRMPALCAARVFLQTRRELGHKSDGETIEWLL
1973218Sb	KDRHSKVN	-----GRGRRVRMPIVCAARVFLQTRRELGLKSDGQTI EWLL
16300993Gm	KDRHTKVD	-----GRGRRIRMPATCAARVFLQTRRELGHKSDGETIEWLL
16500096Bd	KDRHTKVD	-----GRGRRIRMPALCAARVFLQTRRELGHKSDGETIEWLL
18063809Ph	KDRHTKVD	-----GRGRRIRMPATCAARIFQLTRELGHKSDGETIEWLL
18068748Ph	KDRHTKVD	-----GRGRRIRMPATCAARIFQLTRELGHKSDGETIEWLL
18050840Ph	KDRHTKVD	-----GRGRRIRMPATCAARIFQLTRELGHKSDGETIEWLL
18042157Ph	KDRHTKVD	-----GRGRRIRMPATCAARIFQLTRELGHKSDGETIEWLL
18159388Ac	KDRHTKVD	-----GRGRRIRMPATCAARVFLQTRRELGHKSDGETIEWLL
18209605Pt	KDRHTKVE	-----GRGRRIRMPALCAARIFQLTRELGHKSDGETIQWLL
18216113Pt	KDRHKKE	-----GRGRRIRIPALCAARIFQLTRELEHKSDDGETIQWLL
18197064Si	KDRHTKVD	-----GRGRRIRMPAICAAARVFLQTRRELGHKTDGETIEWLL
18231329Pt	KDRHTKVD	-----GRGRRIRMPALCAARVFLQTRRELGHKSDGETIEWLL
18220074Pt	KDRHTKVD	-----GRGRRIRMPAMCAARVFLQTRRELGHKSDGETIEWLL
18221392Pt	KDRHTKVD	-----GRGRRIRMPAMCAARVFLQTRRELGHKSDGETIEWLL
18234285Pt	KDRHKKE	-----GRGRRIRMPALCAARIFQLTRELGKNSDGETIQWLL
18150763Ac	KDRHTKVD	-----GRGRRIRMPALCAARIFQLTRELGHKSDGETIQWLL
18225061Pt	KDRHTKVD	-----GRGRRIRMPALCAARVFLQTRRELGHKSDGETIEWLL
18173673Si	KDRHTKVE	-----GRGRRIRMPALCAARVFLQTRRELGHKTDGETIEWLL
18142751Ac	KDRHTKVD	-----GRGRRIRMPAVCAARVFLQTRRELGHKSDGETIEWLL
18225571Pt	KDRHTKVD	-----GRGRRIRMPATCAARVFLQTRRELGHKSDGETIEWLL
18238295Pt	KDRHTKVE	-----GRGRRIRMPALCAARIFQLTRELGHKSDGETIQWLL
18234142Pt	KDRHTKVE	-----GRGRRVRMPATCAARIFQLTRELGHKSDGETIRWLL
16499368Bd	KDRHTKVE	-----GRGRRIRMAAPCAARVARLTLRELGHKSDGETIRWLL
16305529Gm	KDRHTKVE	-----GRGRRIRIPATCAARIFQLTRELGHKSDGETIRWLL
18246527Pt	KDRHTKVE	-----GRGRRIRMPAACAAARIFQLTRELGKSDGETIRWLL
16498028Bd	KDRHTKVD	-----GRGRRIRMPAMCAARVFLQTRRELGHKTDGETIEWLL
16822587Rc	KDRHTKVE	-----GRGRRIRMPATCAARIFQLTRELGHKSDGETIRWLL
17661007Pp	KDRHTKVN	-----GRGRRVRMPAMCAARIFQLTRELGHRSDGETIEWLL
16281410Gm	KDRHTKVE	-----GRGRRIRMPATCAARIFQLTRELGHKSDGETIRWLL
ZM2G178603	KDRHSKVD	-----GRGRRVRMPIVCAARVFLQTRRELGLKSDGQTI EWLL
ZM2G096610	ADRHAKE	-----GRGRRVRIPAMVAARVFLQTRRELGHRTDGETIEWLL
ZM2G445944	KDRHSKVD	-----GRGRRIRMPIICAAARVFLQTRRELGHKSDGQTI EWLL
17696794Mg	KDRHTKVN	-----GRGRRVRMPALCAARVFLQTRRELGHRSDDGETIEWLL
16499383Bd	KDRHTKVE	-----GRGRRIRMPAACAAARIFQLTRELGHKSDGETIRWLL
168431700s	-----	-----RLSVPTSIAFYDIQDRLGVNRPSPKSI EWLI
16290997Gm	KDRHTKVN	-----GRGRRVRMPPLCAARIFQLTRELGHRSDGETIEWLL
17834941Vv	KDRHTKVE	-----GRGRRIRMPATCAARIFQLTRELGHKSDGETIRWLL
16258200Gm	KDRHTKVE	-----GRGRRIRIPATCAARIFQLTRELGHKSDGETIRWLL
908782Al	KDRHSKVD	-----GRGRRIRMPIICAAARVFLQTRRELGHKSDGQTI EWLL
16250847Gm	KDRHTKVE	-----GRGRRIRMPATCAARIFQLTRELGHKSDGETIRWLL
ZMAC199782	KDRHTKVE	-----GRGRRIRMAAACAAARVARLTLRELGHKSDGETIRWLL
16815667Rc	KDRHSKVD	-----GRGRRIRMPIICAAARVFLQTRRELGHKSDGQTI EWLL
16495344Bd	KDRHSKVD	-----GRGRRIRMPIICAAARVFLQTRRELGHKSDGQTI DRSA
18205895Si	KDRHSKVN	-----GRGRRVRMPIVCAARVFLQTRRELGLKSDGQTI EWLL
18180899Si	KDRHTKVE	-----GRGRRIRMAAPCAARVARLTLRELGHKSDGETIRWLL
16500844Bd	SDRHAKE	-----GRGRRVRIPAMVAARVFLQTRRELGHRTDGETIEWLL
18236843Pt	KDRHTKVE	-----GRGRRIRIPATCAARIFQLTRELGHKSDGETIRWLL
18229840Pt	KDRHTKVE	-----GRGRRVRMPATCAARIFQLTRELGHKSEGETIRWLL
18163482Ac	KDRHSKVD	-----GRGRRIRMPIICAAARVFLQTRRELGHKSDGQTI EWLL
18164188Ac	KDRHTKVE	-----GRGRRIRMPATCAARIFQLTRELGHKSDGETIRWLL
17829417Vv	KDRHTKVE	-----GRGRRIRIPATCAARIFQLTRELGHKSDGETIRWLL
18206849Pt	KDRHSKVD	-----GRGRRIRMPIICAAARVFLQTRRELGHKSDGQTI EWLL
ZM2G078077	KDRHSKVN	-----GRGRRVRMPIVCAARVFLQTRRELGLKSDGQTI EWLL
16502200Bd	KDRHSKVN	-----GRGRRVRMPIVCAARVFLQTRRELGLKSDGQTV EWLL
17681482Mg	KDRHTKVE	-----GRGRRIRMPAACAAARIFQLTRELGHKSDGETIRWLL
ZM2G465091	KDRHSKVN	-----GRGRRVRMPIVCAARVFLQTRRELGLKSDGQTI EWLL
18223745Pt	KDRHTKVE	-----GRGRRIRMPATCAARIFQLTRELGHKSDGETIRWLL
17672532Mg	KDRHSKVD	-----GRGRHIRMPIIYAAGVFLQTRRELGHKSDGQTI EWLL
17833975Vv	KDRHSKVD	-----GRGRRIRMPIICAAARVFLQTRRELGHKSDGQTI EWLL
17668341Pp	KDRHTKVE	-----GRGRRIRMPATCAARIFQLTRELGHKSDGETIRWLL
17674803Mg	KDRHAKIN	-----GCGRRVRIPALAAARIFQLTRELGNRSDGDTV EWLL
16278059Gm	KDRHSKVD	-----GRGRRIRMPIICAAARVFLQTRRELGHKSDGQTI EWLL
16493989Bd	KDRHSKVN	-----GRGRRVRMPIVCAARVFLQTRRELGLKSDGQTI EWLL
16266669Gm	KDRHTKVE	-----GRGRRIRMPATCAARIFQLTRELGHKSDGETIRWLL
18170681Si	KDRHSKVD	-----GRGRRIRMPIICAAARVFLQTRRELGHKSDGQTI EWLL
Ci018801	KDRHSKVD	-----GRGRRIRMPIICAAARVFLQTRRELGHKSDGQTI EWLL
Ci016144	KDRHTKVE	-----GRGRRIRMPALCAARIFQLTRELGHKSDGETIQWLL
Ci015044	KDRHTKVE	-----GRGRRIRMPATCAARIFQLTRELGHKSDGETIRWLL
Ci021764	KDRHTKVN	-----GRGRRVRMPPLCAARIFQLTRELGHRSDGETIEWLL

TCP Class I

▼

Ci015906	KDRHTKVD-----GRGRRIRMPAVCAARVFQLTRELGHKSDGETIEWLL
Ci018374	KDRHKKVD-----GRGRRIRMPALCAARIFQLTRELGHKSDGETIQWLL
Ci012352	KDRHTKVE-----GRGRRIRMPAACAAARVFQLTRELGHKSDGETIEWLL
C013545	KDRHTKVE-----GRGRRIRIPATCAARIFQLTRELGHKSDGETVRWLL
Ci011097	KDRHTKVD-----GRGRRIRMPALCAARVFQLTRELGHKSDGETIEWLL
Eg021099	KDRHTKVE-----GRGRRVMPAACAAARIFQLTRELGHKSDGETIRWLL
Eg038354	KDRHTKVD-----GRGRRIRMPAQCAARVFQLTRELGHKTDGETIEWLL
Eg018268	KDRHTKVE-----GRGRRIRMPAACAAARIFQLTRELGHKNDGETVRWLL
Eg011715	KDRHTKVD-----GRGRRIRMPAVCAARVFQLTRELGHKSDGETIEWLL
Eg051391	RDRHTKVN-----GRGRRIRIPALCAARIFQLTRELGHKSDGETIEWLL
Eg053624	KDRHTKVD-----GRGRRIRMPALCAARVFQLTRELGHKSDGETIEWLL
16317250Gm	KDRHTKVE-----GRGRRIRMPATCAARIFQLTRELGHKSDGETIRWLL
16423768Cp	KDRHSKVD-----GRGRRIRMPAICAAARVFQLTRELGHKSDGQTIWLL
16316582Gm	KDRHSKVD-----GRGRRIRMPAICAAARVFQLTRELGHKSDGQTIWLL
18251033Pt	KDRHTKVE-----GRGRRVMPALTAARIFQLTRELGHKSDGETIEWLL
16421375Cp	KDRHTKVN-----GRGRRVMPALCAARIFQLTRELGHKSDGETIEWLL
17651445Pp	KDRHTKVE-----GRGRRIRIPATCAARIFQLTRELGHKSDGETVRWLL
17677950Mg	KDRHTKVE-----GRGRRIRMPAACAAARVFQLTRELGHKSDGETIRWLL
17650534Pp	KDRHSKVCCTAKG-PRDRRVRLAAHTAIQFYDVQDRLLGYDRPSKAVDWLI
16263800Gm	KDRHSKVCCTIRG-LRDRRIRLSVPTAIQLYDLQDRLLGLSQPSKVIDWLL
ZMAC205574	KDRHSKVCCTARG-PRDRRVRLSAHTAIQFYDVQDRLLGYDRPSKAVDWLI
16407854Cp	RDRHSKINTAKG-PRDRRMRLSLVAKAEFFGLQDMLGYEKASKTVEWLL
16410588Cp	KDRHSKVWTSKG-LRDRRVRLSVTTAIQFYDLQDRLLGYDQPSKAVEWLI
16472204Bd	KDRHSKVWTSKG-VRDRRVRLAVPTAIQFYDLQDRLLGFQDQPSKAVDWLL
16411203Cp	KDRHSKIFTAQG-LRDRRVRLSIDIARKFFALQDMLGFDKASKTLDWLL
16481658Bd	KDRHSKVCCTARG-PRDRRVRLSAHTAIQFYDVQDRLLGYDRPSKAVDWLI
16472785Bd	KDRHSKICTAGG-MRDRRMRLSLDVARKFFALQDMLGFDKASKTVQWLL
16478318Bd	KDRHSKVYTAGG-IRDRRVRLSVATAIQFYDLQDRLLGYDQPSKAVEWLI
16317170Gm	KDRHSKIHTSQG-LRDRRVRLSSEIARKFFDLQDMLFEDKPSNTFDWLF
16428802Cp	KDRHSKVCCTVRG-LRDRRIRLSVPTAIQLYDLQDRLLGLNQPSKVIDWLL
Ci032670	KDRHSKIYTAQG-PRDRRMRLSLQIARKFFDLQDMLGFDKASKTIEWLL
Ci028015	RDRHSKICTAQQ-FRDRRVRLSIEIAREFFDLQDMLGFDKASKTLEWLF
Ci015257	KDRHSKVYTSKG-PRDRRVRLSAHTAIQFYDVQDRLLGYDRPSKAVDWLI
Ci008223	KDRHSKVWTSKG-LRDRRVRLSVTTAIQFYDLQDRLLGVYDQPSKAVEWLI
Ci010976	KDRHSKVCCTAKG-PRDRRVRLSAHTAIQFYDVQDRLLGYDRPSKAVDWLI
Ci032667	KDRHSKINTAKG-PRDRRMRLSLDVARKFFDLQDMLGYDKASKTVEWLM
Eg050438	KDRHSKVHTAKG-PRDRRVRLSAYTAIQFYDVQDRLLGFDRPSKAVDWLI
C013585	KDRHSKVCCTIRG-LRDRRIRLSVPTAIQLYDLQDRLLGLSQPSKVIDWLL
C012071	KDRHSKVCCTIRG-LRDRRVRLSVPTAIQLYGLQDRLLGLNQPSKVVWLL
CAOT1262Sm	KDRHSKVNTRAG-PRDRRVRLSVSTAIQFYDIQDRLLGYDQPSKAIWLL
Eg018326	KDRHSKVRTVRG-LRDRRIRLSAPAAVQLYYLQDILGLTQPSKVIDWLI
Eg017323	KDRHSKVYTAGG-PRDRRVRLSAHTAIQFYDVQDRLLGYDRPSKAVDWLI
Sm15407669	KDRHSKVFTAKG-PRDRRVRLSVSTAIQFYDVQDRLLGYDQPSKAVEWLM
110V6Ph	KDRHSKVNTRAG-PRDRRVRLSVPTAVQFYDVQDRLLGFQDQPSKAVEWLI
OsTCP21	KDRHSKVYTAGG-IRDRRVRLSVSTAIQFYDLQDRLLGYDQPSKAIWLI
OsTCP1	KDRHSKVCCTARG-PRDRRVRLSAHTAIQFYDVQDRLLGYDRPSKAVDWLI
AtTCP10	KDRHSKVFTSKG-PRDRRVRLSAHTAIQFYDVQDRLLGYDRPSKAVDWLI
16495616Bd	KDRHSKVWTSRG-LRDRRIRLSVPTAIQFYDIQDRLLGVYDQPSKAIWLI
16264256Gm	KDRHSKVCCTAKG-PRDRRVRLAAHTAIQFYDVQDRLLGYDRPSKAVDWLI
16823710Rc	KDRHSKVCCTAKG-PRDRRVRLSAHTAIQFYDVQDRLLGYDRPSKAVDWLI
16288777Gm	KDRHSKVYTAGG-PRDRRVRLSAHTAIQFYDVQDRLLGYDRPSKAVDWLI
18239062Pt	KDRHSKVCCTAKG-PRDRRVRLSAHTAIQFYDVQDRLLGYDRPSKAVDWLI
17362913At	TDRHSKIKTAGG-TRDRRMRLSLDVAKELFGLQDMLGFDKASKTVEWLL
Eg016729	KDRHSKINTAQQ-MRDRRMRLSLEVAAREFFNLQDMLGLDKASKTIKWL
16862301Os	KDRHSKVRTVKG-LRDRRVRLSVPTAIQLYDLQDRLLGLSQPSKVVWLI
16961496Cs	KDRHSKVCCTAKG-PRDRRVRLSAHTAIQFYDVQDRLLGYDRPSKAVDWLI
ZMAC233950	KDRHSKICTAGG-MRDRRMRLSLDVARKFFALQDMLGFDKASKTVQWLL
16311812Gm	KDRHSKVCCTIRG-LRDRRVRLSVPTAIHLYDLQDRLLGLNQPSKVVWLI
ZMAC190734	KDWHKICTAGA-MRDRRMRLSLDVARKFFELQDMLGFDKASKTVQWLI
18175983Si	KDRHSKVKTVKG-LRDRRVRLSVPTAIQLYDLQDRLLGLNQPSKVVWLI
16257826Gm	KDRHSKVCCTIRG-LRDRRIRLSVPTAIQLYNLQDKLGFNQPSKVVWLI
Eg049885	KDRHRKICTAQQ-LRDRRVRLSIEISRFFDLQDMLGFDKASKTLEWLL
Eg014141	KDRHSKVCCTAKG-PRDRRVRLSAHTAIQFYDVQDRLLGYDRPSKAVDWLI
Eg018583	KDRHSKVCCTIKG-LRDRRVRLSVPTAIQLYDLQDRLLGLSQPSKVVWLI
Eg040933	KDRHSKIRTVQGG-LRDRRIRLSVQVSRKFFGLQDMLGFDKASKTIEWLL
Eg015738	KDRHSKIYTARG-PRDRRMRLSLEVAAREFFDLQDMLGFDKASKTVEWLL
Eg014606	KDRHSKVCCTIRG-LRDRRIRLSVPTAIQLYDLQDKLGLSQPSKVIDWLI
16061974Al	KDRHSKINTSKG-PRDRRVRLSVSTALQFYDLQDRLLGYDQPSKAVEWLI
17378847At	KDRHSKVCCTVRG-LRDRRIRLSVPTAIQLYDLQDRLLGLSQPSKVIDWLI
17660534Pp	KERHSKVYTSKG-PRDRRVRLSAPTAIQFYDVQDRLLGYDRPSKAIWLI
18209307Pt	KDRHSKVCCTIRG-LRDRRVRLSVATAIQLYDLQDRLLGLNQPSKVVWLI
16498681Bd	TDRHSKIRTAQG-VRDRRMRLSLDVARDFFALQDQLGFDKASKTVDWLI
17686317Mg	KDRHSKIFTAQG-PRDRRVRLSIGIARKFFDLQEMLGFDKASKTLDWLI
16804611Rc	KDRHSKVYTAGG-PRDRRVRLSAHTAIQFYDVQDRLLGYDRPSKAVDWLI
16877682Os	TDRHSKIRTAQG-VRDRRMRLSVGARDFFALQDKLGFDKASRTVEWLL
17660278Pp	KDRHSKVYTAGG-PRDRRVRLSAHTAIQFYDVQDRLLGYDRPSKAVDWLI
18231968Pt	KDRHSKVWTSKG-LRDRRVRLSVSTAIQFYDLQDRLLGYDQPSKAVEWLI
ZM2G064628	TDRHSKIRTAQG-VRDRRMRLSLDVARDFFALQDRLLGFQDQPSKAVDWLI
16258614Gm	RDRHSKINTARG-LRDRRMRLSLEVAKRFFGLQDMLGFDKASKTVDWLI

TCP
Class I

TCP
Class II

▼

18193228Si	KDRHSKICTAGG-MRDRRMRLSLDVARKFFALQDMLGFDKASKTVQWLL
16973828Cs	KDRHSKVCTAKG-PRDRRVRLSAHTAIQFYDVQDRLLGYDRPSKAVDWLI
18169927Si	KDRHSKVRTVKG-LRDRRVRLSVPTAIQLYDLQDRLLGLSQPSKVVDWLL
16311029Gm	KDRHSKVFTIRG-LRDRRVRLSVPTAIQLYDLQDRLLGLSQPSKVVDWLL
16953760Cs	KDRHSKVWTSKG-LRDRRVRLSVATAIQFYDLQDRLLGFQEQPSKAVEWLI
16265078Gm	KDRHSKVYTSKG-PRDRRVRLSAHTAIEFYDVQDRLLGYDRPSKAVDWLI
16259812Gm	KDRHSKVMTSKG-LRDRRVRLSVTTAIQFYDLQDRLLGYDQPSKAVEWLI
17823706Vv	KDRHSKIYTAQG-PRDRRMRLSLQIARKFFDLQDILGFDKASKTIEWLFI
18225754Pt	KDRHSKVWTSQG-LRDRRVRLSVTTAIQFYDLQDRLLGYDQPSKAVEWLI
17830339Vv	KDRHSKVCTSKG-PRDRRVRLSANTAIFFYDVQDRLLGYDRPSKAVDWLM
16287845Gm	KDRHSKVCTAKG-PRDRRVRLAAHTAIQFYDVQDRLLGYDRPSKAVDWLI
18226839Pt	KDRHSKVCTIRG-LRDRRVRLSVPTAIQLYDLQDRLLGLNQP SKVV DWLL
17676020Mg	KDRHSKVCTAKG-PRDRRVRLAAHTAIQFYDVQDRLLGYDRPSKAVDWLI
16272765Gm	KDRHSKIHTSQG-LRDRRVRLSIEIARKFFDLQDMLGFDKASNTLDWLF
18218990Pt	KDRHSKVYTAGG-PRDRRVRLSAHTAIQFYDVQDRLLGYDRPSKAVDWLI
17838763Vv	KDRHSKVCTVRG-LRDRRVRLSVPTAIQLYDLQDRLLGLNQP SKVV DWLL
18220855Pt	KDRHSKVYTAGG-PRDRRVRLSAHTAIQFYDVQDRLLGYDRPSKAVDWLI
ZM2G020805	KDRHSKVYTAGG-IRDRRVRLSVATAIQFYDLQDRLLGYDQPSKAVEWLI
17664952Pp	KDRHSKVWTSKG-LRDRRVRLSVTTAIQFYDLQDRLLGYDQPSKAVEWLI
16849564Os	KDRHSKISTAGG-MRDRRMRLSLDVARKFFALQDMLGFDKASKTVQWLL
16807331Rc	KDRHSKIYTAQG-PRDRRMRLSLQIARKFFDLQDMLGFDKASKTIDWLF
ZM2G166687	TDRHSKIRTAQG-VRDRRMRLSVGVAR EFFALQDRLLGFDKASKTVNWLL
17692947Mg	RDRHSKIDTAQG-PRDRRVRLSIGVARKFFDLQEMLGFDKPSKTLDWLL
18233253Pt	KDRHSKINTAQQ-PRDRRVRLSLKVAR EFFDLQDKLRFDKASKTVEWLL
16270643Gm	KDRHSKVMTSKG-LRDRRVRLSVNTAIQFYDLQDRLLGYDQPSKAVEWLI
17641009Pp	KDRHSKVSTVRG-LRDRRIRLSVPTAIQLYDLQDRLLGLSQPSKVIDWLL
17360709At	KDRHSKVCTLRG-LRDRRVRLSVPTAIQLYDLQERLGLVQDQPSKAVDWLL
17820873Vv	RDRHSKINTARG-PRDRRMRLSLEIARKFFDLQDMLGFDKASKTVEWLL
16483278Bd	KDRHSKVRTVKG-LRDRRVRLSVPTAIQLYDLQDRLLGLSQPSKVV DWLL
16291962Gm	KDRHSKVMTSKG-LRDRRVRLSVTTAIQFYDLQDRLLGYDQPSKAVEWLI
17825262Vv	KDRHSKVCTAKG-PRDRRVRLSAHTAIQFYDVQDRLLGYDRPSKAVDWLI
18140802Ac	KDRHSKVCTAKG-PRDRRVRLSAHTAIQFYDVQDRLLGYDRPSKAVDWLI
16968642Cs	RDRHSKINTLHG-PRDRRMRLSLPVAK EFFGLQDMLGVDKASKTVEWLL
16311152Gm	KDRHSKIHTSQG-LRDRRVRLSIEIARKFFDLQDMLGFDKASNTLDWLF
17362435At	KDRHSKVCTAKG-PRDRRVRLSAHTAIQFYDVQDRLLGFDRPSKAVDWLI
16263902Gm	RDRHSKINTARG-LRDRRMRLSLEVARKFFGLQDMLNFDKASKTVEWLL
18232641Pt	KDRHSKVCTVRG-LRDRRIRLSVPTAIQLYDLQDRLLGLSQPSKVIDWLL
17687507Mg	KDRHSKICTAQQ-IRDRRMRLSLHVARKFFDLQD TLGYDKASQTIEWLFI
17690687Mg	KDKHSKVSTARG-PRDRRLRLSPITAIQFYDVQDRLLGYDRPSKAIDWLI
ZM2G089361	KDRHSKVYTAGG-IRDRRVRLSVPTAIQFYDLQDRLLGFQDQPSKAVEWLI
18209353Pt	KDRHSKIYTAQG-LRDRRVRLSIEIARKFFDLQEMLGFDKASKTLDWLL
16486650Bd	KDRHSKVKTIVKG-LRDRRVRLSVPTAIQLYDLQDRLLGLNQP SKVV DWLL
16272606Gm	KDRHSKVCTIRG-LRDRRVRLSVPTAIQLYDLQDRLLGLSQPSKVV DWLL
16289957Gm	KDRHSKIYTSQG-LRDRRVRLSIEIARKFFDLQDMLGFDKASNTLDWLF
16312005Gm	KDRHSKIYTSQG-LRDRRVRLSIAIARKFFDLQDMLGFDKASNTLEWLF
16850380Os	KDRHSKVYTAGG-IRDRRVRLSVATAIQFYDLQDRLLGFQDQPSKAVEWLI
17671707Mg	KDRHSKVLTSKG-LRDRRVRLSVNTAIQFYDLQDRLLGYDQPSKAVEWLI
16305405Gm	RDRHSKINTARG-LRDRRMRLSLEVARKFFGLQDMLGFDKASKTVEWLL
16292624Gm	KDRHSKVCTAKG-PRDRRVRLSAHTAIQFYDVQDRLLGYDRPSKAVDWLI
16820989Rc	KHRHSKICTAQQ-LRDRRVRLSIEIARKFFDLQD LLGFDKASKTLEWLL
18159907Ac	KDRHSKVCTIRG-LRDRRVRLSVPTAIQLYDLQDRLLGLNQP SKVV DWLL
ZM2G166946	KDRHSKVKTIVKG-LRDRRVRLSVPTAIQLYDLQDRLLGLNQP SKVV DWLL
17691503Mg	KDKHSKVCTASGTTDRRLRLSPKTAIQFYDVQDRLLGYDRPSKAVDWLM
17353720At	RDRHSKICTAQQ-PRDRRMRLSLQIARKFFDLQDMLGFDKASKTIEWLFI
17972262Me	KDRHSKVWTSKG-LRDRRVRLSVNTAIQFYDLQDRLLGYDQPSKAVEWLI
1955624Sb	KDRHSKVYTAGG-IRDRRVRLSVATAIQFYDLQDRLLGYDQPSKAVEWLI
17960265Me	RDRHSKIYTAQG-PRDRRMRLSLKVAR EFFDLQDKLCFDKASKTVEWLL
1950026Sb	KDRHSKVYTAGG-IRDRRVRLSVPTAIQFYDLQDRLLGFQDQPSKAVEWLI
17981115Me	KDRHSKVYTSKG-PRDRRVRLSAHTAIQFYDVQDRLLGYDRPSKAVDWLI
17987200Me	KDRHSKVCTAKG-PRDRRVRLSAHTAIQFYDVQDRLLGYDRPSKAVDWLI
1981475Sb	KDRHSKVRTVKG-LRDRRVRLSVPTAIQLYDLQDRLLGLSQPSKVV DWLL
1963332Sb	KDRHSKVCTARG-LRDRRVRLAAHTAIRFYDVQDRLLGYDRPSKAVDWLI
17684730Mg	KDRHSKVCTVKG-LRDRRVRLSVPTAIQLYDLQERLGLNQP SKVV DWLL
17820778Vv	KDRHSKVCTVRG-LRDRRIRLSVPTAIQLYDLQDRLLGLSQPSKVV DWLL
1976099Sb	TDRHSKIRTAQG-VRDRRMRLSVGVAR EFFALQDRLLGFDKASKTVNWLL
16044941Al	KDRHSKVCTVRG-LRDRRIRLSVMTAIQLYDLQERLGLSQPSKVIDWLL
17968936Me	KDRHSKIHTAQQ-PRDRRMRLSVQIARKFFNLQDMLGFDKASKTIDWLF
1963385Sb	KDRHSKVKTIVKG-LRDRRVRLSVPTAIQLYDLQDRLLGLNQP SKVV DWLL
16041875Al	KDRHSKIHTAQQ-LRDRRVRLSIGIARQFFDLQDMLGFDKASKTLEWLL
1950625Sb	KDRHSKICTAGG-MRDRRMRLSLDVARKFFALQDMLGFDKASKTVQWLL
17962796Me	KDRHSKVSTVRG-LRDRRIRLSVHTALQLYDLQDRLLGLSQPSKVIDWLL
17695167Mg	KDRHSKIETARG-PRDRRMRLSLEVARKFFDLQD LLGYDKASRTVEWLL
897773Al	KDRHSKVCTAKG-PRDRRVRLSAHTAIQFYDVQDRLLGFDRPSKAVDWLI
1979098Sb	KDRHSKVVTARG-LRDRRVRLSVPTAIQFYDIQDRLLGVQDQPSKAVEWLI
902126Al	KDRHSKVFTSKG-PRDRRVRLSAHTAIQFYDVQDRLLGYDRPSKAVDWLI
16047865Al	KDRHSKVLTSKG-LRDRRIRLSVATAIQFYDLQDRLLGFQDQPSKAVEWLI
16055448Al	RDRHSKICTAQQ-PRDRRMRLSLQIARKFFDLQDMLGFDKASKTIEWLFI
1957550Sb	TDRHSKIRTAQG-VRDRRMRLSLDVARDFFALQDRLLGFDKASKTVDWLL
898223Al	TDRHSKIKTAGG-TRDRRMRLSLDVAKELFGLDMLGFDKASKTVEWLL

TCP Class II

▼

1960224Sb	KDRHSKVCTARG-PRDRRVRLSAHTAIQFYDVQDRLG YDRPSKAVDWL I
18039912Ph	KDRHSKVNTAKG-PRDRRVRLSVPTAVQFYDVQDRLGFDQPSKAVEWL I
18041192Ph	KDRHSKVNTAKG-PRDRRVRLSVPTAVQFYDVQDRLGFDQPSKAVEWL I
17987558Me	KDRHSKIYTAQG-LRDRRVRLSIEIARKFFDLQDMLG YDKASKTLEWLL
17830615Vv	KDRHSKVLTSKG-LRDRRVRLSVTTAIQFYDLQDRLG YDQPSKAVEWL I
17372999At	KDRHSKVCTVRG-LRDRRIRLSVMTAIQVYDLQERLGLSQPSKVIDWLL
16819325Rc	KDRHSKVCTIRG-LRDRRIRLSVPTAIQLYDLQDRLG LGSQPSKVIDWLL
16057730Al	KDRHSKVCTLRG-LRDRRVRLSVPTAIQLYDLQERLGV DQPSKAVDWLL
16869526Os	KDRHSKVYTAGG-IRDRRVRLSVSTAIQFYDLQDRLG YDQPSKAVEWL I
ZM2G120151	KDRHSKVRTVKG-LRDRRVRLSVPTAIQLYDLQDRLG LGSQPSKVV DWLL
18230603Pt	KDRHSKVCTAKG-PRDRRVRLSAHTAIQFYDVQDRLG YDRPSKAVDWL I
16805939Rc	KDRHSKVWTSKG-LRDRRVRLSVTTAIQFYDLQDRLG YDQPSKAVEWL I
17351927At	KDRHSKVCTAKG-PRDRRVRLSAPTAIQFYDVQDRLG FDRPSKAVDWL I
16492304Bd	TDRHSKIRTAQG-VRDRRMRLSVGVARDFFDLQD LLGFDKASNTVDWLL
18176917Si	KDRHSKVCTARG-PRDRRVRLSAHTAIQFYDVQDRLG YDRPSKAVDWL I
17697396Mg	KDRHSKVCTVRG-LRDRRVRLSVPTAIQLYDLQDRLG LGLNQP SKVIDWLL
17369179At	KDRHSKVLTSKG-PRDRRVRLSVSTALQFYDLQDRLG YDQPSKAVEWL I
17829974Vv	KDRHSKVYTAGG-PRDRRVRLSAHTAIQFYDVQDRLG YDRPSKAVDWL I
16486585Bd	KDRHSKVCTARG-LRDRRVRLAAHTAIRFYDVQDRLG YDRPSKAVDWL I
17693093Mg	KDRHSKVCTAKG-PRDRRVRLSAPTAIQFYDVQDRLG YDRPSKAVDWL I
17687164Mg	KDRHSKIRTAQG-IRDRRMRLSLQAARKFFDLQD LLLGFDKASKTIEWLF
17664732Pp	KDRHSKIFTAQG-LRDRRVRLSINVARQFFDLQD LLLGFDKASKTLEWLL
16287440Gm	KDRHSKVYTSKG-PRDRRVRLSAHTAIEFYDVQDRLG YDRPSKAVDWL I
16061733Al	KDRHSKVCTVRG-LRDRRIRLSVPTAIQLYDLQDRLG LGSQPSKVIDWLL
17841387Vv	KDRHSKITTAKG-PRERRVRLSIIARKFFDLQDMLG FDKASRTLEWLL
16281483Gm	KDRHSKIHTSQG-LRDRRVRLSSEIARKFFDLQDML EFDKPSNTLEWLF
16060581Al	KDRHSKVCTAKG-PRDRRVRLSAPTAIQFYDVQDRLG FDRPSKAVDWL I
18230206Pt	RDRHSKINTAQG-PRDRRMRLSLKVAR EFDLQDKLRFDKASKTVEWLL
17350301At	KDRHSKVLTSKG-LRDRRIRLSVATAIQFYDLQDRLG FFDQPSKAVEWL I
18240586Pt	KDRHSKIHTAQG-PRDRRMRLSLQIARKFFDLQDMLG FDKASKTIEWLF
16256517Gm	KDRHSKVCTIRG-LRDRRIRLSVPTAIQLYDLQDKL GLSQPSKVIDWLL
18188805Si	KDRHSKVVTARG-LRDRRVRLSVPTAIQFYDIQDRLG V DQPSKAVEWL I
17446280Mt	KDRHSKVYTAGG-PRDRRVRLSAHTAIQFYDVQDRLG YDRPSKAVDWL I
16835080Os	KDRHSKVKTVKG-LRDRRVRLSVPTAIQLYDLQDRLG LGLNQP SKVIDWLL
18184307Si	TDRHSKIRTAQG-VRDRRMRLSLDVARDFFDLQDRLG FFDKASKTVDWLL
17666782Pp	KDRHSKIYTAQG-PRDRRMRLSLQIARKFFDLQDMLG FFDKASKTIEWLF
16881524Os	TDRHSKIRTAQG-VRDRRMRLSLDVARDFFDLQDRLG FFDKASKTVDWLL
16292871Gm	KDRHSKVYTAGG-PRDRRVRLSAHTAIQFYDVQDRLG YDRPSKAVDWL I
16289009Gm	KDRHSKVCTAKG-PRDRRVRLSAHTAIQFYDVQDRLG YDRPSKAVDWL I
16304900Gm	KDRHSKVCTIRG-LRDRRIRLSVPTAIELYDLQEK LGLNQP SKVIDWLL
17655443Pp	RDRHSKINTARG-LRDRRMRLSLEVARKFFWLQD ALHFDDKASKTVEWLL
18185750Si	TDRHSKIRTAQG-VRDRRMRLSVGVAR EFDLQDRLG FFDKASKTVNWLL
17641148Pp	KDRHSKVCTVKG-LRDRRVRLSVPTAIQLYDLQERL G LGLNQP SKVIDWLL
18160118Ac	KDRHSKIVTAQG-TRDRRMRLSLEIARKFFDLQD ILGFDKASKTVEWLL
18163166Ac	--RHSKVLTAQG-LRDRRVRLSVSTAIQFYDLQDRLG YDQPSKAVEWL I
18182019Si	-----KG-IRDRRVRLSVATAIQFYDLQDRLG YDQPSKAVEWL I
18196462Si	KDRHSKVYTAGG-IRDRRVRLSVPTAIQFYDLQDRLG FFDQPSKAVEWL I
18162118Ac	KDRHKTIVTAQG-PRDRRMRLSLDIARRFFMVQDMLG FFDKASKTVEWLL

TCP Class II