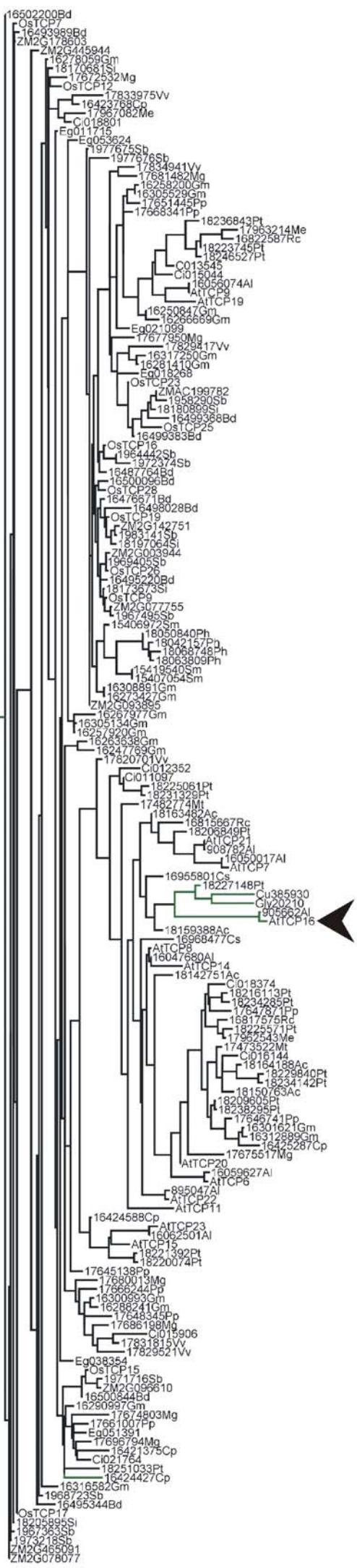




100
TCP
Class I



Supplemental Fig. 6. Rooted Maximum Likelihood tree of TCP genes in Land Plants showing the evolution of the second position of codon 11 of the class I TCP domain or the equivalent codon 15 of the class II domain. Green branches indicate gain of adenine, and black branches represent gain of guanine. Numbers on branches are likelihood bootstrap support values (>80). The black arrowhead indicates the position of *AtTCP16*. Gene names and identifiers of selected sequences are presented in supplemental Table 2. CIN (CINCINNATA) and CYC/TB1 (CYCLOIDEA/TEOSINTE BRANCHED1) indicate the respective clades in which class II proteins can be subdivided, according to Martin-Trillo and Cubas (1).