

Supplementary figure 4:

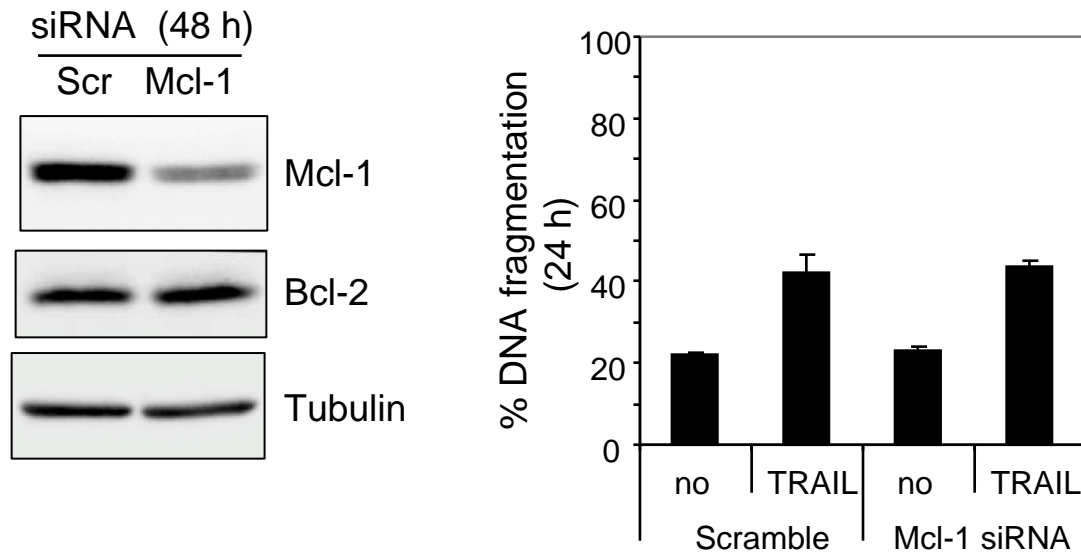


Fig. S4. Decrease in Mcl-1 expression has no effect on sensitization to TRAIL-mediated cell death.

MT-2 cells were transfected with either the Mcl-1 specific siRNA or a scramble siRNA. After 48 h recovery, cells were split. One set of cells was subjected to Western blot for controlling the knockdown efficacy and another set of cells were further cultured in the absence or presence of TRAIL. Apoptotic cell death was determined after 24 h TRAIL treatment. Data are representative of two independent knockdown experiments.