

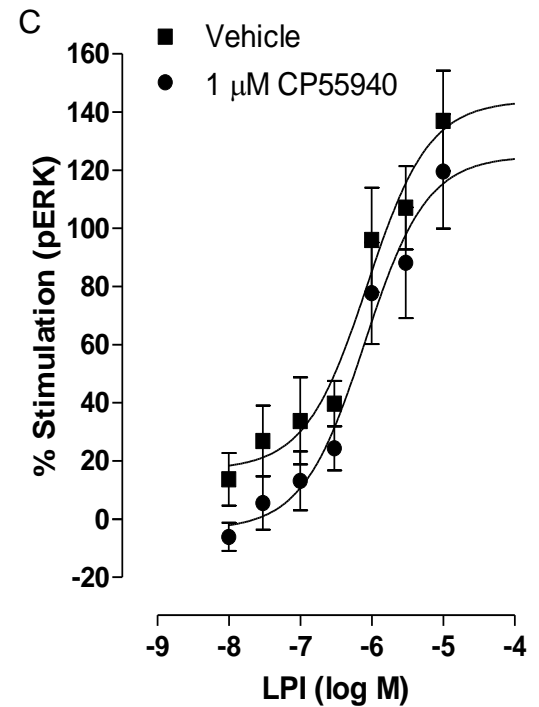
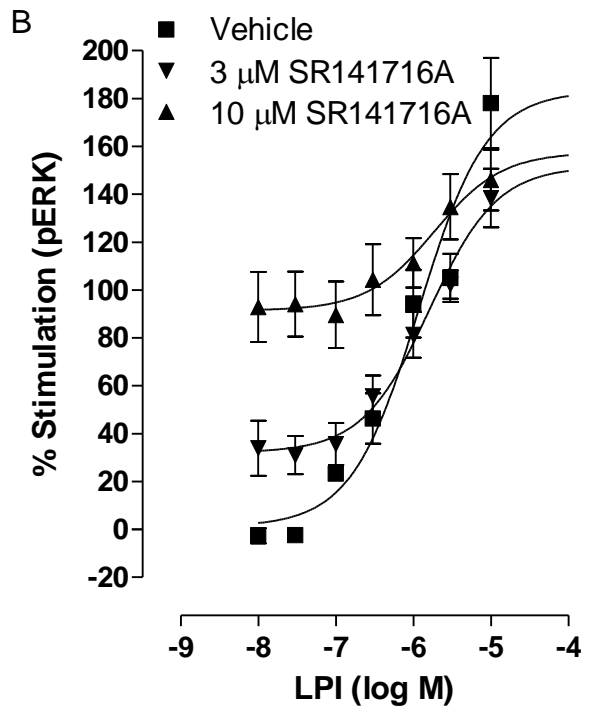
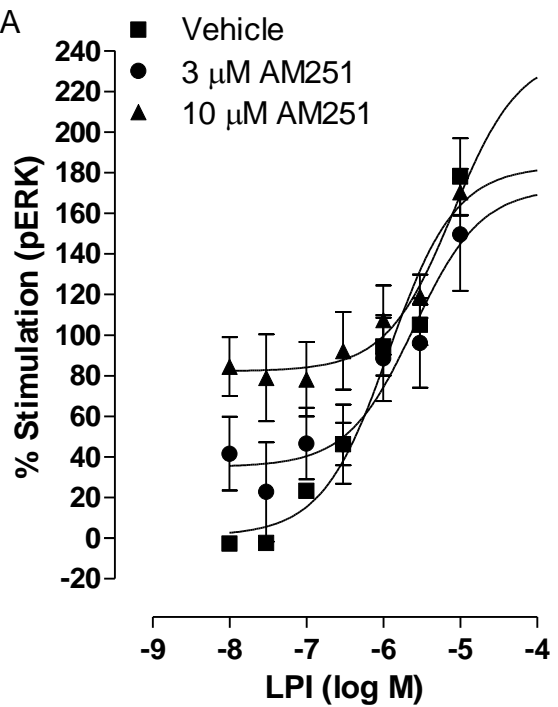
## Supplementary figure 1

**Effect of high concentrations of AM251 and SR141716A arylpyrazoles on LPI-induced ERK1/2 phosphorylation in hGPR55-HEK293 cells.** (A) The effect of 3  $\mu$ M and 10  $\mu$ M AM251 (n=3 each in duplicate). (B) The effect of 3  $\mu$ M and 10  $\mu$ M SR141716A (n=3 each in duplicate). (C) 1  $\mu$ M CP55940, a non-selective cannabinoid, did not produce a significant inhibition of the response (n=4 each in triplicate). Each symbol represents the mean percentage change in bound phosphorylated ERK1/2  $\pm$  SEM over the basal level.

## Supplementary figure 2

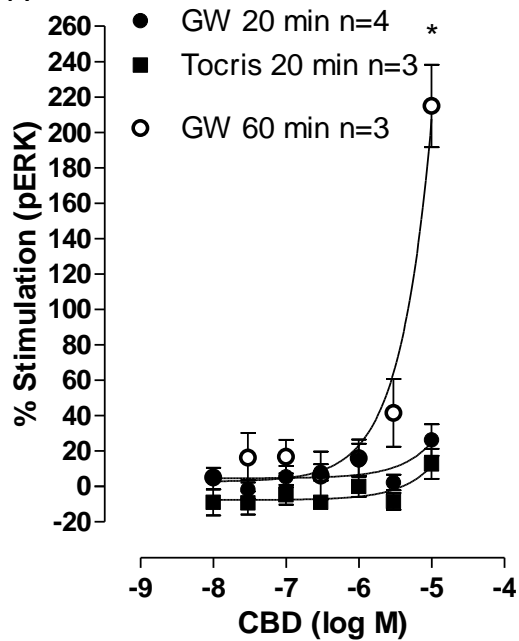
**Effect of CBD and CBG analogues on ERK1/2 phosphorylation in hGPR55-HEK293 cells.** Mean log concentration-response curves of ERK1/2 phosphorylation after 20 min or 60 min stimulation at 37°C by (A) CBD obtained from Tocris or GW Pharmaceuticals (B) CBDA (C) CBDV (D) CBG (E) CBGA (F) CBGV. Each symbol represents the mean percentage change in bound phosphorylated ERK1/2  $\pm$  SEM over the basal level.

Supplementary figure 1

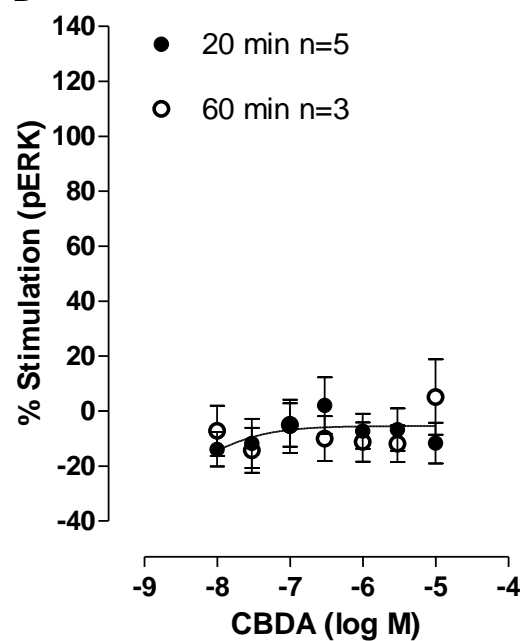


# Supplementary figure 2

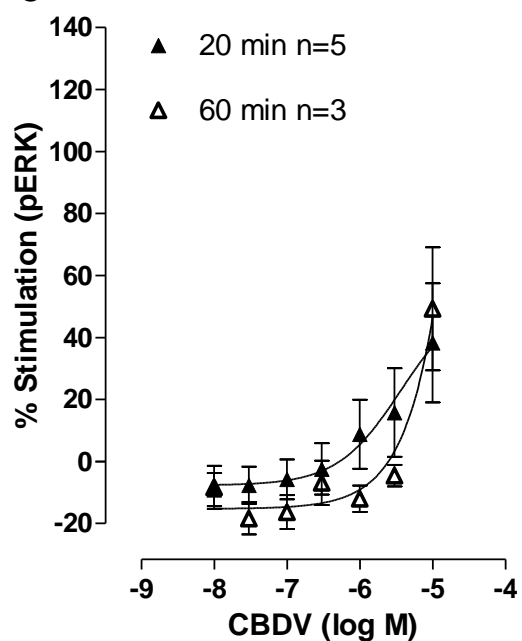
**A**



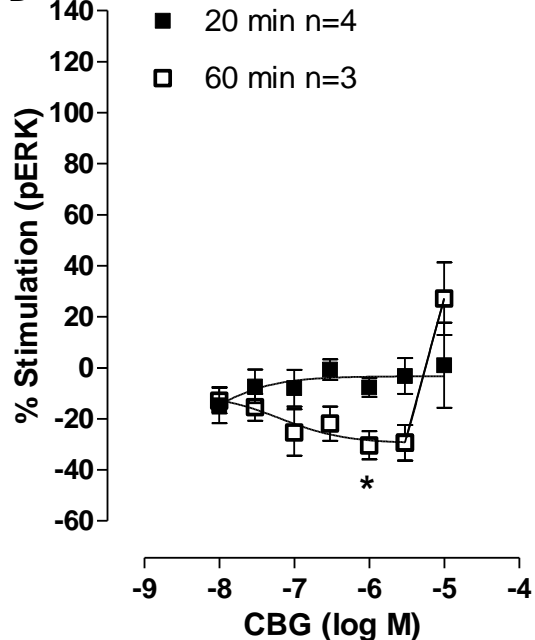
**B**



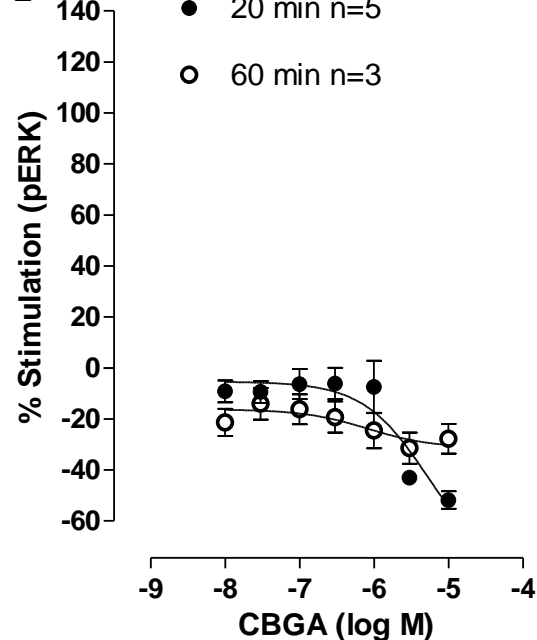
**C**



**D**



**E**



**F**

