

Supplemental Figures Legends

Figure S1 Phenotype of Neu and G-MDSC

Casein-induced peritoneal exudates from C57BL/6 naïve mice and splenocytes from EL4 tumor bearing mice were stained with various antibodies. CD11b⁺Ly6G⁺Ly6C^{high} cells were gated as Neu and G-MDSC. Intracellular PTX3, S100A8, S100A9 and surface GB3.1 and Ly6C were analyzed within populations of Neu and G-MDSC using flow cytometry. Typical example of three performed experiments is shown.

Figure S2. Phenotype of Neu and MDSC

Cells isolated from indicated tissue compartments were stained with different antibodies. CD11b⁺Ly6G⁺Ly6C^{high} cells were gated as Neu and G-MDSC. The proportion of CD244 (A) and CD115 (B) cells within that gated population was measured. Typical example of multiple experiments performed is shown. Per. Cav. – cells isolated from peritoneal exudates after mobilization with casein.

Figure S3 The level of proteasomes and endosomes in Neu and G-MDSC

Neu from naïve mice or G-MDSC from tumor bearing mice were purified using microbeads. Cells were stained for PSMA5, or EEA1-specific antibodies (red) and counterstained with DAPI (blue). The fluorescence intensity was quantified in 50 cells per slide. Three experiments with similar results were performed. ** ($p < 0.01$) * ($p < 0.05$) – statistically significant differences between G-MDSC and Neu. Bar = 10 μ m

Figure S4 Changes in LAMP2 level in G-MDSC during culture

G-MDSC from splenocytes of EL4 tumor-bearing mice were cultured with GM-CSF *in vitro* for indicated time and cells were stained for LAMP2. Typical example of staining is shown (Mag x 630). Scale bar = 10 μ m.

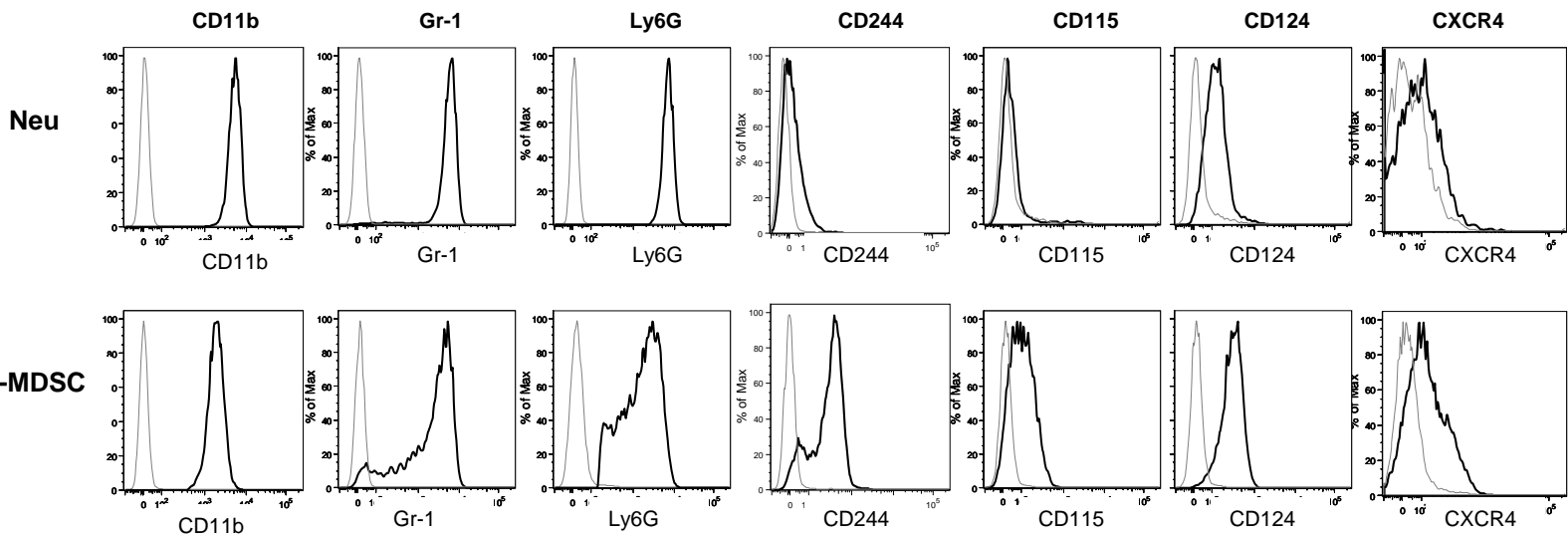
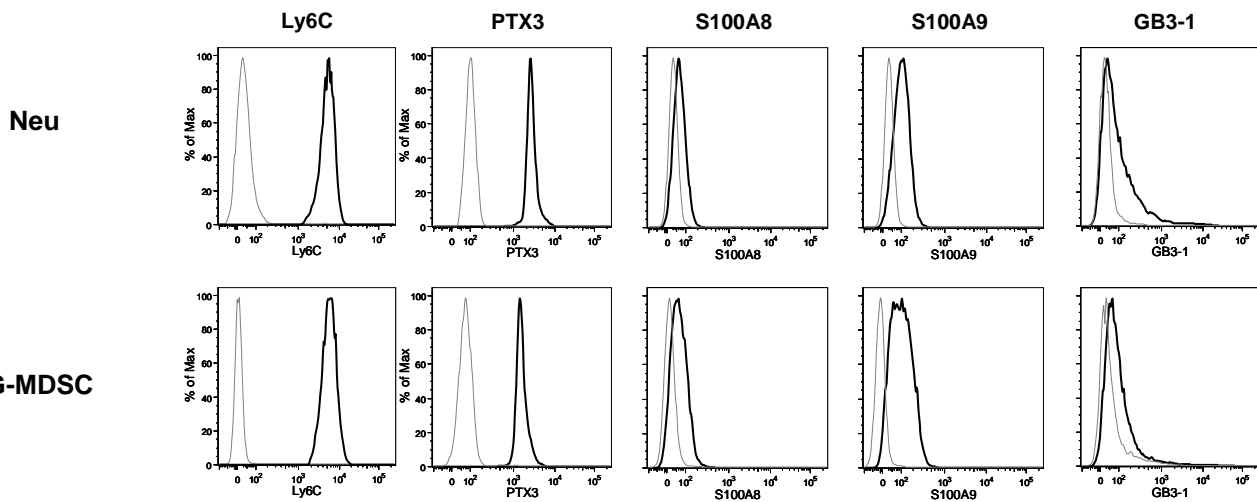


Figure S1

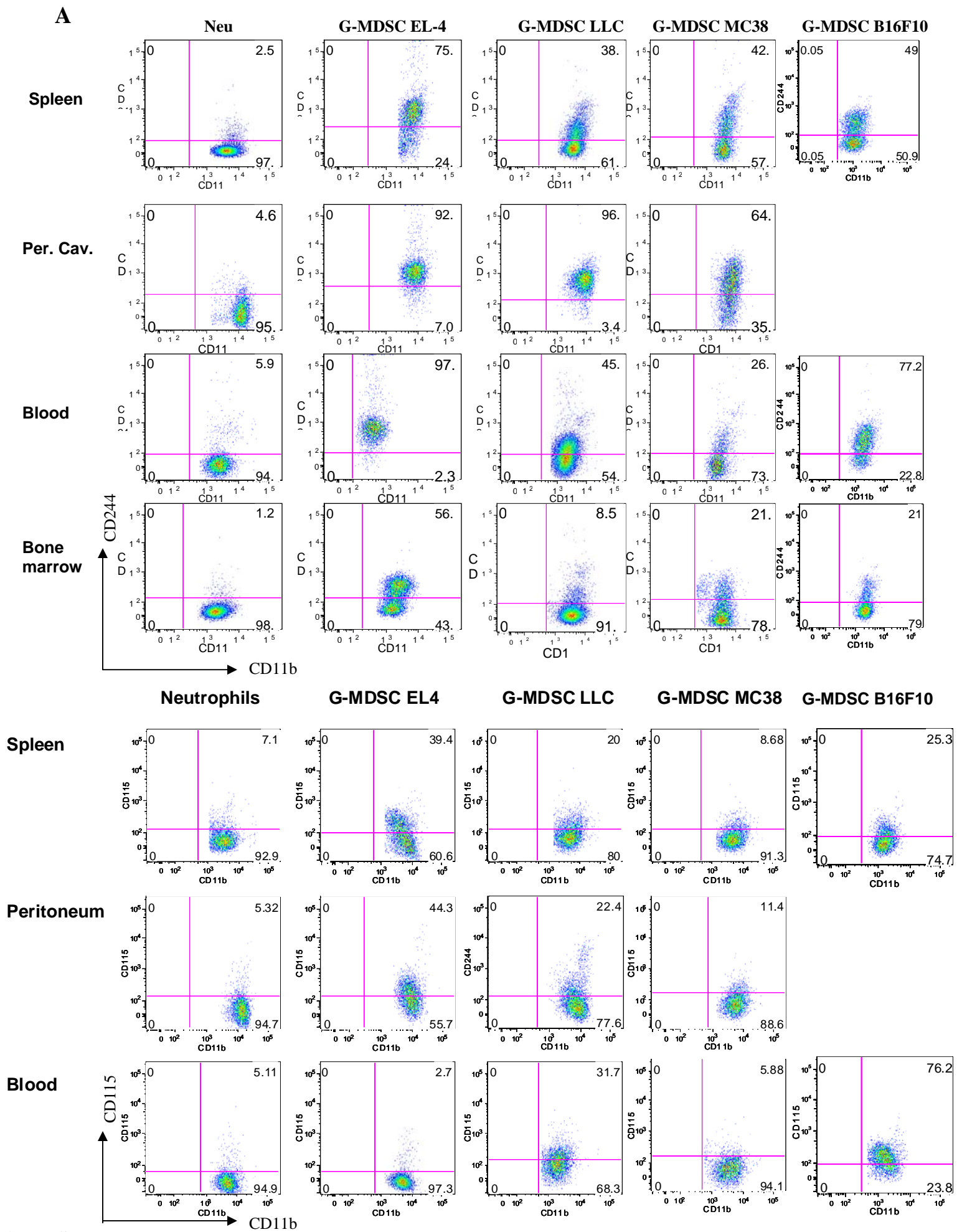


Figure S2

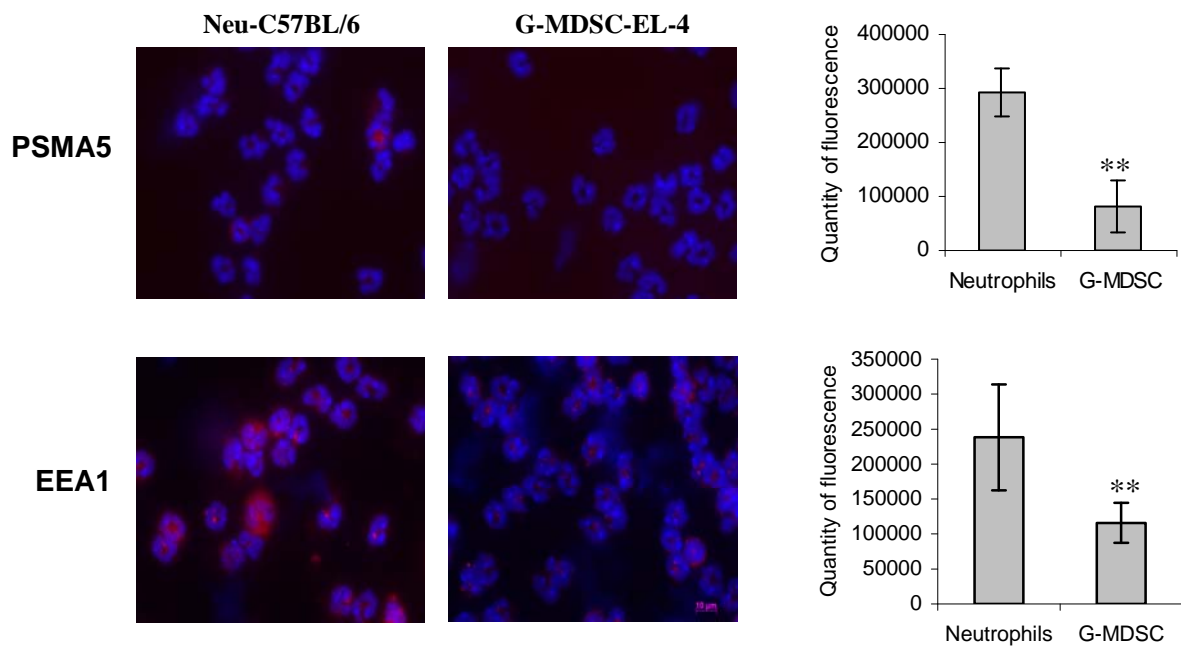


Figure S3 The level of proteasomes and endosomes in Neu and G-MDSC

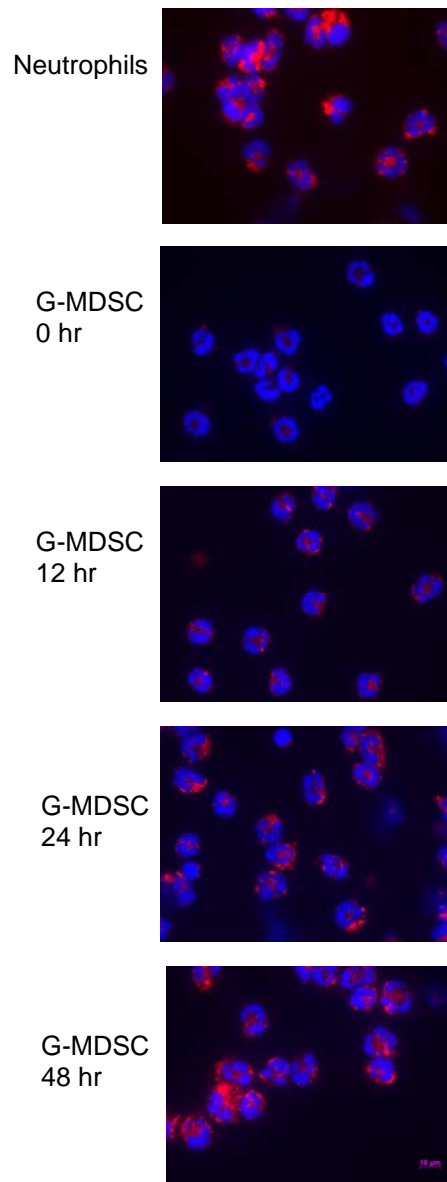


Figure S4 Changes in LAMP2 level in G-MDSC during culture