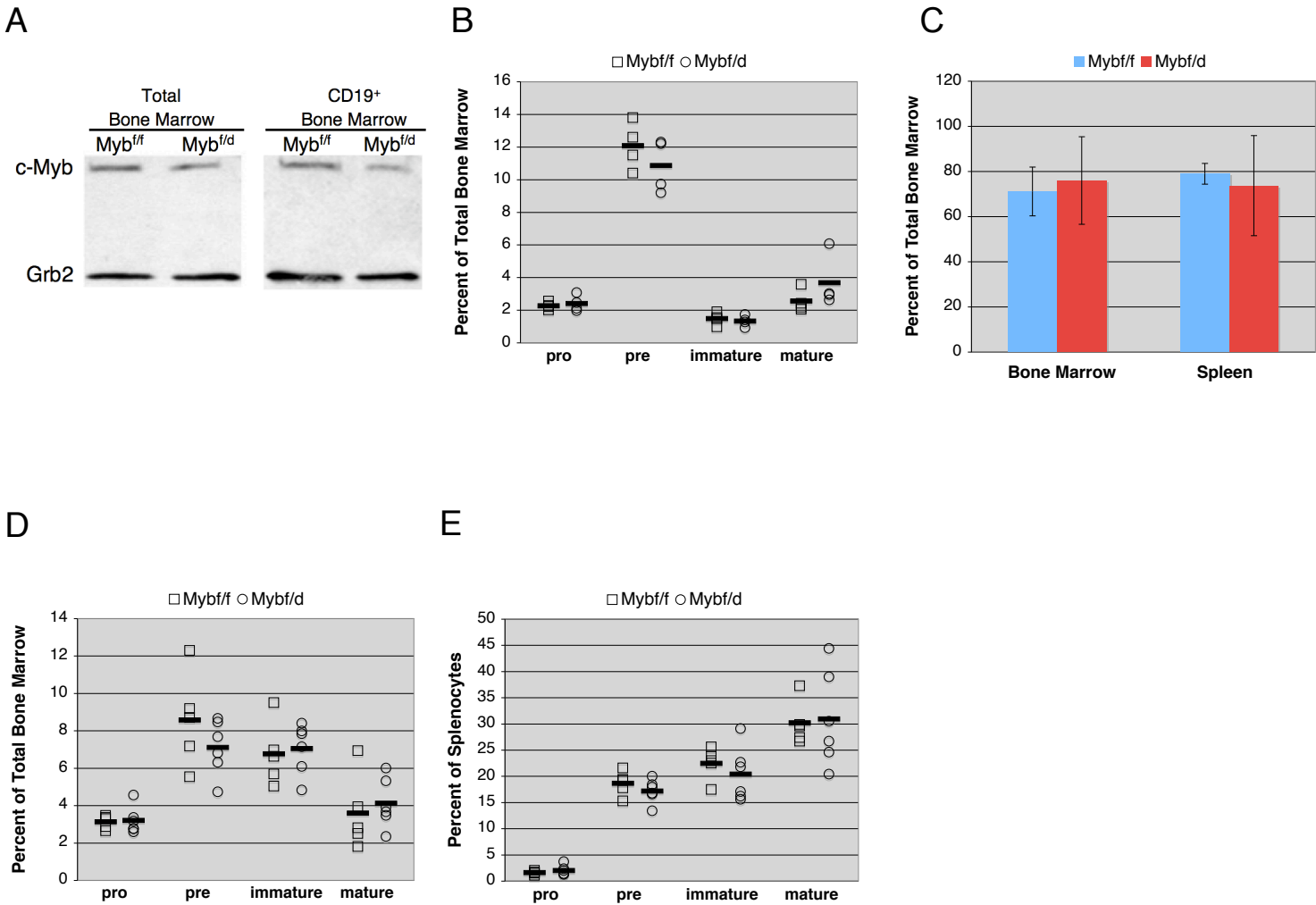
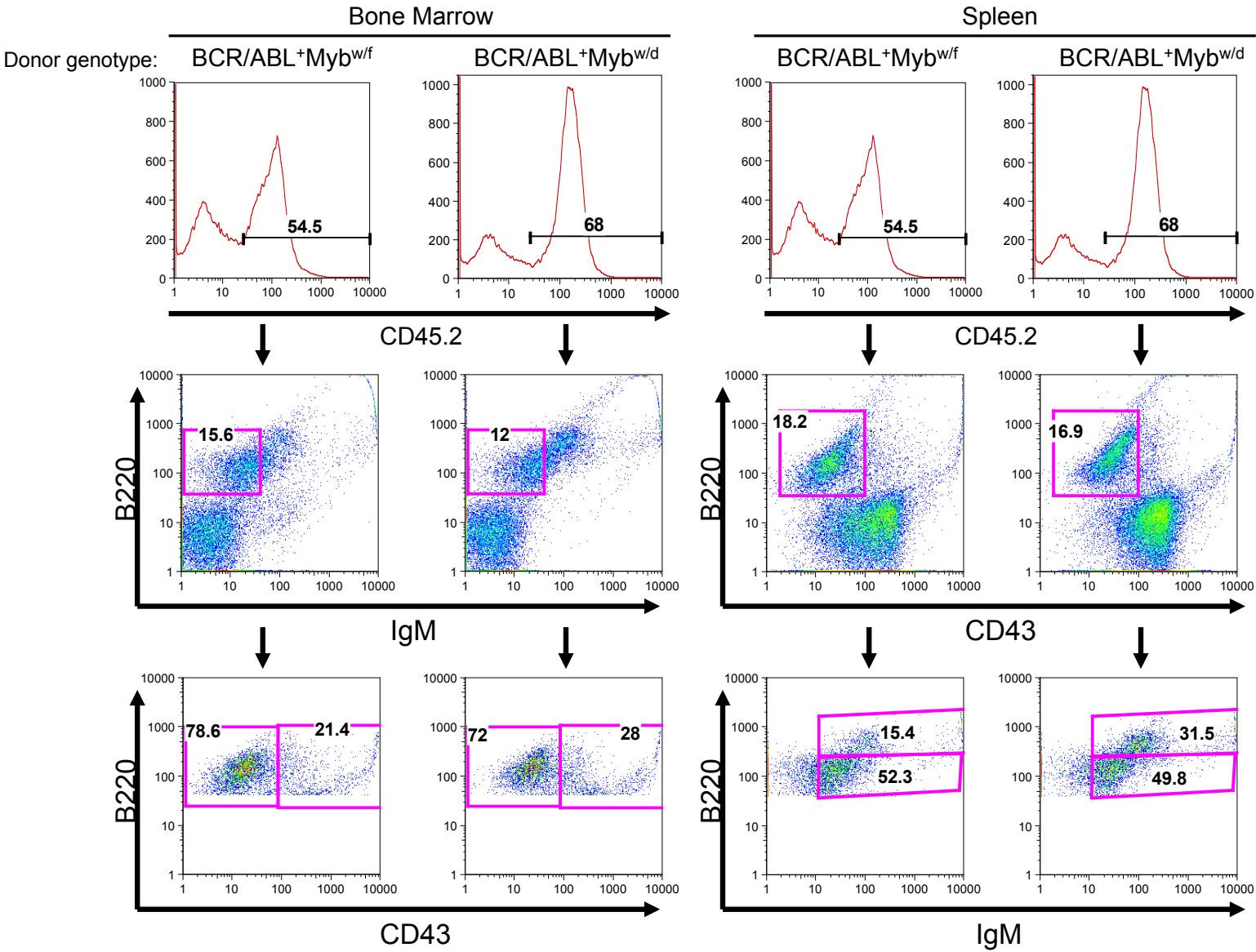


# Supplementary Figure 1

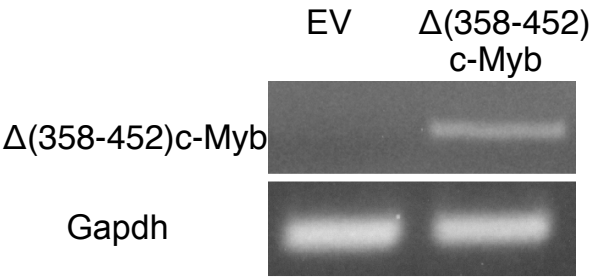


# Supplementary Figure 2

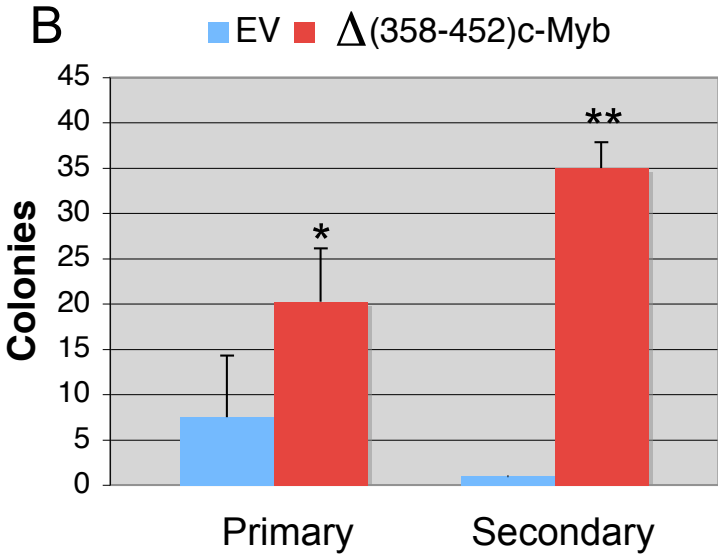


# Supplementary Figure 3

A

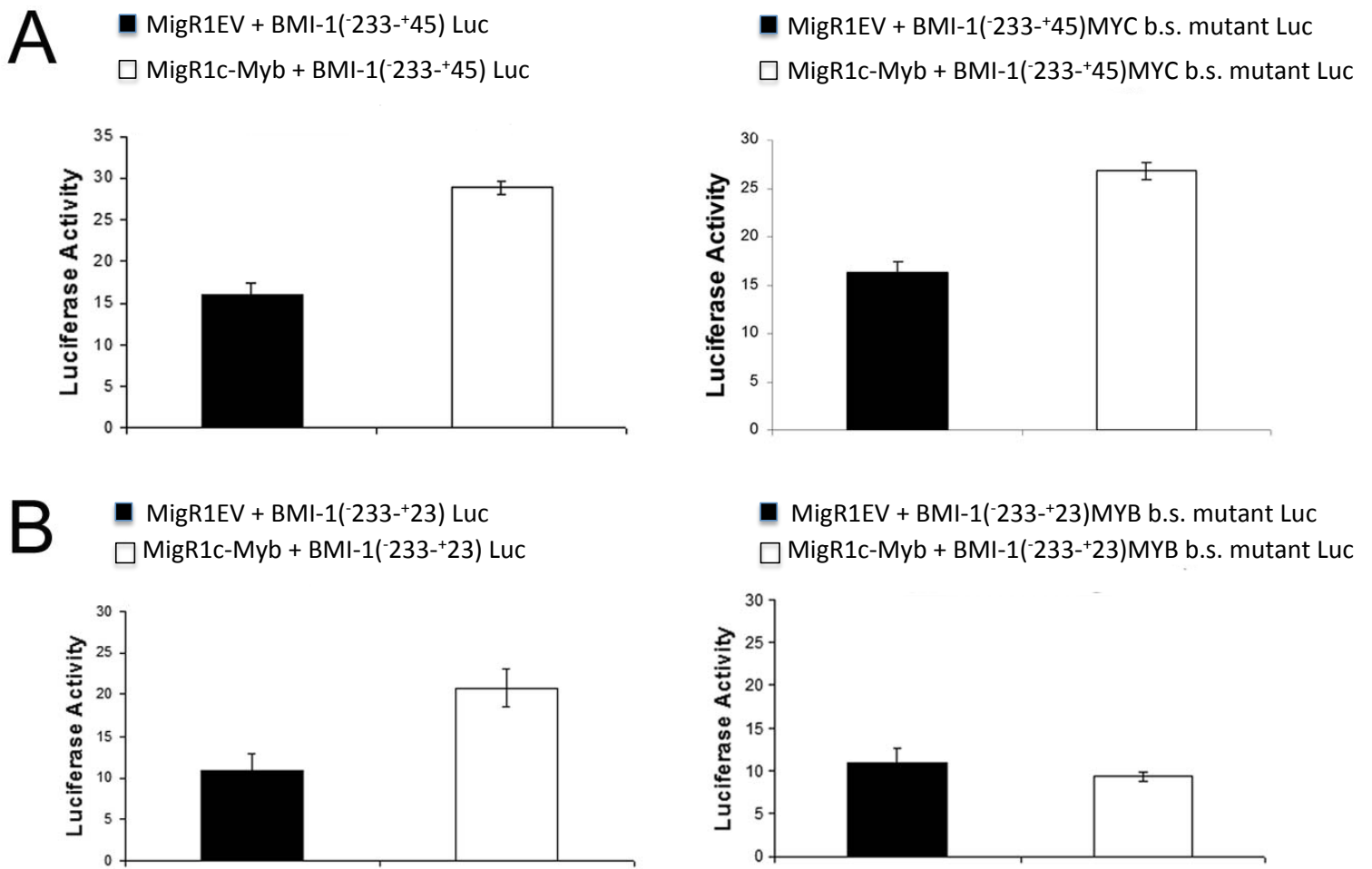


B

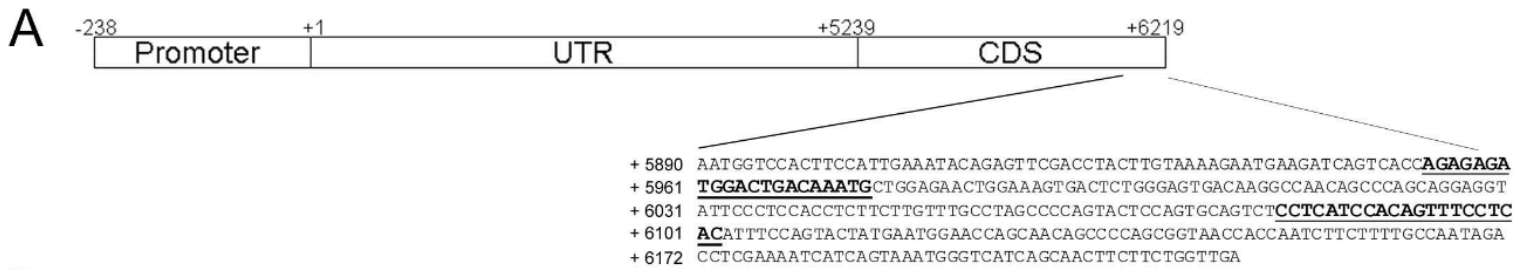




# Supplementary Figure 5



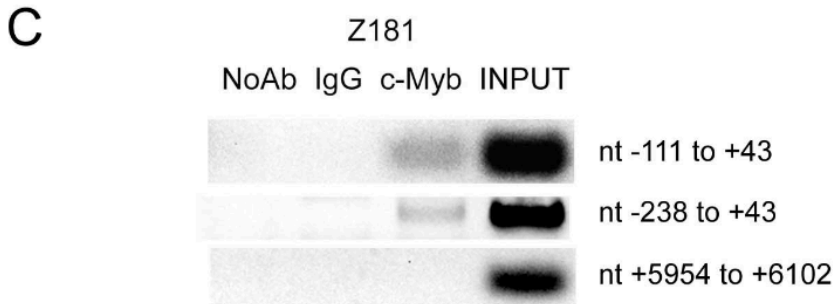
# Supplementary Figure 6



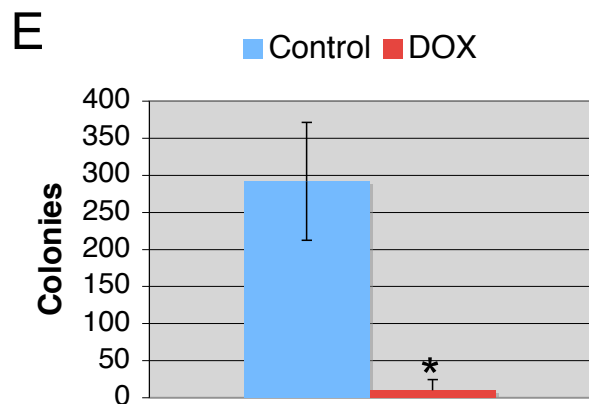
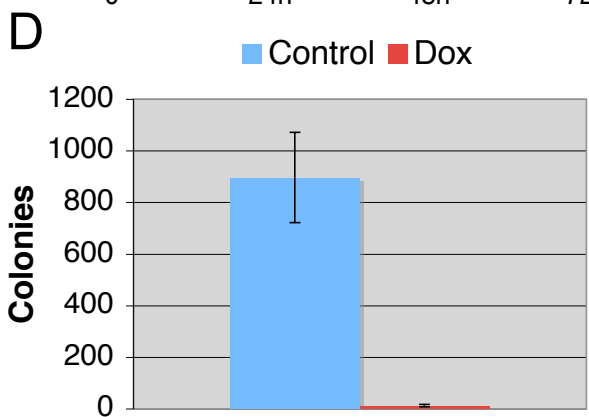
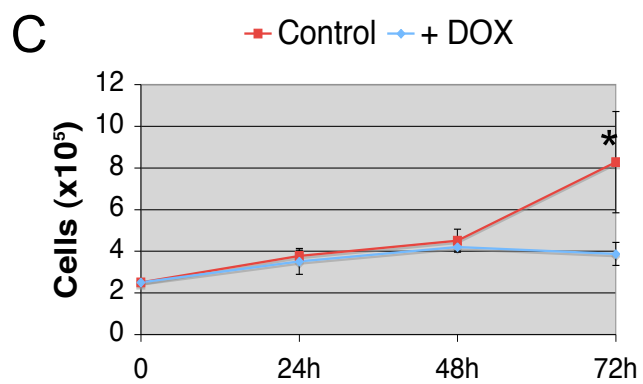
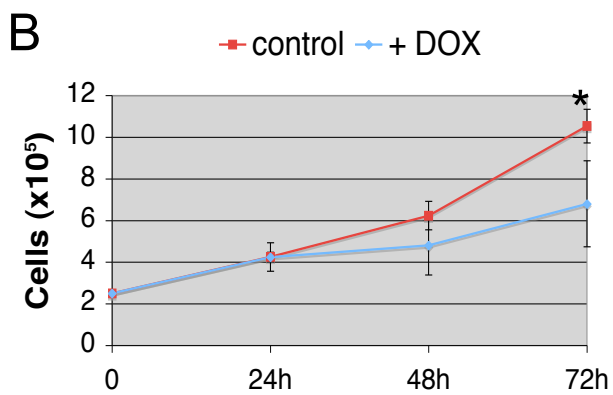
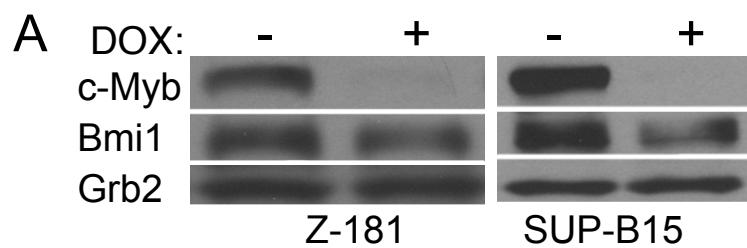
**B**

```

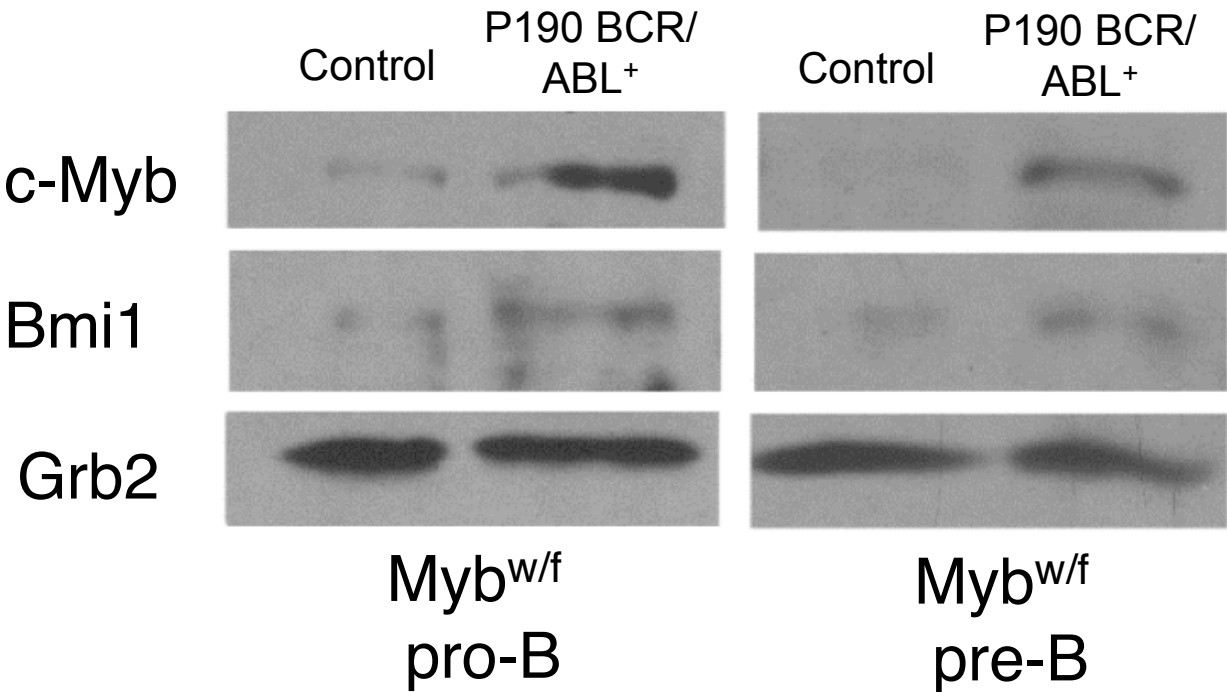
-238
ACGGGCCTGACTACACCGGACTAATTCCCAGGCCGCCCTTAAGGAATGAGGGGAGCAC
GTGACCCGCTGGGGGGGCGCGGGGGGAGGGGGCGGGCGGACTC CGAGCCATTTTGA
-111
GCCGGTGTCA GTTTCCACTCTGCCTTCAGCGGTGCATTTTTTTCCACCC TCCCCTCCCCT
CCTCCCCTCCCCCGCTCGCACGCACACACAGGC GCCCCCCGCCCCGCCCTCCCCCA
+1 +43
CAGCAACTATGAAAATAATCGTAGTATGAGAGGCAGAGATCGGG
    
```



# Supplementary Figure 7



Supplementary Figure 8





## Supplementary Table 1

Colony formation of bone marrow pro-/pre-B cells with two copies ( $\text{Myb}^{\text{w/f}}$ ) or one copy of c-Myb ( $\text{Myb}^{\text{w/d}}$ ) in the  $\text{BCR/ABL}^+$  and  $\text{BCR/ABL}^-$  background. Means and standard deviations were calculated from 3 separate experiments conducted in triplicate (n=9 for each).

	<i>BCR/ABL</i> <sup>+</sup>		<i>BCR/ABL</i> <sup>-</sup>	
	$\text{Myb}^{\text{w/f}}$	$\text{Myb}^{\text{w/d}}$	$\text{Myb}^{\text{w/f}}$	$\text{Myb}^{\text{w/d}}$
<b>mean</b>	118	35	39	42
<b>s.d.</b>	78	26	20	30

## Supplementary Table 2

Clinical and biological characteristics of 19 adult Ph<sup>+</sup> Acute Lymphoblastic Leukemia patients.

\* CDKN2A status not available for 2 patients

Variable	n (%)
Total	19
Age (years, median-range)	56 (18-76.0)
Blast (median)	90 (18-76.0)
Gender	
Male	11 (58)
Female	8 (42)
Molecular	
BCR-ABL <sup>+</sup> p210	3 (16)
BCR-ABL <sup>+</sup> p190	16 (84)
BCR-ABL <sup>+</sup> p210 and p190	—
CDKN2A deletion	
Homozygous	2 (12)*
Heterozygous	4 (24)*

## Supplementary Table 3

Primers used in RQ-PCR analysis.

Primer description	Sequence (5' → 3')
<i>C-Myb</i> sense	TCAGGAAACTTCTTCTGCTCACA
<i>C-Myb</i> antisense	AGGTTCCCAGGTACTGCT
<i>BMII</i> sense	TGGAGAAGGAATGGTCCACTTC
<i>BMII</i> antisense	GTGAGGAAACTGTGGATGAGGA
<i>GAPDH</i> sense	CCAATATGATTCCAC CCA TGG C
<i>GAPDH</i> antisense	CTTGATTTTCGAGGGATCTCGC