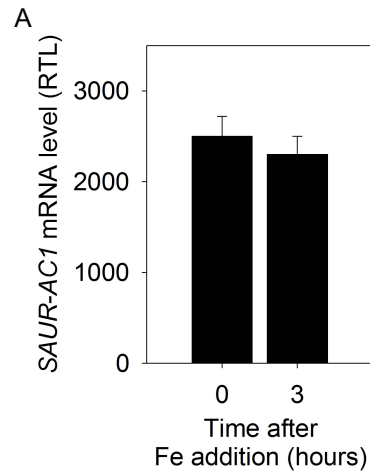


Supplemental Table 1. **Potential DST *cis*-element containing transcripts and their regulation in response to Fe.** AGI number of the transcripts, which contain DST-like *cis*- element in their 3'-UTR, are categorized according to their genetic location. Transcripts regulated by Fe in *Arabidopsis* cells are highlighted in grey.

Supplemental Table 2. **Oligonucleotides used for plasmid construction and quantitative qRT-PCR.** Bases in *italic* show the restriction site incorporated for cloning.

Supplemental Figure 1. ***AtSAUR-AC1* mRNA accumulation and half-life in response to iron treatment.** (A) *Arabidopsis* green cells were collected before (0) and 3 h after treatment with 300 μ M Fe-citrate. Total RNA was extracted and *AtSAUR-AC1* mRNA abundance was determined as described in Figure 1. (B) Determination of *AtSAUR-AC1* relative half-life. Cordycepin was added at each time point mentioned above, and samples were recovered every 30 minutes for 2 hours. *AtSAUR-AC1* mRNA relative half-life was determined as described in the legend to Figure 1. Values and standard errors were obtained from 3 independent experiments.



B

<i>SAUR-AC1</i> mRNA half-life (min)	
control (0h)	109 ± 04
+ Fe (3h)	107 ± 03

Supplemental Figure 1