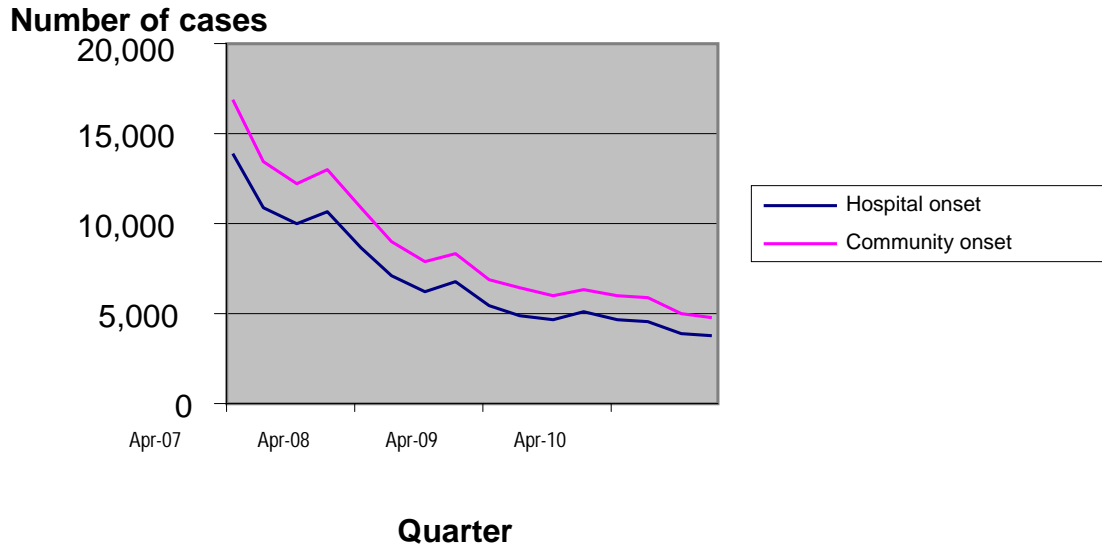


**Appendix 1 (as supplied by authors): Quarterly counts of infection with *Clostridium difficile* among patients aged two years and older (April 2007 to March 2011) in England; Health Protection Agency.<sup>1</sup>**



**Reference**

1. Available: [www.hpa.org.uk/web/HPAwebFile/HPAweb\\_C/1278944233852](http://www.hpa.org.uk/web/HPAwebFile/HPAweb_C/1278944233852); (accessed 2011 Aug. 12).