

## SUPPLEMENTAL DATA

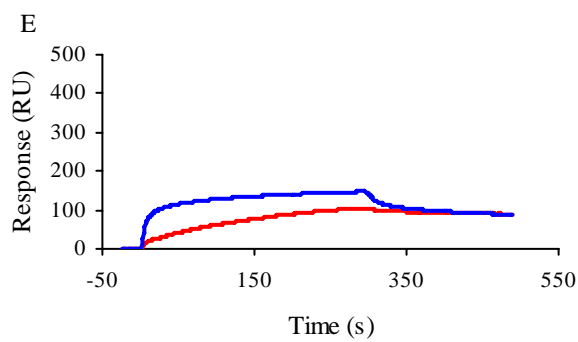
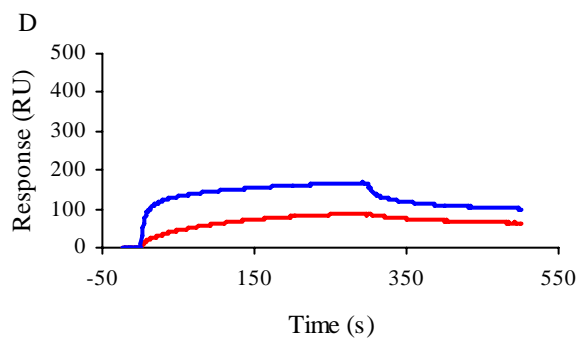
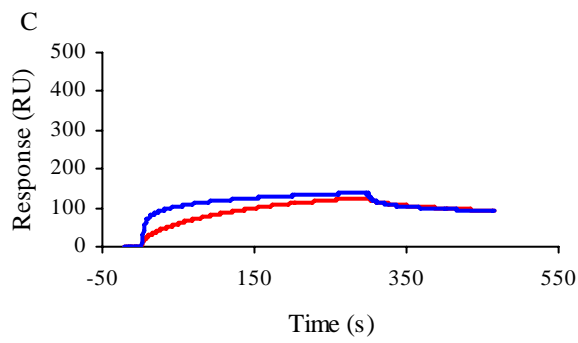
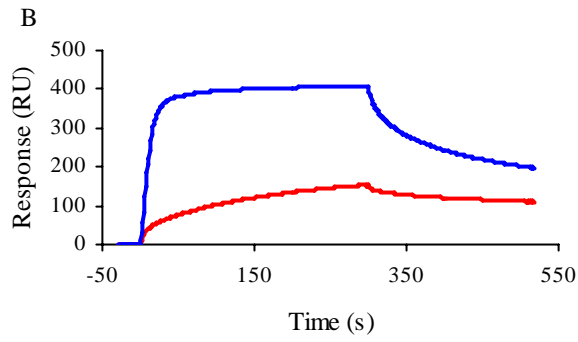
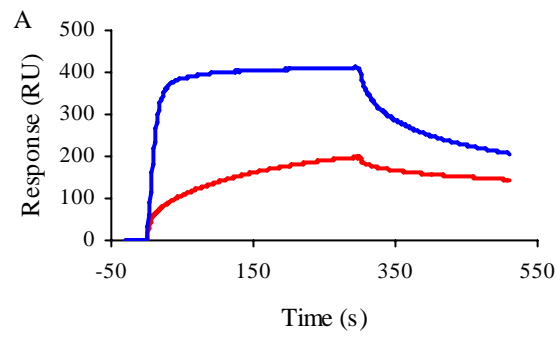
### Fig. S1

Sensorgrams showing the binding curves of wild type or mutant gp120 to heparin. Wild-type (A), K121S (B), R419S (C), K421S (D) or K432S (E) gp120 (50 nM), either alone (red curves) or pre-incubated with 50 nM sCD4 (blue curves), were injected over a heparin-activated sensor chip at a flow rate of 10  $\mu$ L/min, and the binding response in RU was recorded as a function of time.

### Fig. S2

Sensorgrams showing the binding curves of wild type or mutant gp120 to mAb 17b. Wild-type (A), K121S (B), R419S (C), K421S (D) or K432S (E) gp120 (50 nM), either alone (black curves), pre-incubated with 50 nM sCD4 (blue curves), or successively pre-incubated with sCD4 (50 nM) and heparin (200 nM) (red curves) were injected over a mAb 17b-activated sensor chip at a flow rate of 10  $\mu$ L/min, and the binding response in RU was recorded as a function of time.

**Figure S1**



**Figure S2**

