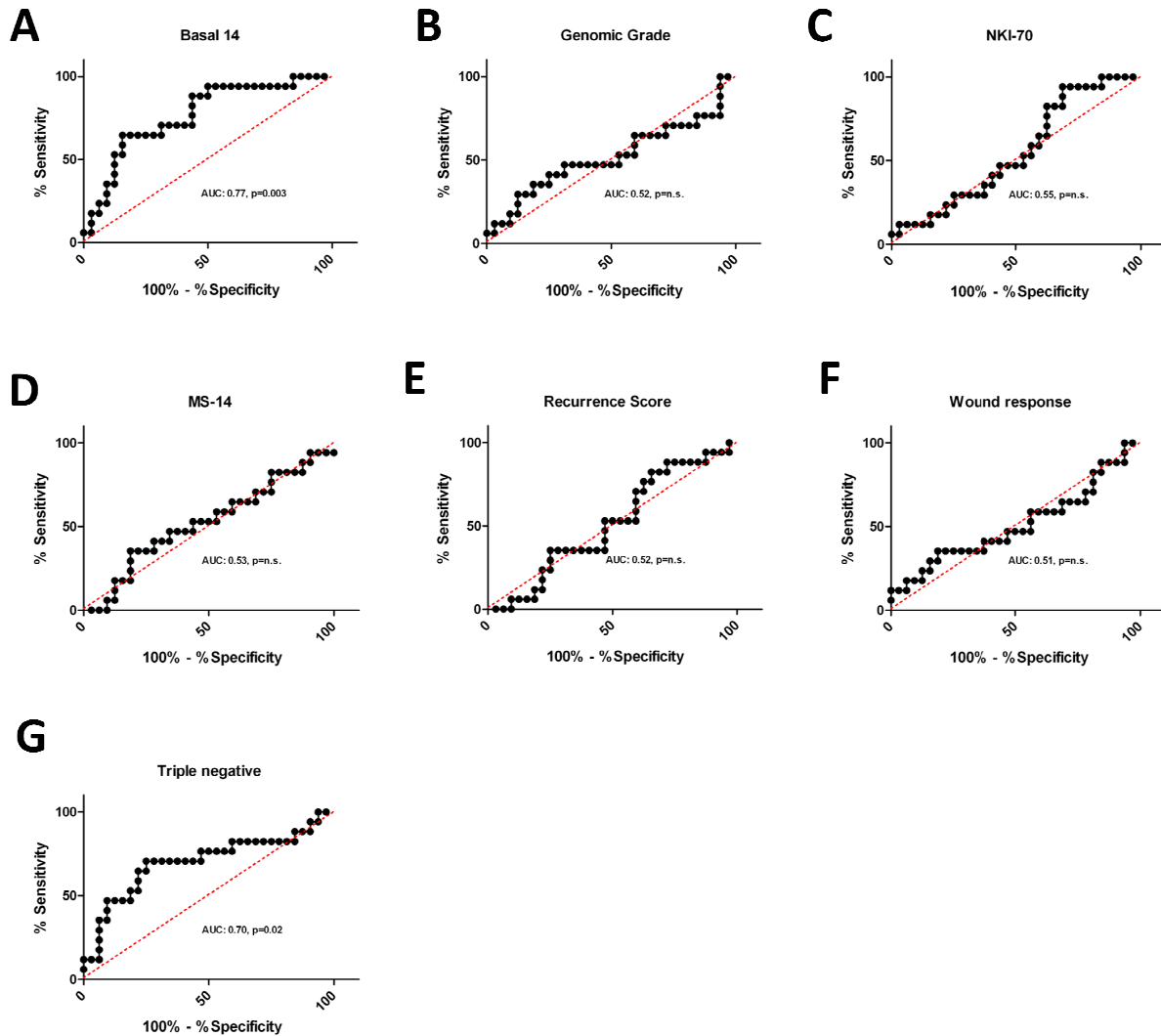


A Gene Signature for Predicting Outcome in Patients with Basal-like Breast Cancer

Robin M. Hallett, Anna Dvorkin-Gheva, Anita Bane and John A. Hassell



Supplementary figure 1. ROC curves for multiple prognostic signatures reported in the literature. ROC curves for **A)** Basal 14, **B)** Genomic Grade Index, **C)** NKI-70, **D)** Recurrence Score, **E)** CSR/Wound response, **F)** Triple Negative and **G)** MS-14 signatures. Only the Basal 14 (AUC: 0.77, $p = 0.003$) and Triple negative (AUC: 0.7, $p = 0.02$) signatures produced an AUC that was statistically significantly greater than 0.5.

