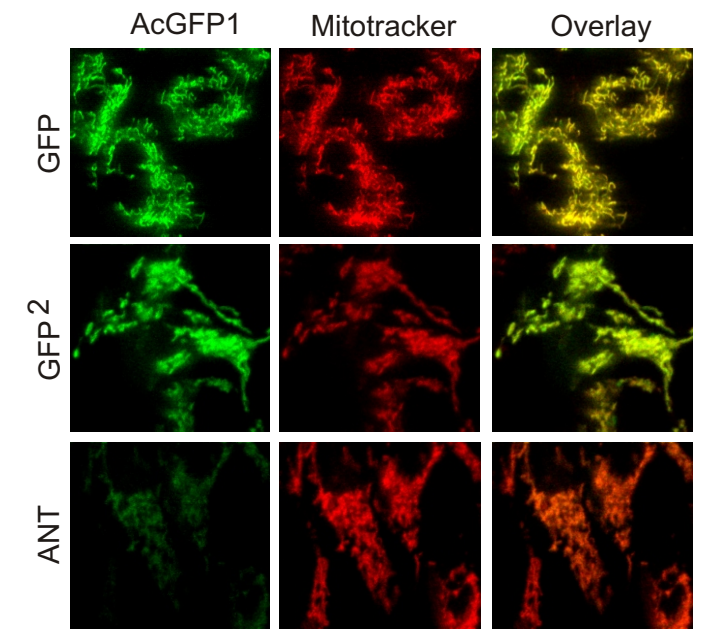
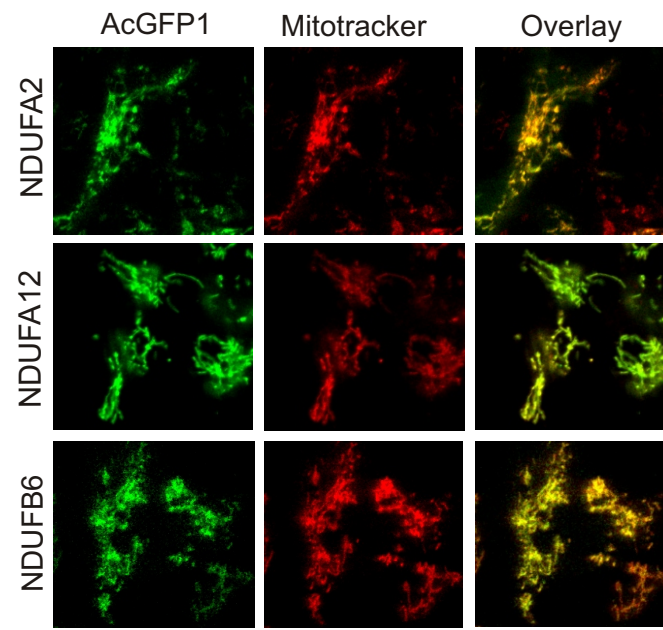
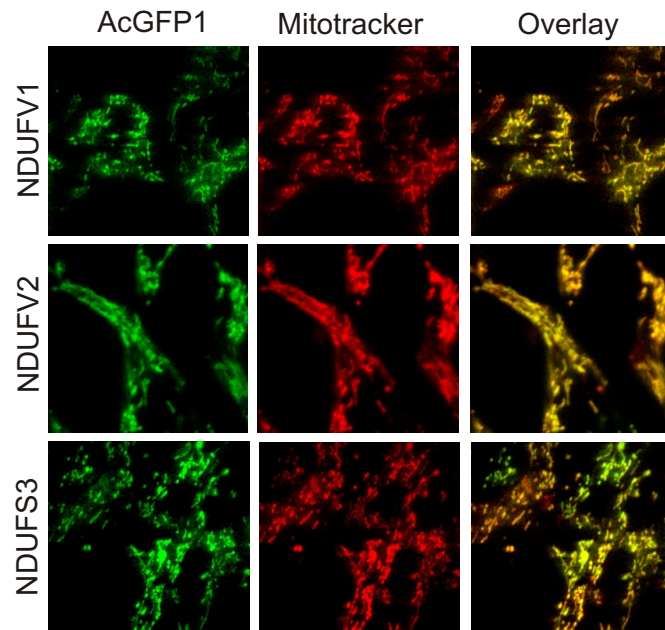
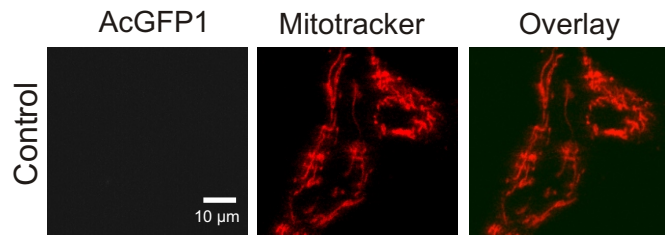


## **SUPPLEMENTARY FIGURE LEGENDS**

**Supplementary Figure 1: Mitochondrial localization of AcGFP1-tagged CI subunits.** Confocal images showing colocalization of AcGFP1 fluorescence and a mitochondrial marker dye (Mitotracker Red CM-2XRos) for the different cell lines. Data was obtained following expression induction.

**Supplementary Figure 2: Incorporation of AcGFP1-tagged subunits does not disturb CI activity and assembly.** BN-PAGE fluorograms of non-induced (-) and induced (+) cells expressing different AcGFP1-tagged CI subunits. Fluorescent CI and lower molecular weight fluorescent signals are marked with closed and open arrowheads, respectively. Image contrast was linearly optimized for each image-pair to allow visual comparison. Asterisks indicate an a-specific fluorescent band that is also present in wild-type cells after contrast optimization (not shown). CI in-gel activity (IGA), the total amount of CI (Western blotting with an NDUFA9 antibody) and amount of the CII subunit SDHA (loading control) are depicted for each condition.



Dieteren et al., Supplementary Fig. 1

