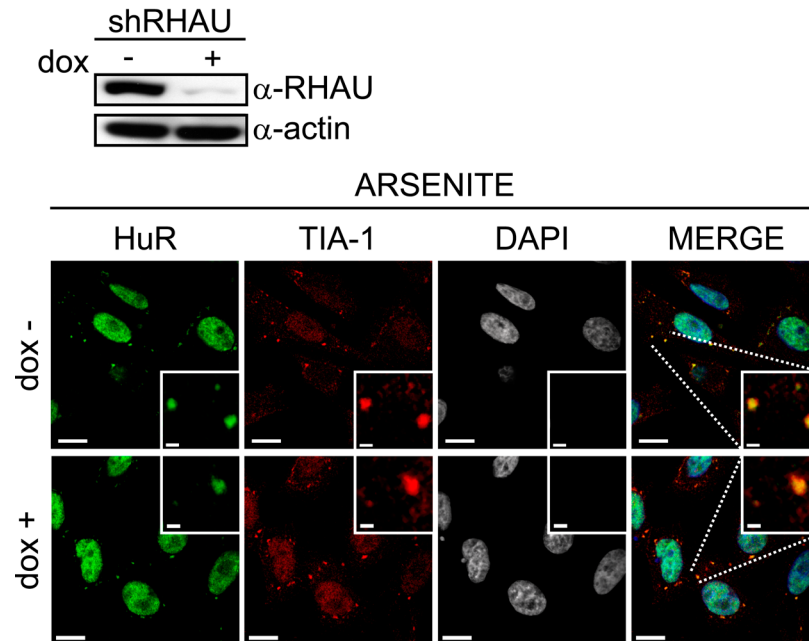


Supplementary Figure 1. RNAi-mediated downregulation of RHAU did not abrogate SG formation. Prior to arsenite treatment (0.5 mM for 45 min), T-REx-HeLa cells stably transfected with pTER-shRHAU were maintained in normal (dox -) or in conditioned medium containing 1 µg/ml of doxycycline (dox +) for 7 days to induce shRHAU expression. The depletion of RHAU protein was confirmed by Western blotting using monoclonal anti-RHAU antibody. After arsenite treatment, cells were fixed and stained with DAPI (white; blue in merge) to visualize nuclei and with anti-HuR and anti-TIA-1 antibodies (green and red) to detect SGs. Note that SGs were formed in both cell lines independently of RHAU depletion; *bar* 10 µm (1 µm in zooms).

Supplementary Figure 2. SDS-polyacrylamide gel electrophoresis (SDS-PAGE) analysis of purified recombinant proteins using Coomassie blue staining. (A) GST and GST-RHAU; (B) GST and GST-Nter (1;200aa); (← mark for purified protein; \* GST contamination)

Supplementary Figure 1



Supplementary Figure 2

