

Supplemental Figure Legends

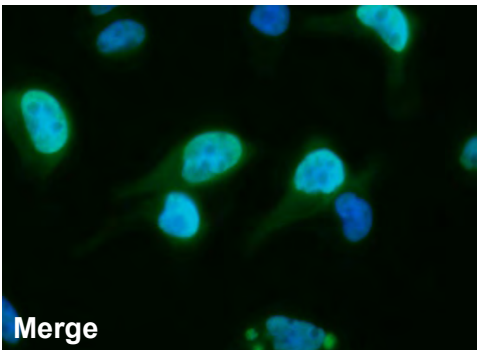
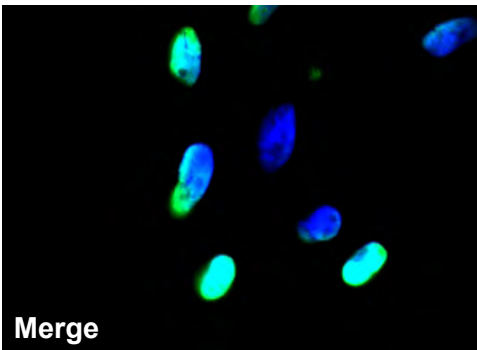
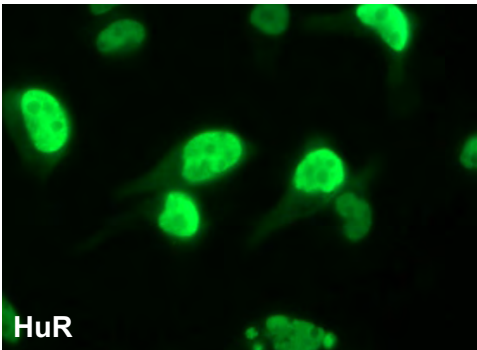
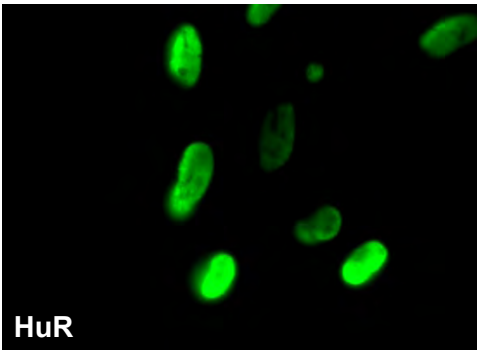
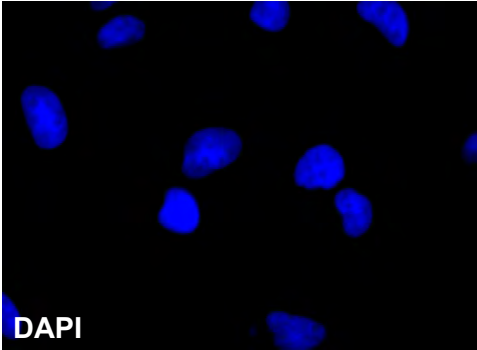
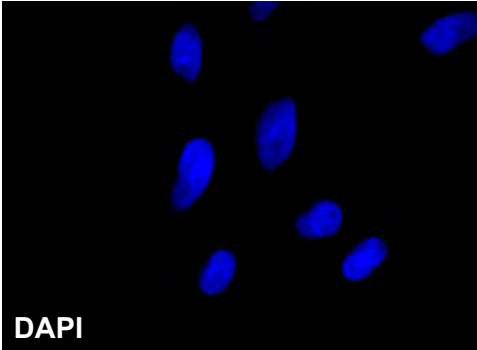
Supplemental Figure 1. Localization of HuR in HuR overexpressing cells. HeLa Tet-OFF/HuR-Flag cells were cultured in the presence or absence of Dox (2 mg/mL) to induce HuR-Flag. After 48 hr, cells were fixed and immunofluorescent detection of HuR, shown in green, was performed as described (12). DAPI was used to visualize nuclei (blue). Images were acquired at 63x objective magnification using a Zeiss AxioCam MRc5 and merged using Adobe Photoshop.

Supplemental Figure 2. Cytoplasmic localization of HuR in CRC cells displaying decreased miR-16 levels. CaCo2, HCA7, Moser, HT-29, and LoVo cells were fixed and immunofluorescent detection of HuR (green) was performed as previously described (12). Nuclei (blue) were visualized using DAPI. Images were acquired as described above.

Supplemental Figure 1

+ Dox (no induction)

- Dox (HuR overexpression)



Supplemental Figure 2

