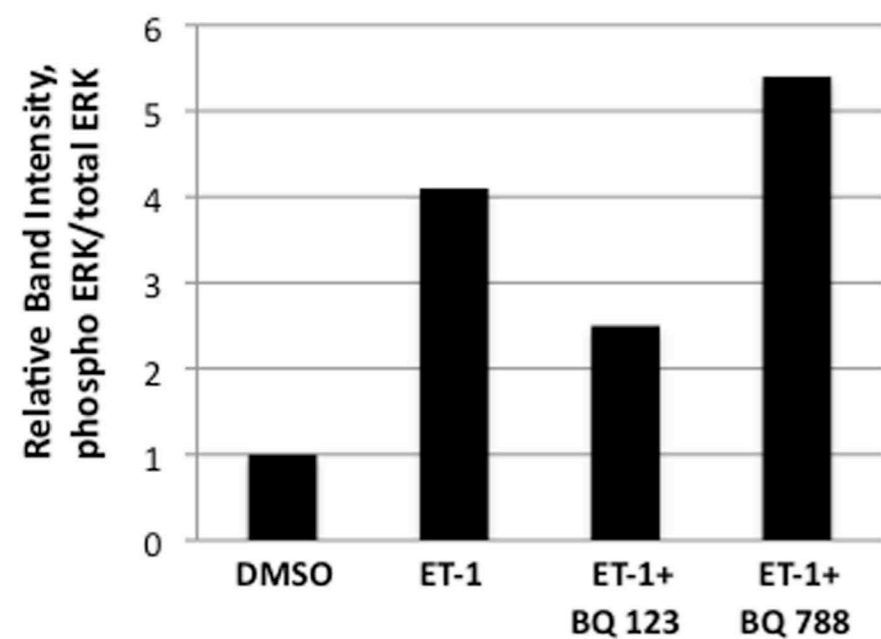
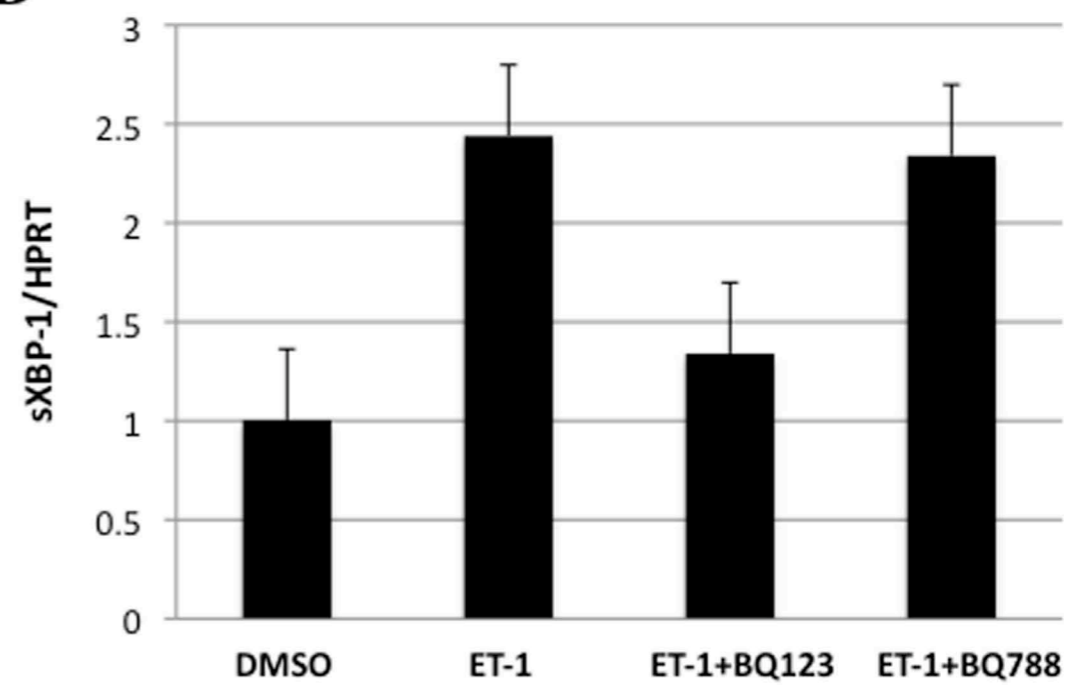
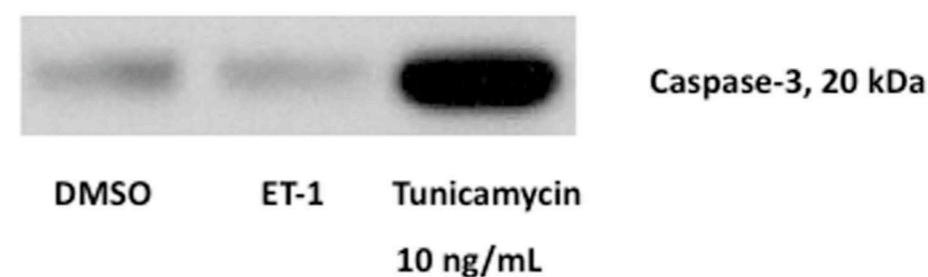
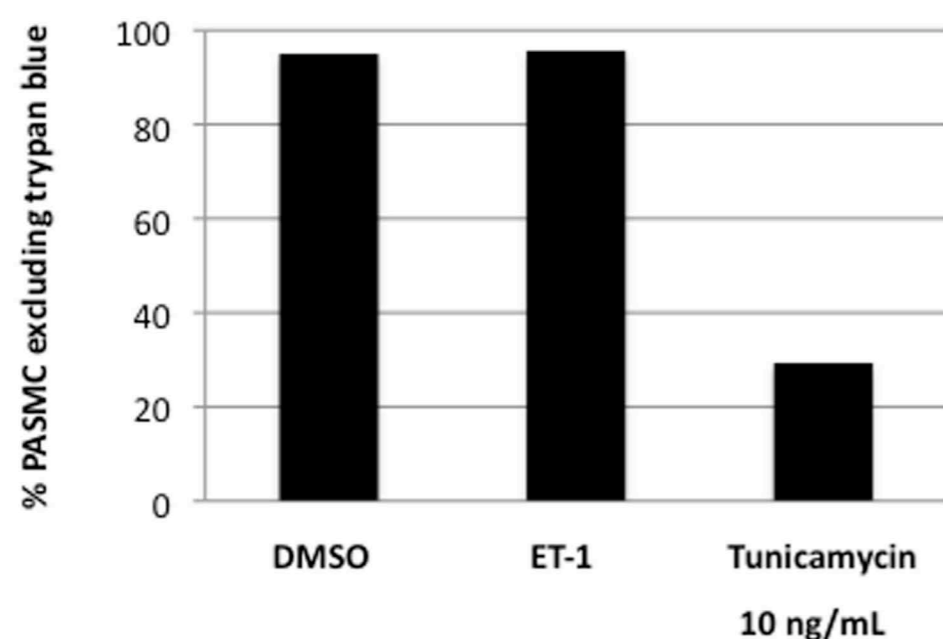


A**B****C**

Supplemental Figure 1 (A-B) The response of PASM cells from ETBR deficient rats to ET-1 mirrors BQ788 pharmacologic inhibition of ETB in wild type rat PASM cells. (A) Densitometry of pERK-1/2 Immunoblot and (B) XBP-1 splicing in PASM cells derived from ETB deficient rats show similar results compared to ETB inhibition in wild type PASM cells as shown in Figure 1C and Figure 3, respectively. (C) ET-1 activation of the ATF6 and IRE-1 pathways of the UPR does not induce wild type PASM cell apoptosis as measured by trypan blue exclusion (left) and immunoblot for activated caspase-3 (right).