

Inflammatory cell profiles in the lungs of ets-2 (WT/WT) and ets-2 (A72/A72) mice following bleomycin administration

					Differentials		
Days	Genotype	Treatment	n	Total cells x 10 ⁴	Macrophages X 10 ⁴	Neutrophils X 10 ⁴	Lymphocytes X 10 ⁴
11	Ets-2 (WT/WT)	bleomycin	5	7.2 ± 2.0	6.7 ± 1.8	0.3 ± 0.1	0.2 ± 0.1
11	Ets-2 (A72/A72)	bleomycin	4	1.6 ± 0.6	1.6 ± 0.6	0.03 ± 0.01	0.02 ± 0.008
p-value: ets-2 (WT/WT) vs ets-2 (A72/A72) at day 11.				0.021	0.021	0.283	0.22
22	Ets-2 (WT/WT)	bleomycin	5	2.8 ± 1.0	2.7 ± 1.0	0.09 ± 0.04	0.006 ± 0.005
22	Ets-2 (A72/A72)	bleomycin	5	11.6 ± 2.0	10.8 ± 2.2	0.8 ± 0.4	0.07 ± 0.03
p-value: ets-2 (WT/WT) vs ets-2 (A72/A72) at day 22.				0.011	0.011	0.173	0.126
33	Ets-2 (WT/WT)	PBS	3	2.9 ± 0.6	2.9 ± 0.6	None detected	None detected
33	Ets-2 (WT/WT)	bleomycin	5	12.0 ± 2.3	12.0 ± 2.3	None detected	None detected
p-value: ets-2 (WT/WT) bleomycin vs ets-2 (WT/WT) PBS at day 33.				0.02	0.009		
33	Ets-2 (A72/A72)	PBS	4	2.6 ± 0.5	2.6 ± 0.5	None detected	None detected
33	Ets-2 (A72/A72)	bleomycin	7	8.3 ± 2.0	6.8 ± 1.4	0.8 ± 0.6	0.7 ± 0.6
p-value: ets-2 (A72/A72) bleomycin vs ets-2 (A72/A72) PBS at day 33.				0.13	0.17		
NOTE: Comparisons at day 33 between bleomycin or PBS treated ets-2 (WT/WT) and ets-2 (A72/A72) mice revealed no significant differences.							

Figure E1

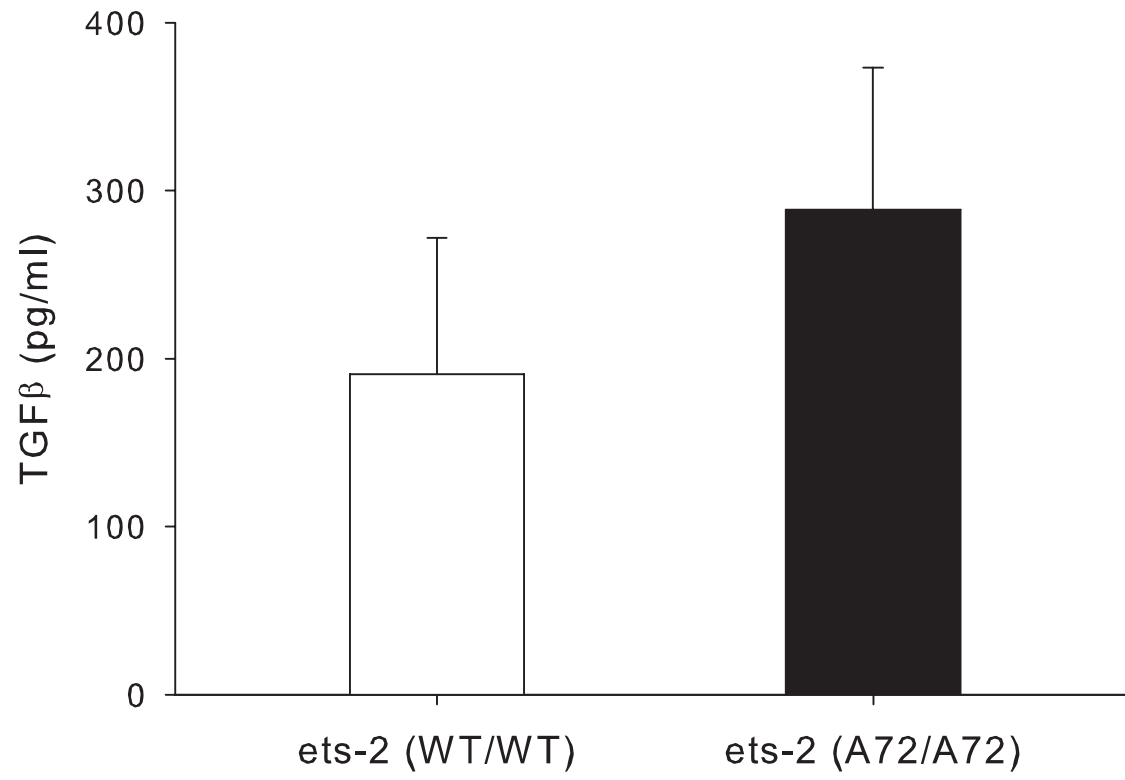
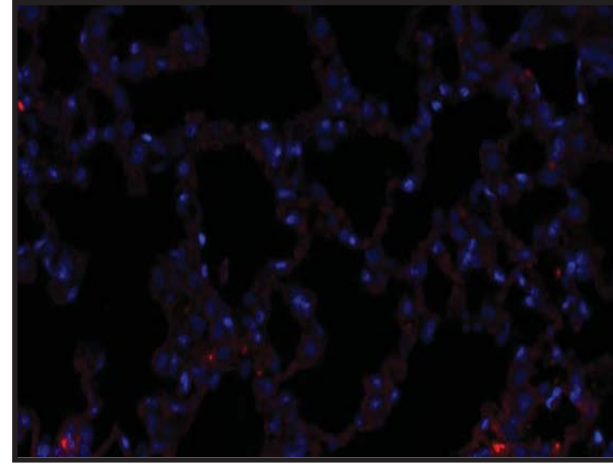
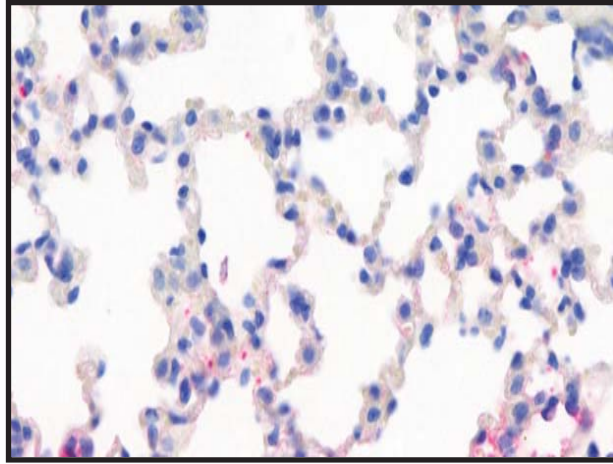
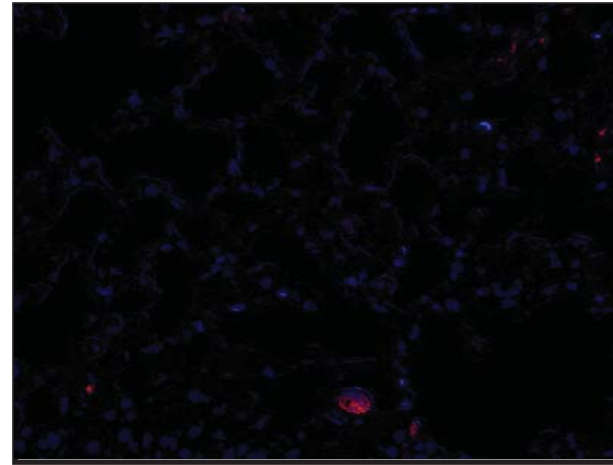
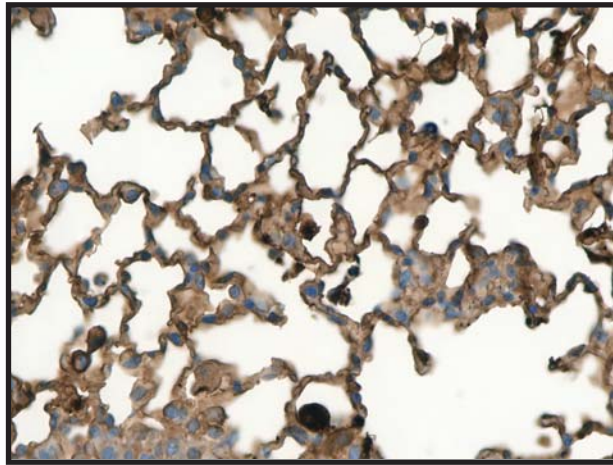


Figure E2

11-days



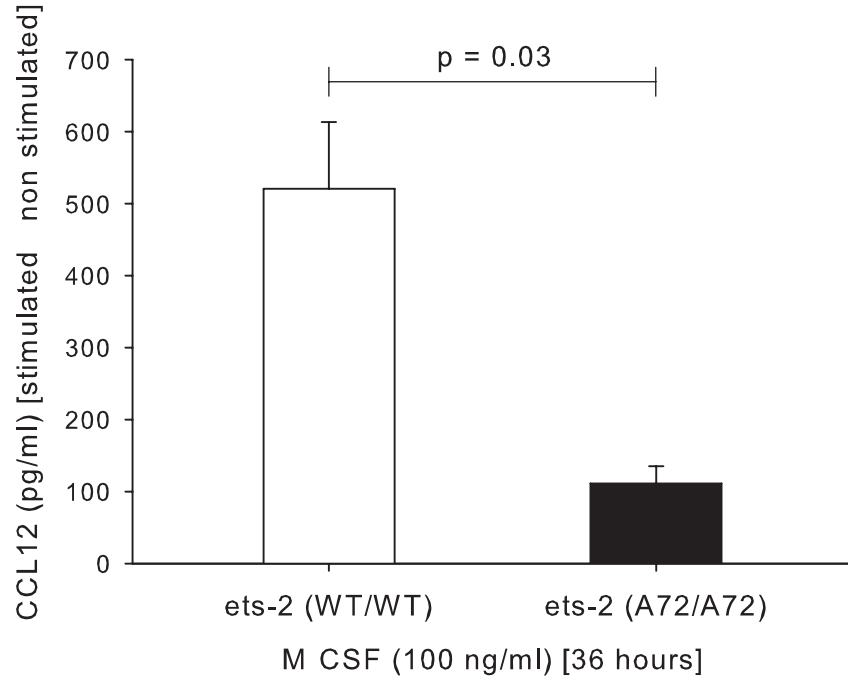
22-days



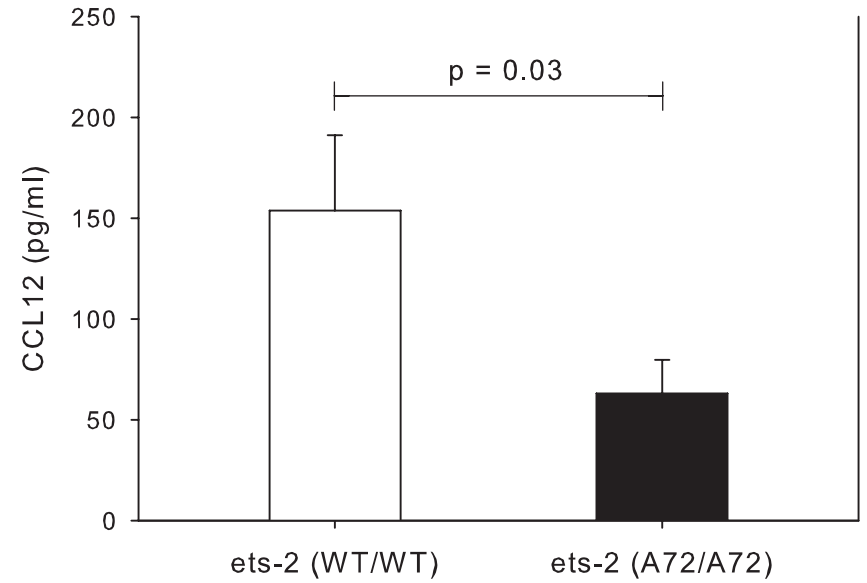
150 nm

Figure E3

A



B



C

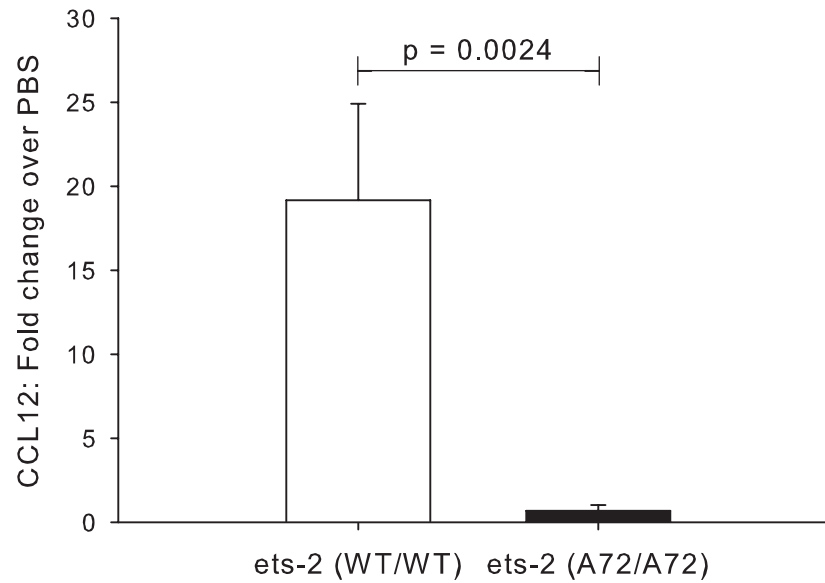


Figure E4

