

Supplementary Figure 1

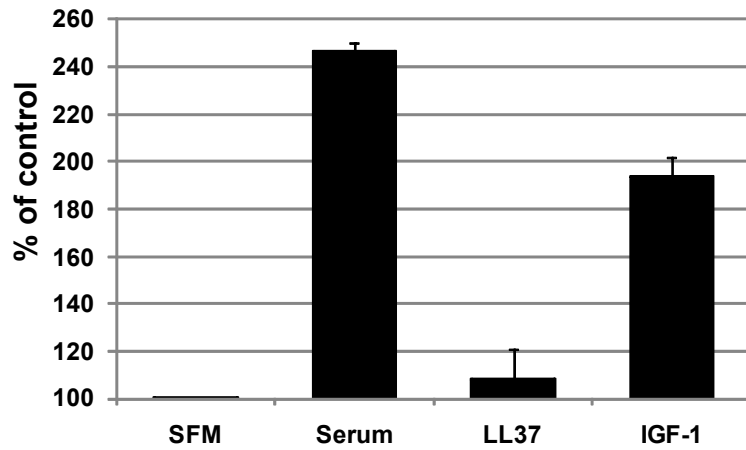


Figure legend

Effects of LL-37 on cell proliferation.

MCF-7 cells were serum starved overnight and then stimulated with LL-37, IGF-1 or 10% serum or maintained in serum free media (SFM) for 48 h. Cell proliferation was evaluated by colorimetric a assay (XTT). The cell density at start of the experiments was in all experiments 25,000 cells/well. The values represent means of three experiments; bars, \pm SE.