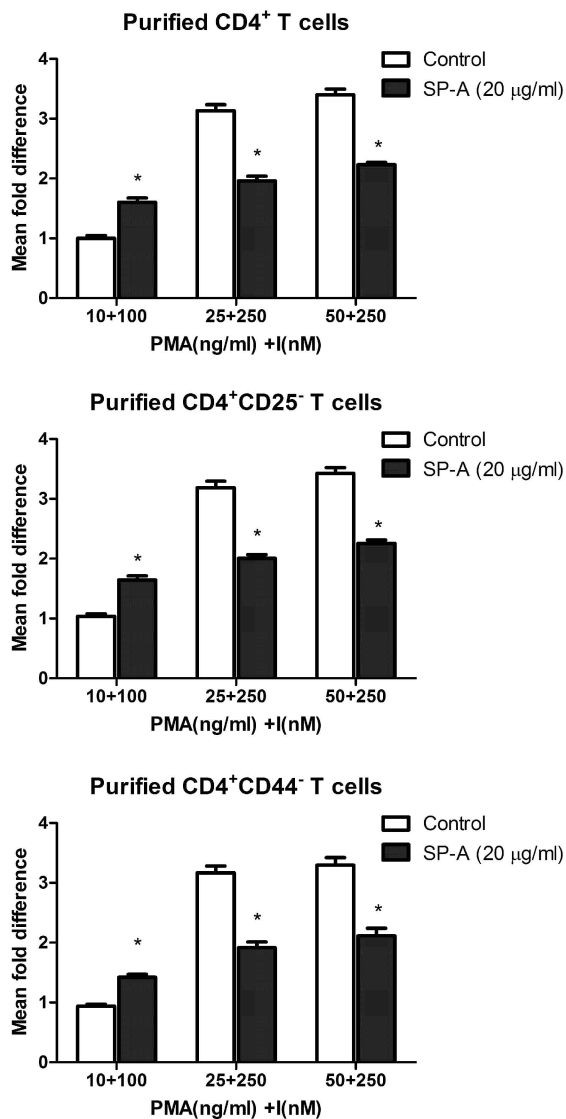


Supplementary Figure S1



SP-A mediated modulation of T cell proliferation is an intrinsic property of the bulk T cell population.

Equal numbers of purified T cells, or purified cells that were subject to C⁻-mediated depletion and magnetic selection to eliminate CD25⁺ or CD44⁺ T cells. Cells were then activated with different concentrations of PMA+I as previously described. For comparison of the different populations, the mean cpm obtained from replicate culture wells was normalized to undepleted, purified CD4⁺ cells activated with the lowest concentration of PMA+I. *p<0.02 compared to respective controls from 3 independent experiments.

Cells activated with relatively low signal strengths show an increase in proliferation in the presence of SP-A, whereas cells activated with stronger signals are inhibited. This activation profile was unaffected by depletion of either CD4⁺CD25⁺ (~regulatory) or CD4⁺CD44⁺ (~memory) T cells, suggesting that the SP-A/signal strength mediated 'switch' mechanism is an intrinsic property of the global T cell population.