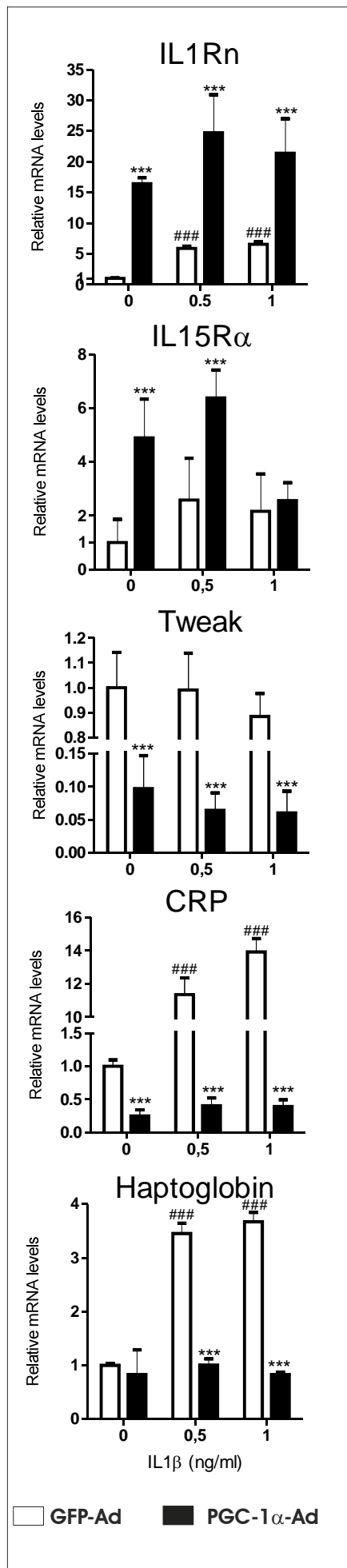


# Supp.Fig.2



**Suppl. Fig.2.** Mouse primary hepatocytes were transduced with PGC-1 $\alpha$ -Ad or GFP-Ad (MOI=1). After 24 h culture medium was replaced and cells treated with different doses of IL1 $\beta$  for additional 24 hours as indicated. Hepatocytes were collected; mRNA isolated and analyzed with SYBRGreen QPCR. Data are presented as fold change compared to GFP-Ad without IL1 $\beta$  (normalized as one). Values represent means +SD, n=3. \*\* P< 0.01, \*\*\* P<0.001 statistical significance compared to GFP-Ad samples; ### P<0.001 GFP-Ad compared to 0ng/ml IL1 $\beta$  sample (Student two tailed t-test).