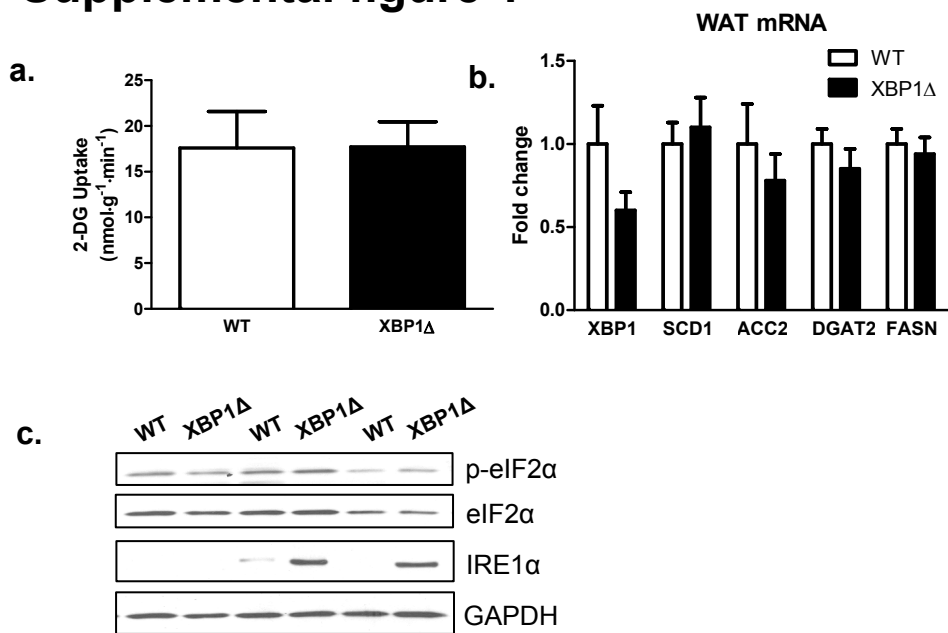


Supplemental figure 1



Supplemental figure 1. Adipose tissue from XBP1Δ mice show no signs XBP1 deletion, ER stress or changes in insulin-stimulated glucose metabolism. (a) Adipose-specific glucose uptake during hyperinsulinemic-euglycemic clamp. **(b)** Quantitative PCR of cDNA from white adipose for XBP1 and lipogenic genes. **(c)** Western blotting of white adipose for markers of ER stress. (n=6-9 for both genotypes for each panel). Blots shown are representative of 6-9 mice per genotype.