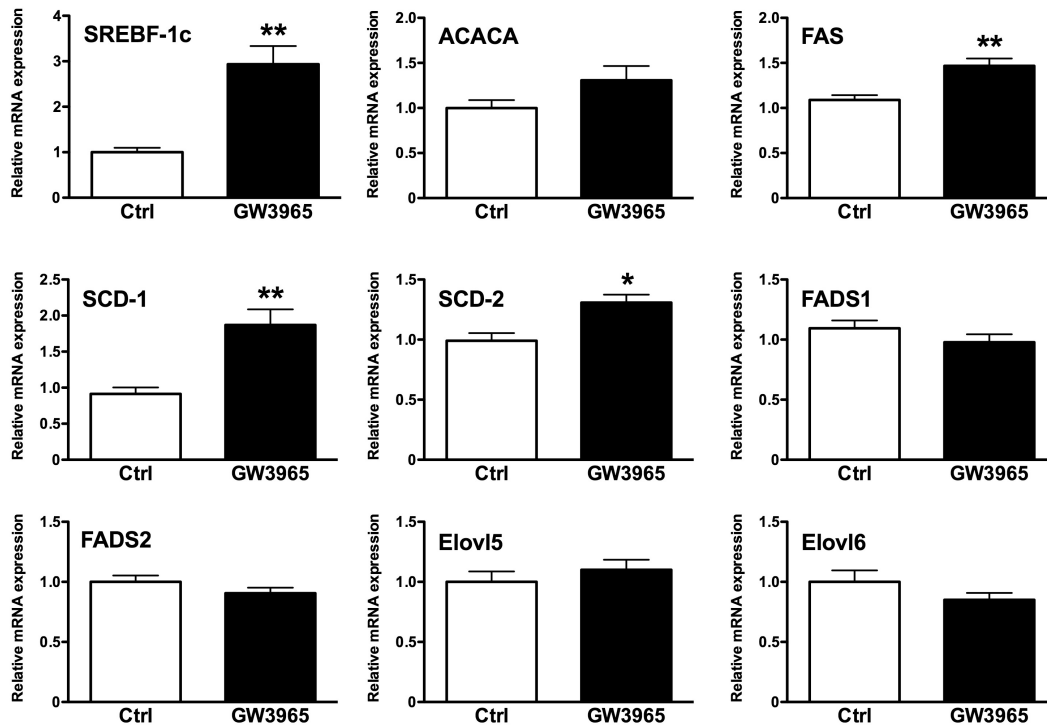
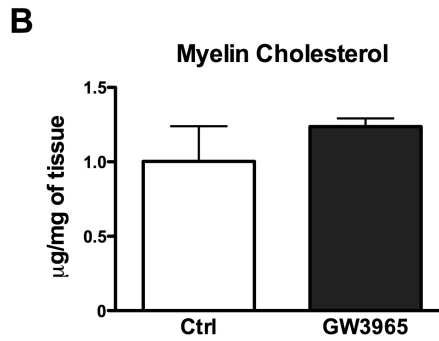
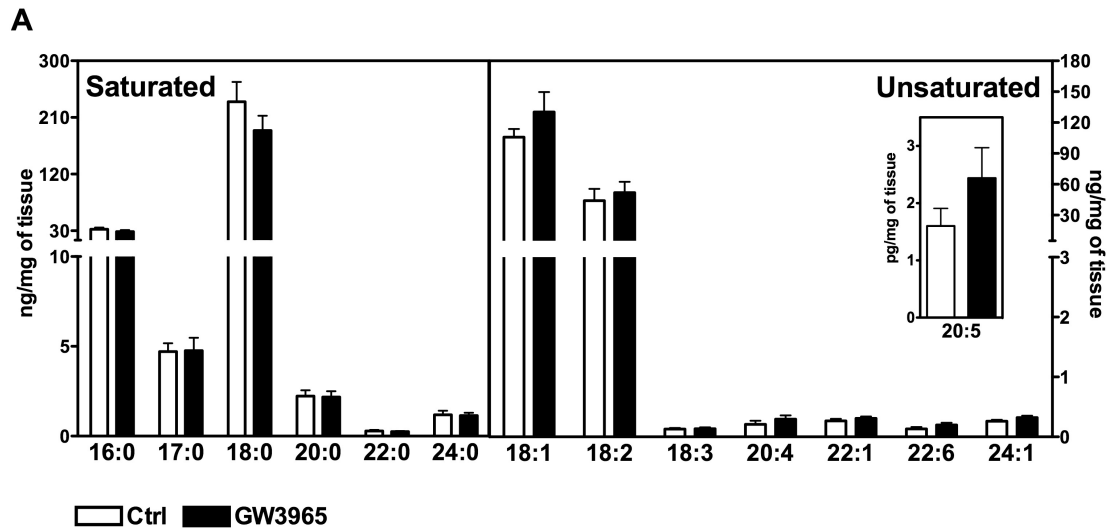


Supplementary Figures

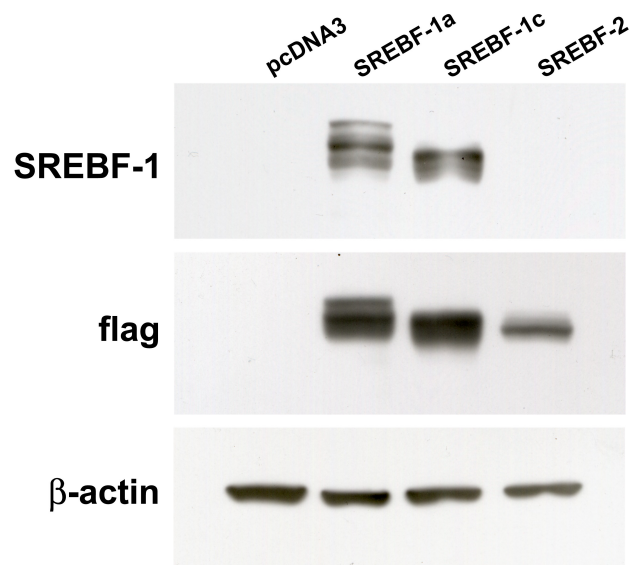
Diabetes induced myelin abnormalities are associated with an altered lipid pattern: protective effects of LXR activation



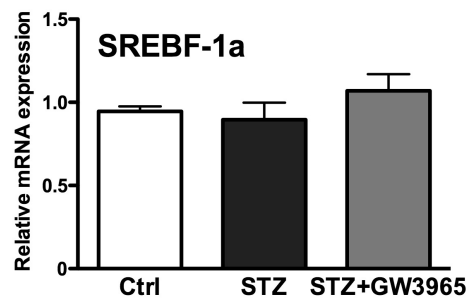
Supplementary Fig. 1. Expression profile of fatty acid biosynthesis genes in non-diabetic rats treated with vehicle (Ctrl) or GW3965. Statistical analysis was performed by Student *t* test. Data are expressed as mean \pm SEM. $n=8$ animals per group. * $P < 0.05$, ** $P < 0.001$ vs. Ctrl rats.



Supplementary Fig. 2. Lipidomic profile of sciatic nerve purified myelin from non-diabetic rats treated with vehicle (Ctrl) or GW3965. **A:** Fatty acids profile. **B:** Cholesterol levels. Data are expressed as mean \pm SEM. n= 8 animals per group.



Supplementary Fig. 3. SREBF-1 antibody validation. Hek293T individually transfected with flag tagged mature forms of SREBF-1a, SREBF-1c and SREBF-2 and the control pcDNA3. Shown are the bands detected with the SREBF-1, flag or β -actin antibody.



Supplementary Fig. 4. mRNA levels of SREBF-1a in control, STZ and STZ-GW3965 treated rats.