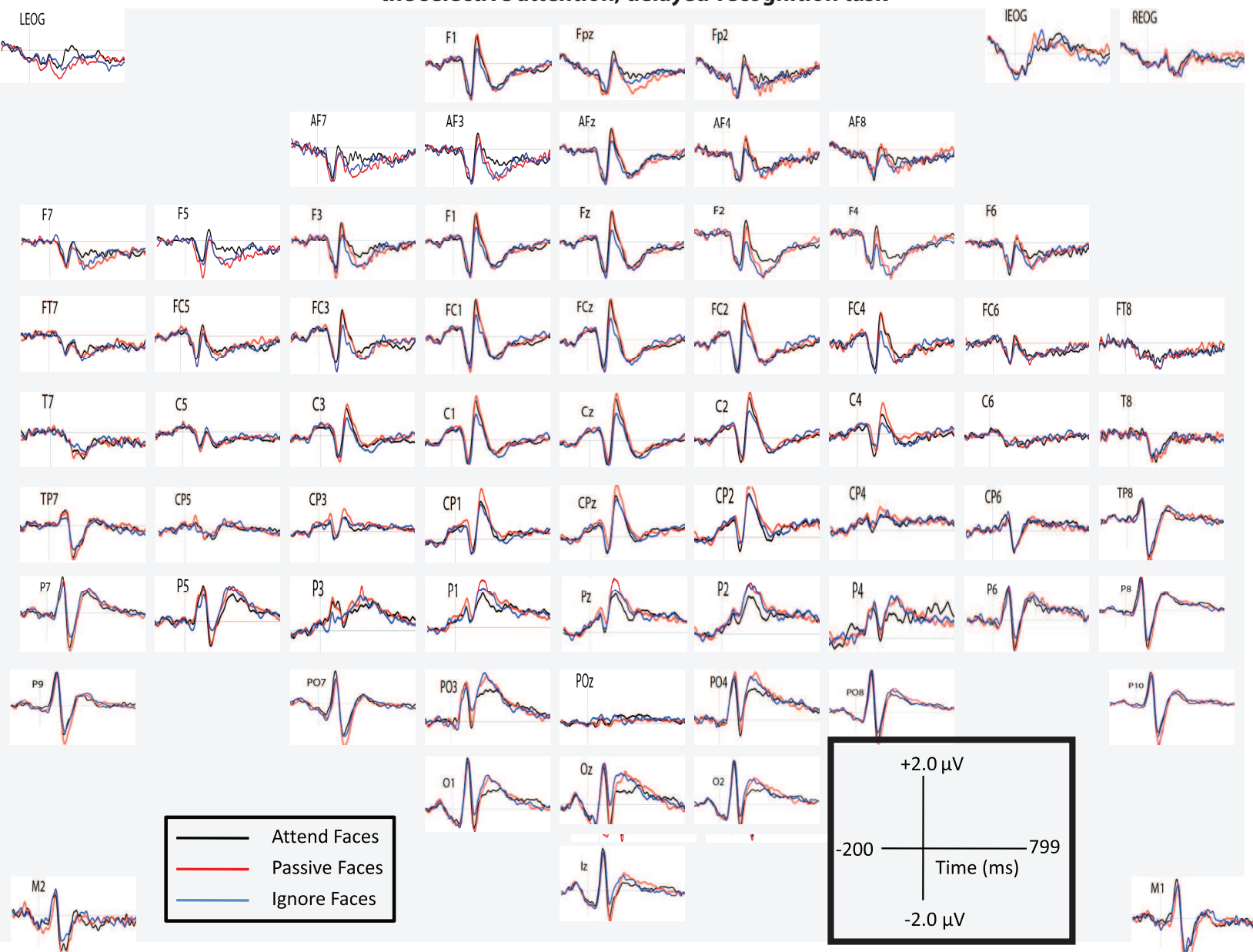
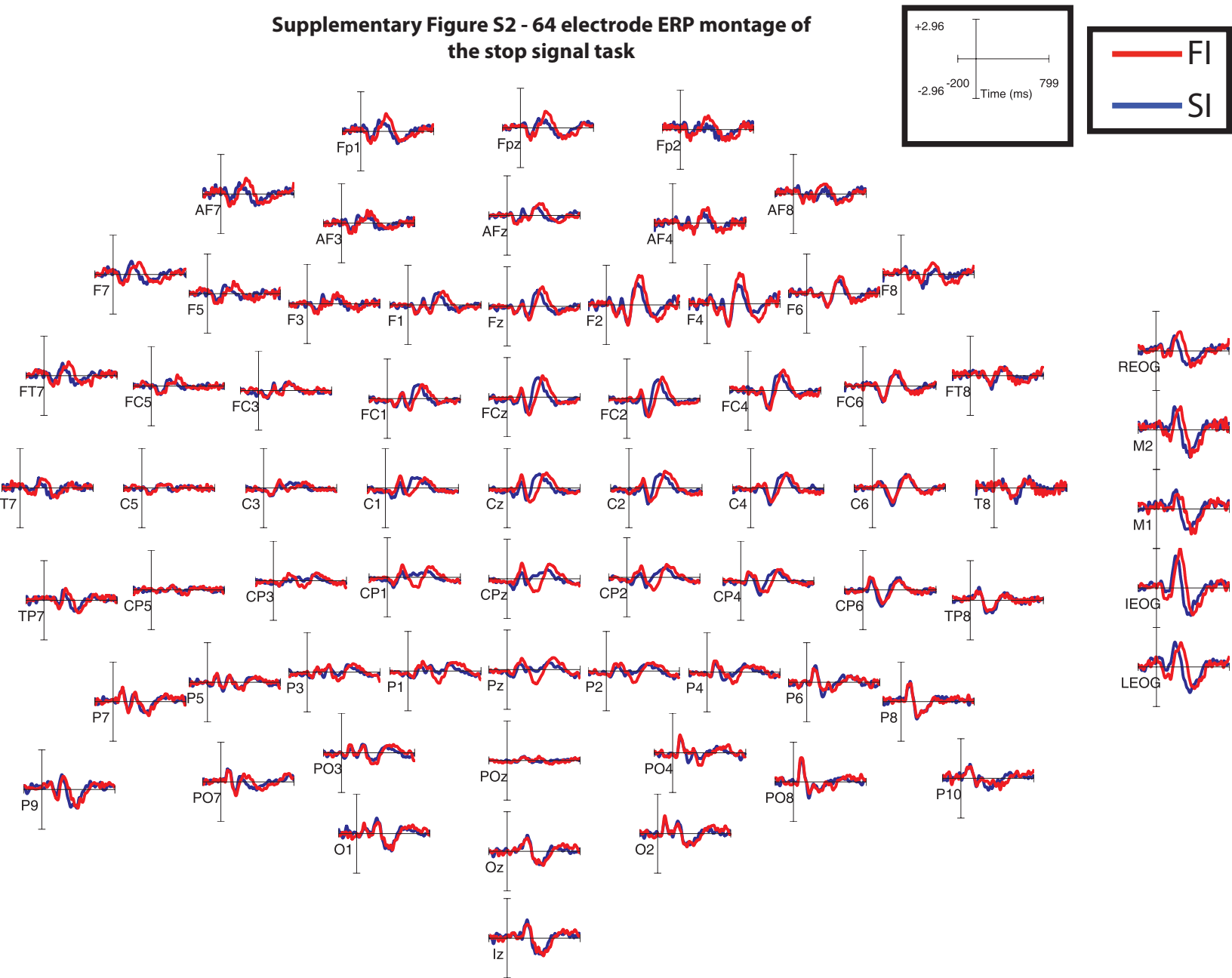


Supplementary Figure S1 - 64 electrode ERP montage of the selective attention, delayed-recognition task



Supplementary Figure S2 - 64 electrode ERP montage of the stop signal task



Supplementary Table S1 - Neuropsychological and Cognitive Metrics.

Neuropsychological tests: Mean (S.E.)	Standard Deviation from Normative Values (S.E.)	
CVLT: Trial 5 recall	12.9 (.7)	0.90 (.23)
CVLT: Short delay free recall	11.5 (.9)	1.05 (.25)
CVLT: Short delay cued recall	12.7 (.6)	0.90 (.21)
CVLT: Long delay free recall	12.3 (.8)	1.08 (.24)
CVLT: Long delay cued recall	12.8 (.7)	0.95 (.21)
Memory for modified Rey	12.1 (.6)	0.18 (.18)
WAIS-R: backward digit span	5.8 (.3)	1.09 (.21)
WAIS-R: digit symbol	51.6 (2.3)	0.28 (.17)
Trail making test: A	29.0s (2.2)	0.31 (.16)
Trail making test: B	81.8s (7.0)	0.21 (.10)
Stroop: Color naming	84.1 (3.0)	0.20 (.35)
Stroop: Color-word naming	49.9 (2.7)	-0.11 (.17)
Semantic fluency	21.3 (1.5)	0.21 (.31)
Phonemic fluency	13.8 (1.0)	-0.40 (.16)
Calculation ability (out of 5)	4.9 (.1)	n/a*
Dysexecutive Questionnaire (DEX)	12.5 (1.9)	-

Tests of Cognitive Impairment: Mean (S.E.)	Standard Deviation from Normative Values (S.E.)	
Mini-mental state examination	29.4 (.3)	.83 (.22)
Geriatric depression scale	2.9 (.7)	n/a*

\* This measure does not have published normative measures