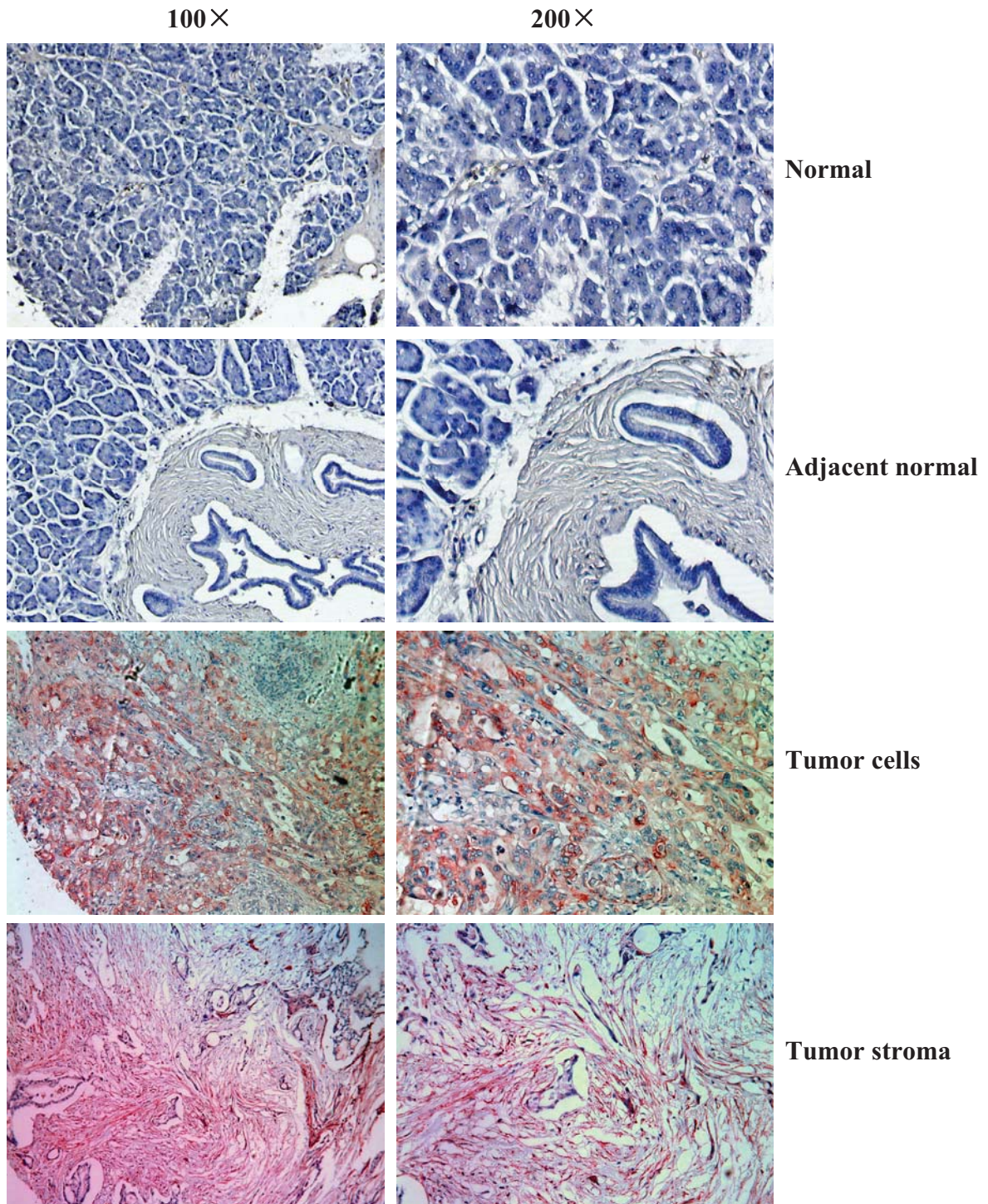
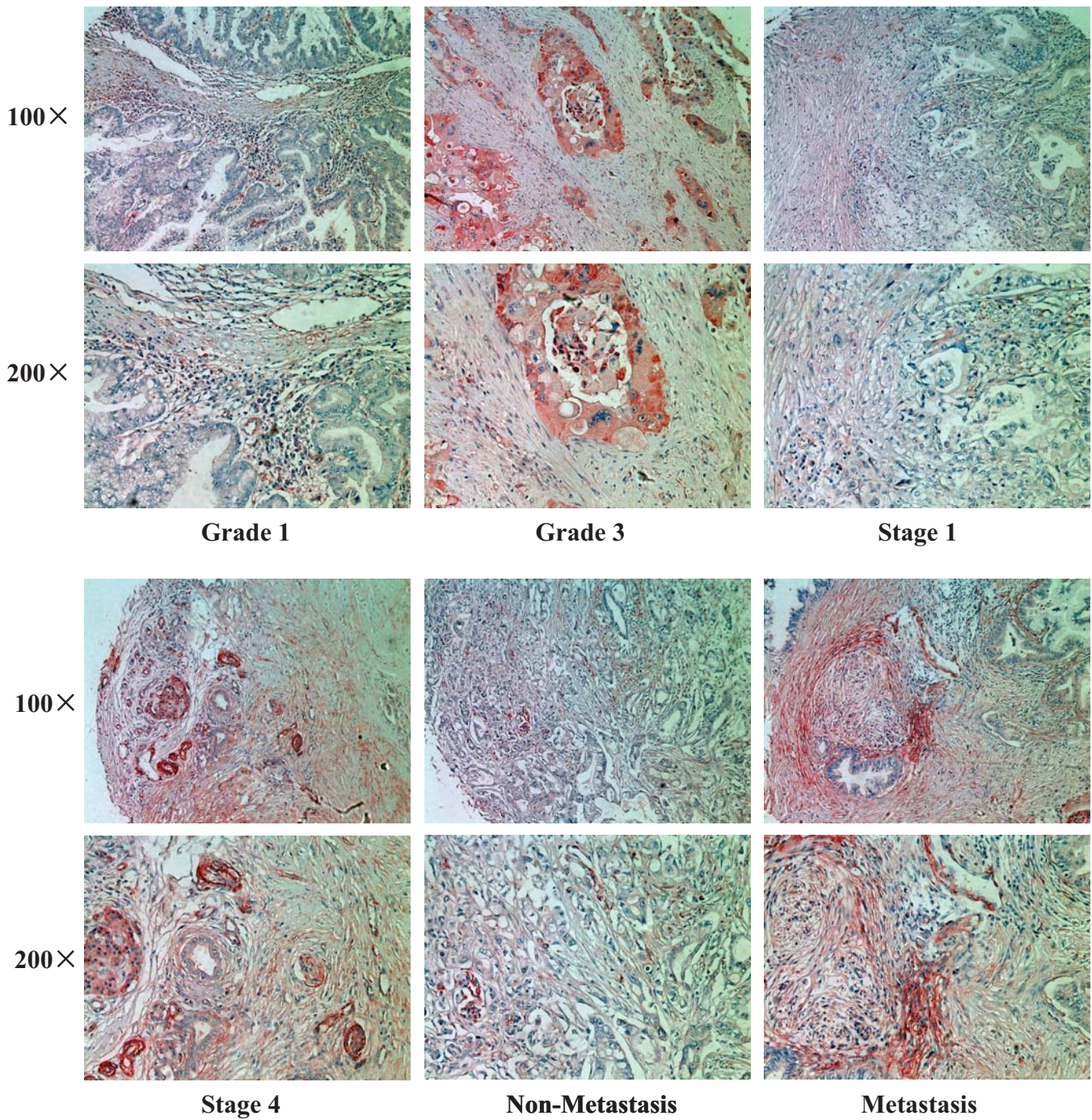


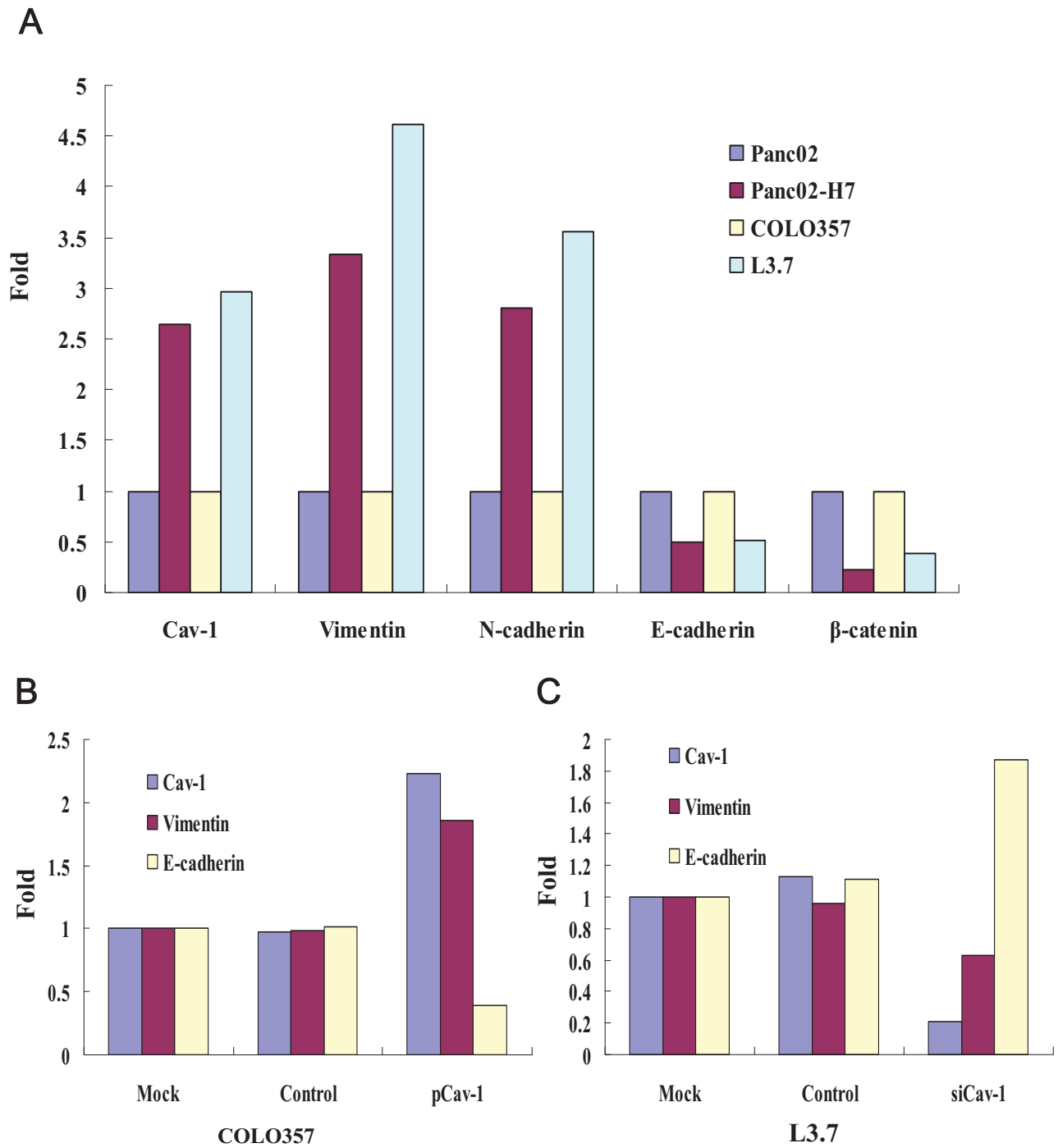
Supplementary Fig. 1. IHC in pancreatic cancer tissue. Representative photos of negative IgG control were shown at both lower and higher magnifications, respectively. **A** and **B** were the negative IgG control staining for Cav-1 and FoxM1, respectively.



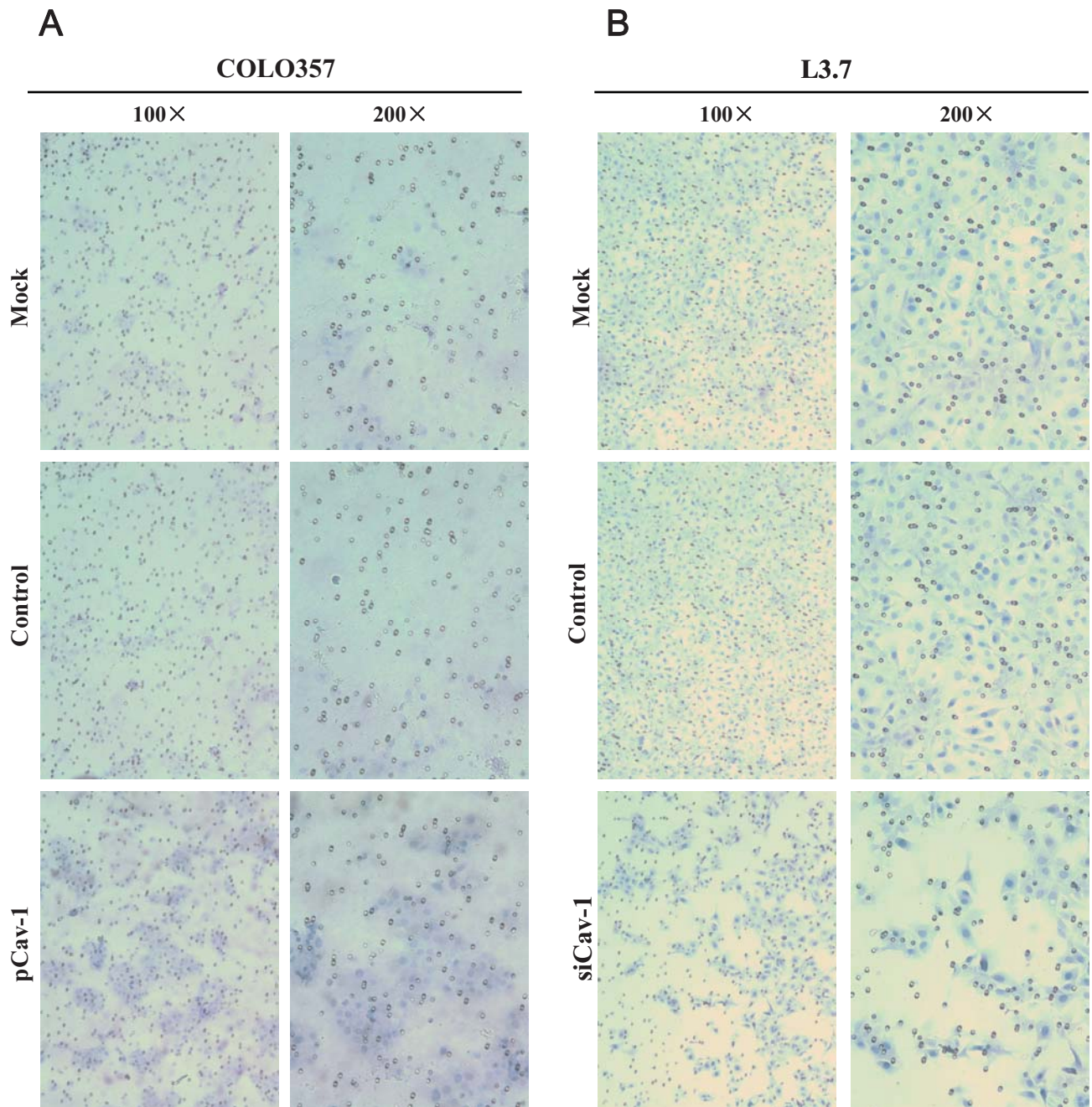
Supplementary Fig. 2. Representative photos of Cav-1 protein expression in normal pancreatic tissue, adjacent normal pancreatic tissue, tumor cells and tumor stroma were shown at both lower and higher magnifications, respectively.



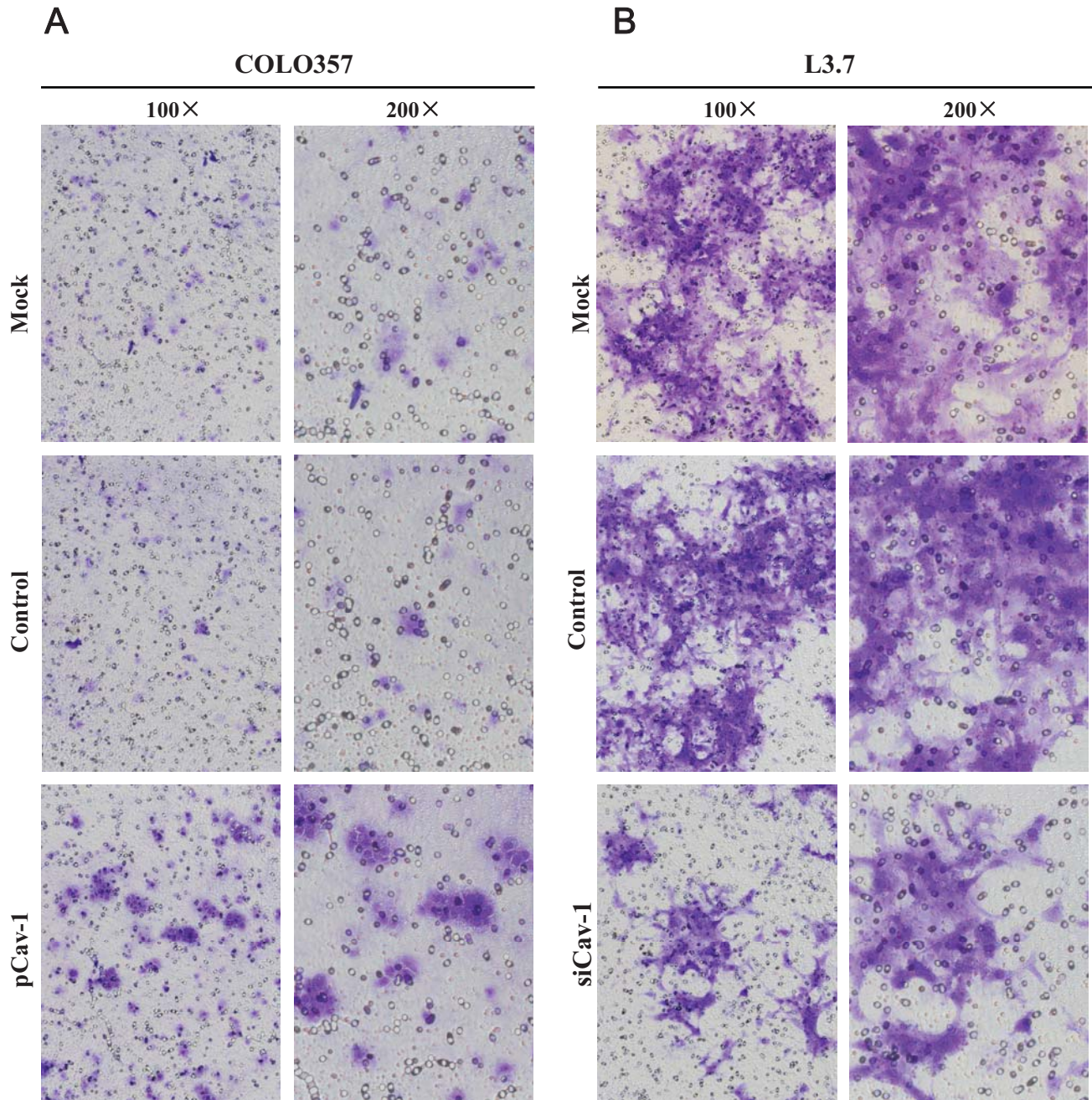
Supplementary Fig. 3. Representative photos of Cav-1 protein expression in Grade 1 and 3 , Stage 1 and 4, non-metastasis and metastasis were shown at both lower and higher magnifications, respectively.



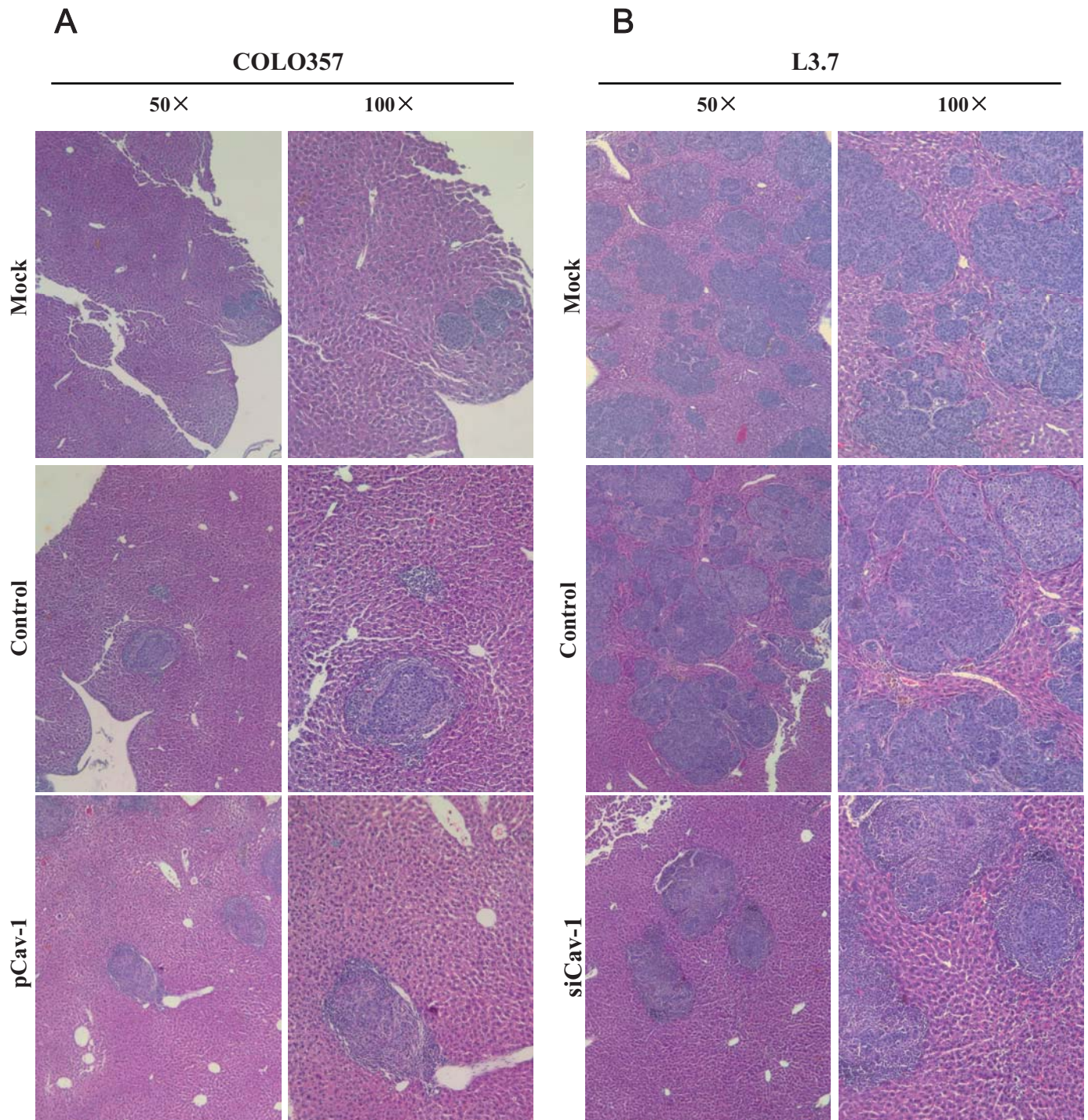
Supplementary Fig. 4. Densitometric analysis of gene expression and standardization to GAPDH
A, Western blot quantitative results of Fig. 2D, and fold change of Panc02 and COLO357, respectively; **B & C**, Western blot quantitative results of Fig. 3C, and fold change of Mock group.



Supplementary Fig. 5. COLO357 (**A** panels) and L3.7 cells (**B** panels) were transfected with pcDNA3.1-Cav-1 and Cav-1 siRNA for 48 h, respectively. Representative tumor cells migrated through a membrane were photographed at both lower and higher magnifications, respectively.



Supplementary Fig. 6. COLO357 (**A** panels) and L3.7 cells (**B** panels) were transfected with pcDNA3.1-Cav-1 and Cav-1 siRNA for 48 h, respectively. Representative tumor cells invaded through Matrigel were photographed at both lower and higher magnifications, respectively.



Supplementary Fig. 7. Representative photos of H&E staining of liver metastasis by COLO357 (**A** panels) and L3.7 cells (**B** panels) were taken at both lower and higher magnifications, respectively.