

Supplementary information, Figure S4

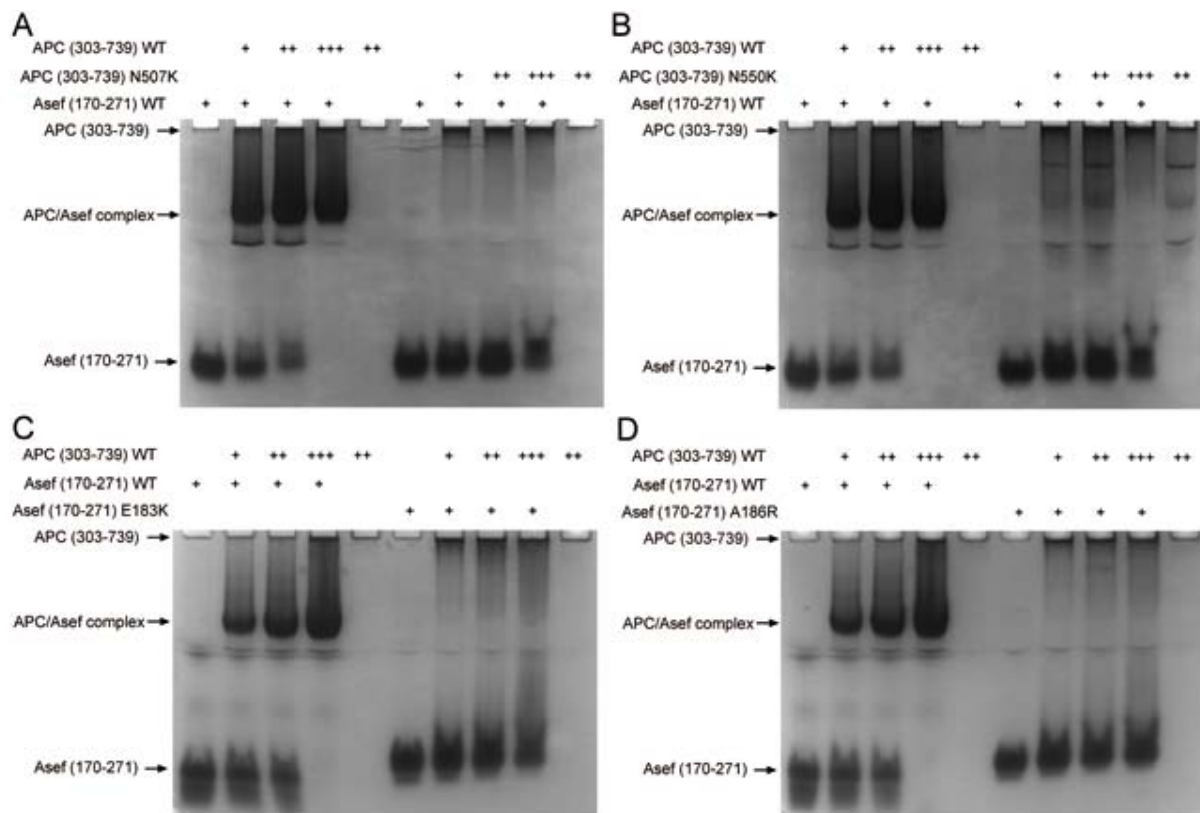


Figure S4 Using the non-denaturing gel EMSA assay to examine the effects of APC and Asef point mutations on the APC/Asef complex formation. **(A)** WT APC (303-739) interacted with WT Asef (170-271) as assayed by EMSA, whereas APC (303-739) N507K point mutant had decreased binding with WT Asef (170-271). Note that the intensity of the band of Asef (170-271) decreased a lot with increasing amount of WT APC, but only slightly with increasing amount of APC N507K. **(B)** APC N550K point mutation impaired the APC (303-739)/Asef (170-271) complex formation. **(C)** Asef E183K point mutation impaired the APC (303-739)/Asef (170-271) complex formation. **(D)** Asef A186R point mutation impaired the APC (303-739)/Asef (170-271) complex formation.