

Supplementary information, Figure S6

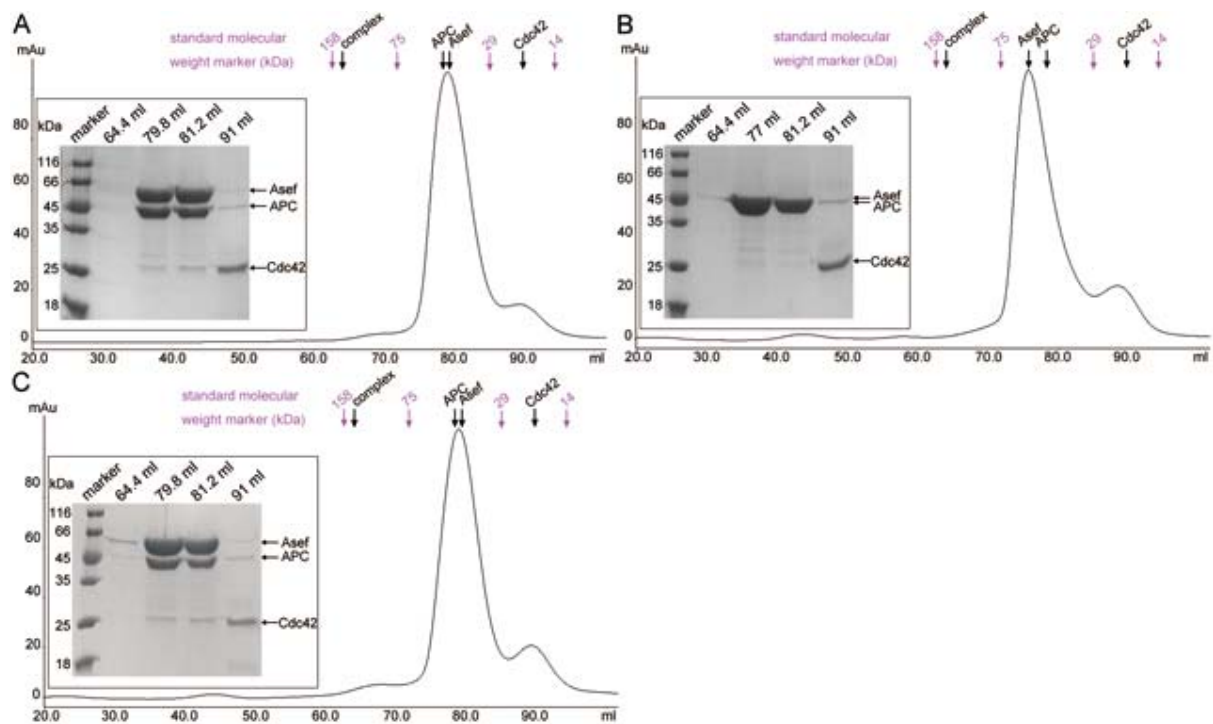


Figure S6 Using the HiLoad 16/60 Superdex 200 gel filtration chromatography assay to examine the effects of point mutations in APC-PreARM-ARM or Asef (170-632) on the APC/Asef/Cdc42 ternary complex formation. **(A)** Point mutation of N507K in APC-PreARM-ARM disrupted the APC/Asef/Cdc42 ternary complex formation. **(B)** Point mutation of E183K in Asef (170-632) disrupted the APC/Asef/Cdc42 ternary complex formation. **(C)** Point mutation of A186R in Asef (170-632) disrupted the APC/Asef/Cdc42 ternary complex formation.