

Supplementary information, Figure S1

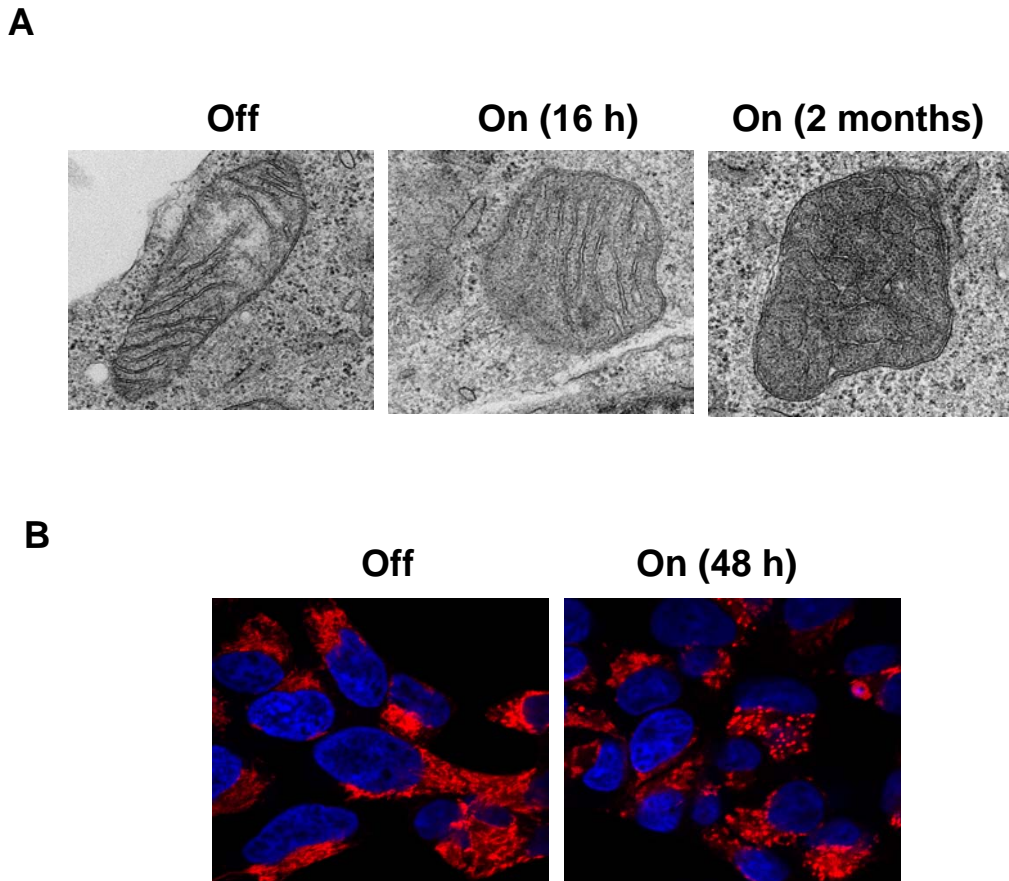


Figure S1 Morphological alteration of T-Rex cells after K-ras induction. **(A)** Mitochondrial morphology in T-Rex cells before and after K-ras induction for 16 h and 2 months (long-term on). Representative images were taken by transmission electron microscopy with 6000X magnification. K-ras-induced cells displayed swollen and disrupted cristae structure of mitochondria, compared to the control cells with organized cristate structure of mitochondria. **(B)** Mitochondria and nuclear were stained with MitoTracker Red and DAPI, and photographed with magnified views at 60X objective.