

Supporting Information

Adibi et al. 10.1073/pnas.1116726109

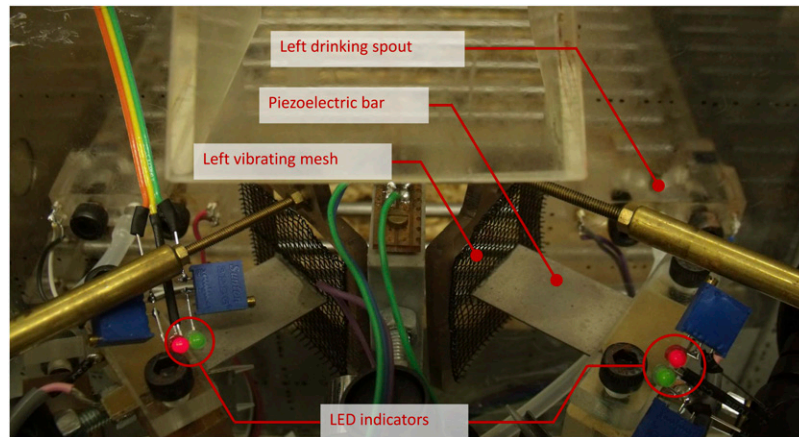
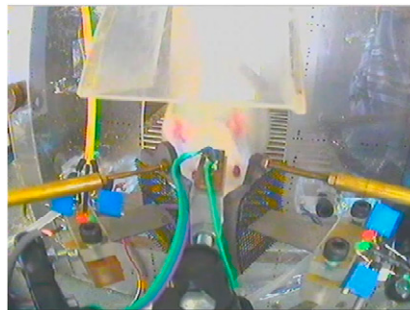


Fig. S1. Front view of the experimental apparatus. Each mesh was connected to a piezoelectric ceramic bar that generated the movement. A drinking spout was located at each side of the nose-poke aperture. A pair of light-emitting diodes (LEDs) was installed on each side. The red LEDs indicate the onset and the side of the $S+$ stimulus and the green LEDs indicate the reward onset at the corresponding side. The LEDs are for illustration purposes only and were not normally visible to the rat.



Movie S1. A correct trial slowed down by a factor of 4. Red LED indicates the side at which $S+$ is presented (in this trial to the left whiskers). The green LED indicates the presentation of reward. LEDs were added here only for clarity of illustration and were not present during the training or the test phases of the experiment.

[Movie S1](#)