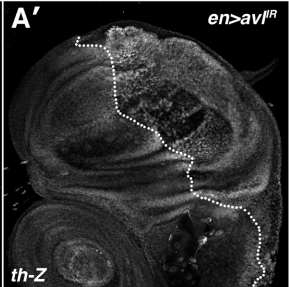
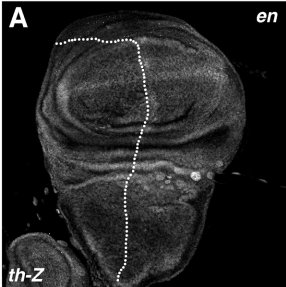


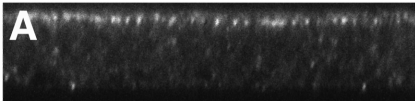
Figure S1. *syx7/avl-IR* has a very mild effect on *th-lacZ* expression. (A) α - β -gal staining of larval imaginal wing discs in which the *th-lacZ* reporter has been placed into the background of *en>syx7/avl-IR* flies. Posterior compartment is to the right of the dotted line.

Figure S2. The Crumbs accumulation in early, mid and late endocytic mutants. Immunostaining for the Crumbs extracellular domain (α -Crb^{ECD}) in (A) control (*w¹¹¹⁸*), (B) *en>AP-2 σ -IR*, (C) *en>syx7/avl-IR*, (D) *en>rab-7-IR*, or (E) *en>vps25-IR* discs. All images were obtained in the posterior compartment of indicated genotypes using identical microscope settings.

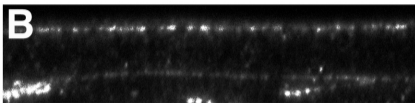
Figure S3. aPKC expression in AP-2 mutants. Lateral confocal images of (A–A') *en>AP-2 σ -IR,GFP* wings discs stained for aPKC.

Figure S4. Ex expression is altered in late endolysosomal mutants. Corresponding tangential and lateral confocal images of *ept^{x1},H99* clones in the eye (A) and *en>AP-2 σ -IR* wings discs (B) stained for Ex protein. *ept^{x1},H99* clones marked by the absence of GFP. Arrow in (A) indicates loss of Ex from a GFP-negative *ept^{x1},H99* clone. Asterisks in lateral sections denote wildtype and mutant clones. Arrow in (B) indicates accumulation of Ex in the posterior compartment of *en>AP-2 σ -IR* animals in which AP-2 has been reduced. Posterior is to the right of the dotted line in (B).

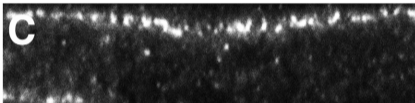




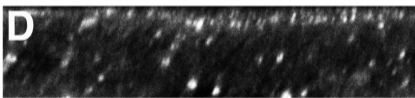
w¹¹¹⁸



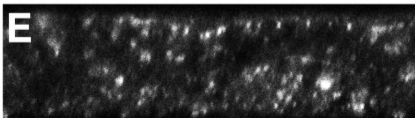
AP2 σ ^{IR}



syx7/avl^{IR}



rab-7^{IR}



vps25^{IR}

