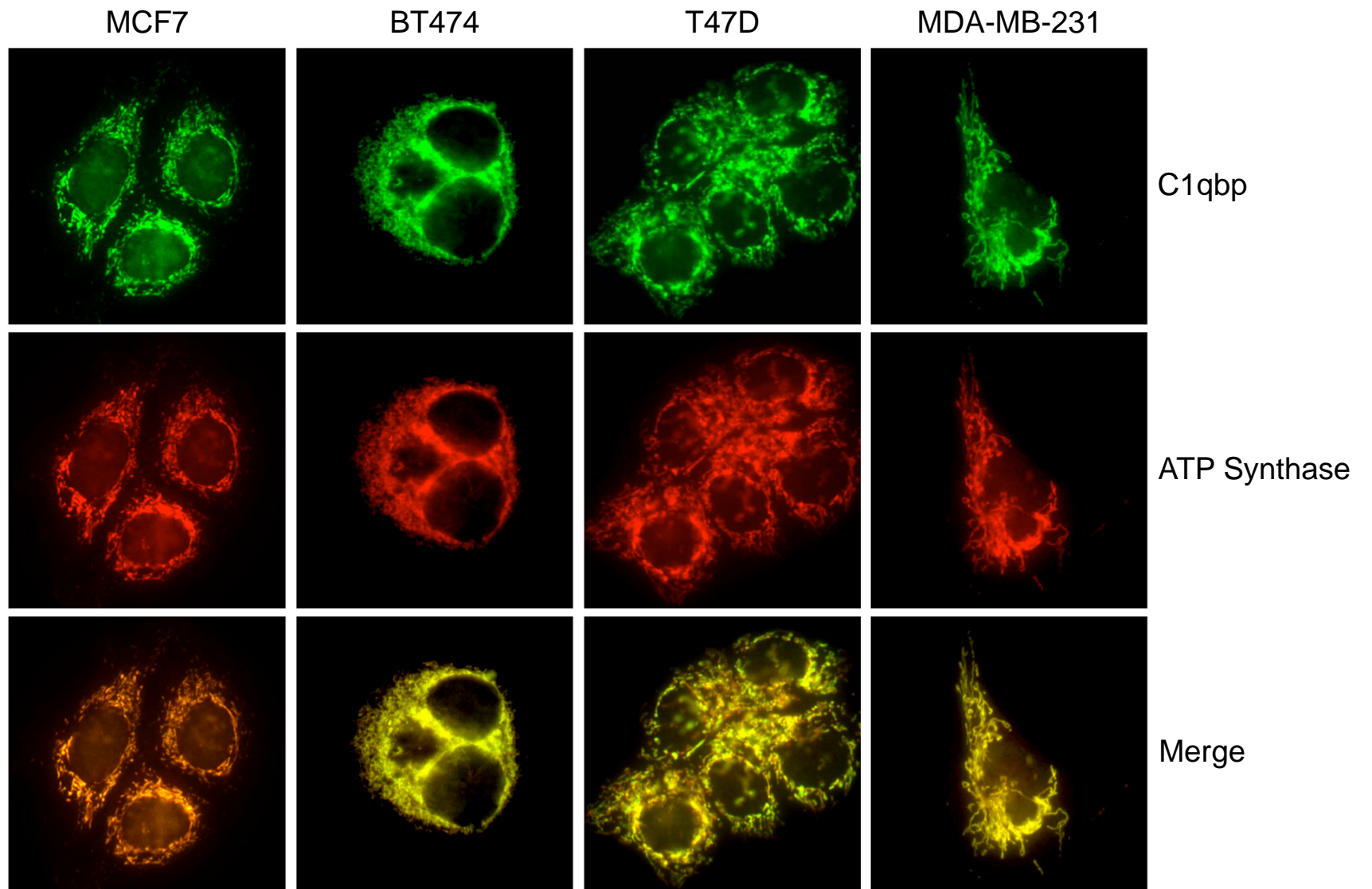
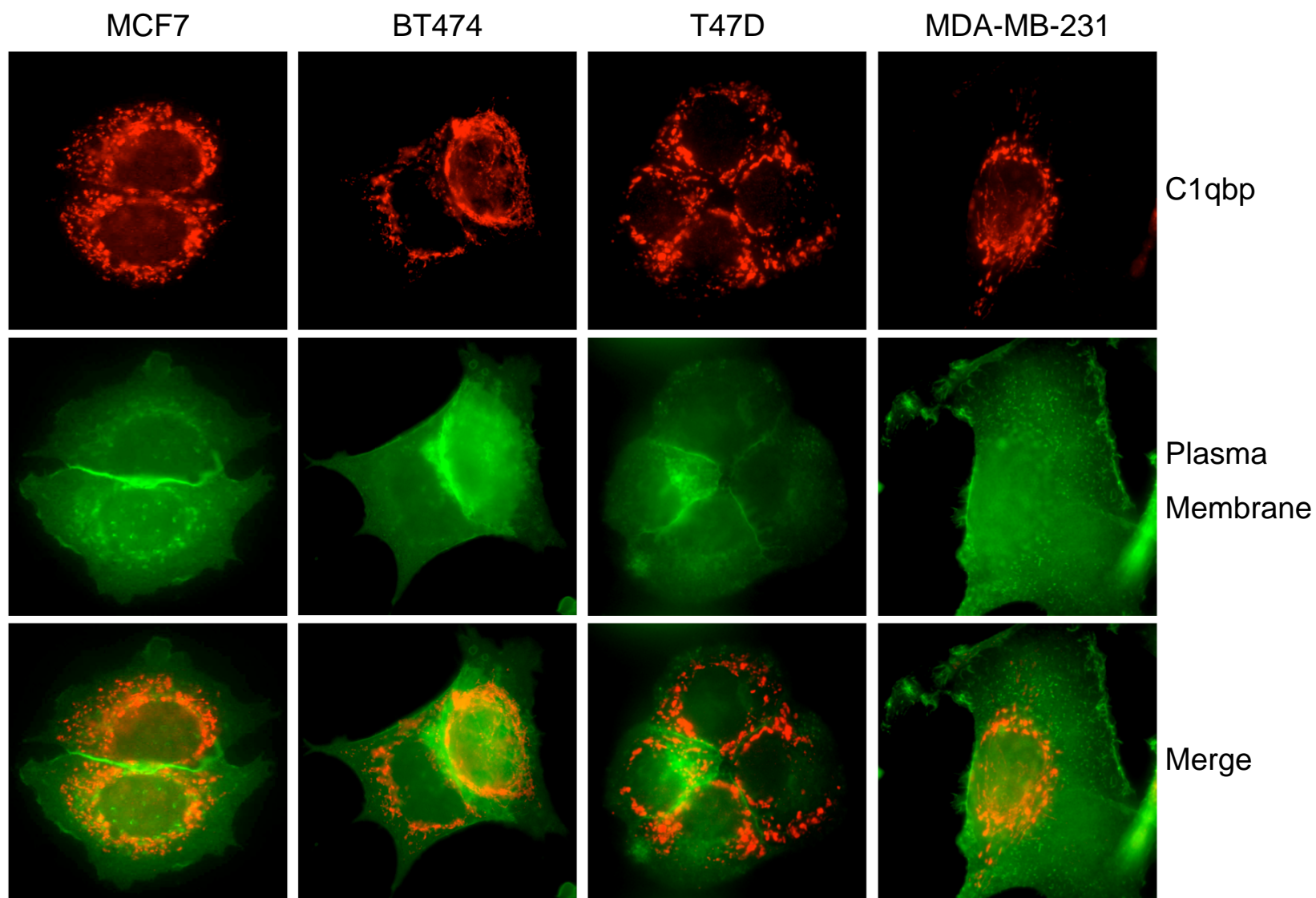


SUPPLEMENTAL FIGURE 1. C1qbp still localizes to mitochondria in human breast cancer cells. Immunocytochemical staining for C1qbp and the mitochondrial protein ATP synthase in the MCF7, BT474, T47D, and MDA-MB-231 breast cancer cell lines. The results shown are representative of 3-4 independent experiments performed in duplicate.

SUPPLEMENTAL FIGURE 2. C1qbp does not localize to the plasma membrane in human breast cancer cells. Immunocytochemical staining for C1qbp and the CellLight™ Plasma Membrane-CFP marker in the MCF7, BT474, T47D, and MDA-MB-231 breast cancer cell lines. The results shown are representative of 3-4 independent experiments performed in duplicate.



Supplemental Figure 1



Supplemental Figure 2