

Supplemental Table 1: Characteristics of ethanol- and pair-fed wild-type and

***Clqa*^{-/-} mice.** Pair-fed n=4, ethanol-fed n=6. No statistical differences were found between genotypes, $p>0.05$.

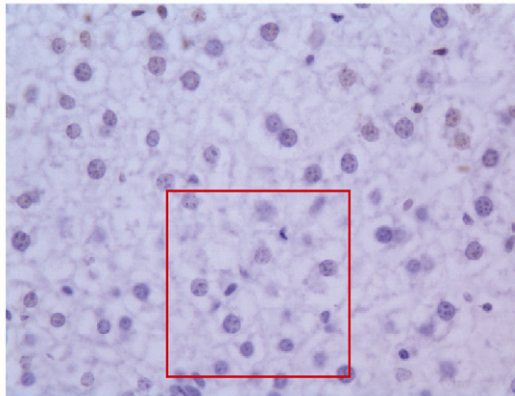
Supplemental Figure 1: TUNEL-positive cells in mouse livers after short-term ethanol

feeding. Wild-type mice were allowed free access to ethanol-containing diets (4d/11% ethanol) or pair-fed control diets. TUNEL-positive nuclei were visualized by immunohistochemistry in formalin-fixed liver sections with peroxidase labelling. Slides were counterstained with hematoxylin. Images are representative of at least 3 mice per group. Areas in the red boxes are enlarged. Red arrows point to cells with macrophage-like morphology that are TUNEL-positive and white arrows point to cells with macrophage-like morphology that are TUNEL-negative.

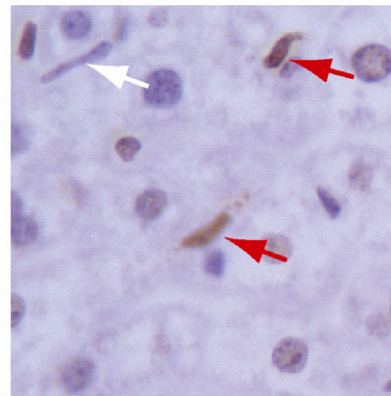
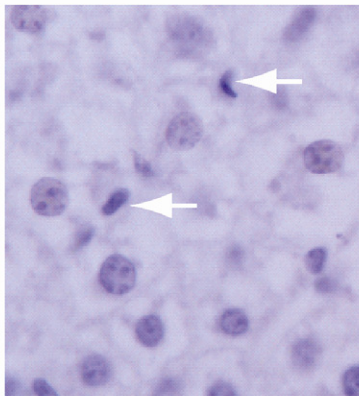
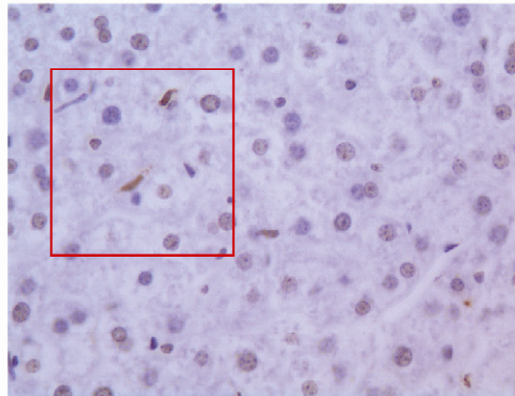
	Wild-type		C1qa ^{-/-}	
	Pair-fed	EtOH-fed	Pair-fed	EtOH-fed
	Short-term (4d/11%)			
Body weight (g)				
Initial	18.8 ± 0.6	18.6 ± 0.3	17.5 ± 1.1	19.3 ± 0.5
Final	20.5 ± 0.3	20.7 ± 0.7	18.9 ± 0.8	20.6 ± 0.8
Average daily food intake (ml/cage)	Pair-fed	29.5 ± 1.4	Pair-fed	27.0 ± 2.9
	Chronic ethanol (25d/32%)			
Body weight (g)				
Initial	17.6 ± 0.3	18.6 ± 0.6	16.7 ± 0.5	17.5 ± 0.5
Final	22.5 ± 1.2	22.4 ± 1.1	21.4 ± 0.5	20.1 ± 0.6
Average daily food intake (ml/cage)	Pair-fed	18.9 ± 0.5	Pair-fed	18.9 ± 1.0
	Acute Gavage			
Plasma EtOH (mM)	nd	104.7 ± 5.1	nd	99.0 ± 12.3

Supplemental Figure 1

Pair-fed



EtOH-fed (4d/11%)



ACQ