

Supplementary figure 5

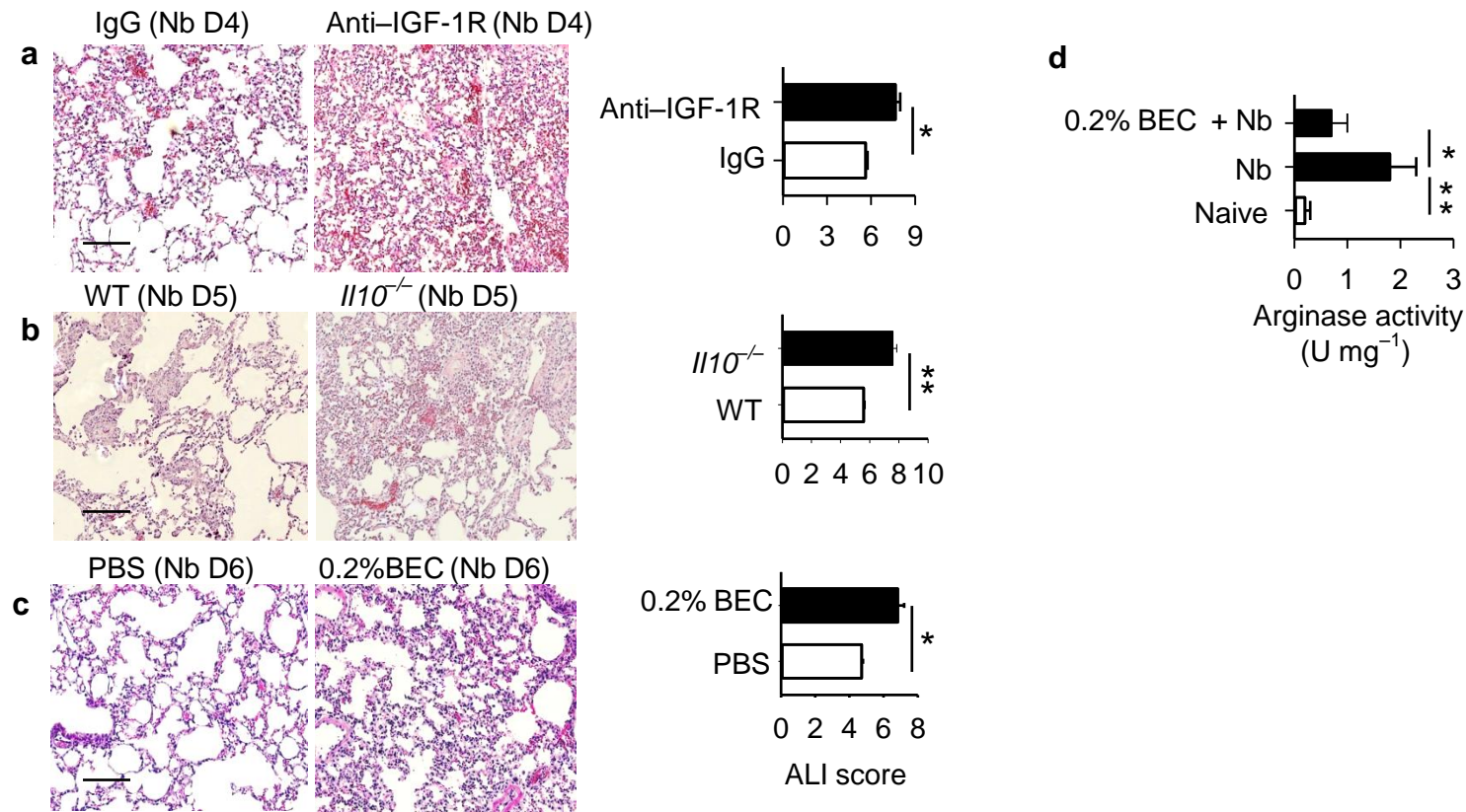


Figure 5s. Lung damage as assessed by histology and BEC inhibition of arginase activity. (a–c) H&E staining of lung tissue sections and acute lung injury (ALI) scoring in: (a) *N. brasiliensis* (*Nb*)-inoculated mice treated with IGF-1R-specific antibody or isotype control; (b) *Nb*-inoculated *Il10*^{-/-} or WT mice; (c) *Nb*-inoculated mice administered BEC or PBS vehicle. Stained lung tissue sections are representative examples of results from five mice/group (Scale bar, 50 μ m) and ALI scores are expressed as the mean and SEM of five mice/group. (d) Arginase bioactivity in lung tissue was determined in *Nb*-inoculated mice administered BEC as described in the Methods. Data are expressed as the mean and SEM of four animals/treatment group. All experiments were repeated twice with similar results.