

Regioselective Synthesis of Water Soluble Monophosphate Derivatives of Combretastatin A-1

Rajendra P. Tanpure^{†∇}, Benson L. Nguyen^{†∇}, Tracy E. Strecker[†], Savannah Aguirre[†], Suman Sharma[‡], David J. Chaplin[‡], Bronwyn G. Siim[‡], Ernest Hamel[§], John W. Lippert III[⊥], George R. Pettit[⊥], Mary Lynn Trawick[†], and Kevin G. Pinney^{†*}

[†]Department of Chemistry and Biochemistry, Baylor University, One Bear Place #97348, Waco, Texas 76798-7348, USA

[‡]OXiGENE Inc., 701 Gateway Blvd., Suite 210, South San Francisco, CA 94080, USA

[§]Screening Technologies Branch, Developmental Therapeutics Program, Division of Cancer Treatment and Diagnosis, National Cancer Institute at Frederick, National Institutes of Health, Frederick, MD 21702, USA

[⊥]Albany Molecular Research Inc., Medicinal Chemistry, 26 Corporate Circle, PO Box 15098, Albany, NY 12212-5098, USA (current address)

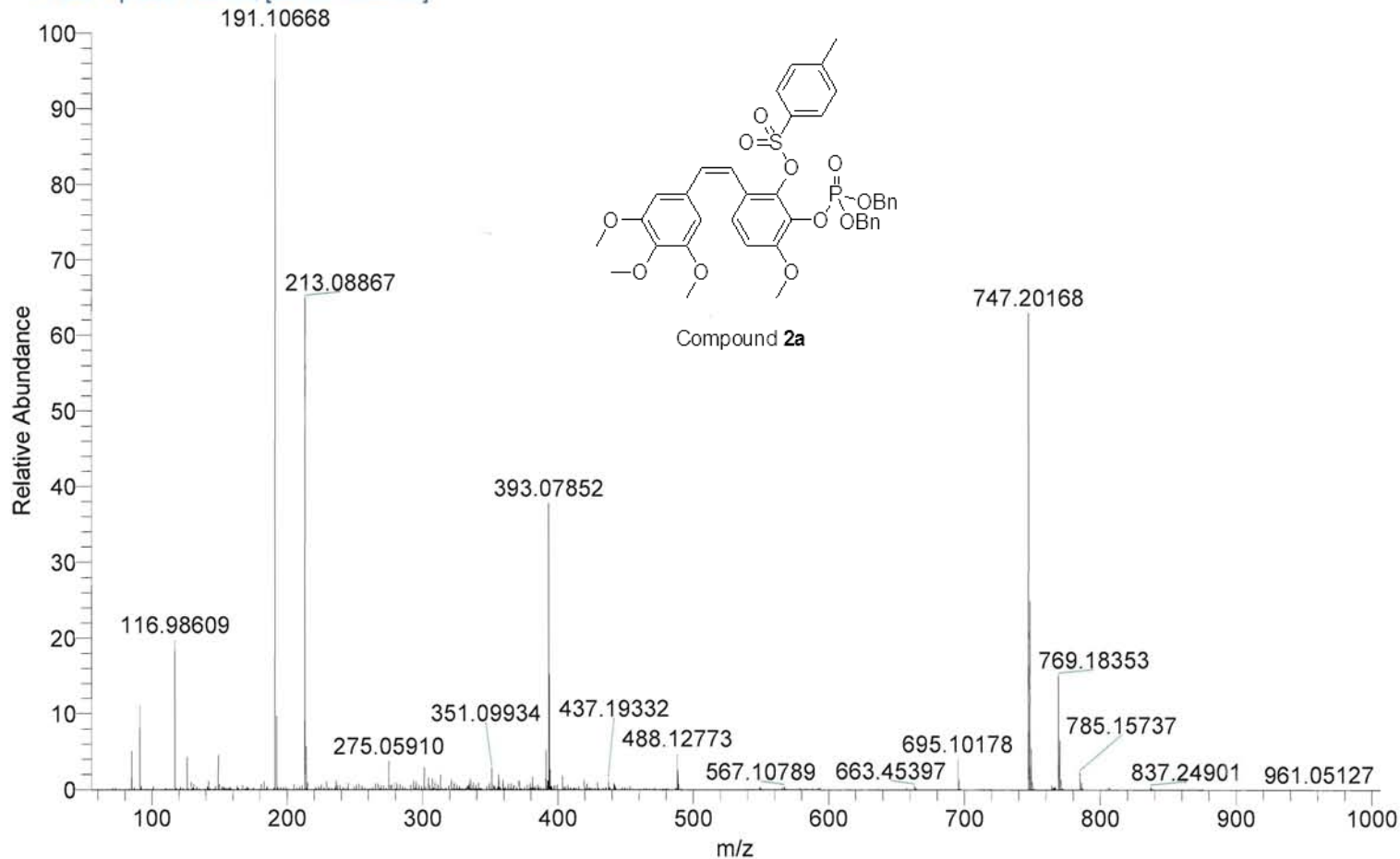
[⊥]Cancer Research Institute and Department of Chemistry and Biochemistry, Arizona State University, P.O. Box 871604, Tempe, Arizona 85287-1604, USA

[∇]Authors with equal contributions.

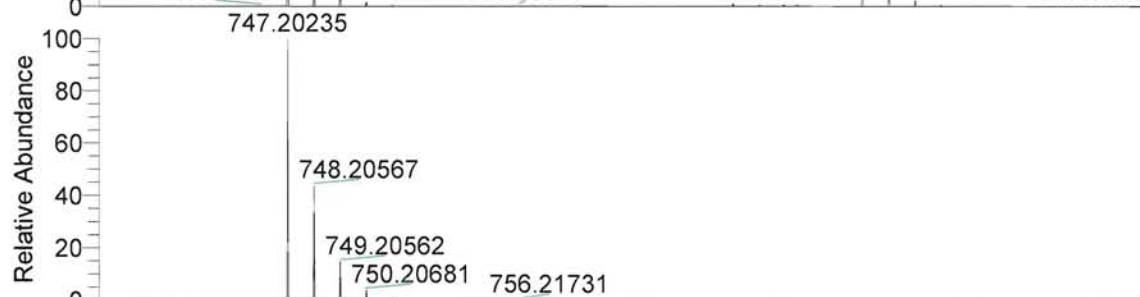
Table of Contents

- 1) HRMS Spectra for compounds **2a,b-4a,b** and **6a,b-8a,b**. Pages S2'-S13'

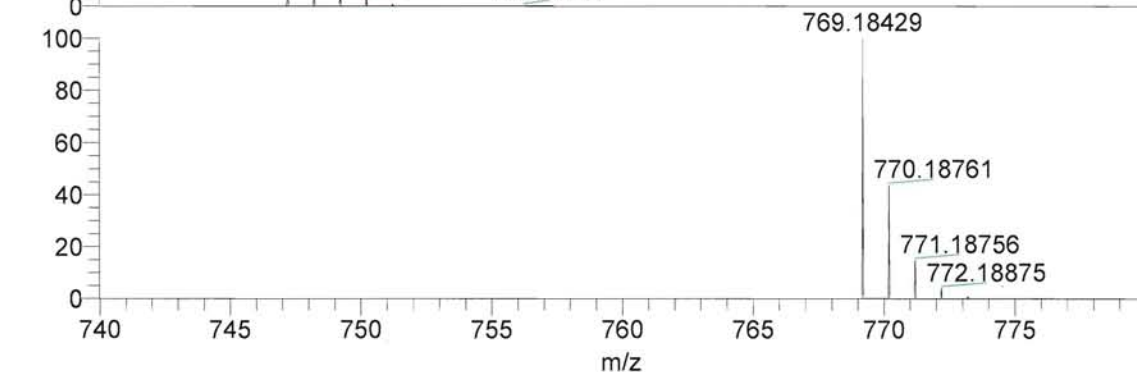
RT-5-23_fs_Orbi_+ESI #1-20 RT: 0.00-0.16 AV: 20 NL: 8.76E6
T: FTMS + p ESI Full ms [55.00-1000.00]



NL:
5.52E6
RT-5-23_fs_Orbi_+ESI#1-20
RT: 0.00-0.16 AV: 20 T:
FTMS + p ESI Full ms
[55.00-1000.00]

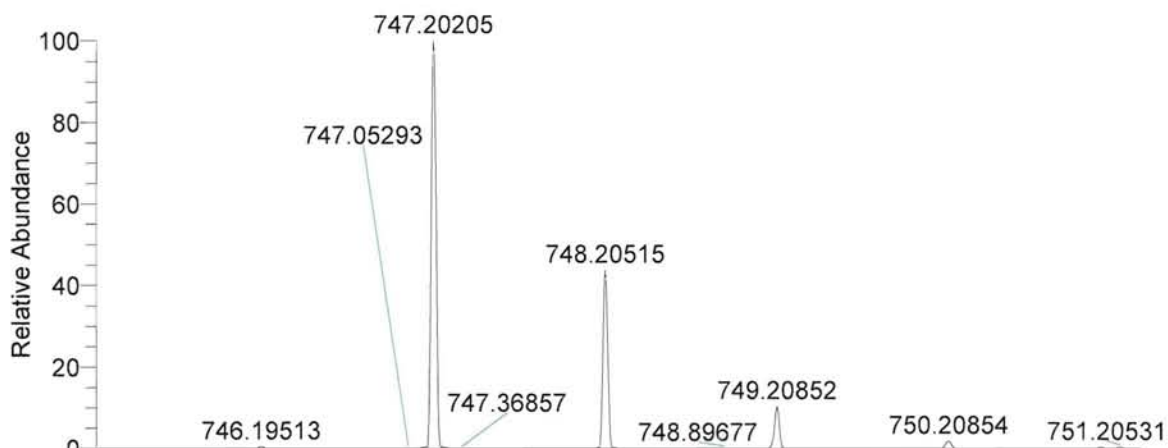
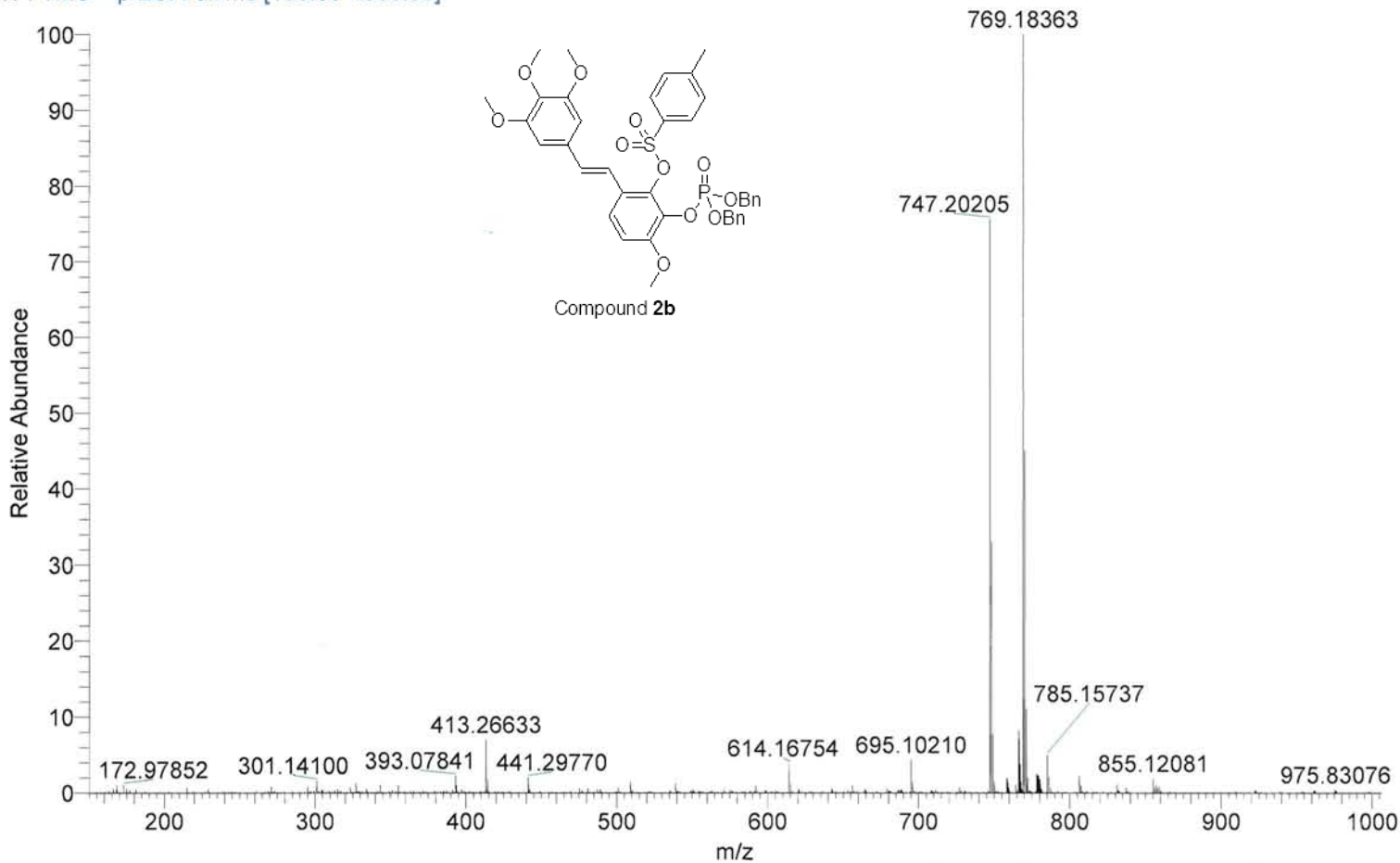


NL:
1.42E4
C₃₉ H₃₉ O₁₁ PS +H:
C₃₉ H₄₀ O₁₁ P₁ S₁
p (gss, s /p:40) Chrg 1
R: 30000 Res .Pwr . @FWHM

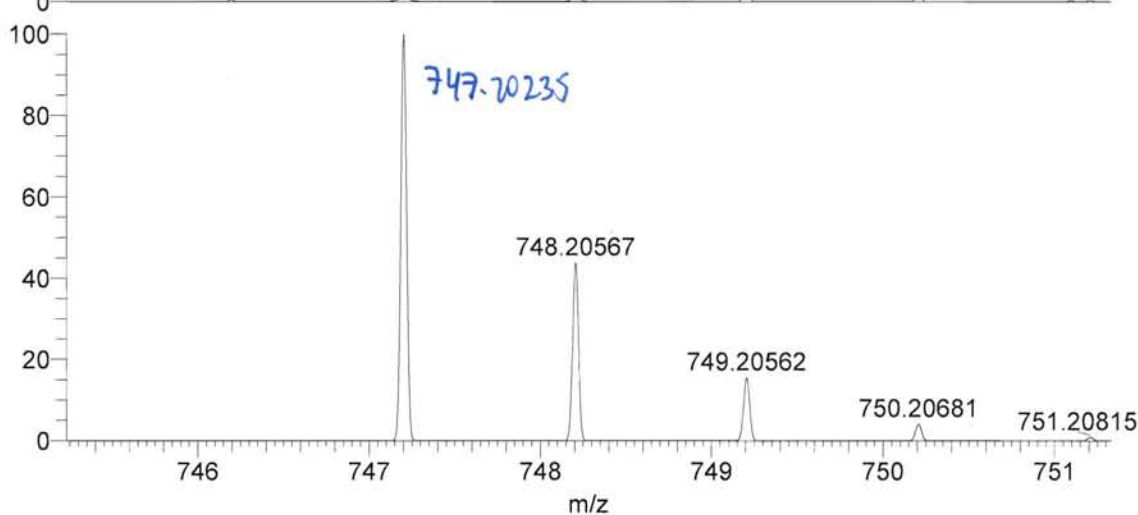


NL:
1.42E4
C₃₉ H₃₉ O₁₁ PS +Na:
C₃₉ H₃₉ O₁₁ P₁ S₁ Na₁
p (gss, s /p:40) Chrg 1
R: 30000 Res .Pwr . @FWHM

RT-4-103_fs_Orbi_+ESI #1-20 RT: 0.00-0.16 AV: 20 NL: 2.80E7
T: FTMS + p ESI Full ms [150.00-1000.00]

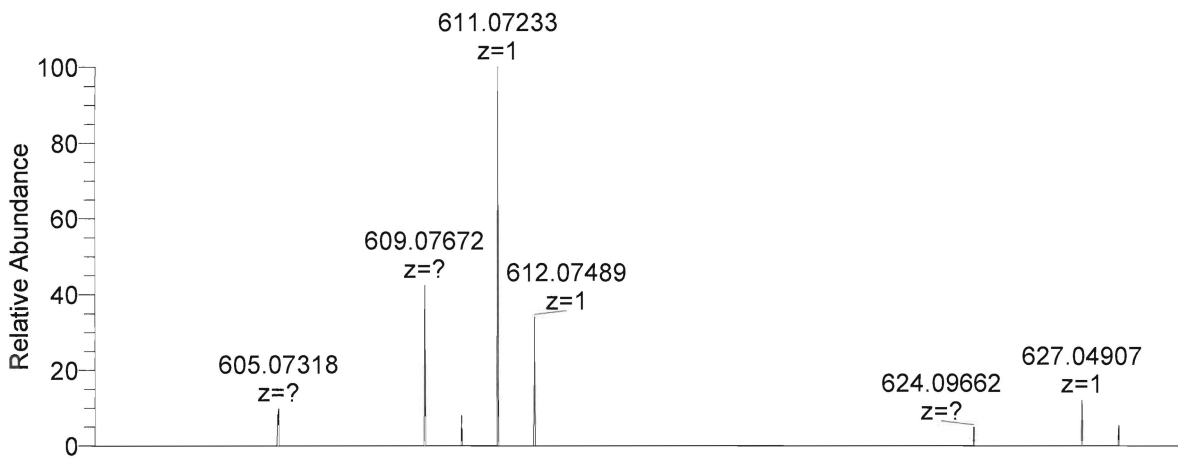
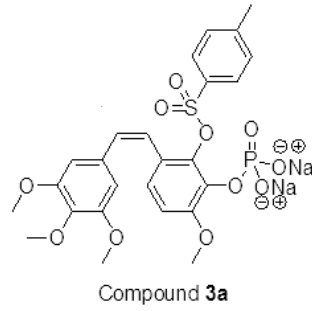
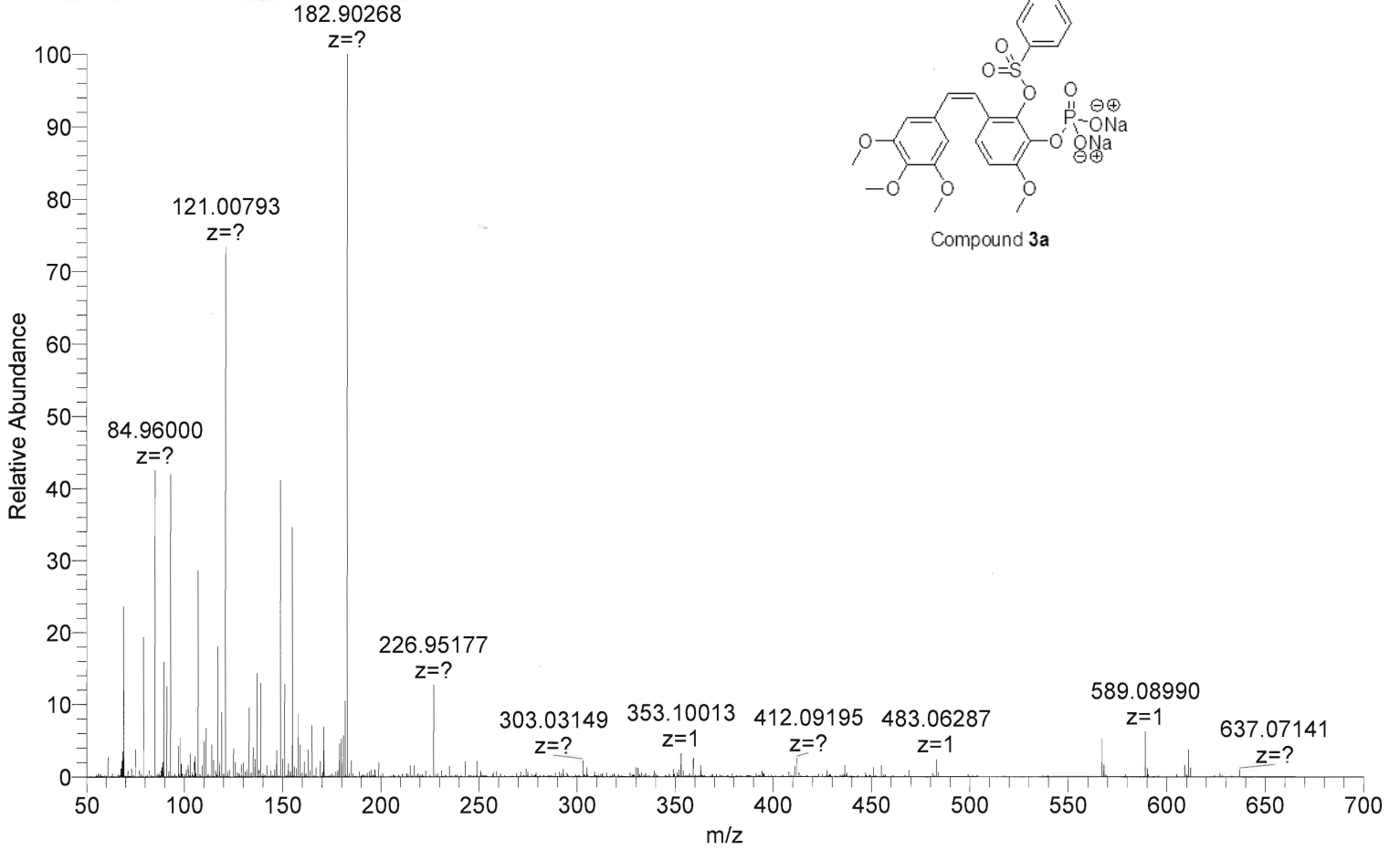


NL:
2.12E7
RT-4-103_fs_Orbi_+ESI#1-20
RT: 0.00-0.16 AV: 20 T:
FTMS + p ESI Full ms
[150.00-1000.00]

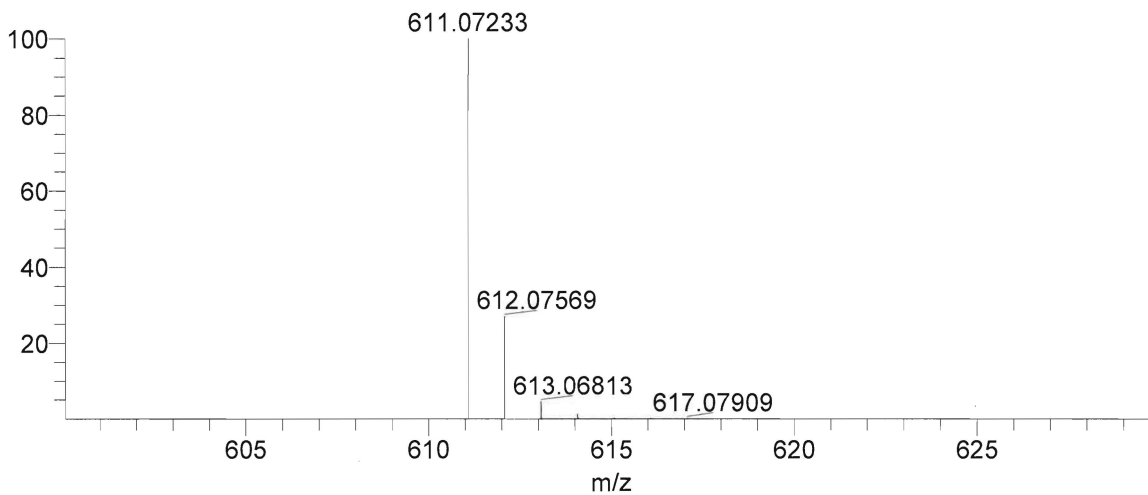


NL:
1.42E4
C₃₉ H₃₉ O₁₁ PS +H:
C₃₉ H₄₀ O₁₁ P₁ S₁
p (gss, s /p:40) Chrg 1
R: 20000 Res .Pwr . @FWHM

RT-5-13-2 (2)_Orbi_+ESI #20 RT: 0.18 AV: 1 NL: 2.03E6
 T: FTMS + p ESI Full ms [50.00-700.00]

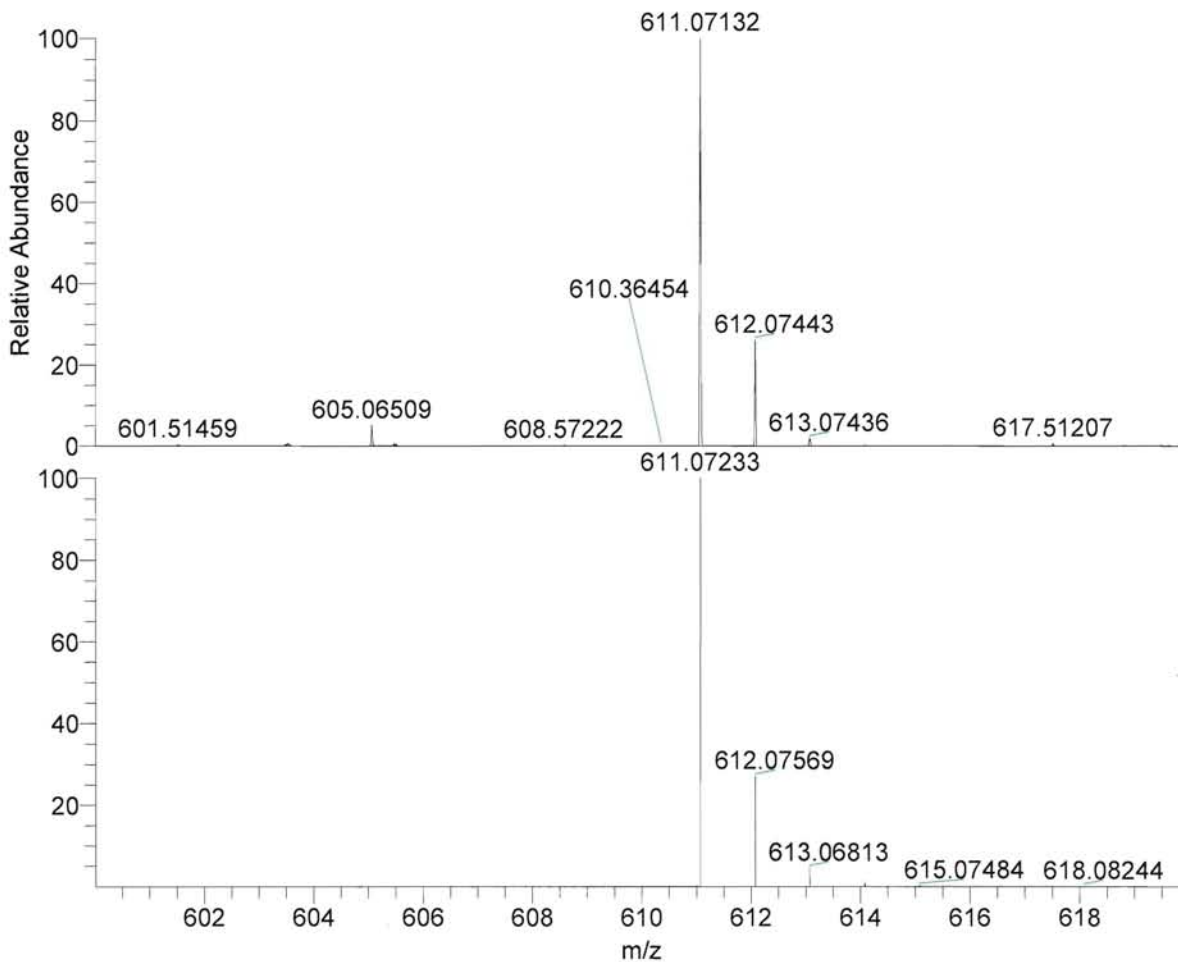
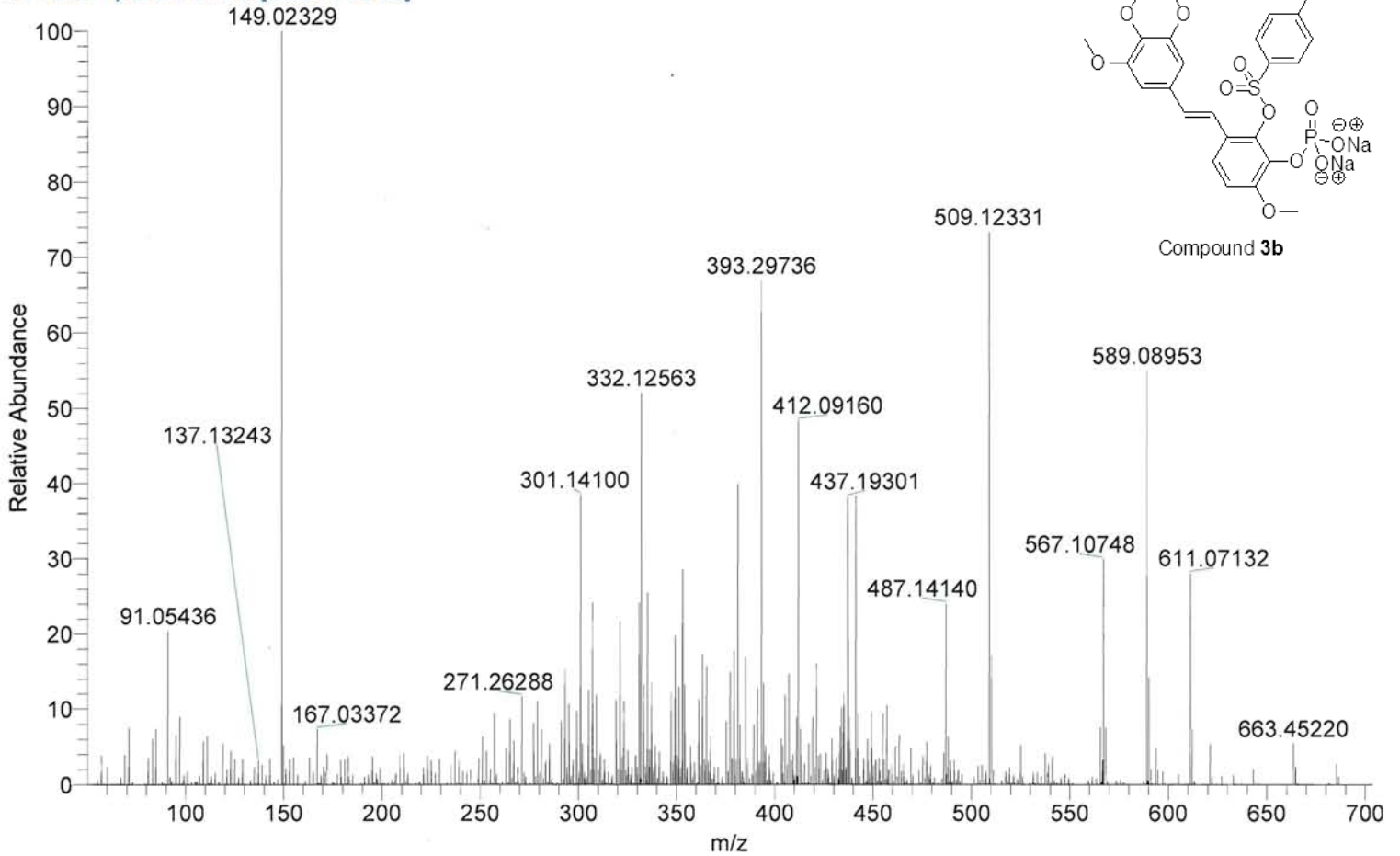
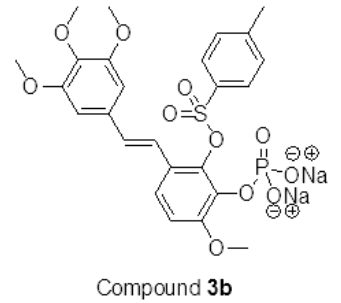


NL:
 7.70E4
 RT-5-13-2
 (2)_Orbi_+ESI#20 RT:
 0.18 AV: 1 T: FTMS + p
 ESI Full ms
 [50.00-700.00]



NL:
 7.04E5
 C₂₅ H₂₅ Na₂ O₁₁ PS +H:
 C₂₅ H₂₆ Na₂ O₁₁ P₁ S₁
 pa Chr 1

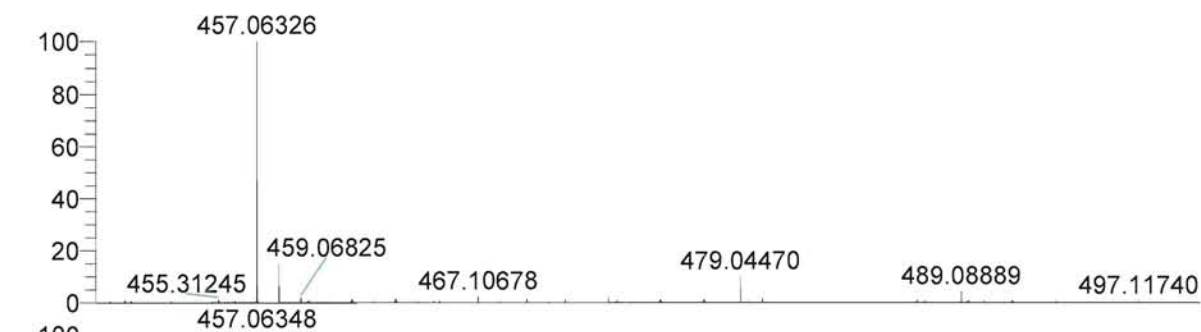
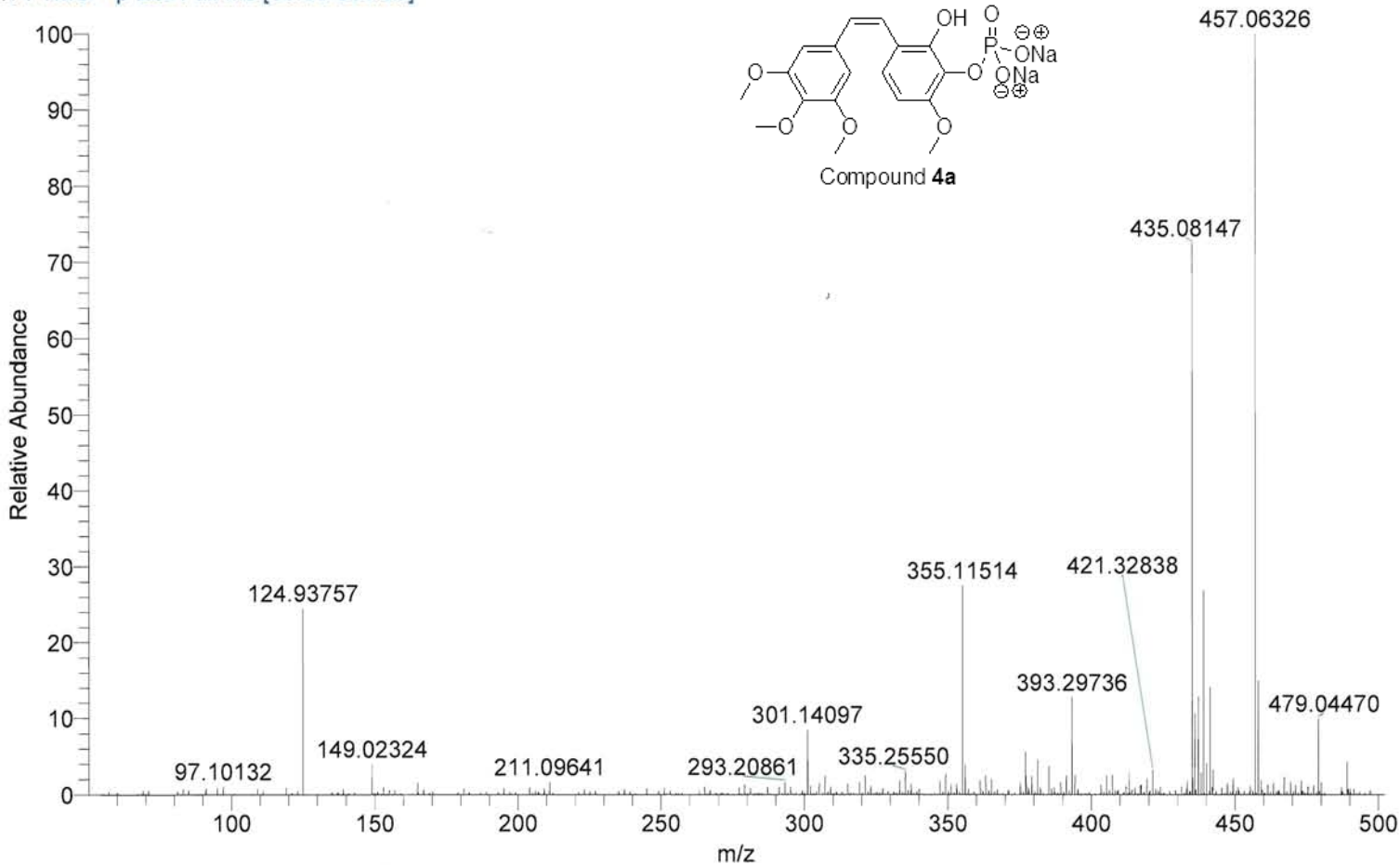
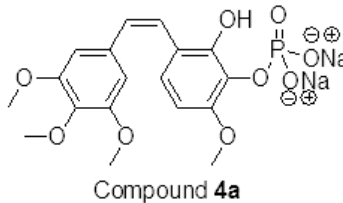
RT-5-7_Orbi_+ESI #2-20 RT: 0.01-0.17 AV: 19 NL: 8.81E5
 T: FTMS + p ESI Full ms [50.00-700.00]



NL:
 2.47E5
 RT-5-7_Orbi_+ESI#2-20
 RT: 0.01-0.17 AV: 19 T:
 FTMS + p ESI Full ms
 [50.00-700.00]

NL:
 7.04E5
 C₂₅ H₂₅ Na₂ O₁₁ PS +H:
 C₂₅ H₂₆ Na₂ O₁₁ P₁ S₁
 pa Chrg 1

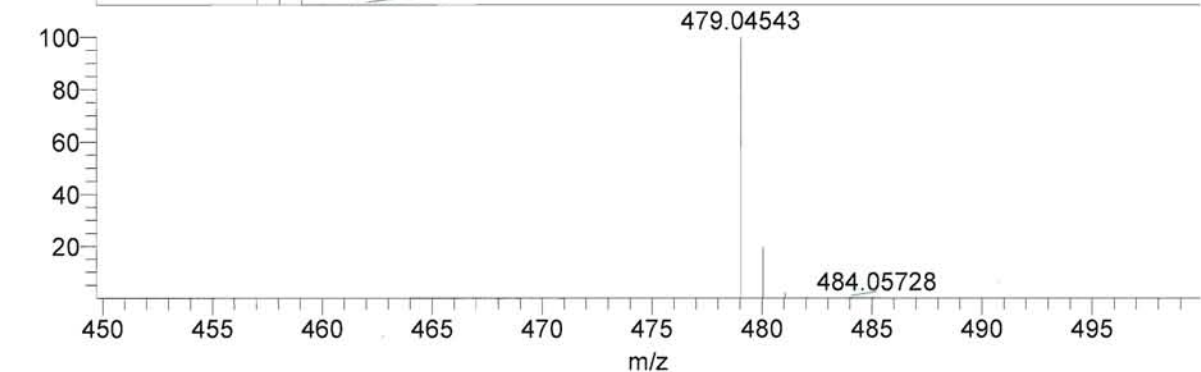
RT-5-44_Orbi_+ESI #1-19 RT: 0.01-0.16 AV: 19 NL: 5.04E6
 T: FTMS + p ESI Full ms [50.00-500.00]



NL:
 5.04E6
 RT-5-44_Orbi_+
 ESI#1-19 RT: 0.01-0.16
 AV: 19 T: FTMS + p ESI
 Full ms [50.00-500.00]

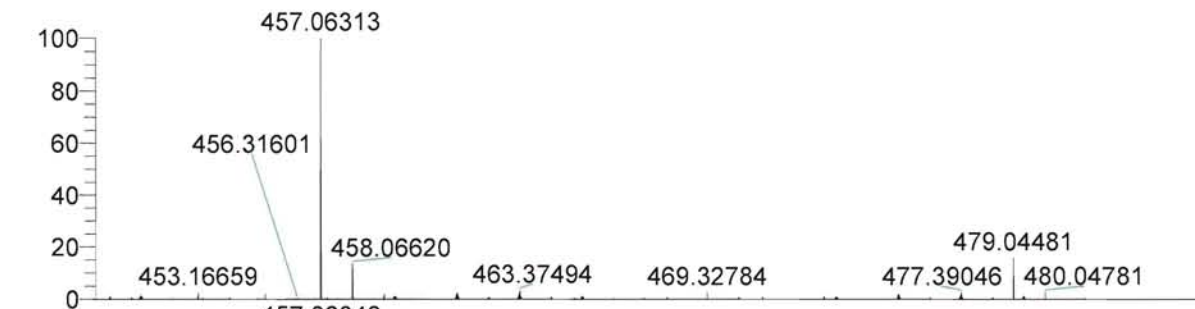
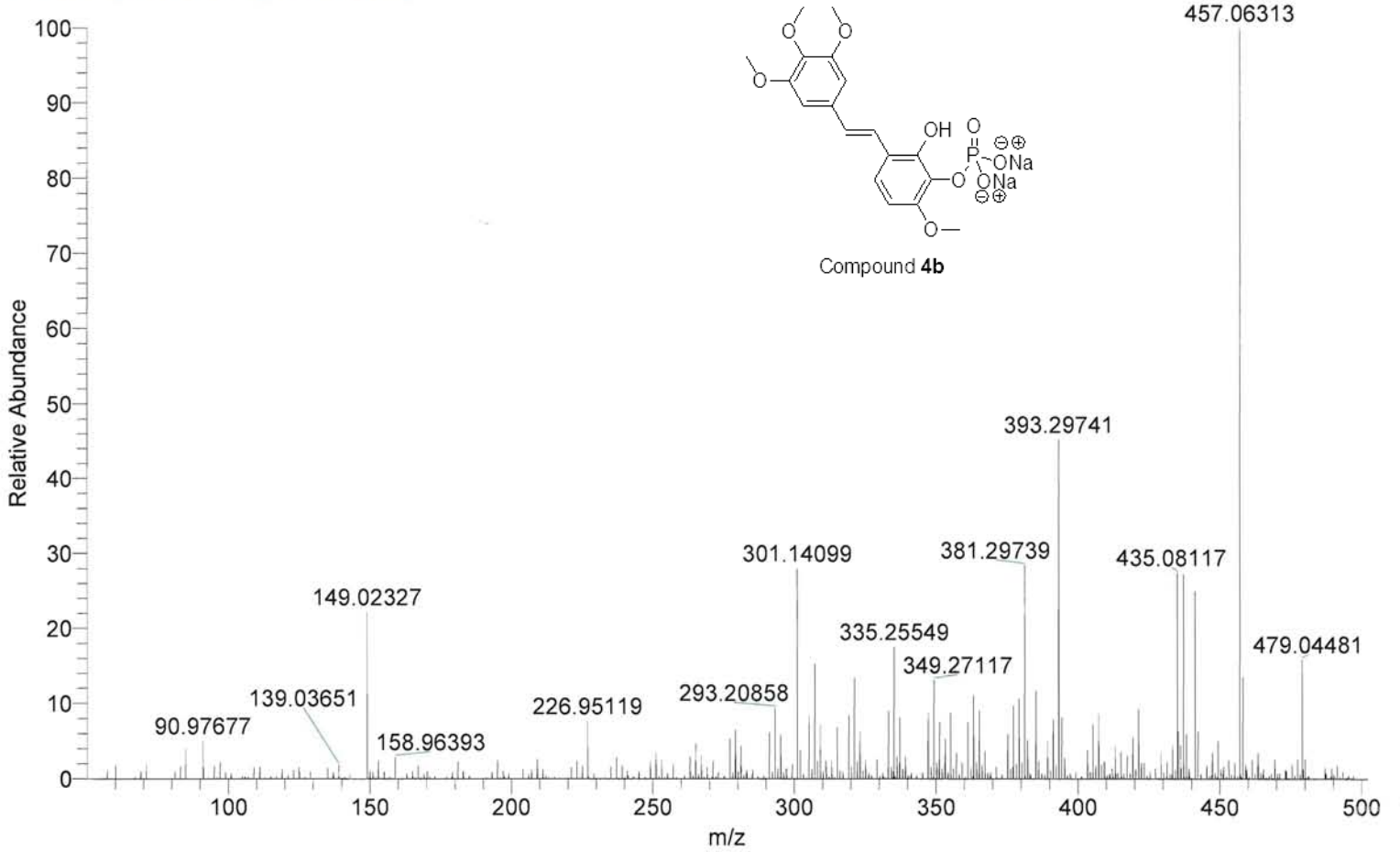
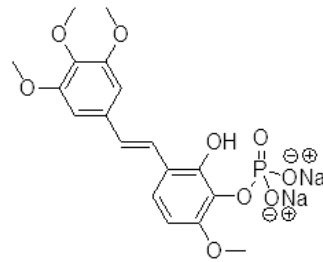


NL:
 8.04E5
 C₁₈ H₁₉ Na₂ O₉ P +H:
 C₁₈ H₂₀ Na₂ O₉ P₁
 pa Chrg 1



NL:
 8.04E5
 C₁₈ H₁₉ Na₂ O₉ P +Na:
 C₁₈ H₁₉ Na₃ O₉ P₁
 pa Chrg 1

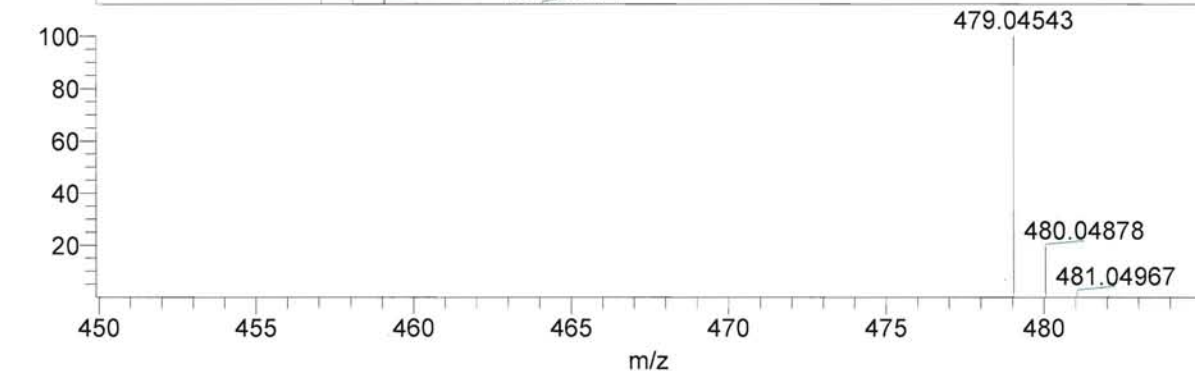
RT-5-21_Orbi_+ESI #1-19 RT: 0.01-0.16 AV: 19 NL: 1.92E6
 T: FTMS + p ESI Full ms [50.00-500.00]



NL:
 1.92E6
 RT-5-21_Orbi_+
 ESI#1-19 RT: 0.01-0.16
 AV: 19 T: FTMS + p ESI
 Full ms [50.00-500.00]

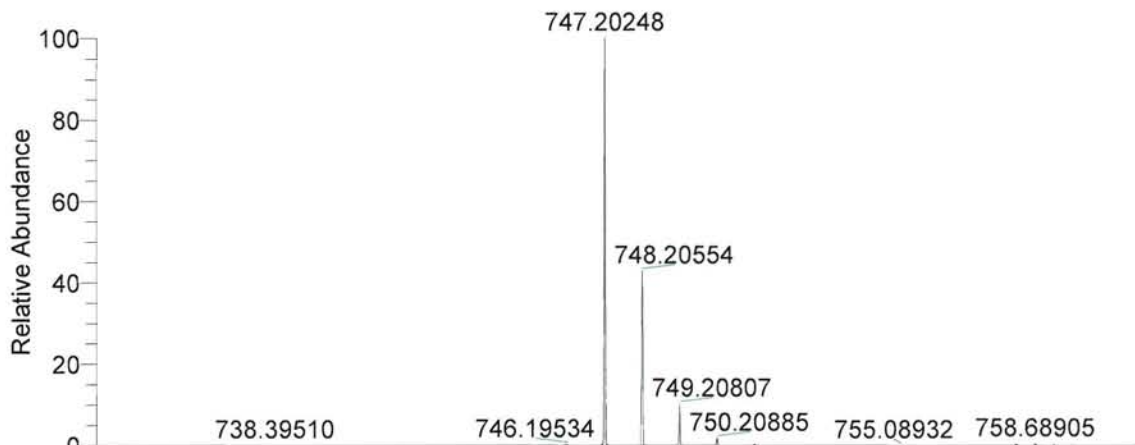
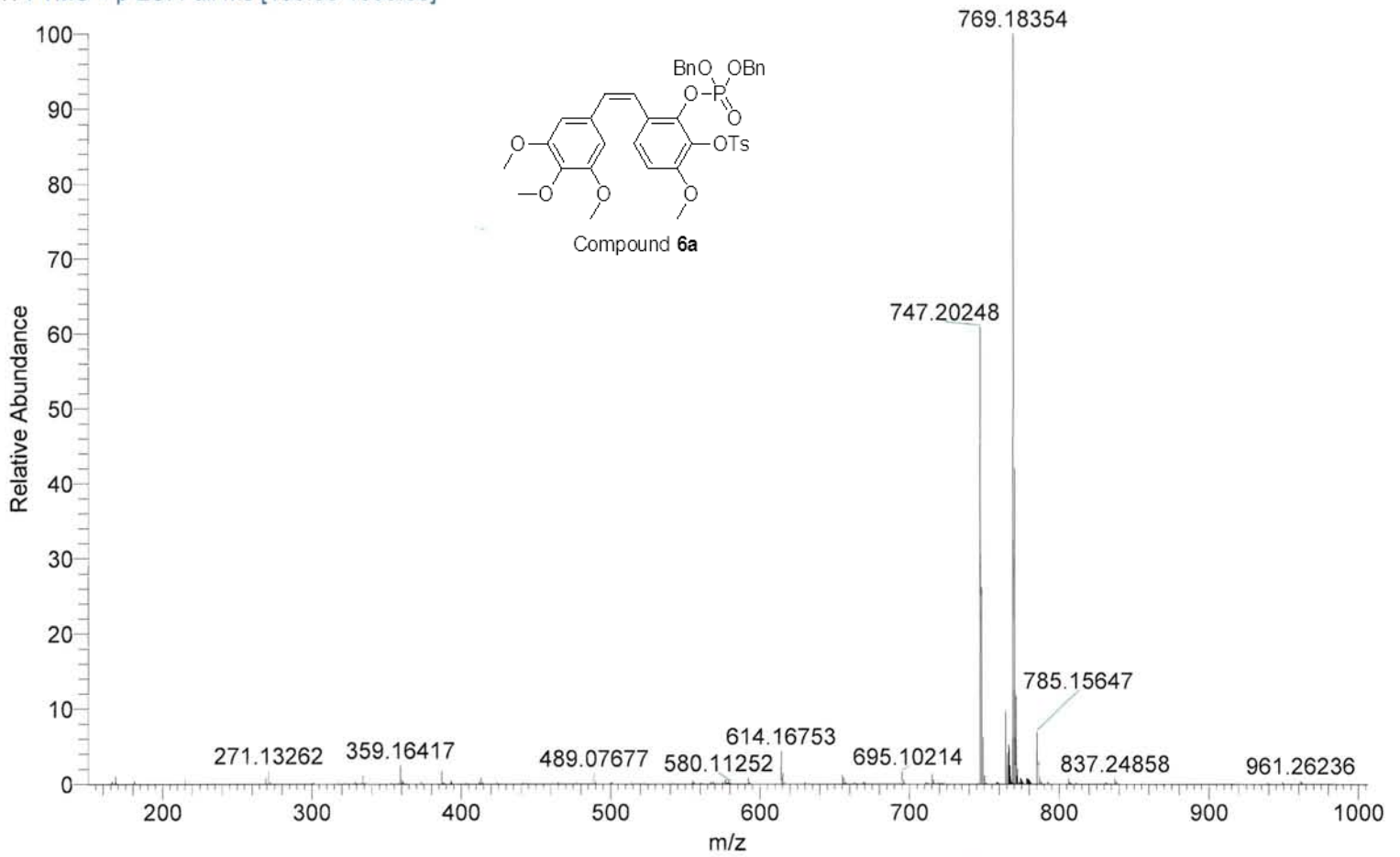


NL:
 8.04E5
 $C_{18}H_{19}Na_2O_9P + H$
 $C_{18}H_{20}Na_2O_9P_1$
 pa Chrg 1

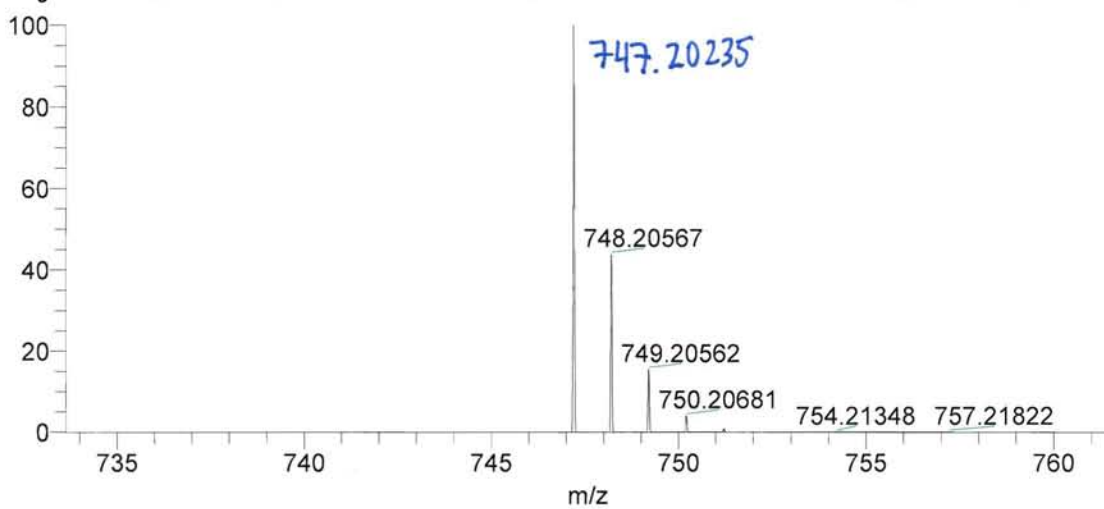


NL:
 8.04E5
 $C_{18}H_{19}Na_2O_9P + Na$
 $C_{18}H_{19}Na_3O_9P_1$
 pa Chrg 1

RT-5-2(1)_fs_Orbi_+ESI #2-16 RT: 0.01-0.12 AV: 15 NL: 2.07E8
 T: FTMS + p ESI Full ms [150.00-1000.00]

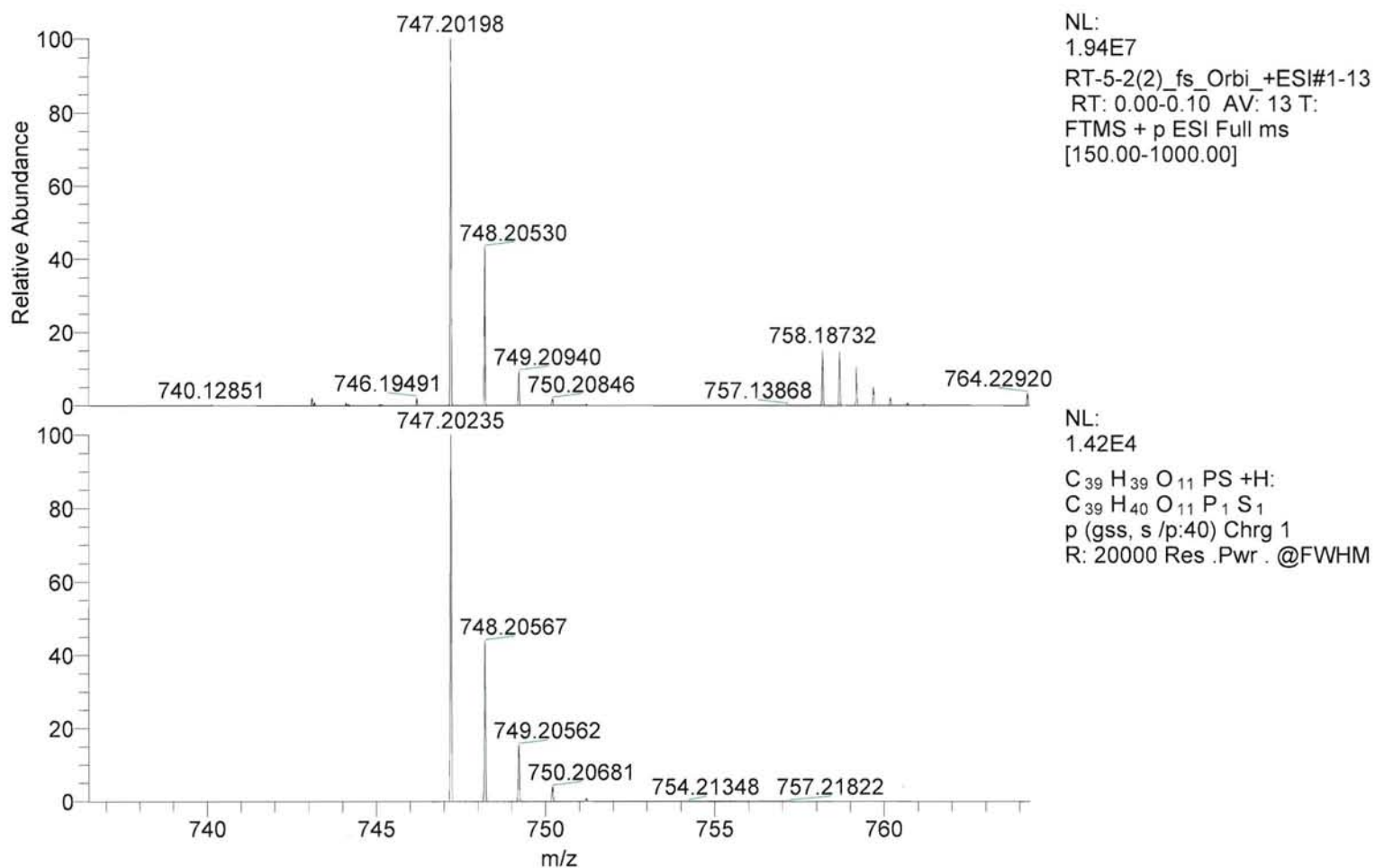
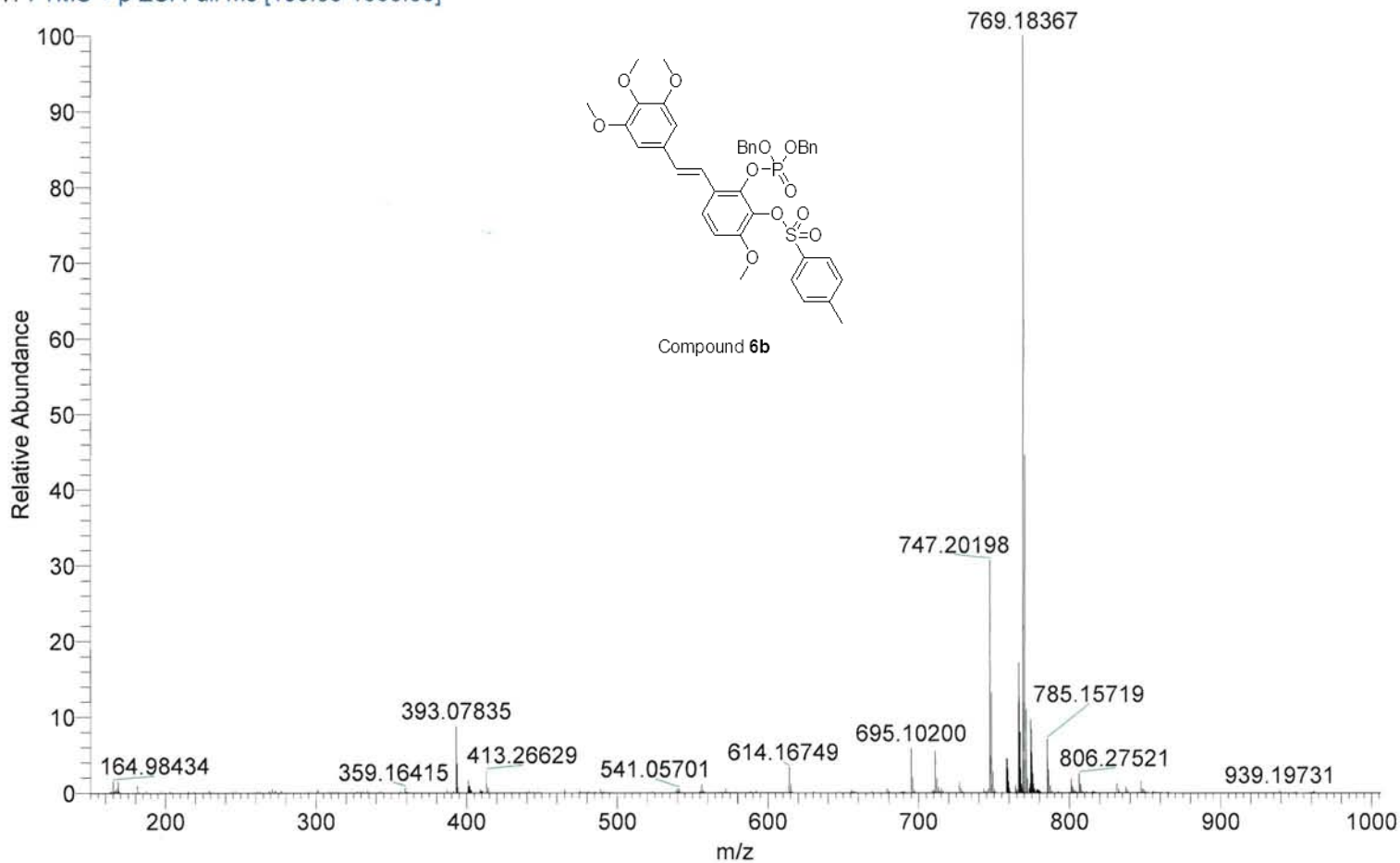


NL: 1.26E8
 RT-5-2(1)_fs_Orbi_+ESI#2-16
 RT: 0.01-0.12 AV: 15 T:
 FTMS + p ESI Full ms
 [150.00-1000.00]

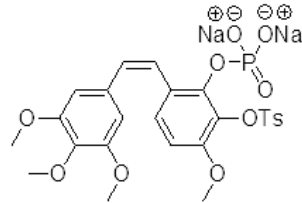


NL: 1.42E4
 C₃₉ H₃₉ O₁₁ PS +H:
 C₃₉ H₄₀ O₁₁ P₁ S₁
 p (gss, s /p:40) Chrg 1
 R: 20000 Res .Pwr . @FWHM

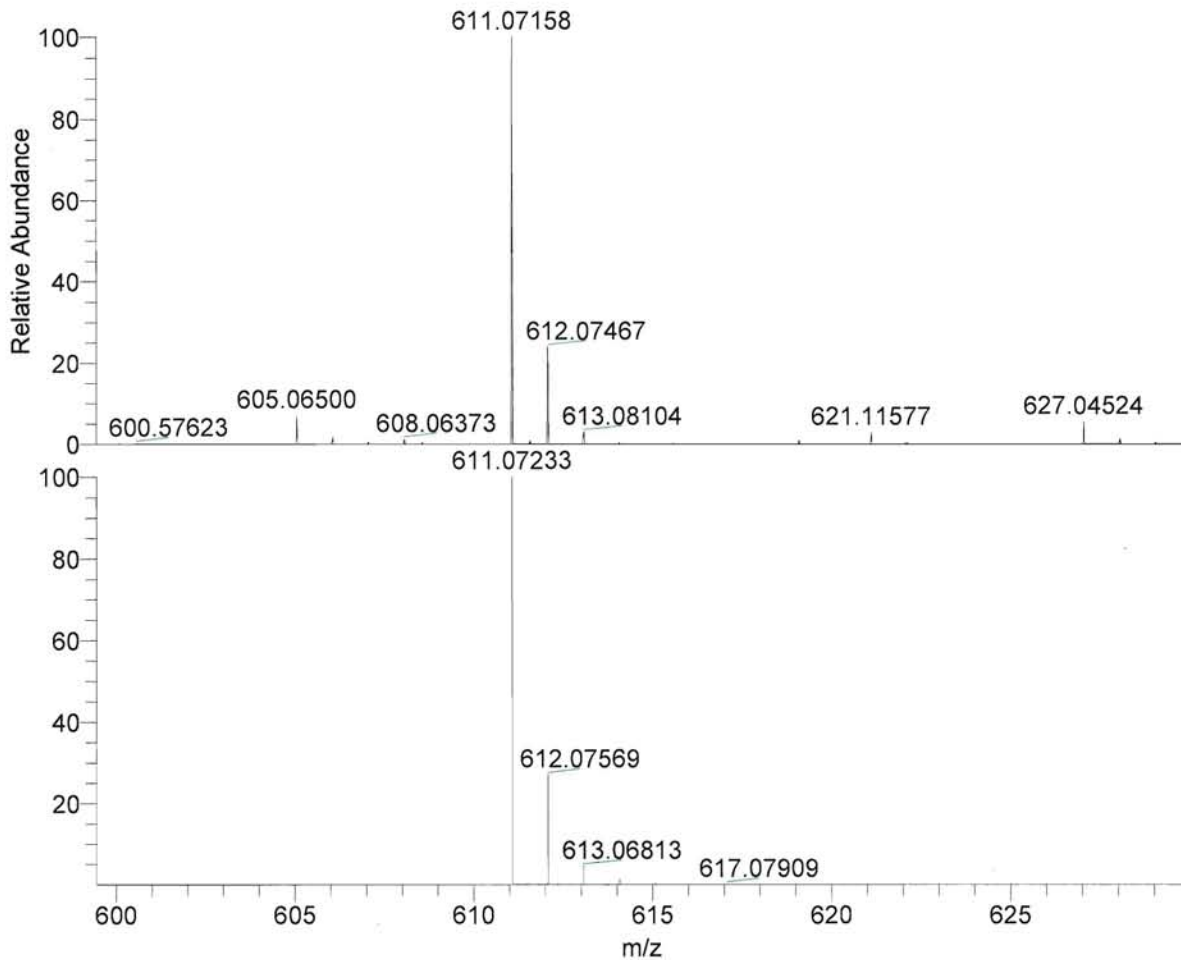
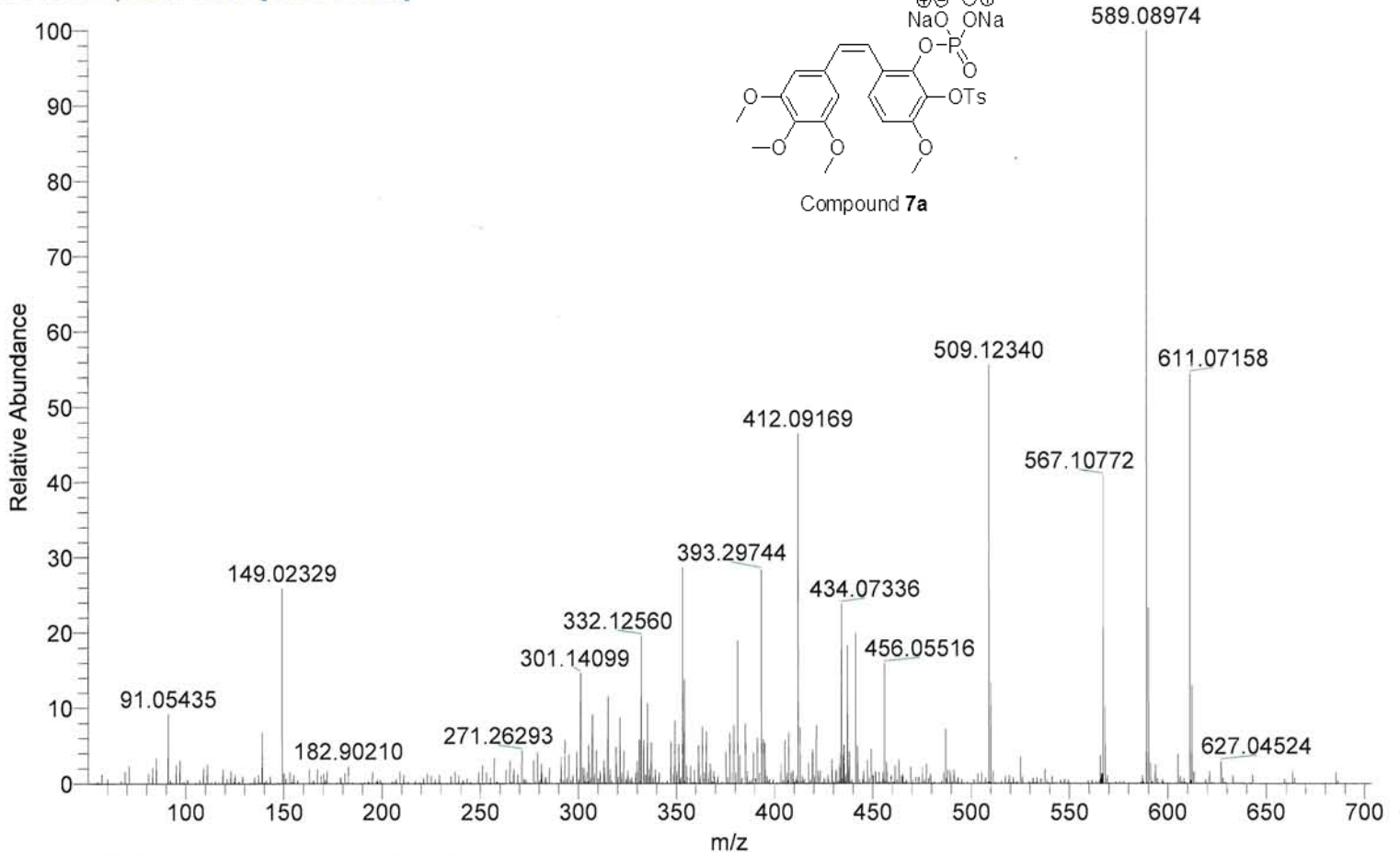
RT-5-2(2)_fs_Orbi_+ESI #1-13 RT: 0.00-0.10 AV: 13 NL: 6.30E7
 T: FTMS + p ESI Full ms [150.00-1000.00]



RT-5-9-2_Orbi_+ESI #1-20 RT: 0.00-0.17 AV: 20 NL: 1.75E6
 T: FTMS + p ESI Full ms [50.00-700.00]



Compound 7a

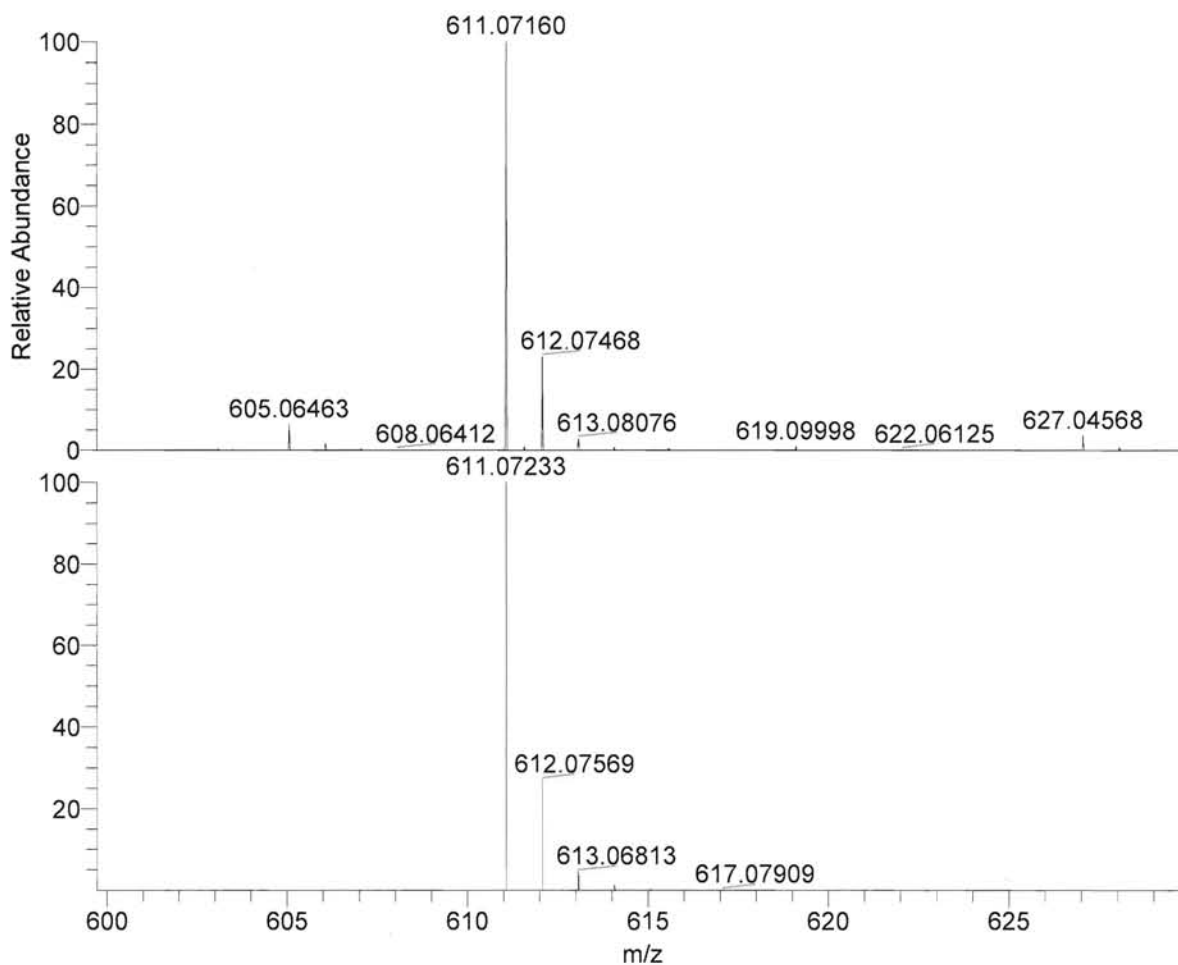
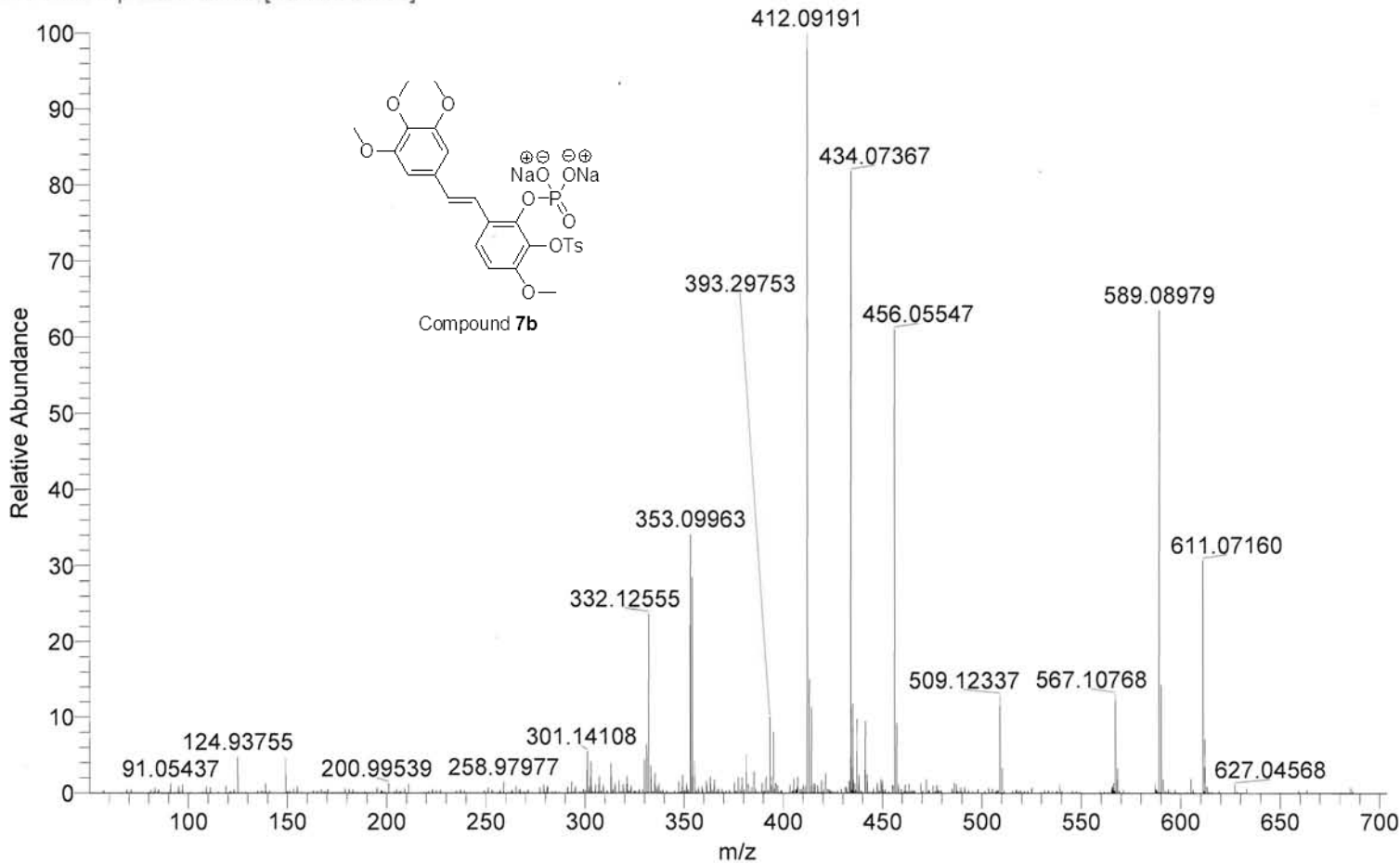


NL:
 9.55E5
 RT-5-9-2_Orbi_+
 ESI#1-20 RT: 0.00-0.17
 AV: 20 T: FTMS + p ESI
 Full ms [50.00-700.00]

NL:
 7.04E5
 C₂₅ H₂₅ Na₂ O₁₁ PS +H:
 C₂₅ H₂₆ Na₂ O₁₁ P₁ S₁
 pa Chrg 1

RT-5-8_Orbi_+ESI #1-20 RT: 0.00-0.17 AV: 20 NL: 3.86E6

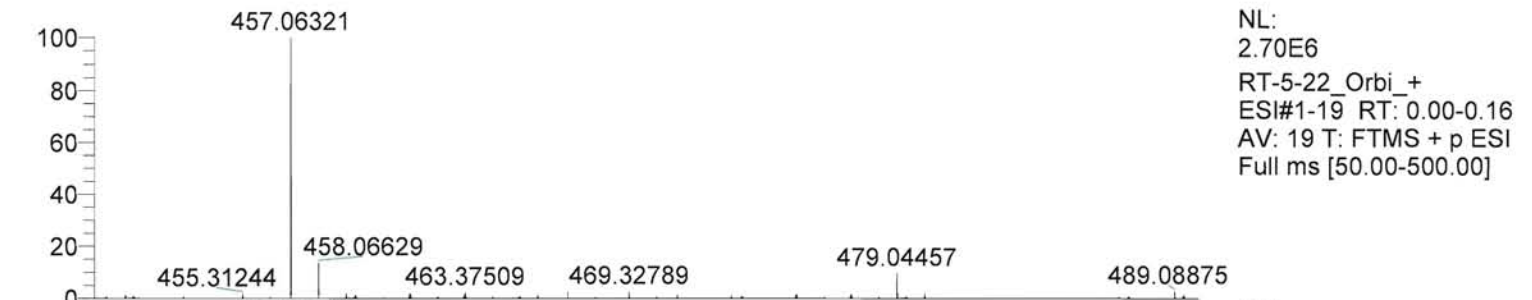
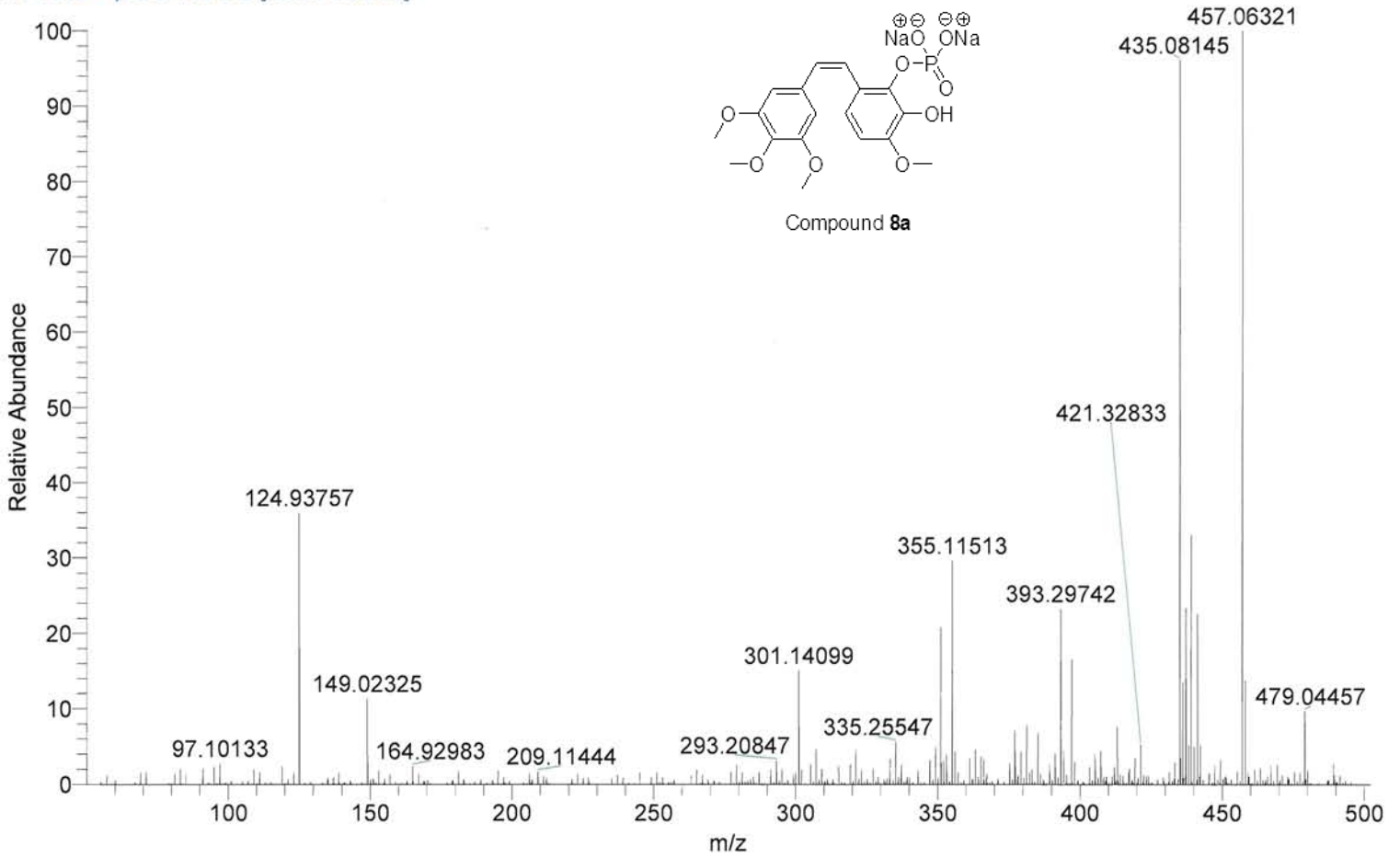
T: FTMS + p ESI Full ms [50.00-700.00]



NL:
1.18E6
RT-5-8_Orbi_+ESI#1-20
RT: 0.00-0.17 AV: 20 T:
FTMS + p ESI Full ms
[50.00-700.00]

NL:
7.04E5
C₂₅ H₂₅ Na₂ O₁₁ PS +H:
C₂₅ H₂₆ Na₂ O₁₁ P₁ S₁
pa Chrg 1

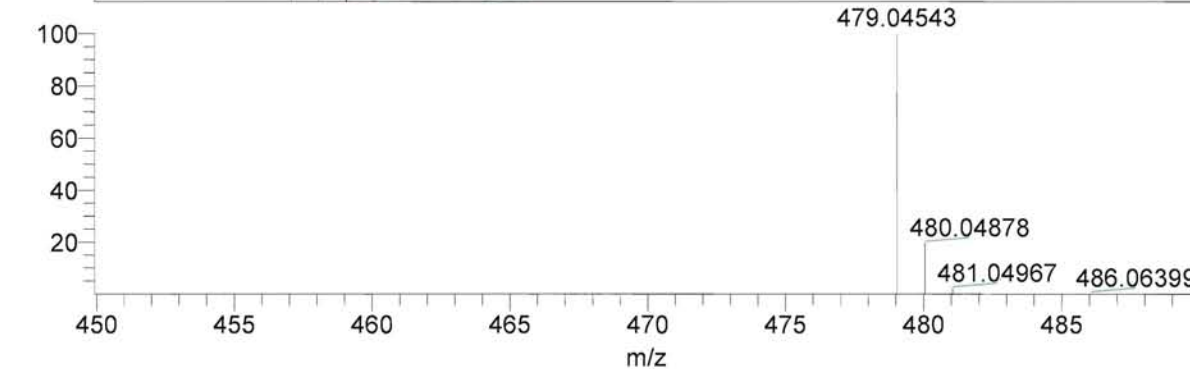
RT-5-22_Orbi_+ESI #1-19 RT: 0.00-0.16 AV: 19 NL: 2.70E6
 T: FTMS + p ESI Full ms [50.00-500.00]



NL:
 2.70E6
 RT-5-22_Orbi_+
 ESI#1-19 RT: 0.00-0.16
 AV: 19 T: FTMS + p ESI
 Full ms [50.00-500.00]



NL:
 8.04E5
 $C_{18}H_{19}Na_2O_9P+H$:
 $C_{18}H_{20}Na_2O_9P_1$
 pa Chrg 1



NL:
 8.04E5
 $C_{18}H_{19}Na_2O_9P+Na$:
 $C_{18}H_{19}Na_3O_9P_1$
 pa Chrg 1

RT-5-20_Orbi_+ESI #1-19 RT: 0.00-0.17 AV: 19 NL: 2.89E6
T: FTMS + p ESI Full ms [50.00-500.00]

