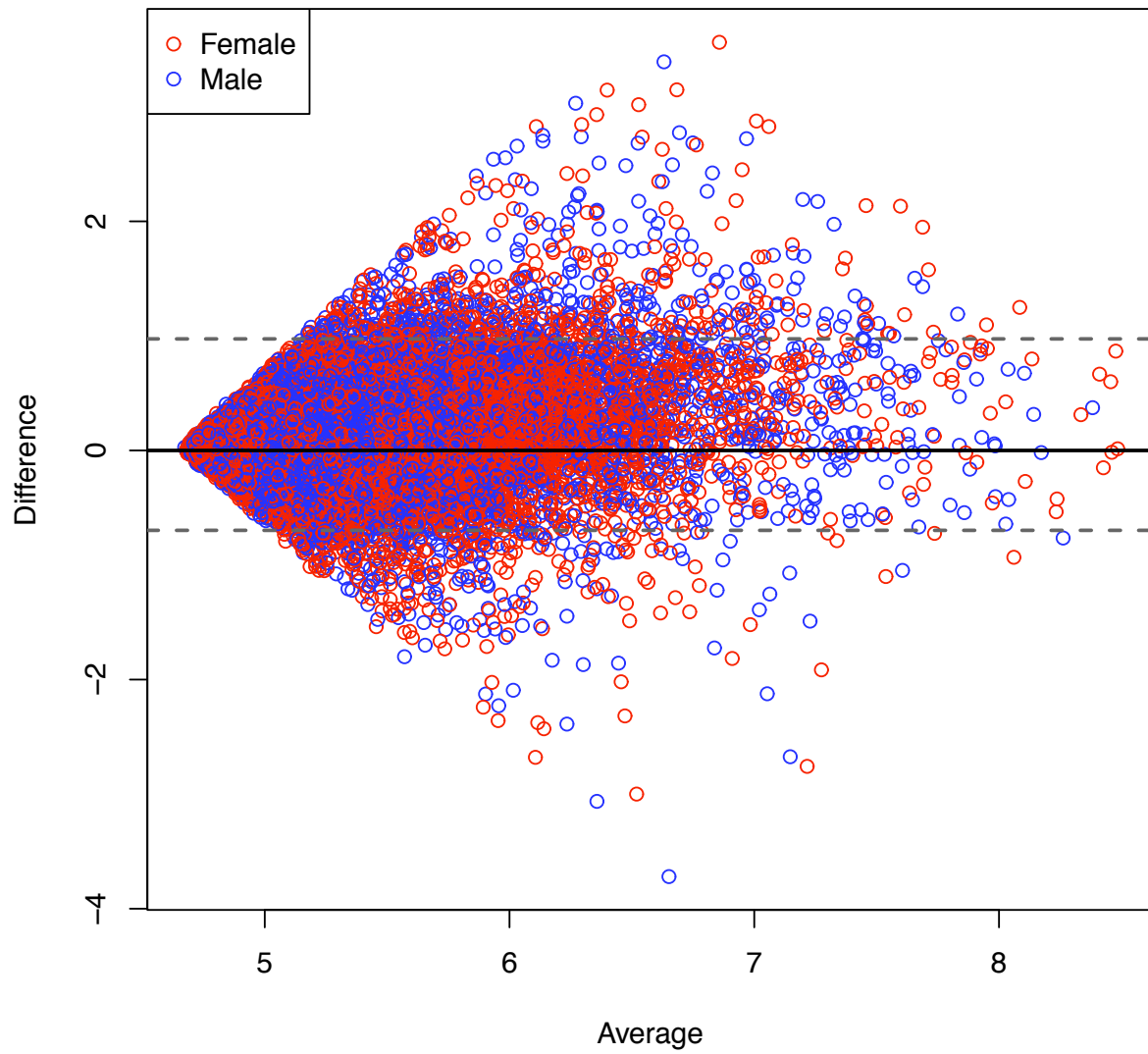
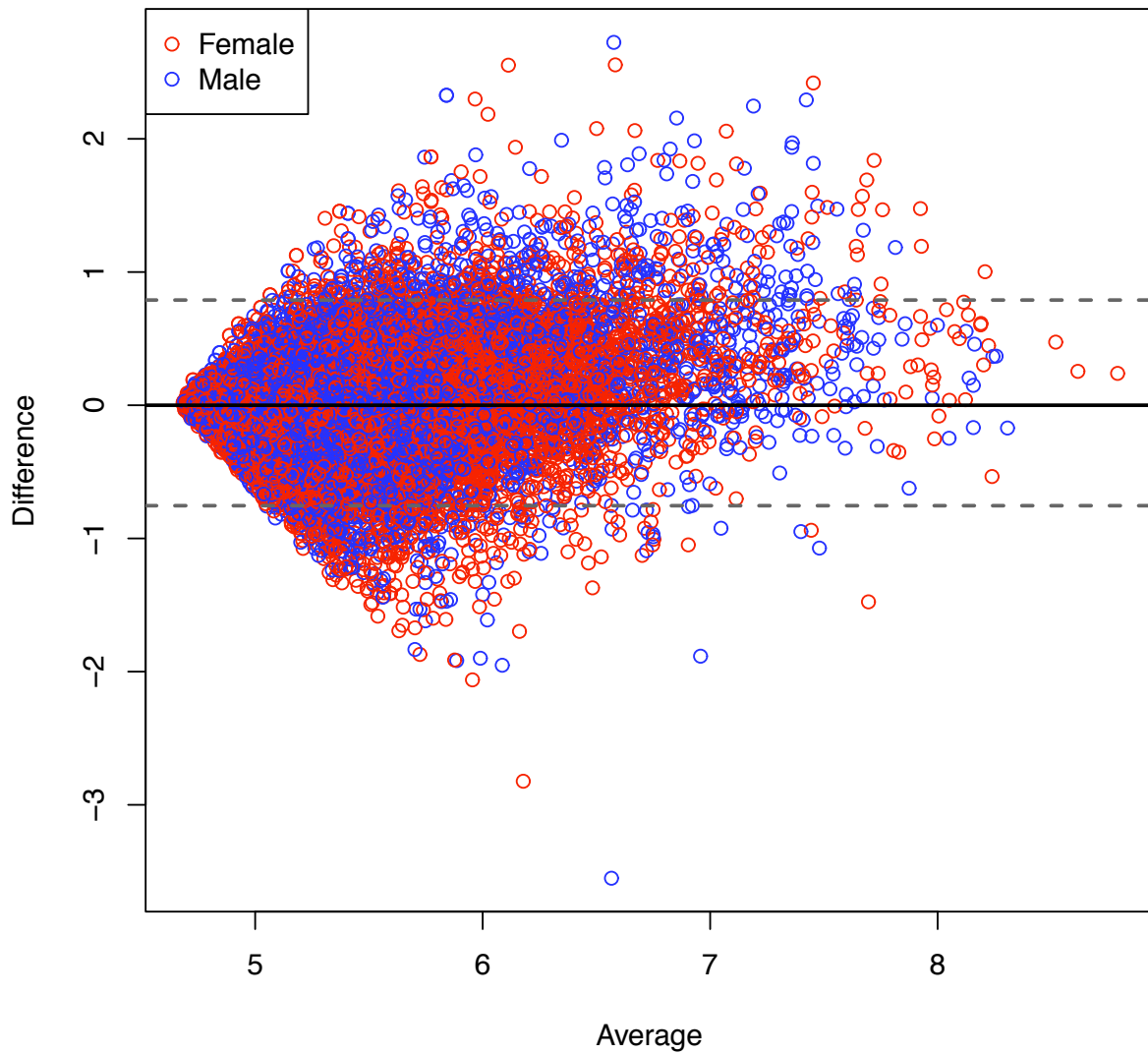


Bland-Altman Plot SNP module versus expression module



A

Bland-Altman Plot exon module versus expression module



B

Figure S2 Bland-Altman plots for gene means across modules in RNA arrays.

The mean expression for each gene were calculated for the exon, 3' expression and SNP modules. Bland-Altman plots were constructed by plotting the average expression on the Y axis and the difference in expression on the X axis. Female samples are shown in red. Male samples are shown in blue. A. The SNP module compared to the 3' expression module. B. The exon module compared to the 3' expression module.