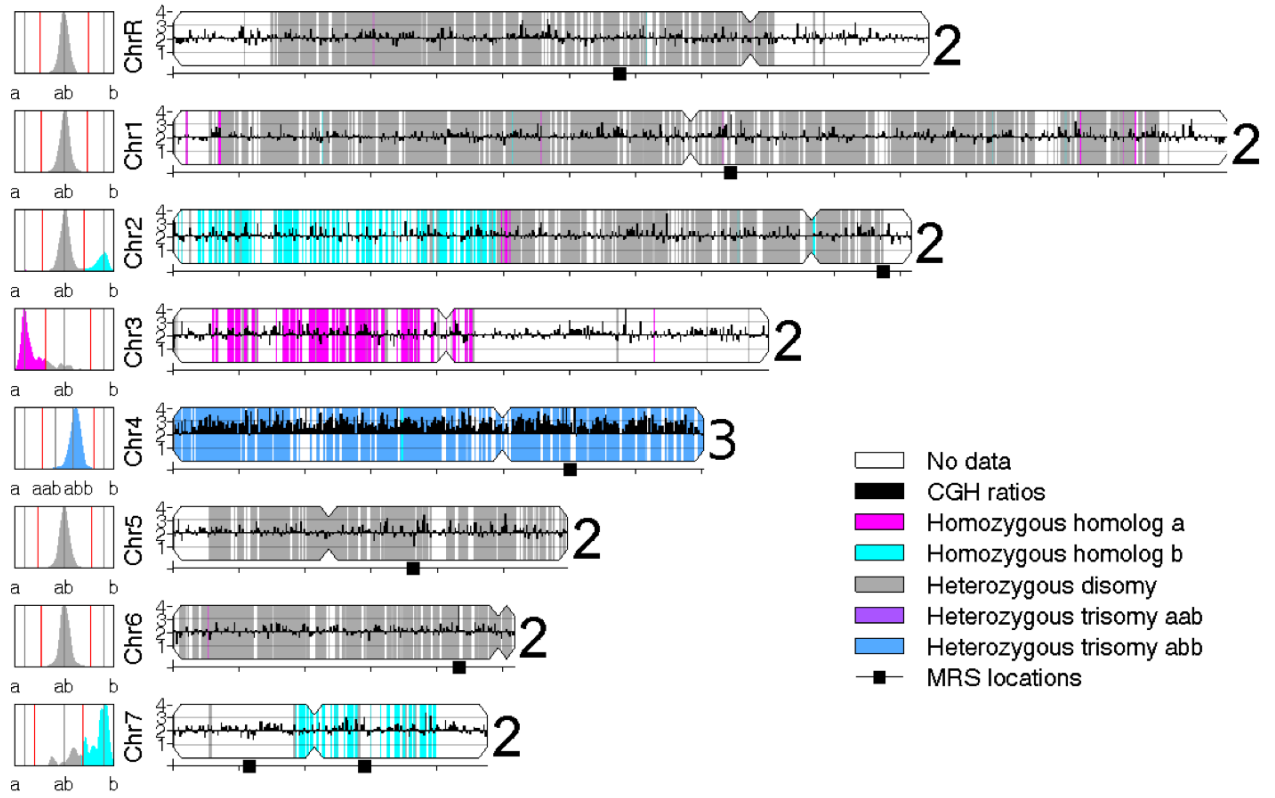


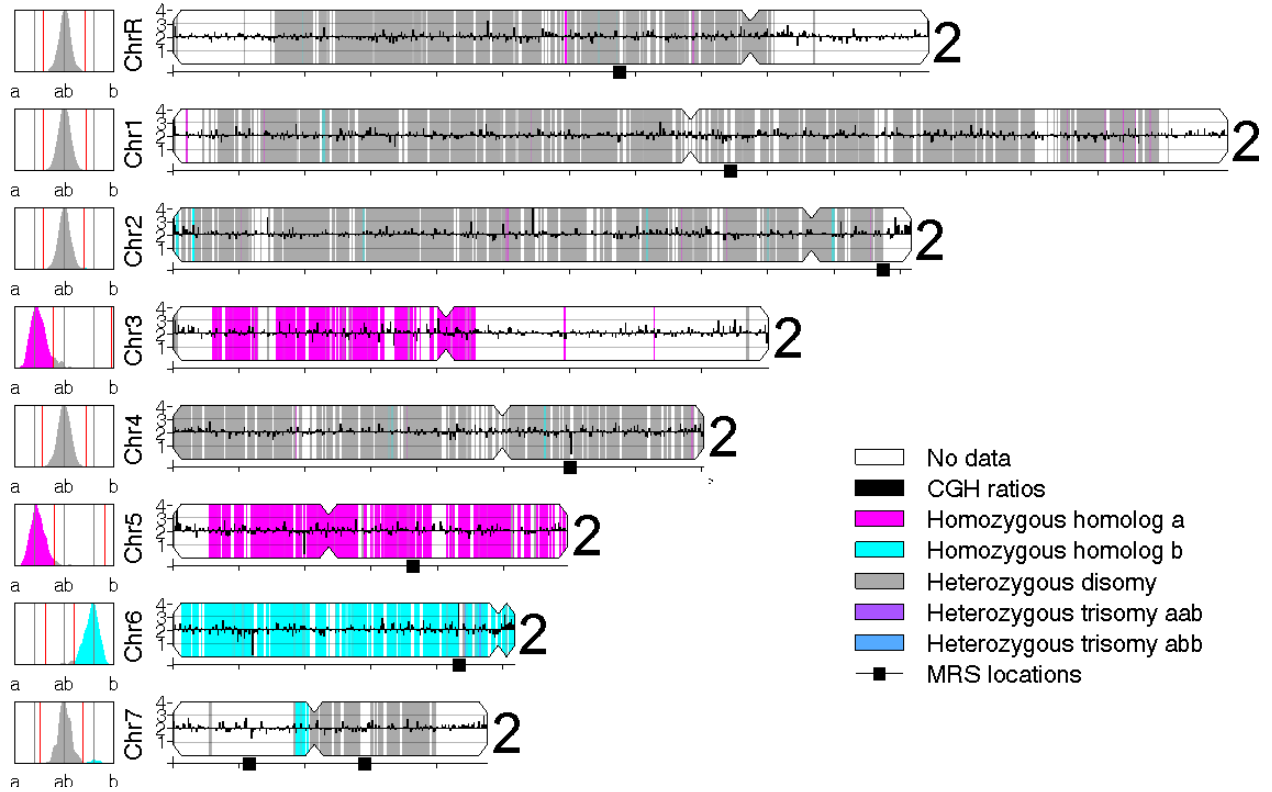
A

P1 (YJB9407)



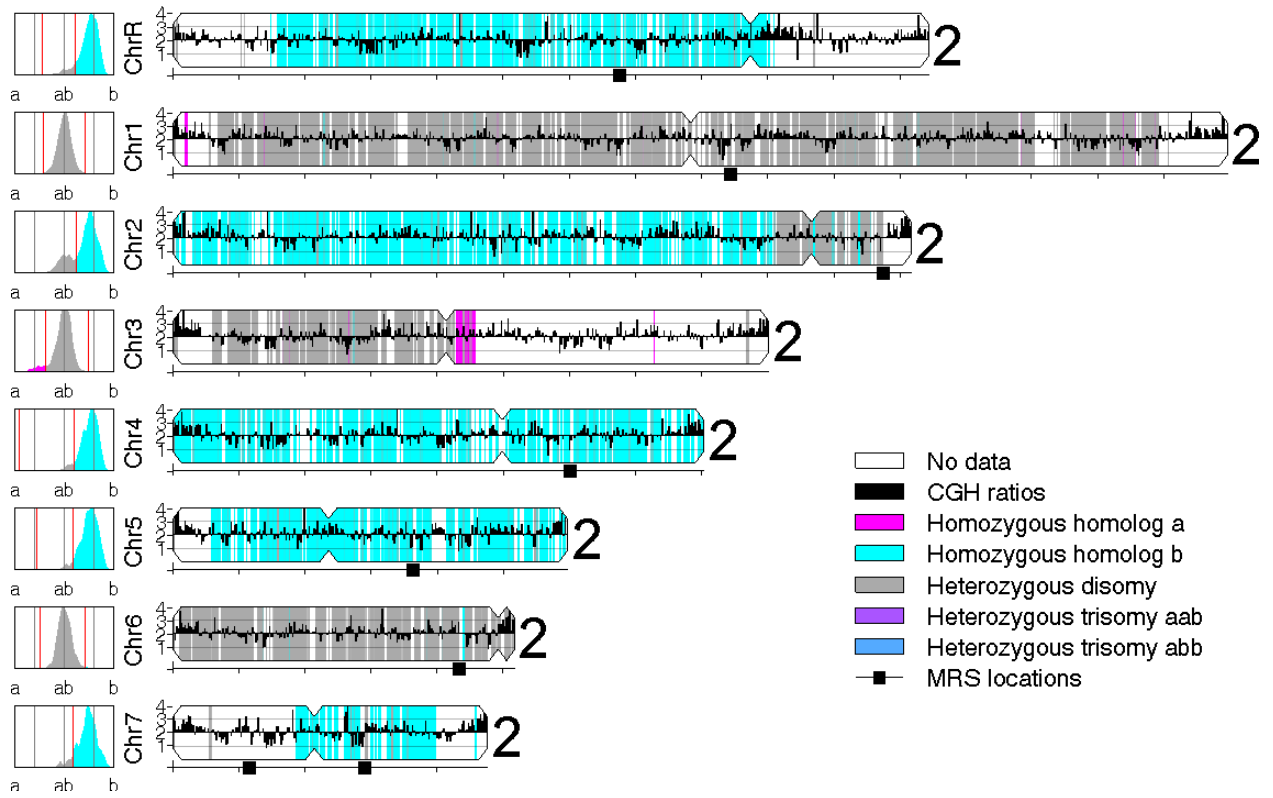
B

P2 (YJB9408)



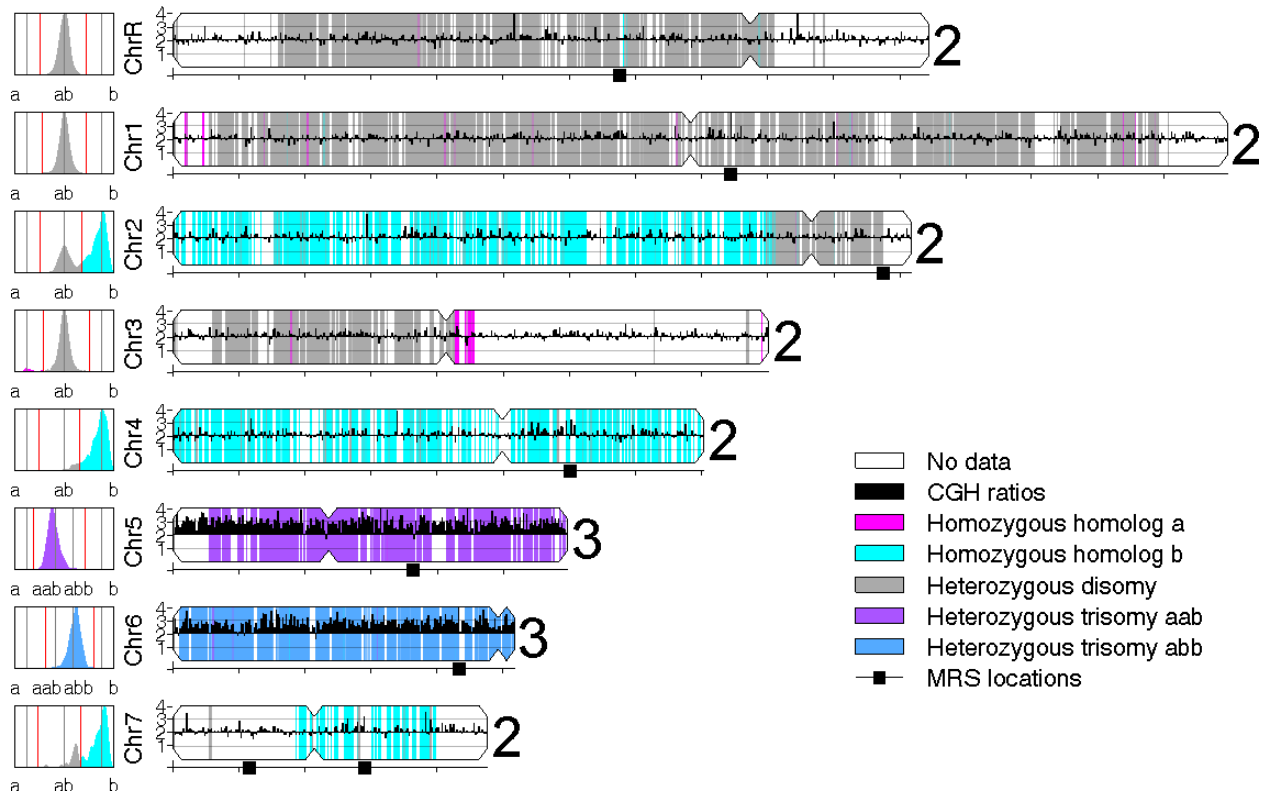
c

Ps7 (YJB10019)



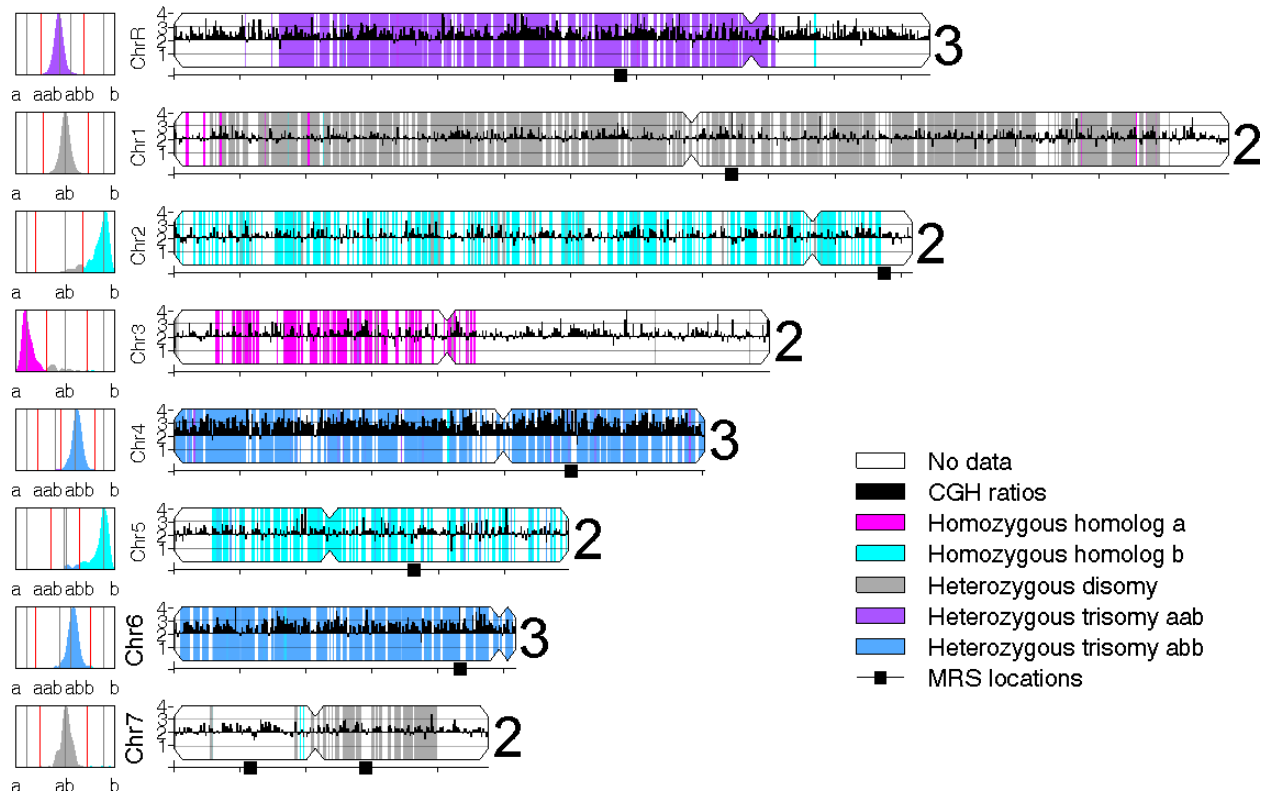
D

Ps8 (YJB10020)



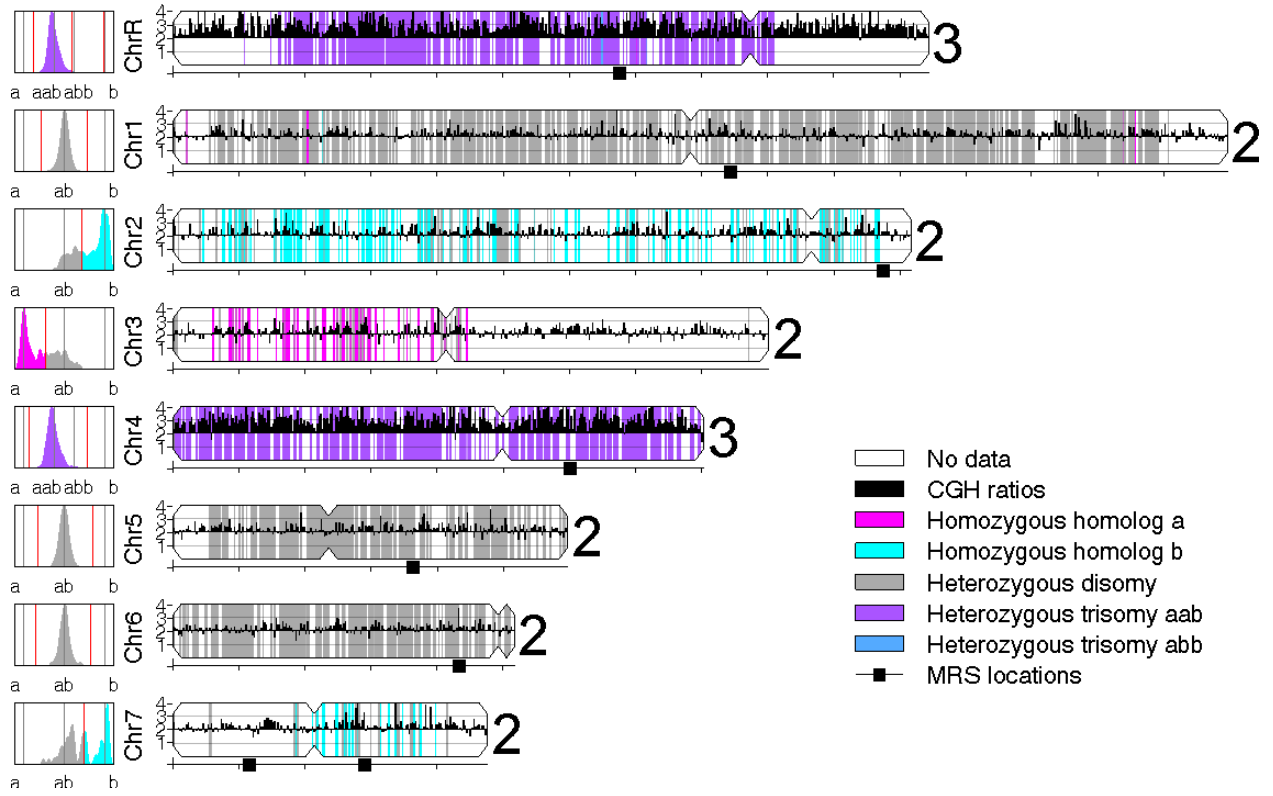
E

S3 (YJB9416)



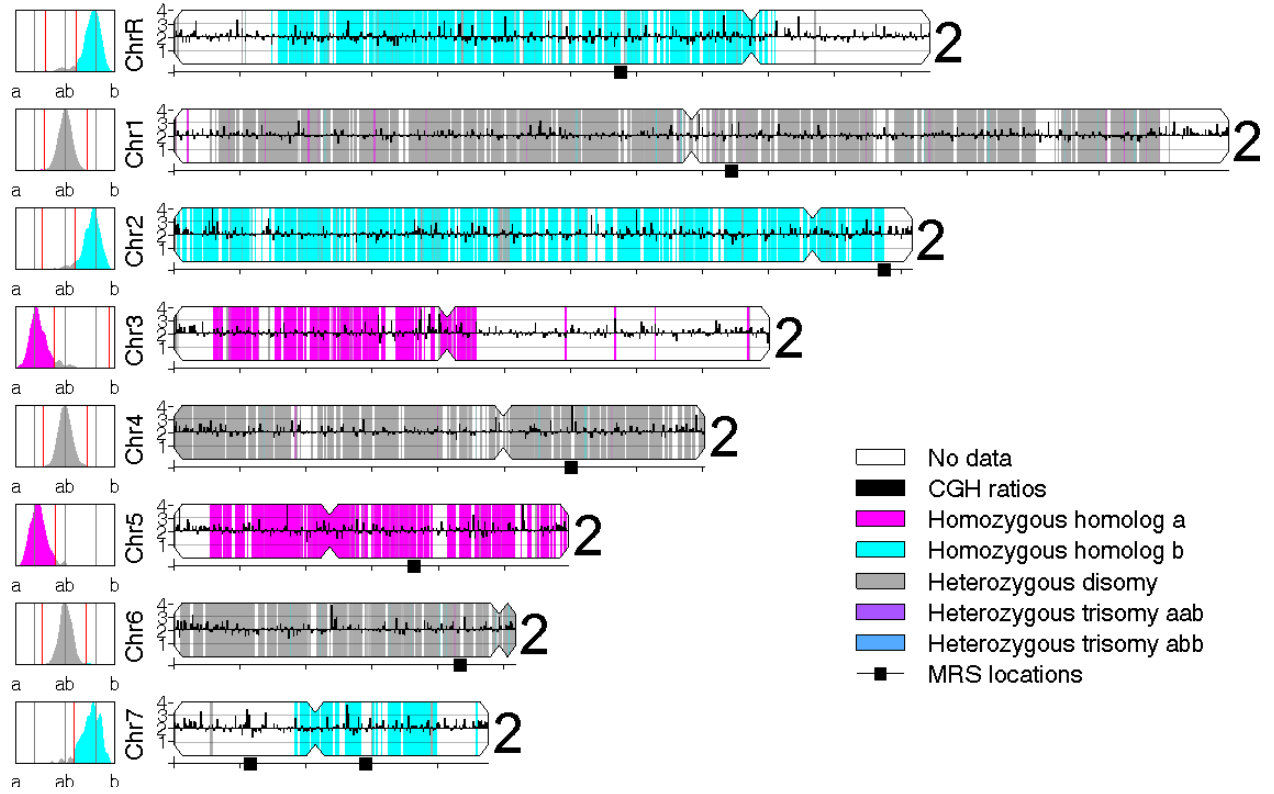
F

S4 (YJB9417)



G

Ss2 (YJB10022) [small colony]



H

Ss2 (YJB10022) [large colony]

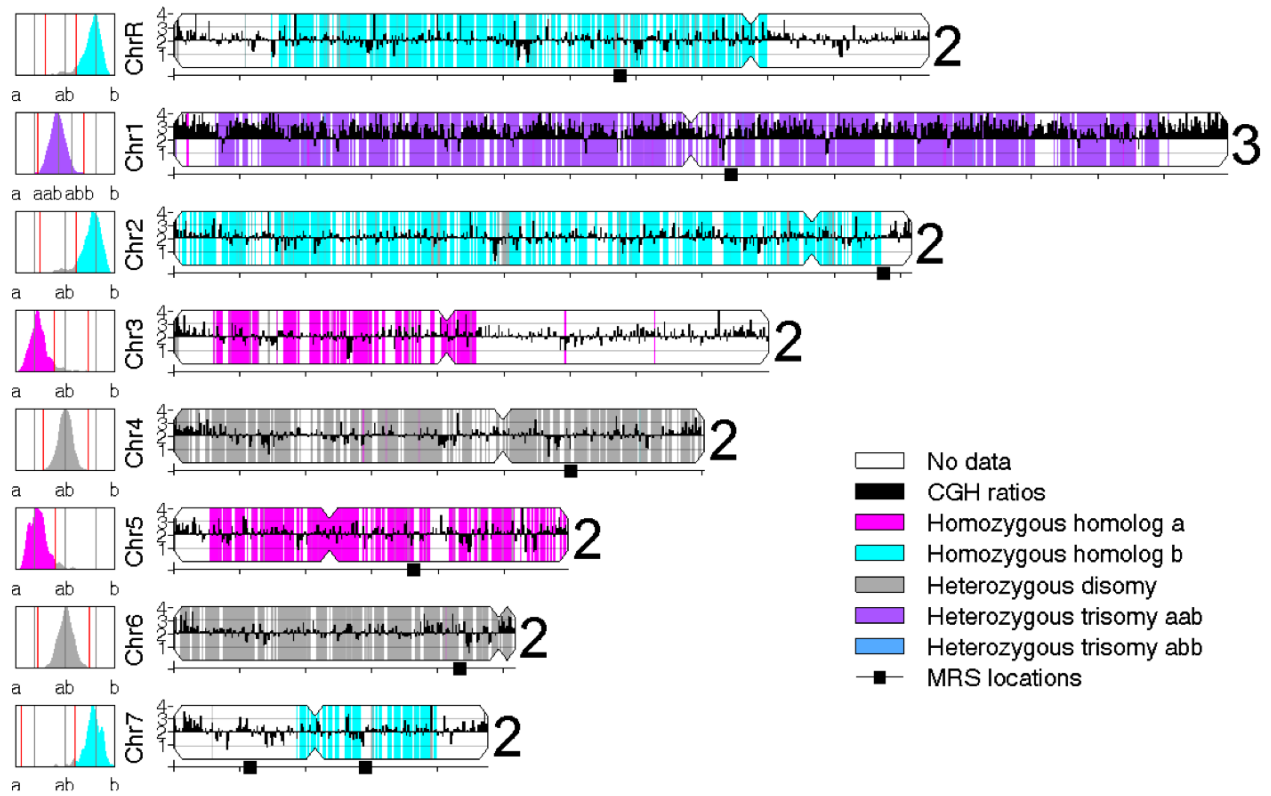


Figure S1 SNP/CGH of parasexual progeny strains used to construct the *C. albicans* SC5314 hapmap. Data for each strain was analyzed by SNP/CGH array and visualized as illustrated in Fig. 3. A) Strain P1 (YJB9407); B) P2 (YJB9408). C) Ps7 (YJB10019). D) Ps8 (YJB10020). E) S3 (YJB9416). F) S4 (YJB9417). G) Ss2 (YJB10022), small colony. H) Ss2 (YJB10022), large colony.