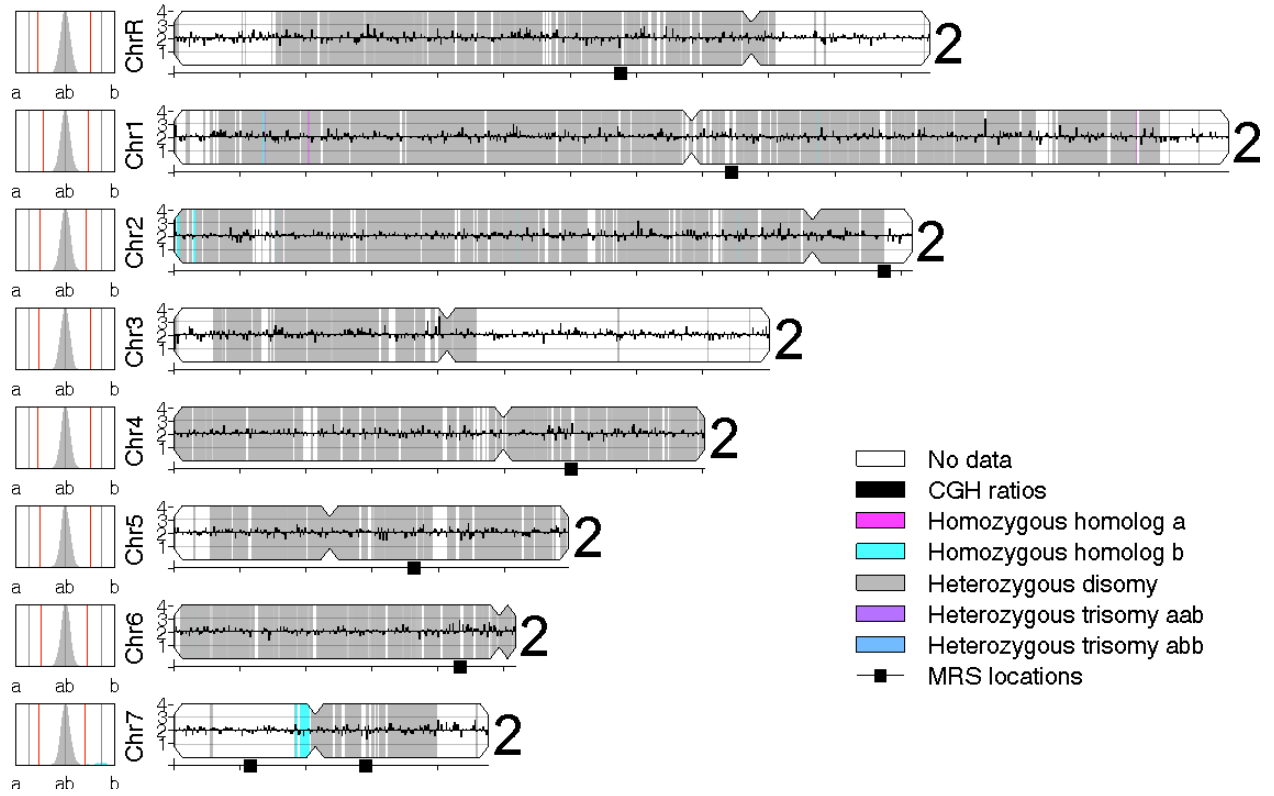


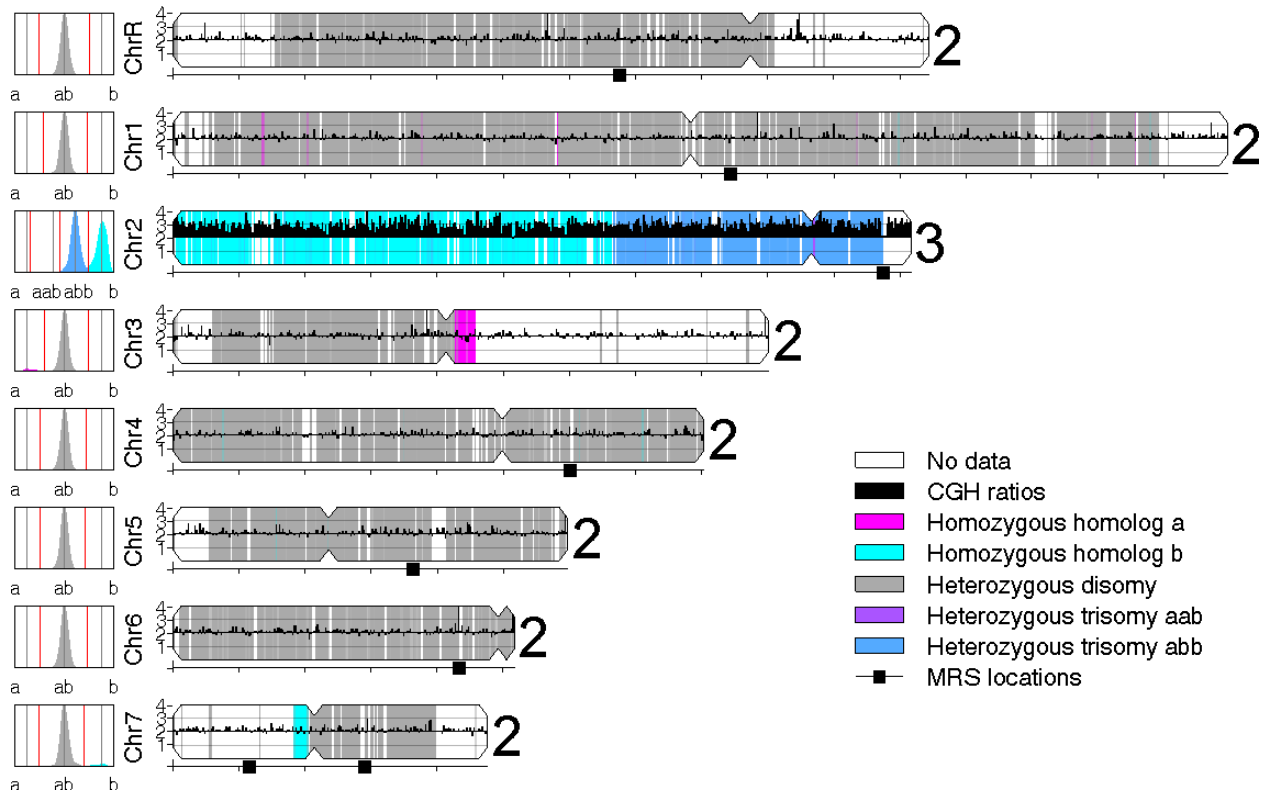
A

### CAF2 (YJB2101)



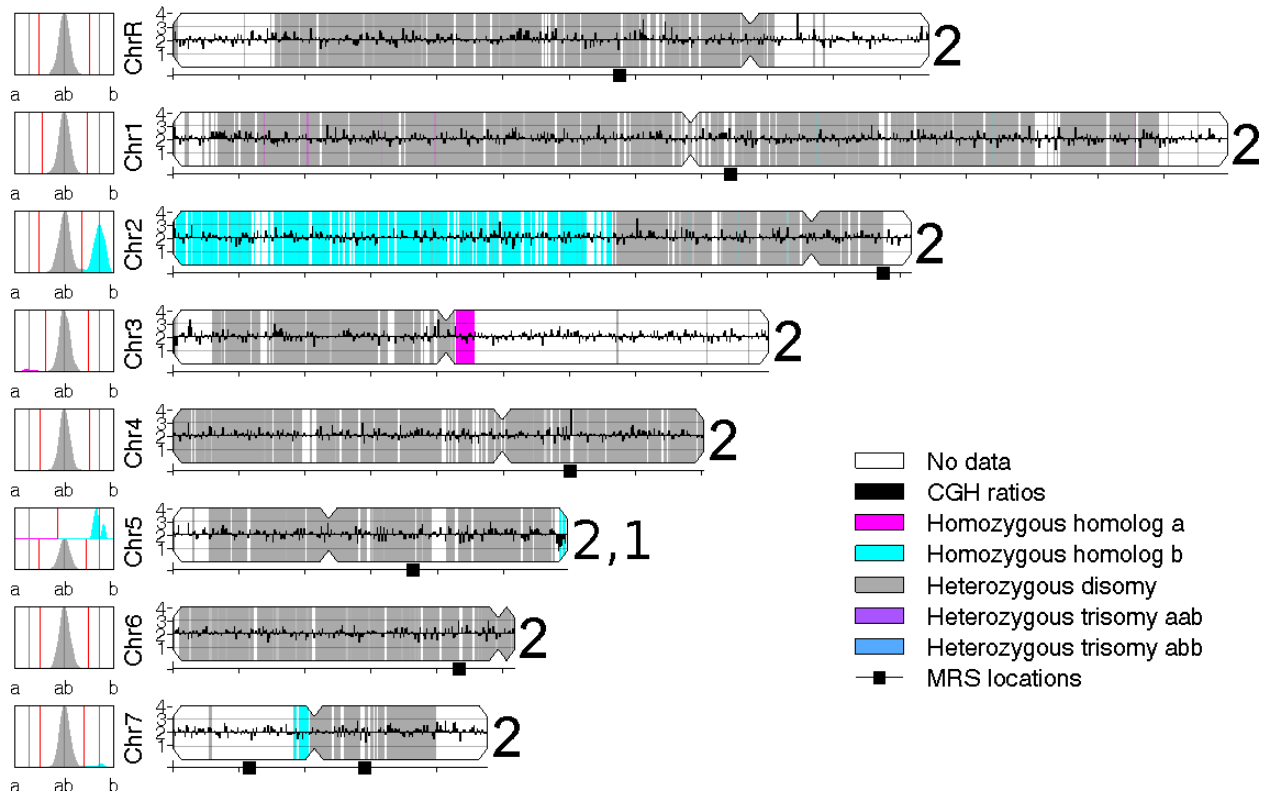
B

RM10 (YJB8648)



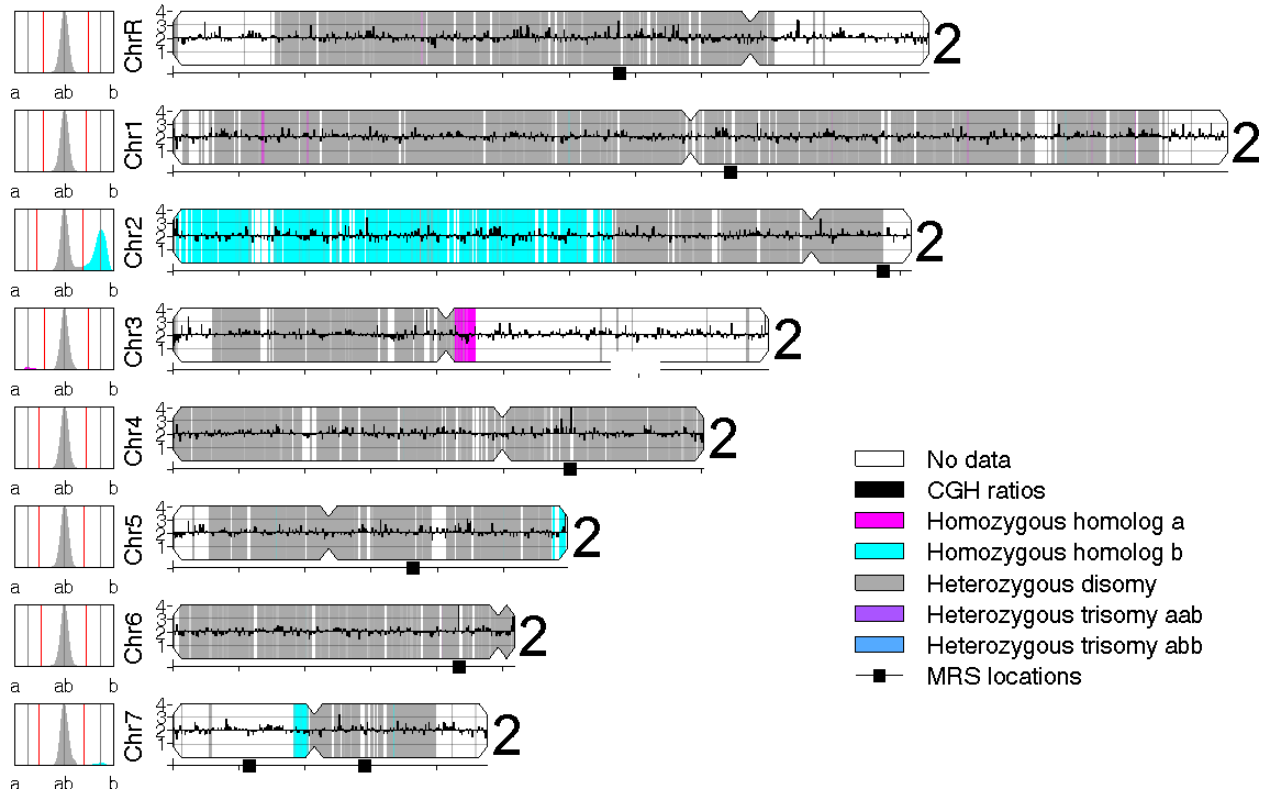
c

RM100 #13 (YJB8661)



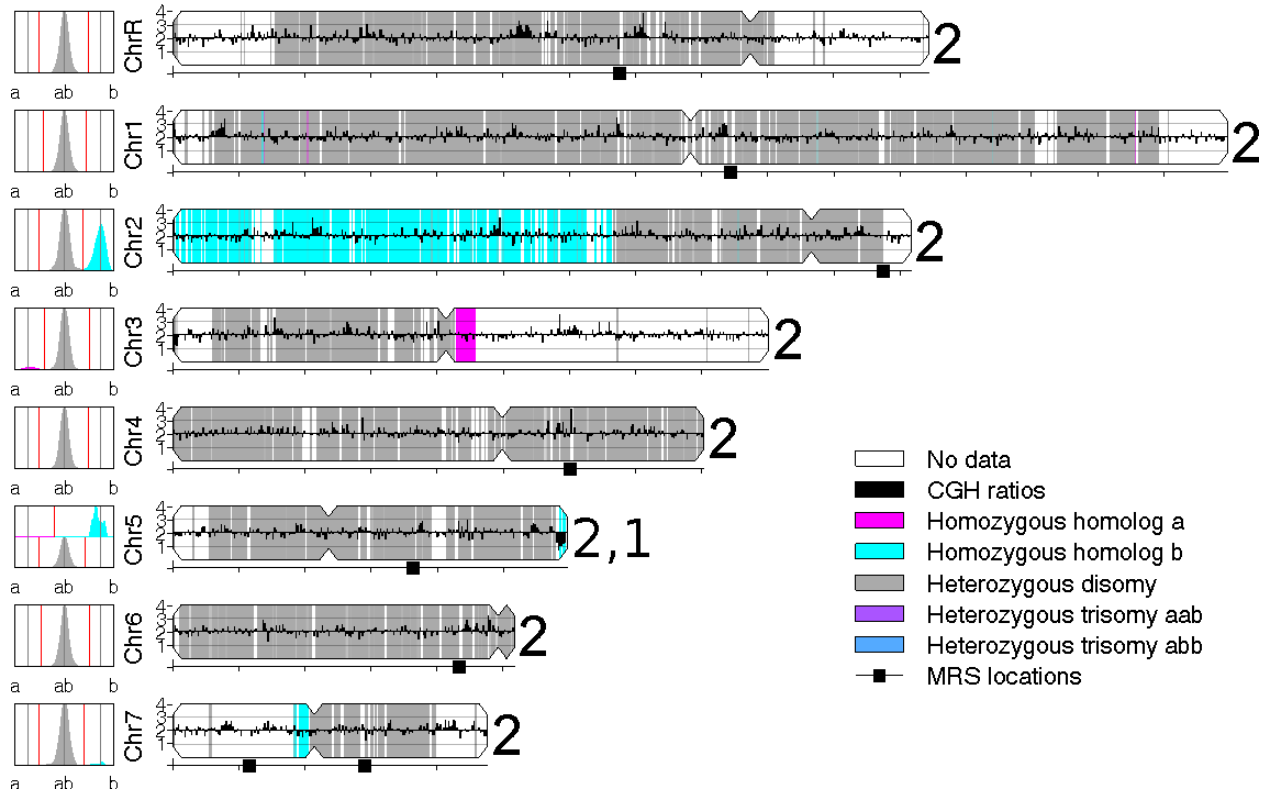
D

RM1000 #2 (YJB7617)



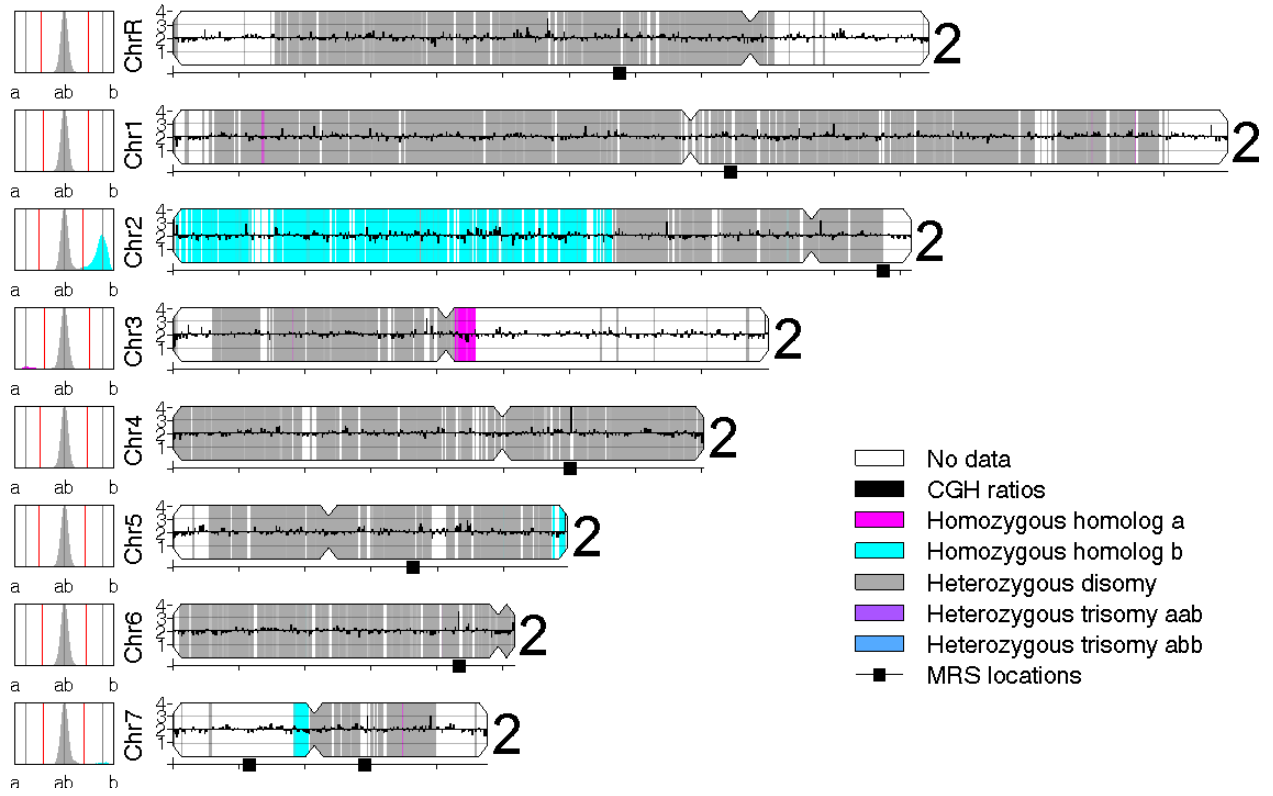
E

RM1000 #6 (YJB7616)



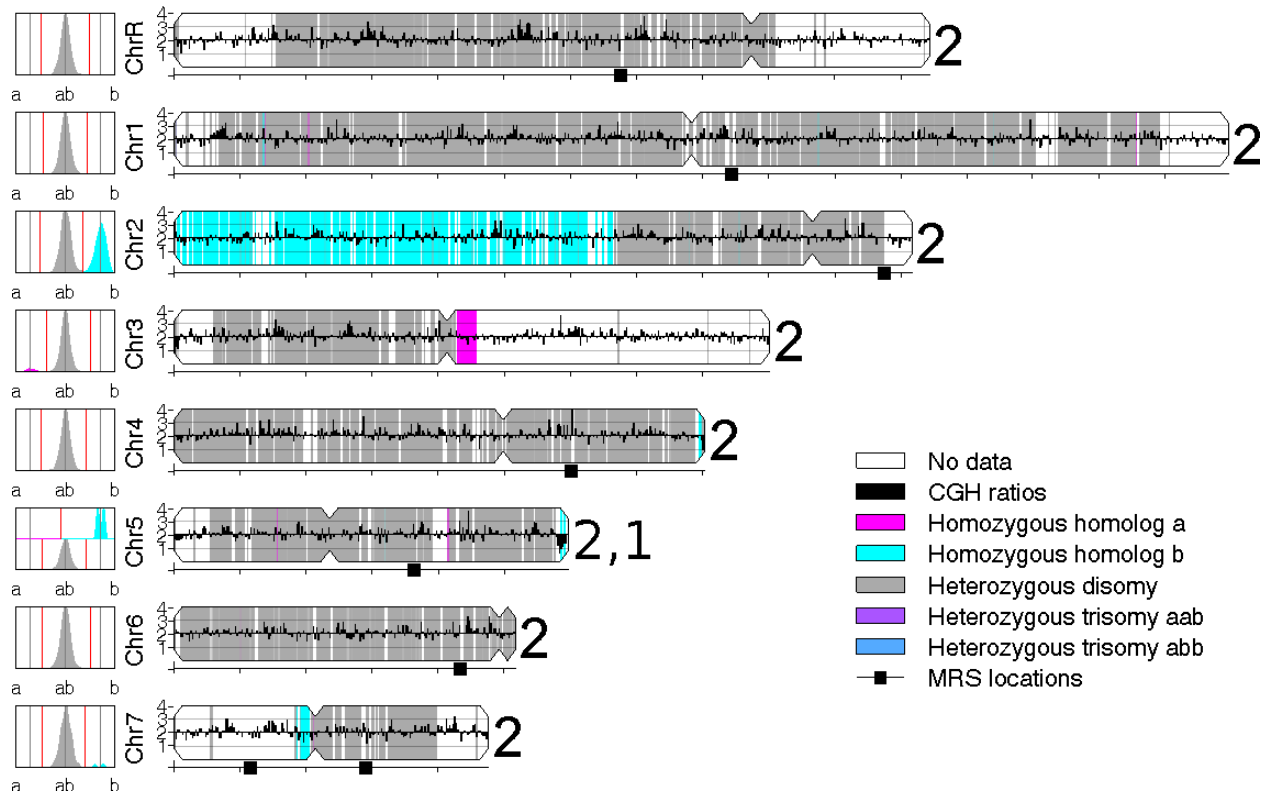
F

SN76 (YJB10038)



G

### BWP17 (YJB3731)



**Figure S2** SNP/CGH figures of related laboratory strains derived from SC5314. Data for each strain was analyzed by SNP/CGH array and visualized as illustrated in Fig. 3. A) CAF2 (YJB2101). B) RM10 (YJB8648). C) RM100 #13 (YJB8661). D) RM1000 #2 (YJB7617). E) RM1000 #6 (YJB7616). F) SN76 (YJB10038). G) BWP17 (YJB3731).