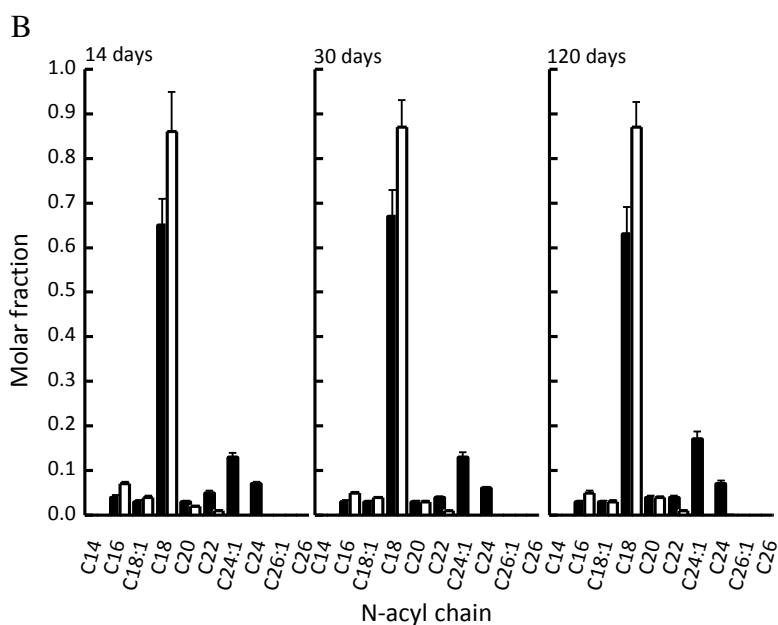
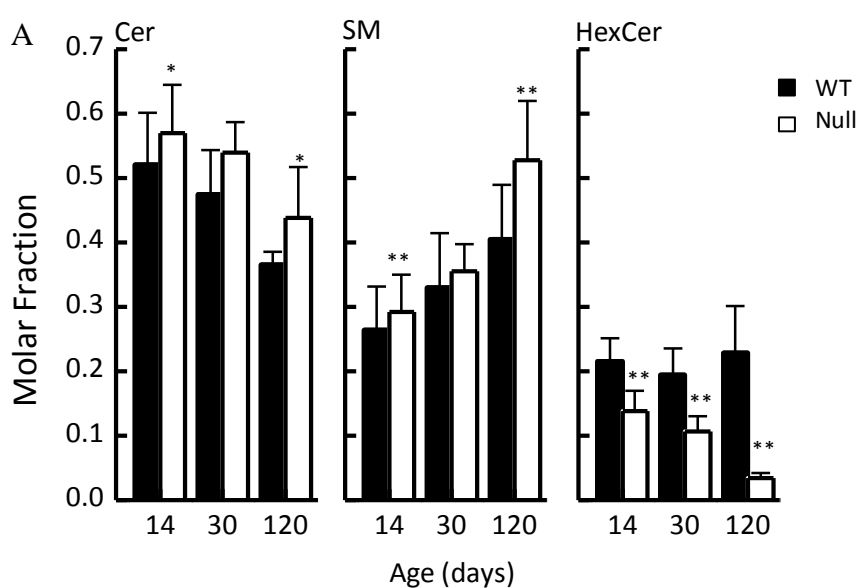
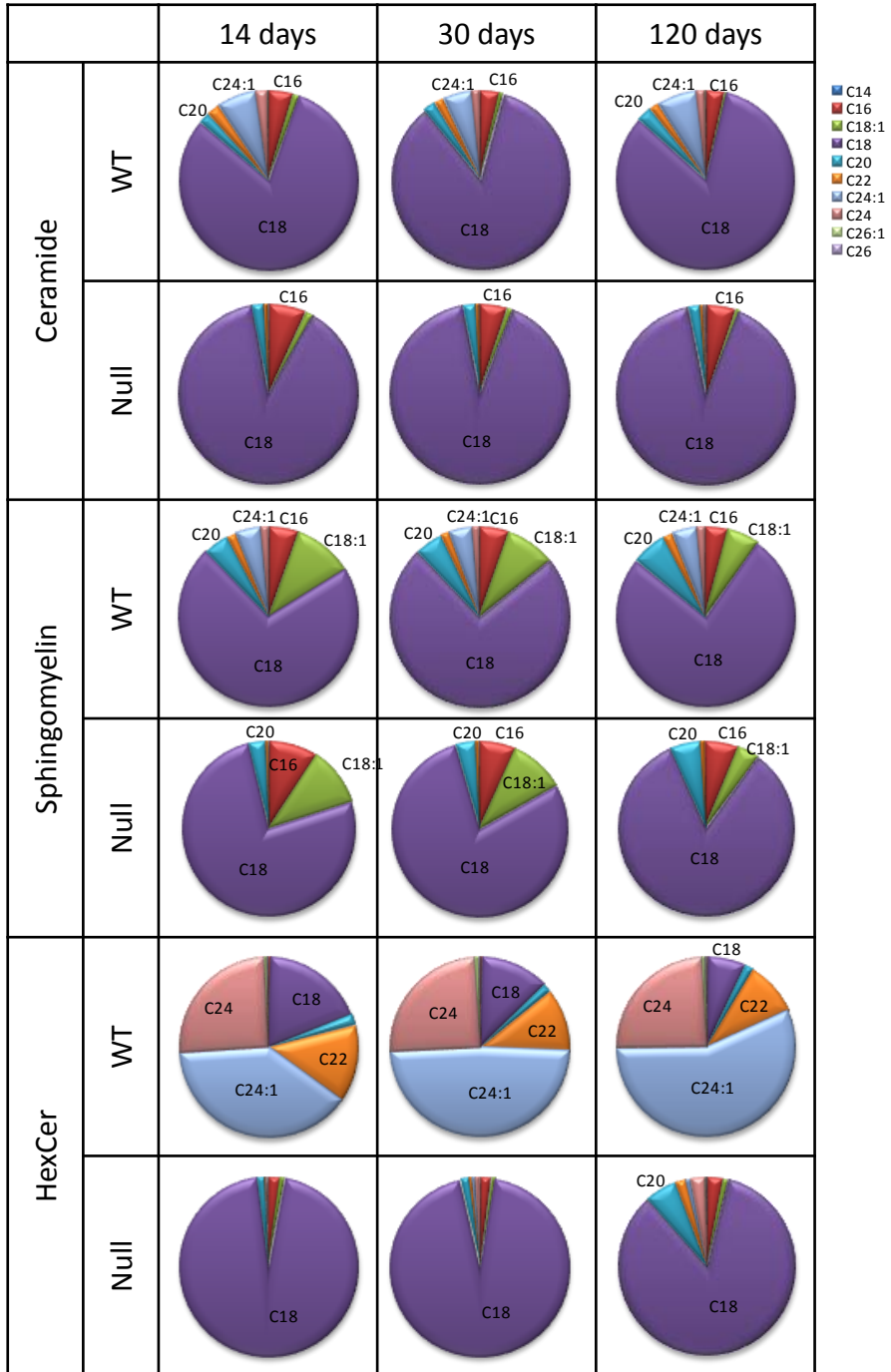


Supplemental data for: Silva et al “Ablation of Ceramide Synthase 2 Strongly Affects Biophysical Properties of Membranes”

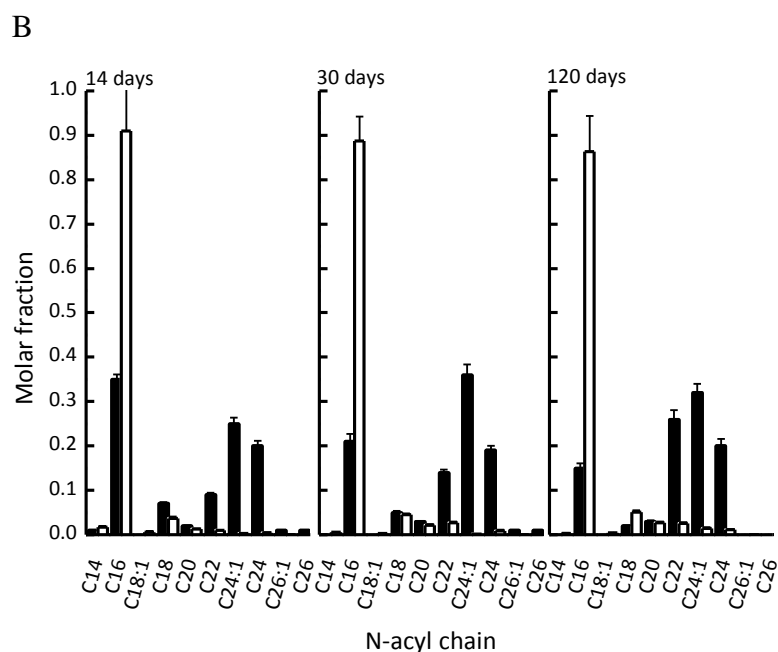
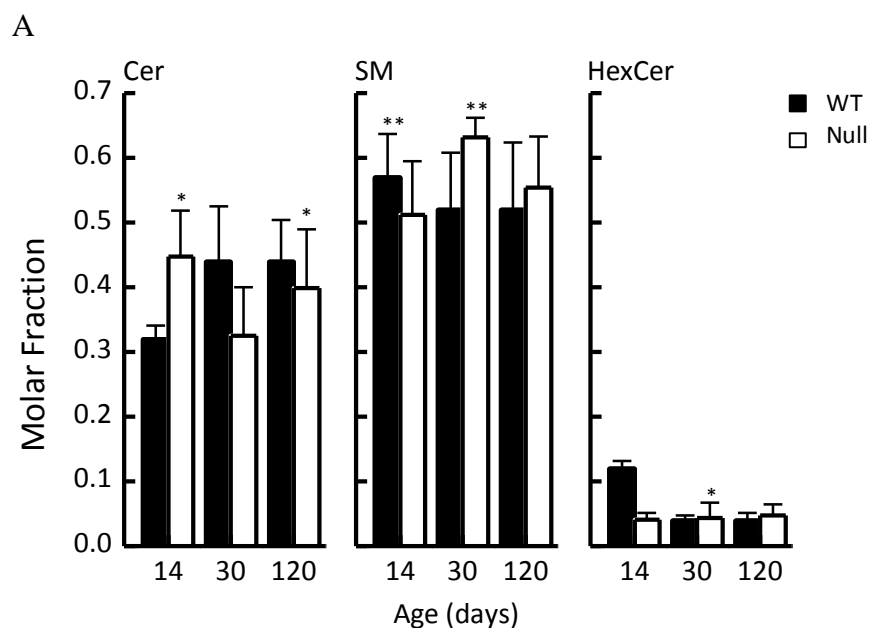
Supplemental Figure S1. LC-ESI MS/MS analysis of SL composition of microsomal brain lipids from WT and CerS2 null mice. (A) Molar fractions of Cer, SM and HexCer in WT and CerS2 null mice. *, $p < 0.05$; **, $p < 0.01$. (B) N-acyl chain distribution of total SLs. $p < 0.01$ for C18, C24 and C24:1 SL species, CerS2 null compared to WT. (C) N-acyl chain distribution of Cer, SM and HexCer. Values are means \pm SD ($n \geq 3$). Each sample was measured in duplicate.



C



Supplemental Figure S2. LC-ESI MS/MS analysis of SL composition of microsomal liver lipids from WT and CerS2 null mice. (A) Molar fraction of Cer, SM and HexCer in wt and CerS2 null mouse. (B) N-acyl chain distribution of total SLs. $p < 0.01$ for C16, C22, C24, C24:1, C26 and C26:1 SL species, CerS2 null compared to WT. (C) N-acyl chain distribution of Cer, SM and HexCer in WT and CerS2 null mice. Values are means \pm SD ($n \geq 3$). Each sample was measured in duplicate.



C

