

Fig. S1 LDI-MS spectrum of $[\text{Zn}^{\text{II}}\text{LH}_4\text{N}_3\text{S}]^+$ (theor. $m/z = 496.18$).

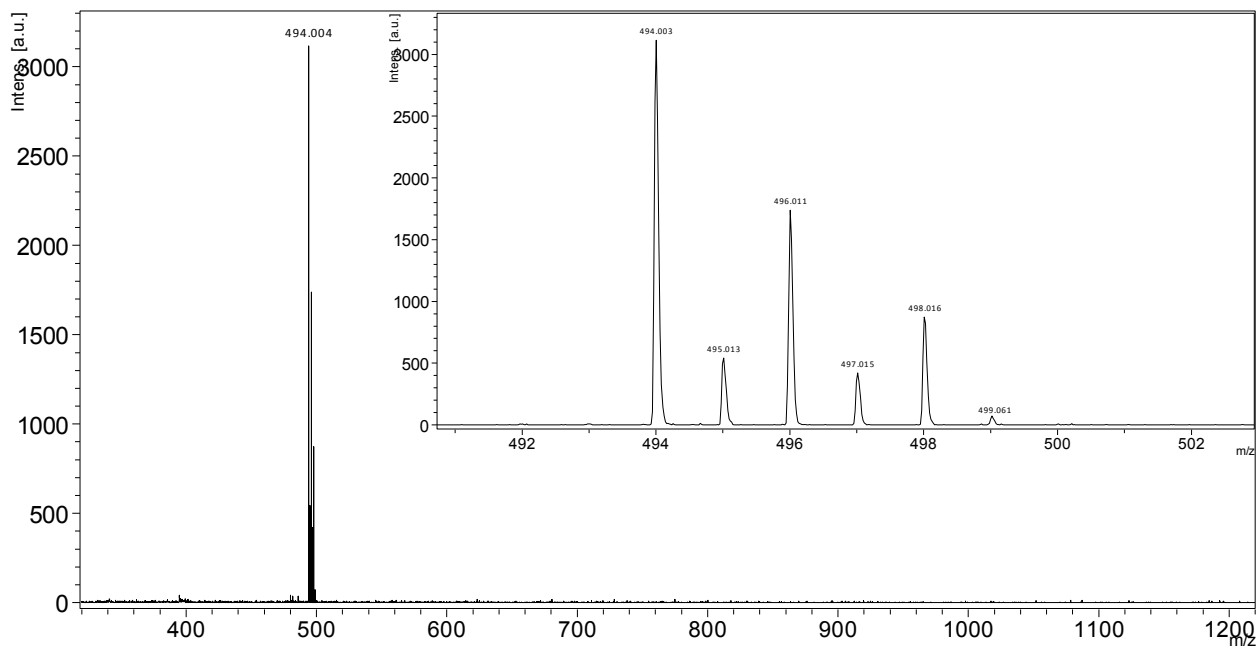


Fig. S2 LDI-MS spectrum of $[\text{Zn}^{\text{II}}(\text{LH}_2\text{N}_3\text{S})]^+$ (theor. $m/z = 494.16$).